

海豚管制區 Dolphin Exclusion Zone

三跑道系統項目實施海豚管制區，以預防及緩解填海相關工程所產生噪音對中華白海豚的影響。在預計會產生較高音量的施工活動範圍實施海豚管制區，例如支援拓地的深層水泥拌合法工序和建造海堤等工種，由已接受訓練的海豚觀察員進行監察。工程承建商亦須遵守機場管理局三跑道系統項目海豚管制區計劃的程序及指引。

The Three-runway System (3RS) project adopts Dolphin Exclusion Zone (DEZ) as a precautionary and mitigation measure for the noise impact on Chinese White Dolphin (CWD) from reclamation-related construction works. Works activities that are expected to be noisy, e.g. ground improvement works like Deep Cement Mixing and seawall construction, are required to implement DEZ with trained dolphin observers conducting the monitoring. Contractors are also required to follow the procedures and guidelines in the Airport Authority's 3RS project Dolphin Exclusion Zone Plan.



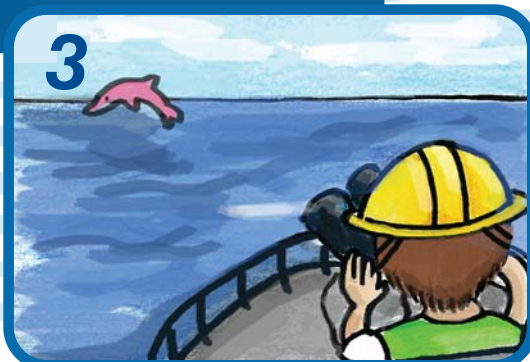
在須實施海豚管制區的施工活動開始前，海豚觀察員須先觀察海豚管制區30分鐘。當確定管制區內沒有海豚蹤影，方可開始工程。在實施海豚管制區期間進行工程時，觀察員會一直監察管制區。

Before commencing the works activity that requires DEZ, dolphin observer shall scan the DEZ for an initial period of 30 minutes. On the condition that the DEZ is clear of CWD during the period, works activity can commence. DEZ monitoring continues throughout all active construction activities requiring implementation of DEZ.



海豚觀察員繼續監察海豚的位置和動向。

Dolphin observer continues to monitor the location and movement of CWD.



於施工期間，如海豚觀察員在海豚管制區內發現中華白海豚，應即時通知工程負責人，並立刻停止在管制區內音量較高的工程活動。

If CWD is observed within the DEZ during the works activity, the dolphin observer shall immediately inform the construction superintendent to cease the noisy works activity within the DEZ right away.



在中華白海豚游離管制區後，海豚觀察員會繼續監察，直至30分鐘後在管制區內再無發現海豚蹤影，方可通知工程負責人，恢復管制區內被暫停的工程活動。

After the CWD has left the DEZ and the DEZ is continuously clear of dolphin for a period of 30 minutes, dolphin observer shall inform the construction superintendent that the suspended works activity within the DEZ can be resumed.

