

廢物管理措施

Waste Management Measures

三跑道系統項目施工期間，機管局採取多項廢物管理措施，盡量減少對環境的影響，包括減少建築廢物，及重用或回收建築物料如混凝土、挖出的泥土、玻璃和金屬等。

During the construction of the Three-Runway System (3RS) project, Airport Authority Hong Kong has adopted various waste management measures to minimise the environmental impacts, including keeping construction waste to a minimum, and maximising the reuse or recycling of construction materials such as concrete, excavated materials, glass and metals, etc.



混凝土和挖出的泥土已妥善分類和儲存，以便在三跑道系統項目的土地平整工程中重用

Concrete and excavated materials are properly segregated and stockpiled for reuse in land formation works of the 3RS project



妥善處理挖掘工程所產生的海泥，並於工地重用作回填物料

Excavated marine sediment is properly treated and reused as backfilling materials on site



盡量在建築工序中使用可重用的模板
Adoption of reusable formworks in the construction process when possible



將回收物料分類，推動廢物循環再造
Proper segregation of recyclable materials to promote recycling



將已分類的玻璃和金屬物料進行回收
Recycling of sorted glass and metals



不能重用的建築廢料於處置前暫存在地盤內的廢物收集斗，並加以覆蓋
Non-reusable construction waste is temporarily stored in waste skips and covered before disposal



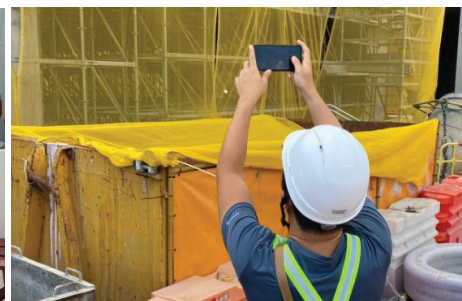
根據環境保護署發出的《包裝、標識及存放化學廢物的工作守則》妥善地儲存及處理化學廢物

Chemical wastes are properly stored and handled in accordance with the Code of Practice on the Packaging, Labelling and Storage of Chemical Wastes published by the Environmental Protection Department



向駐工地人員提供有關廢物管理及處理化學廢料程序的培訓

Trainings are provided to site staff on waste management and chemical waste handling procedures



環境小組每週進行巡查，並監察各項廢物管理措施

Weekly inspections are conducted by the Environmental Team to monitor various waste management measures