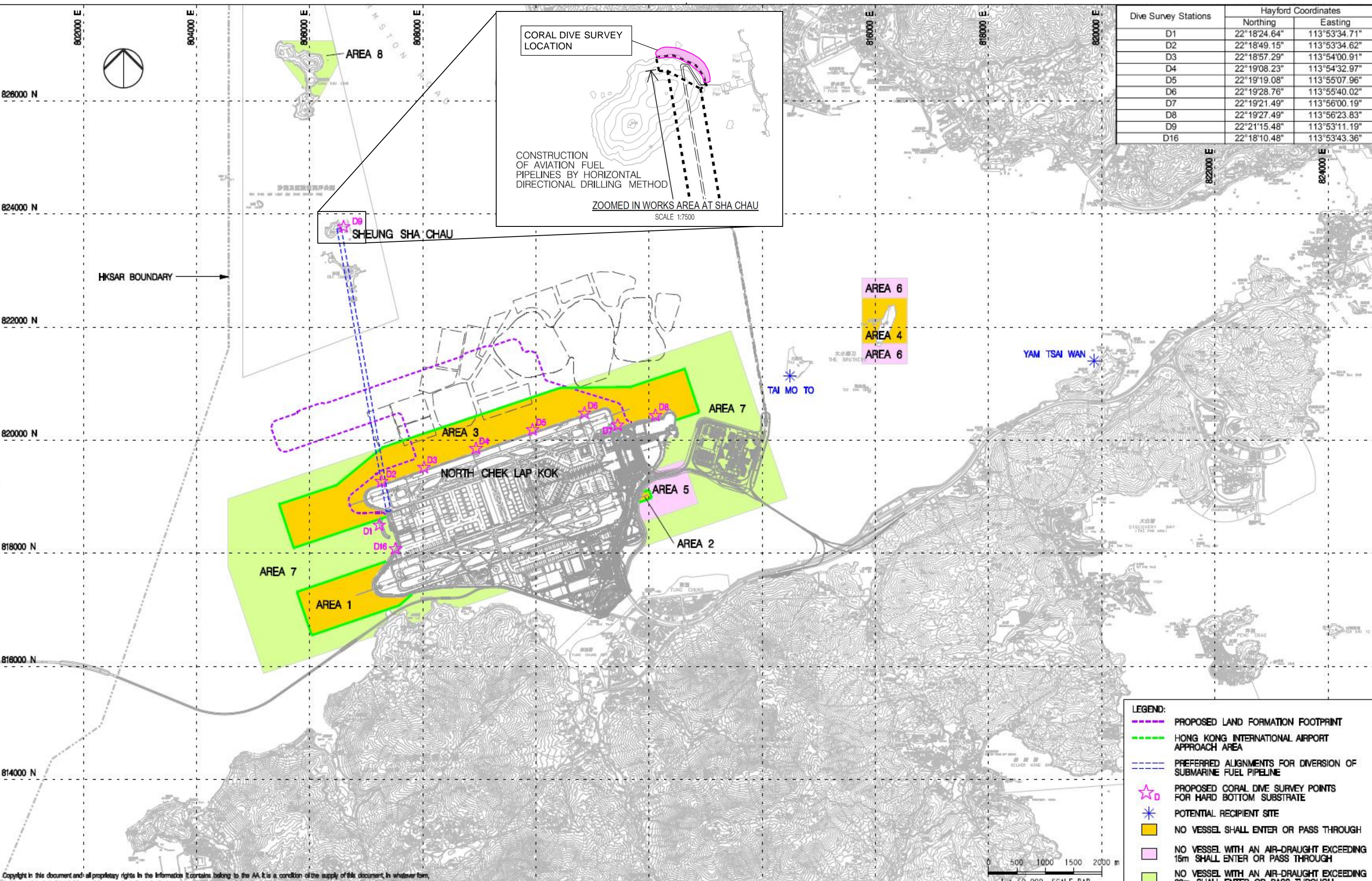
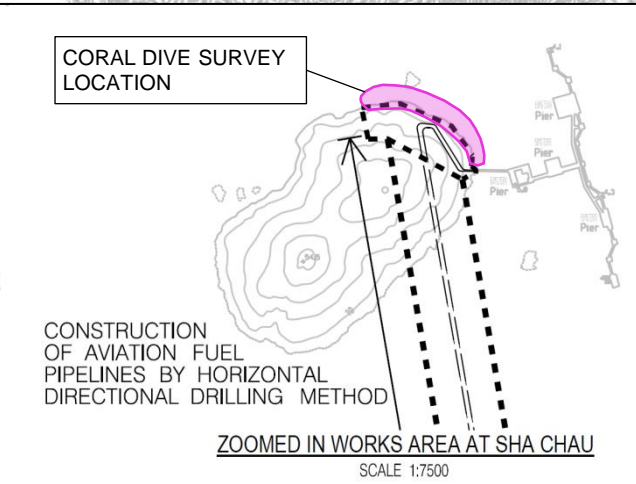


Dive Survey Stations	Hayford Coordinates	
	Northing	Easting
D1	22°18'24.64"	113°53'34.71"
D2	22°18'49.15"	113°53'34.62"
D3	22°18'57.29"	113°54'00.91"
D4	22°19'08.23"	113°54'32.97"
D5	22°19'19.08"	113°55'07.96"
D6	22°19'28.76"	113°55'40.02"
D7	22°19'21.49"	113°56'00.19"
D8	22°19'27.49"	113°56'23.83"
D9	22°21'15.48"	113°53'11.19"
D16	22°18'10.48"	113°53'43.36"



LEGEND:

- PROPOSED LAND FORMATION FOOTPRINT
- HONG KONG INTERNATIONAL AIRPORT APPROACH AREA
- PREFERRED ALIGNMENTS FOR DIVERSION OF SUBMARINE FUEL PIPELINE
- ☆ D PROPOSED CORAL DIVE SURVEY POINTS FOR HARD BOTTOM SUBSTRATE
- ☆ POTENTIAL RECIPIENT SITE
- NO VESSEL SHALL ENTER OR PASS THROUGH
- NO VESSEL WITH AN AIR-DRAUGHT EXCEEDING 15m SHALL ENTER OR PASS THROUGH
- NO VESSEL WITH AN AIR-DRAUGHT EXCEEDING 30m SHALL ENTER OR PASS THROUGH

Copyright in this document and all proprietary rights in the information it contains belong to the AA. It is a condition of the supply of this document, in whatever form, that the recipient shall hold it in confidence and shall not duplicate or otherwise reproduce it in whole or in part, nor disclose its contents without the written consent of the AA.

Rev.	Date	Description	Checked
A	18APR16	FIRST ISSUE	HY



INDICATIVE BASELINE
CORAL SURVEY LOCATIONS

Consultant's Signatures for Approval		Date
Design	JT	18APR16
Checkers	GC / TK	18APR16
Approver	EC	18APR16

EXPANSION OF HONG KONG INTERNATIONAL AIRPORT INTO A THREE-RUNWAY SYSTEM	
Drawing No.	Scale at A3 1 : 60000
FIGURE 2.1	Rev. A