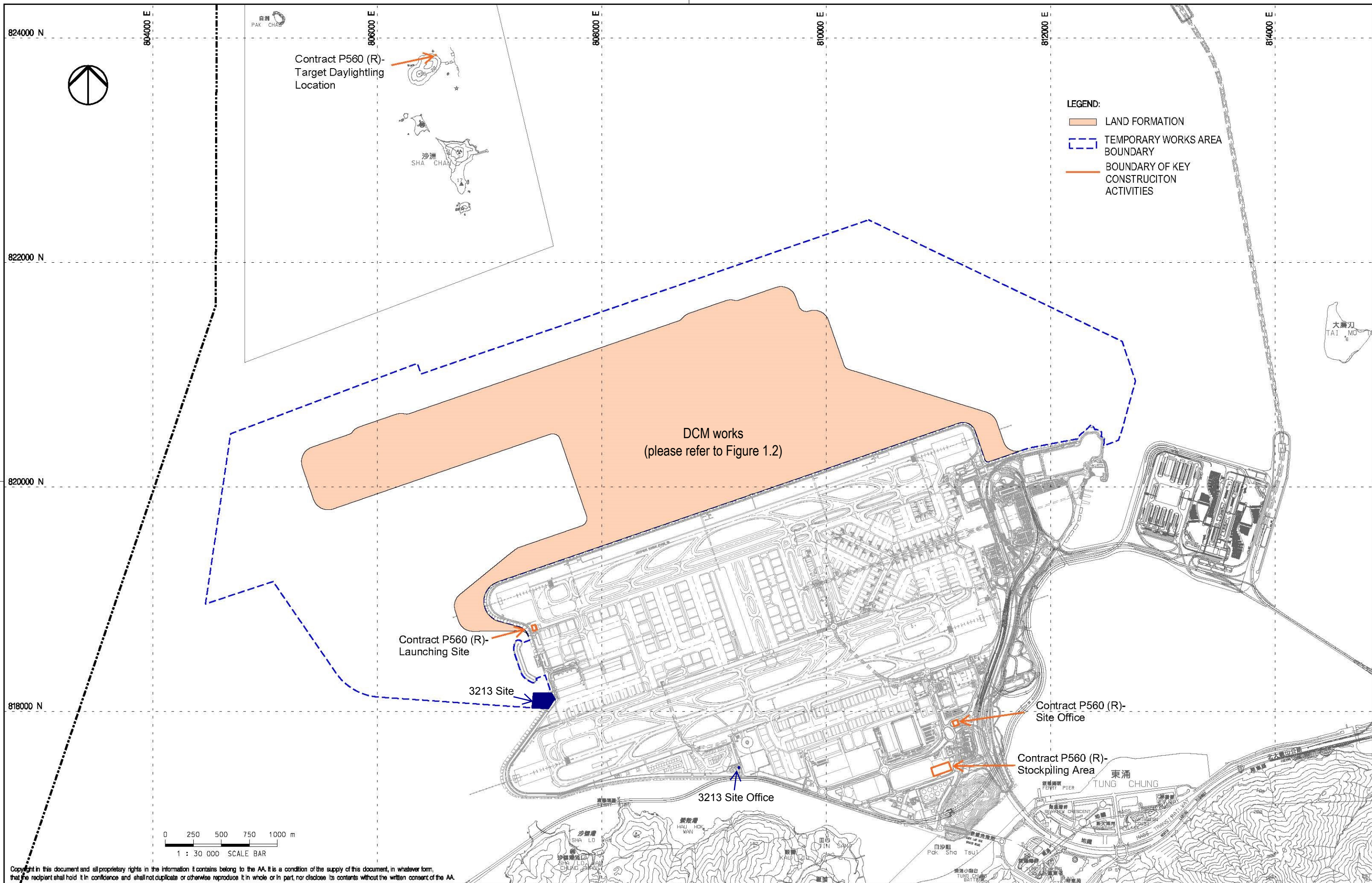


# Appendix A. Contract Description

## Contract Description

Contract No.	Contract Title	Contractor	Key Construction Activities
P560 (R)	Aviation Fuel Pipeline Diversion Works	Langfang Huayuan Mechanical and Electrical Engineering Co., Ltd.	Diversion of the existing submarine aviation fuel pipelines will use a horizontal directional drilling (HDD) method forming two rock drill holes by drilling through bedrock from a launching site located at the west of the airport island to a daylighting point adjacent to the offshore receiving platform at Sha Chau. Two new pipelines will be installed through the drilled tunnels. The total length is approximately 5 km. Drilling works will proceed from the HDD launching site at the airport island.
3201	Deep Cement Mixing (Package 1)	Penta-Ocean-China State-Dong-Ah Joint Venture	<p>The works covered by the Contract 3201, 3202, 3203 and 3204 comprise ground improvement of seabed using Deep Cement Mixing (DCM) method, the major construction activities including without limitation the following</p> <ul style="list-style-type: none"> <li>• Geophysical surveys;</li> <li>• Supply and placing of geotextile and sand blanket under seawalls;</li> <li>• Supply, maintenance, installation and removal of silt curtain systems;</li> <li>• Preliminary construction trails;</li> <li>• Supply and installation of DCM clusters within the works areas; and Coring, sampling and testing of DCM treated soils and reporting works.</li> </ul>
3202	Deep Cement Mixing (Package 2)	Samsung-BuildKing Joint Venture	
3203	Deep Cement Mixing (Package 3)	Sambo E&C Co.,Ltd	
3204	Deep Cement Mixing (Package 4)	CRBC-SAMBO Joint Venture	
3213	CLP Cable Diversion Enabling Works	Wing Hing Construction Company	<p>CLP cable diversion enabling works of Sha Chau South, Sheung Sha Chau and Lung Kwu Chau at Hong Kong International Airport Landside. The major construction activities including without limitation the following:</p> <ul style="list-style-type: none"> <li>• Geotechnical instrumentation and monitoring of the Works;</li> <li>• Temporary removal of armour rock and underlayers of existing seawall and subsequent reinstatement to its original condition;</li> <li>• Construction of the concrete cable trough embedded at about 3m below the surface of the existing seawall; and</li> <li>• Supply, installation, maintenance, and subsequent removal of temporary generator sets for temporary power supply with associated fuel supply and pump system located at Sheung Sha Chau, Sha Chau South and Lung Kwu Chau Islands.</li> </ul>



Rev.	Date	Description	Checked
A	31AUG15	FIRST ISSUE	DC



Title  
**LOCATIONS OF KEY CONSTRUCTION ACTIVITIES IN THIS REPORTING PERIOD**

Consultant's Signatures for Approval		Date
Design	DC	31AUG15
Checkers	DC	31AUG15
Design Supervisor	EC	31AUG15
Authorised Representative	JFP	31AUG15

EXPANSION OF HONG KONG INTERNATIONAL AIRPORT INTO A THREE-RUNWAY SYSTEM	
Drawing No.	<b>FIGURE 1.1</b>
Scale at A3	1 : 30000
Rev.	A



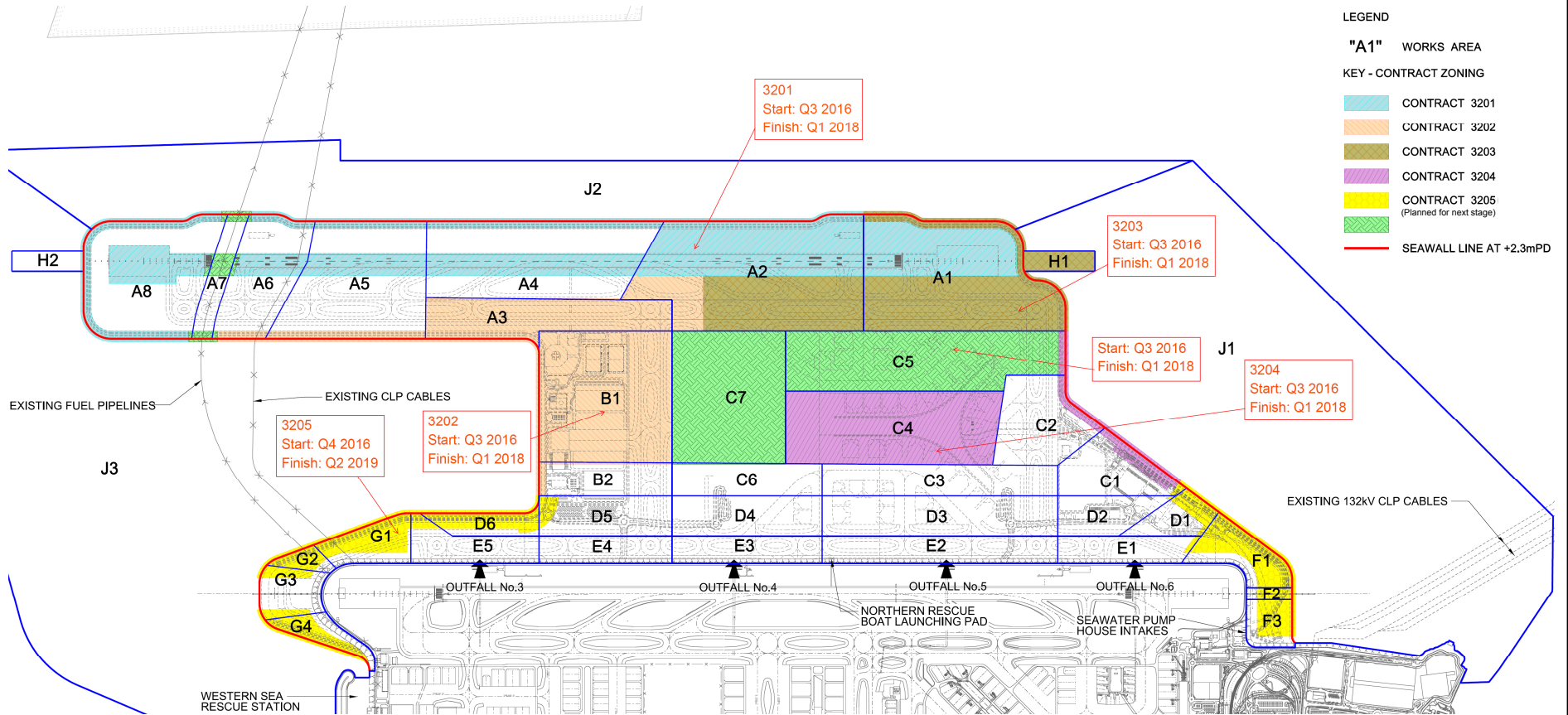


Figure 1.2 -Locations of Deep Cement Mixing Works Area