

Appendix C. Monitoring Results

Air Quality Monitoring Results

1-hour TSP Results

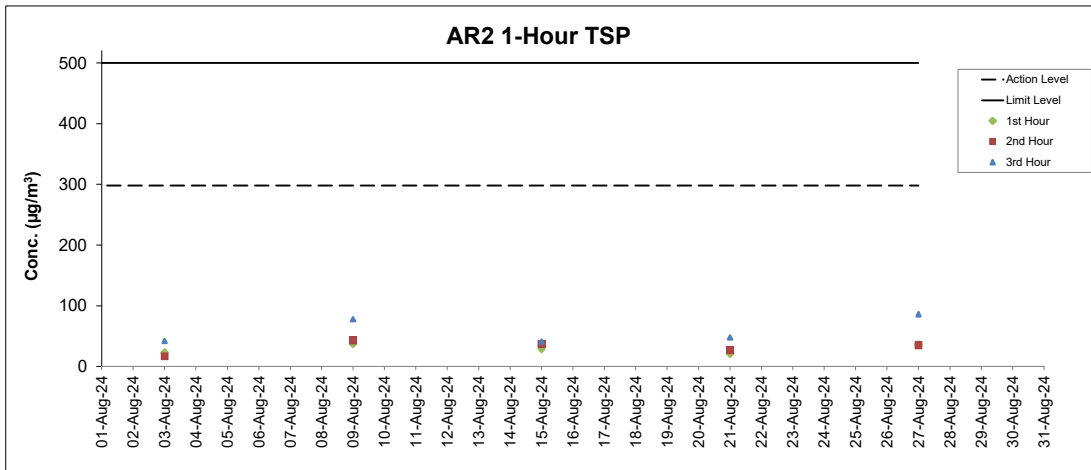
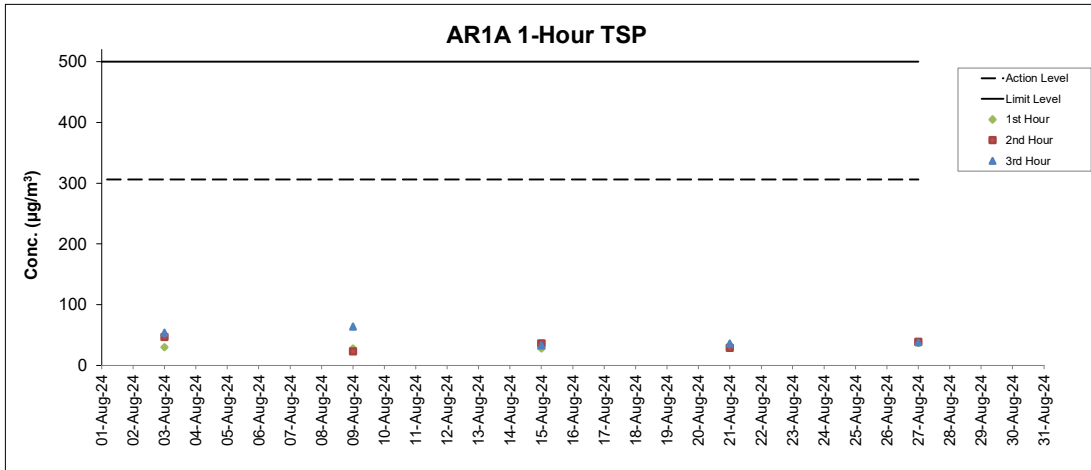
Station: AR1A- Man Tung Road Park

Date	Time	Weather	Wind Speed (m/s)	Wind Direction (deg)	1-hr TSP ($\mu\text{g}/\text{m}^3$)	Action Level ($\mu\text{g}/\text{m}^3$)	Limit Level ($\mu\text{g}/\text{m}^3$)
3-Aug-24	9:37	Sunny	3.1	227	30	306	500
3-Aug-24	10:37	Sunny	4.4	231	47	306	500
3-Aug-24	11:37	Sunny	4.4	236	54	306	500
9-Aug-24	9:42	Sunny	4.2	219	28	306	500
9-Aug-24	10:42	Sunny	5.0	213	23	306	500
9-Aug-24	11:42	Sunny	5.3	208	64	306	500
15-Aug-24	9:16	Cloudy	1.4	302	28	306	500
15-Aug-24	10:16	Cloudy	1.4	346	36	306	500
15-Aug-24	11:16	Cloudy	1.9	38	33	306	500
21-Aug-24	9:11	Cloudy	2.8	203	33	306	500
21-Aug-24	10:11	Cloudy	3.3	211	29	306	500
21-Aug-24	11:11	Cloudy	4.4	209	36	306	500
27-Aug-24	9:19	Sunny	3.1	226	37	306	500
27-Aug-24	10:19	Sunny	2.5	268	39	306	500
27-Aug-24	11:19	Sunny	2.5	257	38	306	500

1-hour TSP Results

Station: AR2- Village House, Tin Sum

Date	Time	Weather	Wind Speed (m/s)	Wind Direction (deg)	1-hr TSP ($\mu\text{g}/\text{m}^3$)	Action Level ($\mu\text{g}/\text{m}^3$)	Limit Level ($\mu\text{g}/\text{m}^3$)
3-Aug-24	13:53	Sunny	5.8	219	23	298	500
3-Aug-24	14:53	Sunny	6.4	222	17	298	500
3-Aug-24	15:53	Sunny	6.7	211	42	298	500
9-Aug-24	13:57	Sunny	7.8	220	37	298	500
9-Aug-24	14:57	Sunny	6.9	203	43	298	500
9-Aug-24	15:57	Sunny	6.4	217	78	298	500
15-Aug-24	13:12	Cloudy	4.7	161	29	298	500
15-Aug-24	14:12	Cloudy	6.1	203	37	298	500
15-Aug-24	15:12	Cloudy	5.8	220	41	298	500
21-Aug-24	13:23	Cloudy	5.0	213	21	298	500
21-Aug-24	14:23	Cloudy	4.4	201	27	298	500
21-Aug-24	15:23	Cloudy	4.2	192	48	298	500
27-Aug-24	13:17	Sunny	1.7	288	36	298	500
27-Aug-24	14:17	Sunny	3.3	215	35	298	500
27-Aug-24	15:17	Sunny	6.1	220	86	298	500



Notes

1. Major site activities carried out during the reporting period are summarized in Section 1.4 of the monthly EM&A report.
2. Weather conditions during monitoring are presented in the data tables above.
3. QA/QC requirements as stipulated in the EM&A Manual were carried out during measurement.

Noise Monitoring Results

Noise Measurement Results

Station: NM1A- Man Tung Road Park

Date	Weather	Time	Measured L ₁₀ dB(A)	Measured L ₅₀ dB(A)	L _{eq(30mins)} dB(A) ^
9-Aug-24	Sunny	9:29	63.1	59.5	65
9-Aug-24	Sunny	9:34	64.5	59.9	
9-Aug-24	Sunny	9:39	63.6	59.6	
9-Aug-24	Sunny	9:44	63.5	60.4	
9-Aug-24	Sunny	9:49	64.1	59.5	
9-Aug-24	Sunny	9:54	62.9	59.4	
15-Aug-24	Cloudy	8:12	58.8	55.5	61
15-Aug-24	Cloudy	8:17	60.4	55.5	
15-Aug-24	Cloudy	8:22	60.6	55.8	
15-Aug-24	Cloudy	8:27	59.4	56.2	
15-Aug-24	Cloudy	8:32	60.1	56.1	
15-Aug-24	Cloudy	8:37	60.5	56.5	
21-Aug-24	Cloudy	9:13	64.0	59.5	65
21-Aug-24	Cloudy	9:18	63.3	59.9	
21-Aug-24	Cloudy	9:23	63.5	59.1	
21-Aug-24	Cloudy	9:28	64.5	60.1	
21-Aug-24	Cloudy	9:33	63.5	60.1	
21-Aug-24	Cloudy	9:38	64.1	60.2	
27-Aug-24	Sunny	9:26	62.6	59.2	65
27-Aug-24	Sunny	9:31	62.9	59.1	
27-Aug-24	Sunny	9:36	63.0	59.4	
27-Aug-24	Sunny	9:41	63.1	60.3	
27-Aug-24	Sunny	9:46	62.7	59.1	
27-Aug-24	Sunny	9:51	64.0	59.2	

Remarks:

(^) +3dB (A) correction in Leq(30mins) dB(A) was applied to free-field measurement.

Noise Measurement Results

Station: NM4- Ching Chung Hau Po Woon Primary School

Date	Weather	Time	Measured L ₁₀ dB(A)	Measured L ₅₀ dB(A)	L _{eq(30mins)} dB(A) ^
2-Aug-24	Sunny	8:40	62.7	56.1	62
2-Aug-24	Sunny	8:45	62.8	56.2	
2-Aug-24	Sunny	8:50	61.6	56.4	
2-Aug-24	Sunny	8:55	60.7	55.3	
2-Aug-24	Sunny	9:00	59.7	55.2	
2-Aug-24	Sunny	9:05	61.1	55.6	
7-Aug-24	Sunny	10:56	63.9	50.4	63
7-Aug-24	Sunny	11:01	65.9	53.1	
7-Aug-24	Sunny	11:06	64.5	52.7	
7-Aug-24	Sunny	11:11	60.7	55.3	
7-Aug-24	Sunny	11:16	61.2	55.9	
7-Aug-24	Sunny	11:21	58.2	51.1	
16-Aug-24	Cloudy	11:05	63.6	56.8	62
16-Aug-24	Cloudy	11:10	62.1	57.0	
16-Aug-24	Cloudy	11:15	60.9	56.2	
16-Aug-24	Cloudy	11:20	59.9	56.5	
16-Aug-24	Cloudy	11:25	61.9	57.1	
16-Aug-24	Cloudy	11:30	60.1	55.8	
23-Aug-24	Sunny	11:08	65.1	57.2	64
23-Aug-24	Sunny	11:13	64.2	57.0	
23-Aug-24	Sunny	11:18	65.9	57.4	
23-Aug-24	Sunny	11:23	62.1	57.5	
23-Aug-24	Sunny	11:28	63.6	56.7	
23-Aug-24	Sunny	11:33	60.6	57.2	
30-Aug-24	Sunny	13:29	62.8	56.8	62
30-Aug-24	Sunny	13:34	62.1	57.5	
30-Aug-24	Sunny	13:39	59.9	56.8	
30-Aug-24	Sunny	13:44	60.4	56.9	
30-Aug-24	Sunny	13:49	60.7	57.3	
30-Aug-24	Sunny	13:54	60.6	57.5	

Remarks:

(^) +3dB (A) correction in Leq(30mins) dB(A) was applied to free-field measurement.

Noise Measurement Results

Station: NM5- Village House, Tin Sum

Date	Weather	Time	Measured L ₁₀ dB(A)	Measured L ₅₀ dB(A)	L _{eq(30mins)} dB(A) ^
9-Aug-24	Sunny	12:08	54.9	51.2	56
9-Aug-24	Sunny	12:13	54.7	51.0	
9-Aug-24	Sunny	12:18	55.1	50.6	
9-Aug-24	Sunny	12:23	55.9	50.5	
9-Aug-24	Sunny	12:28	56.1	50.7	
9-Aug-24	Sunny	12:33	55.1	50.8	
15-Aug-24	Cloudy	12:51	54.6	50.4	56
15-Aug-24	Cloudy	12:56	54.5	51.1	
15-Aug-24	Cloudy	13:01	53.7	50.4	
15-Aug-24	Cloudy	13:06	54.6	50.0	
15-Aug-24	Cloudy	13:11	54.3	51.0	
15-Aug-24	Cloudy	13:16	54.1	50.7	
21-Aug-24	Cloudy	13:42	56.7	52.9	58
21-Aug-24	Cloudy	13:47	56.7	53.4	
21-Aug-24	Cloudy	13:52	55.9	52.2	
21-Aug-24	Cloudy	13:57	56.6	52.9	
21-Aug-24	Cloudy	14:02	56.9	53.4	
21-Aug-24	Cloudy	14:07	57.3	53.9	
27-Aug-24	Sunny	12:29	59.1	54.8	53*
27-Aug-24	Sunny	12:34	59.2	54.1	
27-Aug-24	Sunny	12:39	58.8	55.4	
27-Aug-24	Sunny	12:44	58.2	55.0	
27-Aug-24	Sunny	12:49	58.8	54.7	
27-Aug-24	Sunny	12:54	58.9	54.9	

Remarks:

(^) +3dB (A) correction in Leq(30mins) dB(A) was applied to free-field measurement.

(*) The measurement result was corrected with reference to the baseline monitoring levels.

Noise Measurement Results

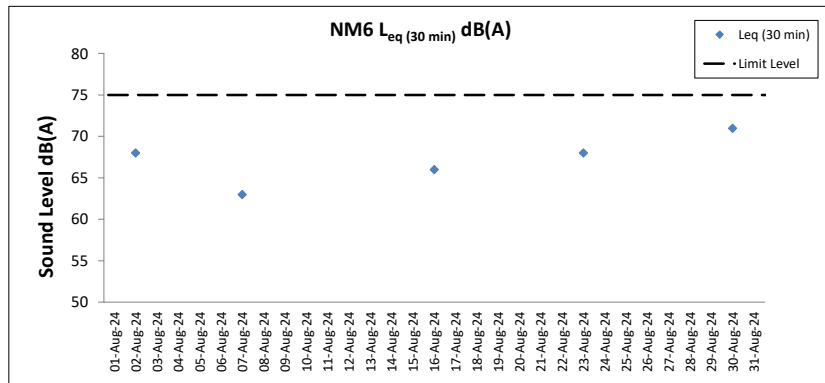
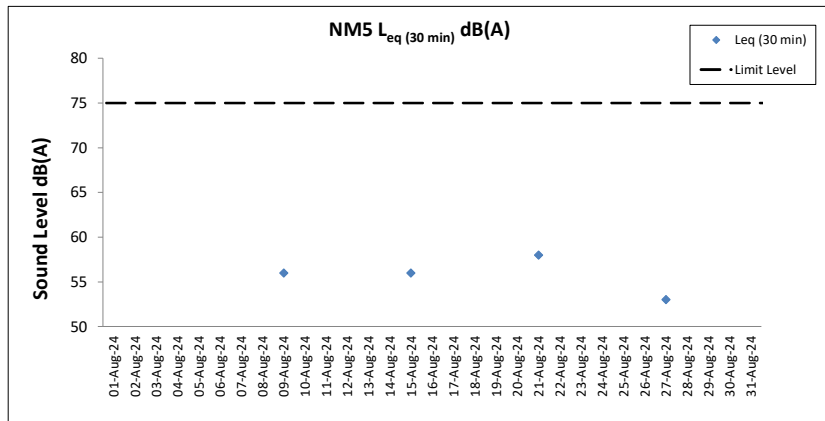
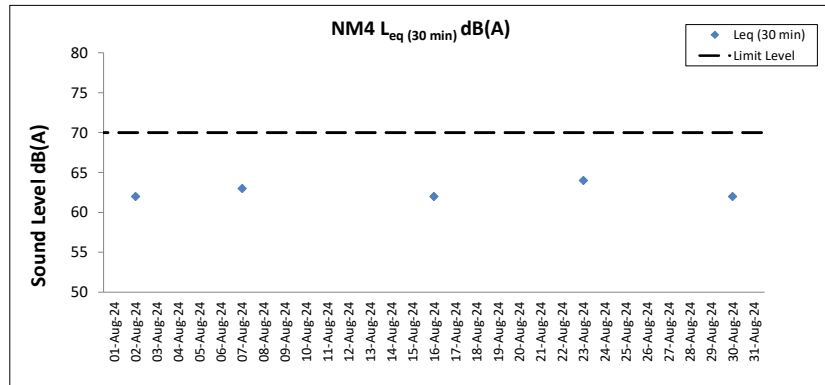
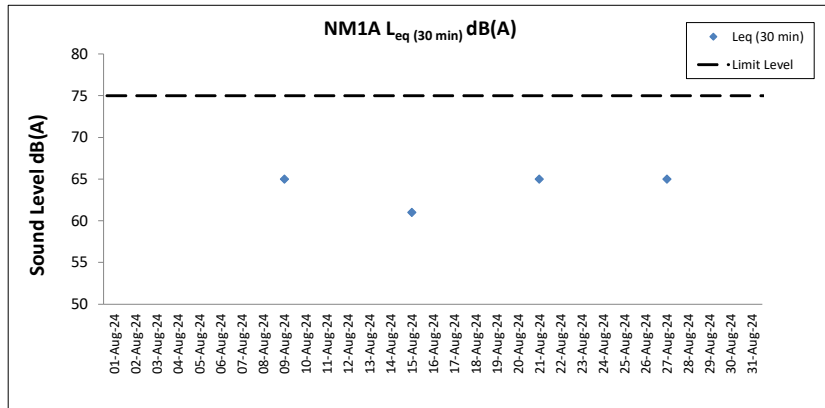
Station: NM6- House No.1 Sha Lo Wan

Date	Weather	Time	Measured L ₁₀ dB(A)	Measured L ₅₀ dB(A)	L _{eq(30mins)} dB(A) ^
2-Aug-24	Sunny	9:47	74.5	53.1	68*
2-Aug-24	Sunny	9:52	74.4	52.0	
2-Aug-24	Sunny	9:57	73.6	51.0	
2-Aug-24	Sunny	10:02	72.4	51.1	
2-Aug-24	Sunny	10:07	69.6	50.3	
2-Aug-24	Sunny	10:12	69.0	53.6	
7-Aug-24	Sunny	9:46	61.5	57.0	63
7-Aug-24	Sunny	9:51	60.4	56.5	
7-Aug-24	Sunny	9:56	60.6	56.7	
7-Aug-24	Sunny	10:01	61.0	56.8	
7-Aug-24	Sunny	10:06	60.3	56.6	
7-Aug-24	Sunny	10:11	64.5	57.7	
16-Aug-24	Cloudy	9:45	67.7	49.6	66*
16-Aug-24	Cloudy	9:50	67.1	48.4	
16-Aug-24	Cloudy	9:55	71.6	48.9	
16-Aug-24	Cloudy	10:00	68.8	48.5	
16-Aug-24	Cloudy	10:05	65.8	48.9	
16-Aug-24	Cloudy	10:10	65.2	49.0	
23-Aug-24	Sunny	9:44	70.7	50.7	68*
23-Aug-24	Sunny	9:49	70.6	49.8	
23-Aug-24	Sunny	9:54	72.2	57.0	
23-Aug-24	Sunny	9:59	71.8	53.8	
23-Aug-24	Sunny	10:04	69.8	49.1	
23-Aug-24	Sunny	10:09	73.5	50.6	
30-Aug-24	Sunny	15:43	70.0	52.9	71*
30-Aug-24	Sunny	15:48	62.8	52.8	
30-Aug-24	Sunny	15:53	73.6	57.6	
30-Aug-24	Sunny	15:58	76.5	67.0	
30-Aug-24	Sunny	16:03	70.8	68.2	
30-Aug-24	Sunny	16:08	72.2	63.8	

Remarks:

(^) +3dB (A) correction in Leq(30mins) dB(A) was applied to free-field measurement.

(*) The measurement result was corrected with reference to the baseline monitoring levels.



Notes

1. Major site activities carried out during the reporting period are summarized in Section 1.4 of the monthly EM&A report.
2. Weather conditions during monitoring are presented in the data tables above.
3. QA/QC requirements as stipulated in the EM&A Manual were carried out during measurement.

Post Construction Phase Chinese White Dolphin Monitoring Results

CWD Small Vessel Line-transect Survey

Survey Effort Data

DATE	AREA	BEAU	KM SEARCHED	SEASON	VESSEL	TYPE	P/S
05-Jun-24	AW	3	4.62	SUMMER	32166	3RS ET – POST	P
05-Jun-24	WL	2	8.54	SUMMER	32166	3RS ET – POST	P
05-Jun-24	WL	3	10.78	SUMMER	32166	3RS ET – POST	P
05-Jun-24	WL	4	1.2	SUMMER	32166	3RS ET – POST	P
05-Jun-24	WL	2	4.97	SUMMER	32166	3RS ET – POST	S
05-Jun-24	WL	3	4.29	SUMMER	32166	3RS ET – POST	S
05-Jun-24	WL	4	0.4	SUMMER	32166	3RS ET – POST	S
11-Jun-24	AW	2	1.97	SUMMER	32166	3RS ET – POST	P
11-Jun-24	AW	3	2.76	SUMMER	32166	3RS ET – POST	P
11-Jun-24	WL	3	21.783	SUMMER	32166	3RS ET – POST	P
11-Jun-24	WL	3	7.979	SUMMER	32166	3RS ET – POST	S
12-Jun-24	SWL	2	5.5	SUMMER	32166	3RS ET – POST	P
12-Jun-24	SWL	3	47.94	SUMMER	32166	3RS ET – POST	P
12-Jun-24	SWL	2	3.9	SUMMER	32166	3RS ET – POST	S
12-Jun-24	SWL	3	12.36	SUMMER	32166	3RS ET – POST	S
13-Jun-24	NEL	2	34.58	SUMMER	32166	3RS ET – POST	P
13-Jun-24	NEL	3	2.8	SUMMER	32166	3RS ET – POST	P
13-Jun-24	NEL	2	9.92	SUMMER	32166	3RS ET – POST	S
14-Jun-24	NEL	2	30.4	SUMMER	32166	3RS ET – POST	P
14-Jun-24	NEL	3	6.89	SUMMER	32166	3RS ET – POST	P
14-Jun-24	NEL	2	8.31	SUMMER	32166	3RS ET – POST	S
14-Jun-24	NEL	3	1.9	SUMMER	32166	3RS ET – POST	S
20-Jun-24	SWL	2	35.592	SUMMER	32166	3RS ET – POST	P
20-Jun-24	SWL	3	15.84	SUMMER	32166	3RS ET – POST	P
20-Jun-24	SWL	2	13.11	SUMMER	32166	3RS ET – POST	S
20-Jun-24	SWL	3	3.12	SUMMER	32166	3RS ET – POST	S
21-Jun-24	NWL	2	34	SUMMER	32166	3RS ET – POST	P
21-Jun-24	NWL	3	30	SUMMER	32166	3RS ET – POST	P
21-Jun-24	NWL	2	5.2	SUMMER	32166	3RS ET – POST	S
21-Jun-24	NWL	3	6.1	SUMMER	32166	3RS ET – POST	S
25-Jun-24	NWL	2	4.9	SUMMER	32166	3RS ET – POST	P
25-Jun-24	NWL	3	59.21	SUMMER	32166	3RS ET – POST	P
25-Jun-24	NWL	3	11.49	SUMMER	32166	3RS ET – POST	S
09-Jul-24	SWL	2	42.763	SUMMER	32166	3RS ET – POST	P
09-Jul-24	SWL	3	6.35	SUMMER	32166	3RS ET – POST	P
09-Jul-24	SWL	2	13.392	SUMMER	32166	3RS ET – POST	S
09-Jul-24	SWL	3	1.21	SUMMER	32166	3RS ET – POST	S
10-Jul-24	AW	2	4.66	SUMMER	32166	3RS ET – POST	P
10-Jul-24	WL	2	7.824	SUMMER	32166	3RS ET – POST	P
10-Jul-24	WL	3	10.296	SUMMER	32166	3RS ET – POST	P
10-Jul-24	WL	2	3.226	SUMMER	32166	3RS ET – POST	S
10-Jul-24	WL	3	6.112	SUMMER	32166	3RS ET – POST	S
11-Jul-24	SWL	2	37.688	SUMMER	32166	3RS ET – POST	P
11-Jul-24	SWL	3	14.317	SUMMER	32166	3RS ET – POST	P
11-Jul-24	SWL	2	9.23	SUMMER	32166	3RS ET – POST	S
11-Jul-24	SWL	3	4.815	SUMMER	32166	3RS ET – POST	S
11-Jul-24	SWL	4	1.3	SUMMER	32166	3RS ET – POST	S
12-Jul-24	AW	2	4.77	SUMMER	32166	3RS ET – POST	P
12-Jul-24	WL	2	7.46	SUMMER	32166	3RS ET – POST	P
12-Jul-24	WL	3	10.856	SUMMER	32166	3RS ET – POST	P
12-Jul-24	WL	2	2.38	SUMMER	32166	3RS ET – POST	S
12-Jul-24	WL	3	6.849	SUMMER	32166	3RS ET – POST	S

DATE	AREA	BEAU	KM SEARCHED	SEASON	VESSEL	TYPE	P/S
15-Jul-24	NEL	2	36.94	SUMMER	32166	3RS ET – POST	P
15-Jul-24	NEL	2	9.76	SUMMER	32166	3RS ET – POST	S
16-Jul-24	NEL	2	28.37	SUMMER	32166	3RS ET – POST	P
16-Jul-24	NEL	3	5.2	SUMMER	32166	3RS ET – POST	P
16-Jul-24	NEL	4	3.29	SUMMER	32166	3RS ET – POST	P
16-Jul-24	NEL	2	9.06	SUMMER	32166	3RS ET – POST	S
16-Jul-24	NEL	3	0.9	SUMMER	32166	3RS ET – POST	S
18-Jul-24	NWL	2	4.9	SUMMER	32166	3RS ET – POST	P
18-Jul-24	NWL	3	55.8	SUMMER	32166	3RS ET – POST	P
18-Jul-24	NWL	4	3	SUMMER	32166	3RS ET – POST	P
18-Jul-24	NWL	2	0.9	SUMMER	32166	3RS ET – POST	S
18-Jul-24	NWL	3	10.4	SUMMER	32166	3RS ET – POST	S
31-Jul-24	NWL	2	3	SUMMER	32166	3RS ET – POST	P
31-Jul-24	NWL	3	37.1	SUMMER	32166	3RS ET – POST	P
31-Jul-24	NWL	4	23	SUMMER	32166	3RS ET – POST	P
31-Jul-24	NWL	3	8.2	SUMMER	32166	3RS ET – POST	S
31-Jul-24	NWL	4	3.1	SUMMER	32166	3RS ET – POST	S
07-Aug-24	SWL	2	52.07	SUMMER	32166	3RS ET – POST	P
07-Aug-24	SWL	2	15.46	SUMMER	32166	3RS ET – POST	S
08-Aug-24	SWL	2	11.51	SUMMER	32166	3RS ET – POST	P
08-Aug-24	SWL	3	42.32	SUMMER	32166	3RS ET – POST	P
08-Aug-24	SWL	2	2.4	SUMMER	32166	3RS ET – POST	S
08-Aug-24	SWL	3	12.57	SUMMER	32166	3RS ET – POST	S
12-Aug-24	NWL	2	11.6	SUMMER	32166	3RS ET – POST	P
12-Aug-24	NWL	3	52.5	SUMMER	32166	3RS ET – POST	P
12-Aug-24	NWL	2	6.7	SUMMER	32166	3RS ET – POST	S
12-Aug-24	NWL	3	5.1	SUMMER	32166	3RS ET – POST	S
13-Aug-24	AW	2	4.61	SUMMER	32166	3RS ET – POST	P
13-Aug-24	WL	2	16.055	SUMMER	32166	3RS ET – POST	P
13-Aug-24	WL	2	7.193	SUMMER	32166	3RS ET – POST	S
14-Aug-24	NWL	2	37.1	SUMMER	32166	3RS ET – POST	P
14-Aug-24	NWL	3	19.82	SUMMER	32166	3RS ET – POST	P
14-Aug-24	NWL	4	6.88	SUMMER	32166	3RS ET – POST	P
14-Aug-24	NWL	2	7.4	SUMMER	32166	3RS ET – POST	S
14-Aug-24	NWL	3	4.2	SUMMER	32166	3RS ET – POST	S
15-Aug-24	NEL	2	20.02	SUMMER	32166	3RS ET – POST	P
15-Aug-24	NEL	3	16.3	SUMMER	32166	3RS ET – POST	P
15-Aug-24	NEL	4	1.4	SUMMER	32166	3RS ET – POST	P
15-Aug-24	NEL	2	6.88	SUMMER	32166	3RS ET – POST	S
15-Aug-24	NEL	3	2	SUMMER	32166	3RS ET – POST	S
15-Aug-24	NEL	4	0.9	SUMMER	32166	3RS ET – POST	S
20-Aug-24	NEL	1	0.2	SUMMER	32166	3RS ET – POST	P
20-Aug-24	NEL	2	31.25	SUMMER	32166	3RS ET – POST	P
20-Aug-24	NEL	3	5.9	SUMMER	32166	3RS ET – POST	P
20-Aug-24	NEL	1	1.2	SUMMER	32166	3RS ET – POST	S
20-Aug-24	NEL	2	8.65	SUMMER	32166	3RS ET – POST	S
23-Aug-24	AW	2	5.13	SUMMER	32166	3RS ET – POST	P
23-Aug-24	WL	2	18.156	SUMMER	32166	3RS ET – POST	P
23-Aug-24	WL	2	9.121	SUMMER	32166	3RS ET – POST	S

Notes: CWD monitoring survey data of the two preceding survey months are presented for reference only.

CWD Small Vessel Line-transect Survey

Sighting Data

DATE	STG #	TIME	CWD/FP	GP SZ	AREA	BEAU	PSD	EFFORT	TYPE	DEC LAT	DEC LON	SEASON	BOAT ASSOC.	P/S
05-Jun-24	1	1153	CWD	7	WL	3	127	ON	3RS ET – POST	22.193425	113.842457	SUMMER	NONE	S
11-Jun-24	1	1044	CWD	2	WL	3	233	ON	3RS ET – POST	22.254940	113.835700	SUMMER	NONE	S
11-Jun-24	2	1110	CWD	2	WL	3	773	ON	3RS ET – POST	22.241973	113.838163	SUMMER	PURSE SEINER	P
11-Jun-24	3	1129	CWD	3	WL	3	119	ON	3RS ET – POST	22.238116	113.826417	SUMMER	NONE	S
11-Jun-24	4	1143	CWD	2	WL	3	305	ON	3RS ET – POST	22.223311	113.831120	SUMMER	PURSE SEINER	P
11-Jun-24	5	1211	CWD	1	WL	3	41	ON	3RS ET – POST	22.217972	113.819614	SUMMER	NONE	S
20-Jun-24	1	1121	CWD	1	SWL	2	533	ON	3RS ET – POST	22.205144	113.918873	SUMMER	GILLNETTER	S
20-Jun-24	2	1144	CWD	1	SWL	2	99	ON	3RS ET – POST	22.192009	113.918474	SUMMER	NONE	P
20-Jun-24	3	1219	CWD	1	SWL	2	51	ON	3RS ET – POST	22.154684	113.905568	SUMMER	NONE	S
20-Jun-24	4	1244	CWD	8	SWL	2	38	ON	3RS ET – POST	22.192402	113.906930	SUMMER	NONE	S
20-Jun-24	5	1400	CWD	9	SWL	3	300	ON	3RS ET – POST	22.181793	113.887713	SUMMER	NONE	P
20-Jun-24	6	1519	CWD	2	SWL	2	31	ON	3RS ET – POST	22.192438	113.858869	SUMMER	NONE	P
25-Jun-24	1	1021	CWD	1	NWL	3	100	ON	3RS ET – POST	22.309436	113.870352	SUMMER	NONE	P
09-Jul-24	2	1345	CWD	7	SWL	2	17	ON	3RS ET – POST	22.189164	113.887583	SUMMER	NONE	P
09-Jul-24	3	1404	CWD	4	SWL	2	24	ON	3RS ET – POST	22.197137	113.887181	SUMMER	PURSE SEINER	P
09-Jul-24	4	1435	CWD	1	SWL	2	482	ON	3RS ET – POST	22.191283	113.879085	SUMMER	NONE	P
09-Jul-24	5	1448	CWD	2	SWL	3	186	ON	3RS ET – POST	22.180607	113.878580	SUMMER	PURSE SEINER	P
09-Jul-24	6	1516	CWD	6	SWL	3	433	ON	3RS ET – POST	22.174373	113.868995	SUMMER	NONE	P
09-Jul-24	7	1537	CWD	2	SWL	2	220	ON	3RS ET – POST	22.190265	113.869258	SUMMER	NONE	P
09-Jul-24	8	1558	CWD	3	SWL	2	199	ON	3RS ET – POST	22.189163	113.859117	SUMMER	NONE	P
09-Jul-24	9	1605	CWD	4	SWL	2	105	ON	3RS ET – POST	22.184422	113.859532	SUMMER	NONE	P
09-Jul-24	10	1614	CWD	1	SWL	3	189	ON	3RS ET – POST	22.175476	113.859154	SUMMER	NONE	P
09-Jul-24	11	1618	CWD	2	SWL	3	27	ON	3RS ET – POST	22.182510	113.850143	SUMMER	NONE	P
09-Jul-24	12	1635	CWD	4	SWL	3	99	ON	3RS ET – POST	22.190094	113.850449	SUMMER	NONE	P
10-Jul-24	1	1021	CWD	4	WL	2	417	ON	3RS ET – POST	22.274378	113.847994	SUMMER	PURSE SEINER	S
10-Jul-24	2	1115	CWD	4	WL	2	270	ON	3RS ET – POST	22.238347	113.827155	SUMMER	NONE	S
10-Jul-24	3	1119	CWD	5	WL	3	57	ON	3RS ET – POST	22.235064	113.826031	SUMMER	NONE	S
10-Jul-24	4	1140	CWD	7	WL	3	272	ON	3RS ET – POST	22.223808	113.831824	SUMMER	NONE	P
10-Jul-24	5	1201	CWD	1	WL	3	96	ON	3RS ET – POST	22.214815	113.829508	SUMMER	NONE	P
10-Jul-24	6	1219	CWD	6	WL	3	600	ON	3RS ET – POST	22.205413	113.835764	SUMMER	NONE	P
10-Jul-24	7	1235	CWD	1	WL	3	176	ON	3RS ET – POST	22.195427	113.838294	SUMMER	NONE	P

DATE	STG #	TIME	CWD/FP	GP SZ	AREA	BEAU	PSD	EFFORT	TYPE	DEC LAT	DEC LON	SEASON	BOAT ASSOC.	P/S
10-Jul-24	8	1248	CWD	2	WL	3	96	ON	3RS ET – POST	22.196335	113.841044	SUMMER	NONE	P
11-Jul-24	2	1442	CWD	3	SWL	2	105	ON	3RS ET – POST	22.200599	113.866037	SUMMER	NONE	S
11-Jul-24	3	1520	CWD	3	SWL	3	150	ON	3RS ET – POST	22.185459	113.848936	SUMMER	NONE	P
12-Jul-24	1	1102	CWD	7	WL	3	120	ON	3RS ET – POST	22.241310	113.837431	SUMMER	NONE	P
12-Jul-24	2	1129	CWD	2	WL	3	22	ON	3RS ET – POST	22.232020	113.833559	SUMMER	NONE	P
12-Jul-24	3	1206	CWD	9	WL	3	20	ON	3RS ET – POST	22.210995	113.838672	SUMMER	NONE	P
12-Jul-24	4	1225	CWD	1	WL	3	11	ON	3RS ET – POST	22.204993	113.834609	SUMMER	NONE	P
12-Jul-24	5	1229	CWD	1	WL	3	255	ON	3RS ET – POST	22.205064	113.831774	SUMMER	NONE	P
12-Jul-24	6	1251	CWD	11	WL	3	56	ON	3RS ET – POST	22.196207	113.837629	SUMMER	NONE	P
07-Aug-24	1	1125	FP	4	SWL	2	114	ON	3RS ET – POST	22.181604	113.927613	SUMMER	NONE	P
07-Aug-24	2	1436	CWD	10	SWL	2	730	ON	3RS ET – POST	22.178239	113.869397	SUMMER	PURSE SEINER	P
07-Aug-24	3	1500	CWD	2	SWL	2	93	ON	3RS ET – POST	22.190175	113.868994	SUMMER	NONE	P
08-Aug-24	1	1255	CWD	1	SWL	3	115	ON	3RS ET – POST	22.208114	113.898101	SUMMER	NONE	P
08-Aug-24	2	1528	CWD	1	SWL	3	209	ON	3RS ET – POST	22.187852	113.850961	SUMMER	NONE	P
08-Aug-24	3	1539	CWD	5	SWL	3	340	ON	3RS ET – POST	22.191299	113.850219	SUMMER	NONE	P
13-Aug-24	1	1026	CWD	2	WL	2	279	ON	3RS ET – POST	22.276314	113.850779	SUMMER	NONE	S
13-Aug-24	2	1029	CWD	4	WL	2	73	ON	3RS ET – POST	22.274353	113.849073	SUMMER	NONE	S
13-Aug-24	3	1049	CWD	6	WL	2	780	ON	3RS ET – POST	22.268972	113.851556	SUMMER	NONE	P
13-Aug-24	4	1106	CWD	2	WL	2	56	ON	3RS ET – POST	22.261087	113.847140	SUMMER	NONE	P
13-Aug-24	5	1130	CWD	4	WL	2	460	ON	3RS ET – POST	22.249906	113.845212	SUMMER	NONE	P
13-Aug-24	6	1155	CWD	1	WL	2	61	ON	3RS ET – POST	22.241160	113.840797	SUMMER	NONE	P
13-Aug-24	7	1219	CWD	1	WL	2	25	ON	3RS ET – POST	22.230694	113.838275	SUMMER	NONE	S
13-Aug-24	8	1223	CWD	11	WL	2	119	ON	3RS ET – POST	22.225699	113.837617	SUMMER	NONE	S
13-Aug-24	9	1259	CWD	2	WL	2	39	ON	3RS ET – POST	22.214130	113.823569	SUMMER	NONE	P
13-Aug-24	10	1309	CWD	2	WL	2	46	ON	3RS ET – POST	22.214249	113.834008	SUMMER	NONE	P
13-Aug-24	11	1317	CWD	2	WL	2	40	ON	3RS ET – POST	22.209576	113.839496	SUMMER	NONE	S
13-Aug-24	12	1325	CWD	1	WL	2	63	ON	3RS ET – POST	22.204847	113.836614	SUMMER	NONE	P
13-Aug-24	13	1339	CWD	4	WL	2	96	ON	3RS ET – POST	22.195582	113.831013	SUMMER	NONE	P
23-Aug-24	1	1011	CWD	6	WL	2	6	ON	3RS ET – POST	22.265732	113.855409	SUMMER	NONE	S
23-Aug-24	2	1102	CWD	1	WL	2	1964	ON	3RS ET – POST	22.241990	113.842909	SUMMER	NONE	P
23-Aug-24	3	1124	CWD	2	WL	2	149	ON	3RS ET – POST	22.232578	113.833757	SUMMER	NONE	P
23-Aug-24	4	1144	CWD	7	WL	2	102	ON	3RS ET – POST	22.224634	113.837657	SUMMER	NONE	S
23-Aug-24	5	1201	CWD	2	WL	2	183	ON	3RS ET – POST	22.223598	113.831367	SUMMER	NONE	P

DATE	STG #	TIME	CWD/FP	GP SZ	AREA	BEAU	PSD	EFFORT	TYPE	DEC LAT	DEC LON	SEASON	BOAT ASSOC.	P/S
23-Aug-24	6	1227	CWD	2	WL	2	50	ON	3RS ET – POST	22.205672	113.837604	SUMMER	NONE	S
23-Aug-24	7	1302	CWD	1	WL	2	367	ON	3RS ET – POST	22.193667	113.842429	SUMMER	NONE	S

Abbreviations: STG# = Sighting Number; GP SZ = Group Size; BEAU = Beaufort Sea State; PSD = Perpendicular Distance (in metres); N/A = Not Applicable;
 DEC LAT = Latitude (WGS84 in Decimal), DEC LON = Longitude (WGS84 in Decimal); BOAT ASSOC. = Fishing Boat Association; P/S = Primary Transect / Secondary
 Transect







Notes:

CWD monitoring survey data of the two preceding survey months are presented for reference only. No relevant figure or text will be mentioned in this monthly EM&A report.

Sighting data of finless porpoise (FP) are presented for reference only. No relevant figure or text will be mentioned in the monthly EM&A report. All FP sightings are excluded in calculation.

CWD Small Vessel Line-transect Survey

Photo Identification

	
SLMM002_20240807_2_1	SLMM034_20240807_2_1
	
SLMM050_20240807_2_8	WLMM056_20240807_2_3
	
WLMM065_20240807_2_2	WLMM111_20240807_2_4



WLMM114_20240807_2_1



WLMM043_20240807_3_10



WLMM200_20240807_3_5



SLMM055_20240808_3_3



WLMM058_20240808_3_5



NLMM012_20240813_2_3



NLMM039_20240813_2_7



NLMM013_20240813_3_3



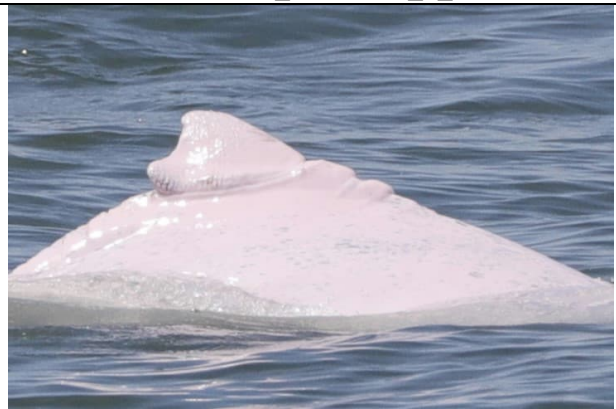
NLMM052_20240813_3_5



NLMM065_20240813_3_3



NLMM070_20240813_3_4



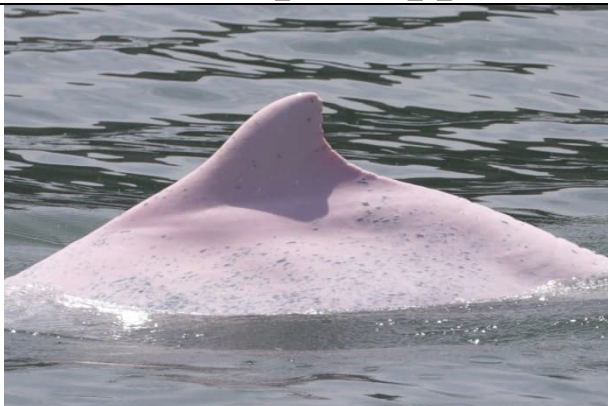
WLMM201_20240813_3_3



WLMM154_20240813_4_9



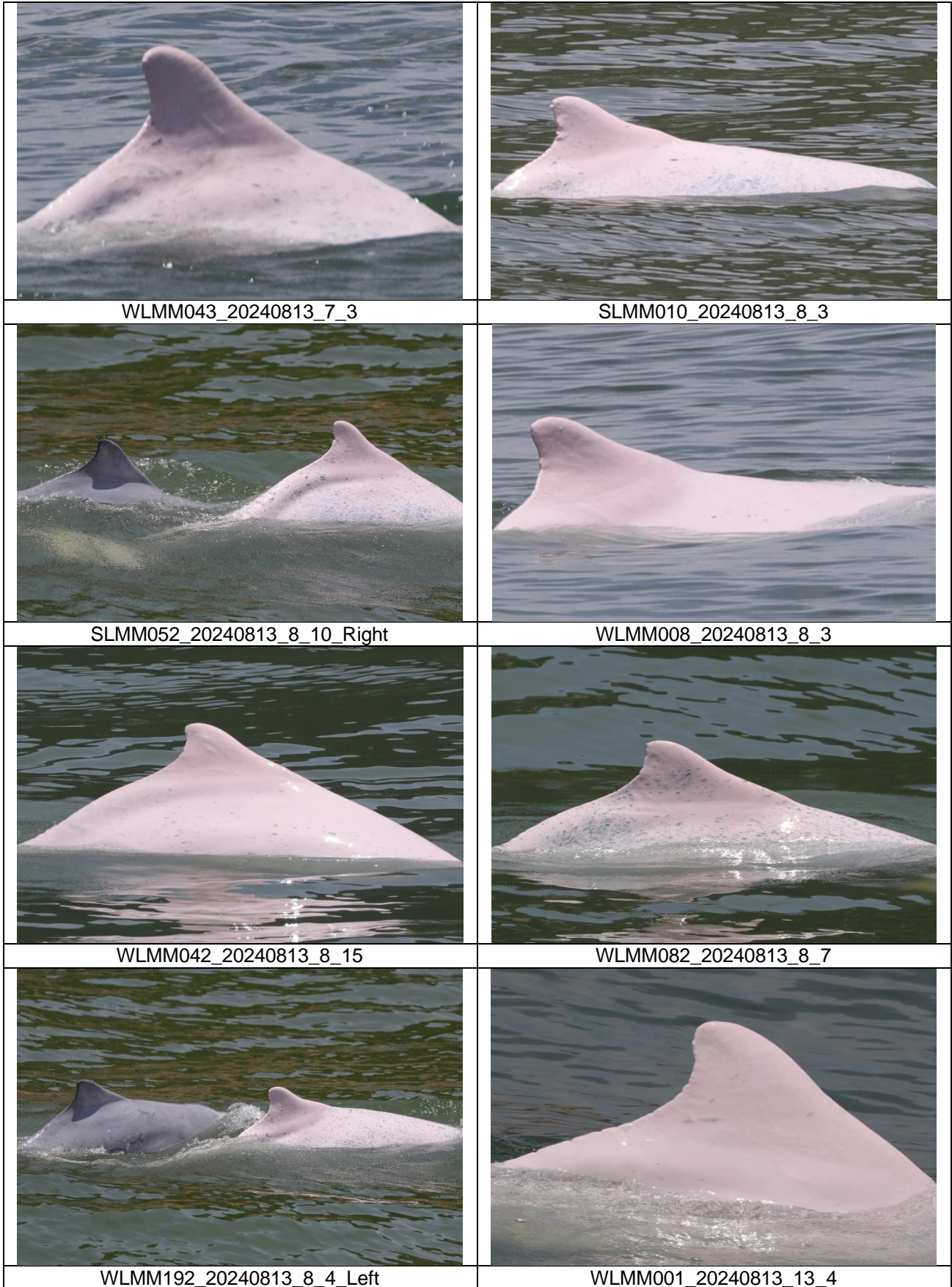
WLMM067_20240813_5_5



WLMM118_20240813_5_3



WLMM141_20240813_5_6





WLMM003_20240813_13_6



SLMM058_20240823_1_1



WLMM065_20240823_1_3



WLMM168_20240823_1_1



WLMM196_20240823_1_4



WLMM197_20240823_1_2



WLMM003_20240823_3_13



WLMM202_20240823_3_1



SLMM003_20240823_4_1



SLMM049_20240823_4_2



WLMM003_20240823_4_1_Left



WLMM079_20240823_4_6



WLMM147_20240823_4_5



WLMM202_20240823_4_1_Right



NLMM028_20240823_5_3



WLMM003_20240823_6_9