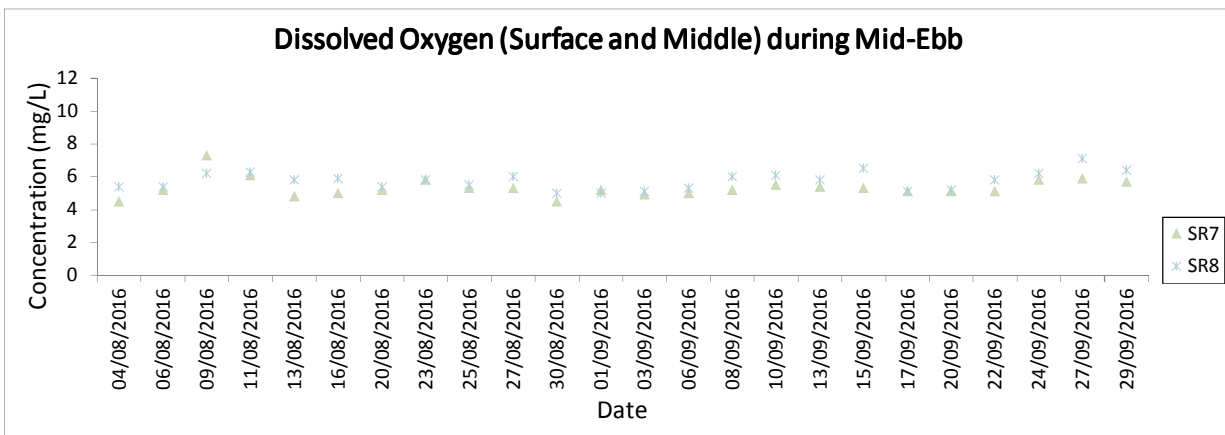
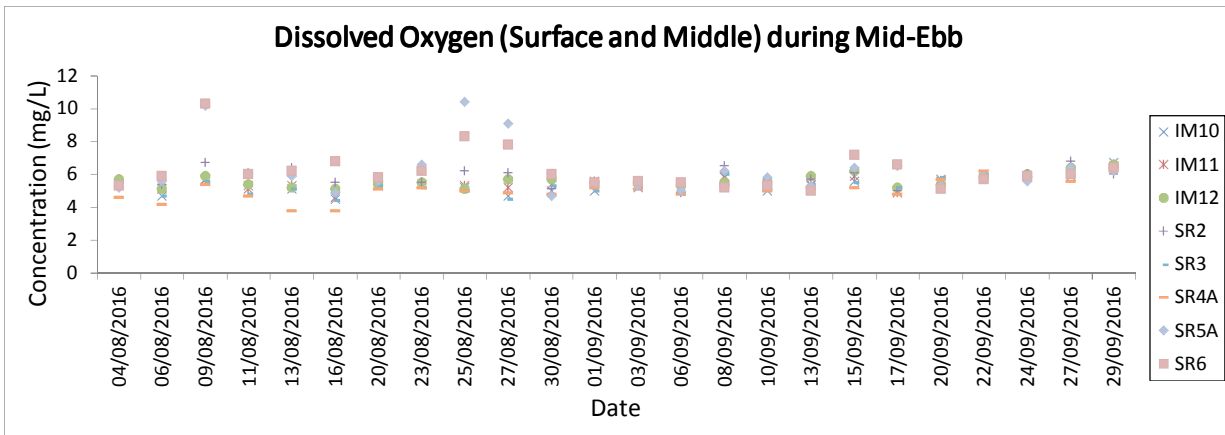
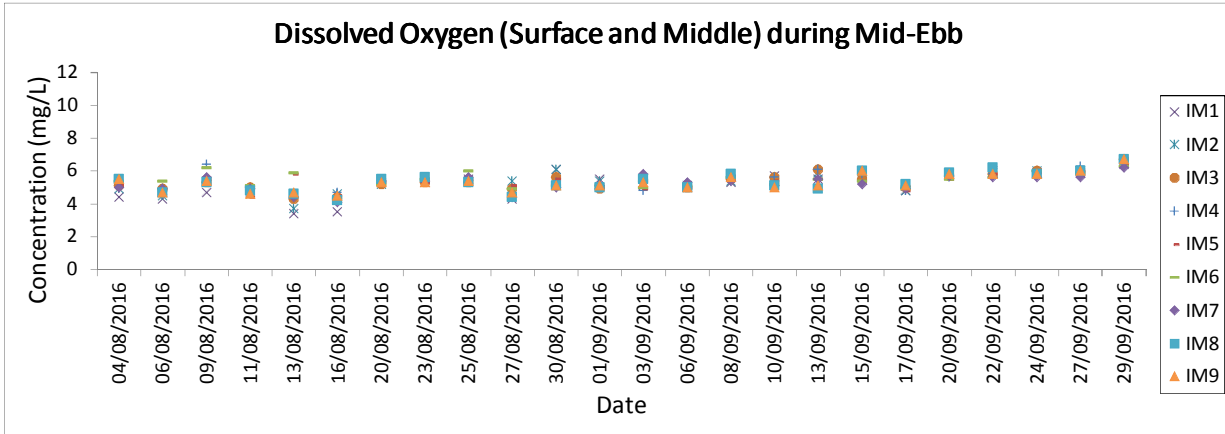
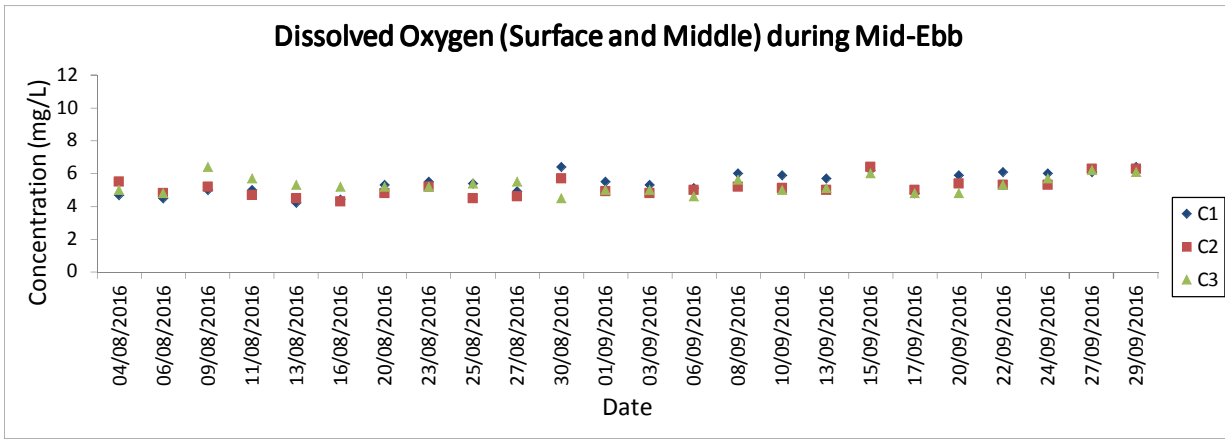
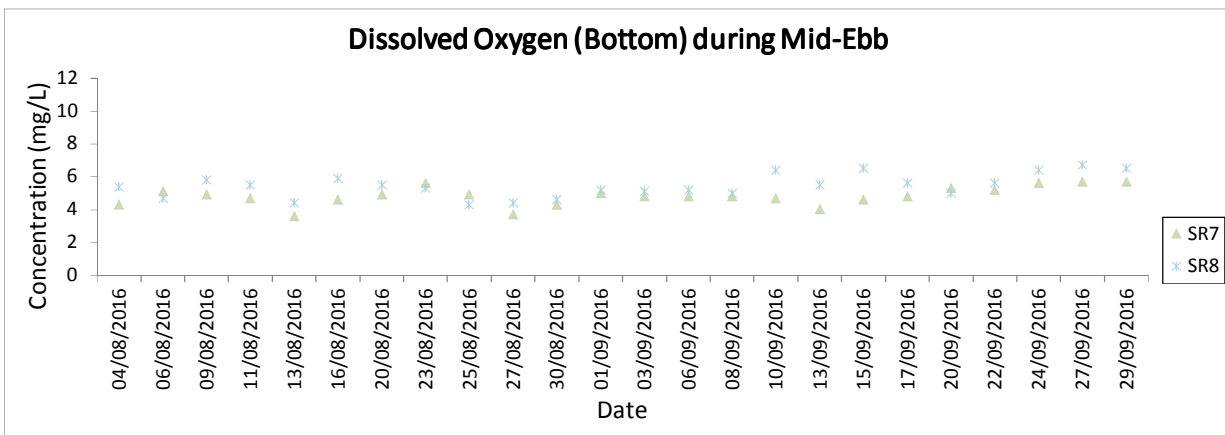
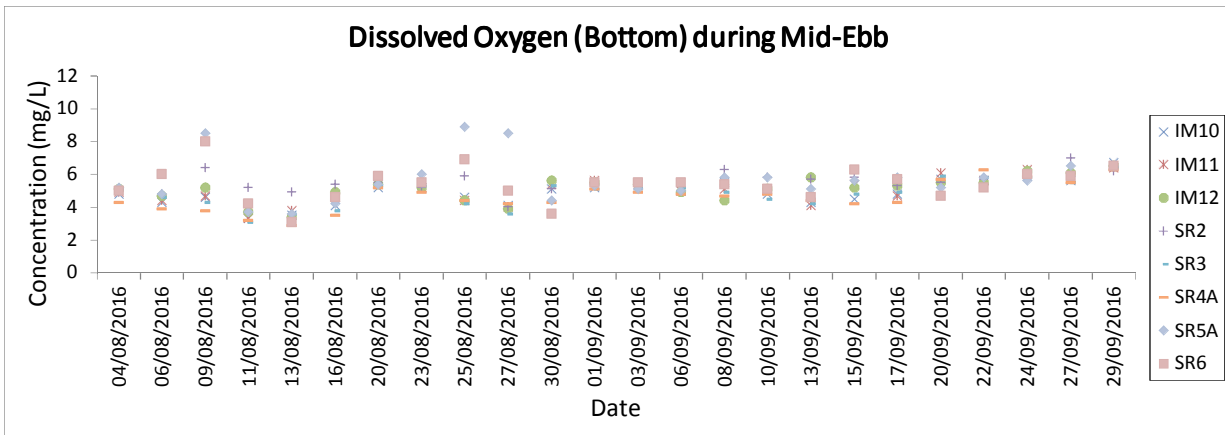
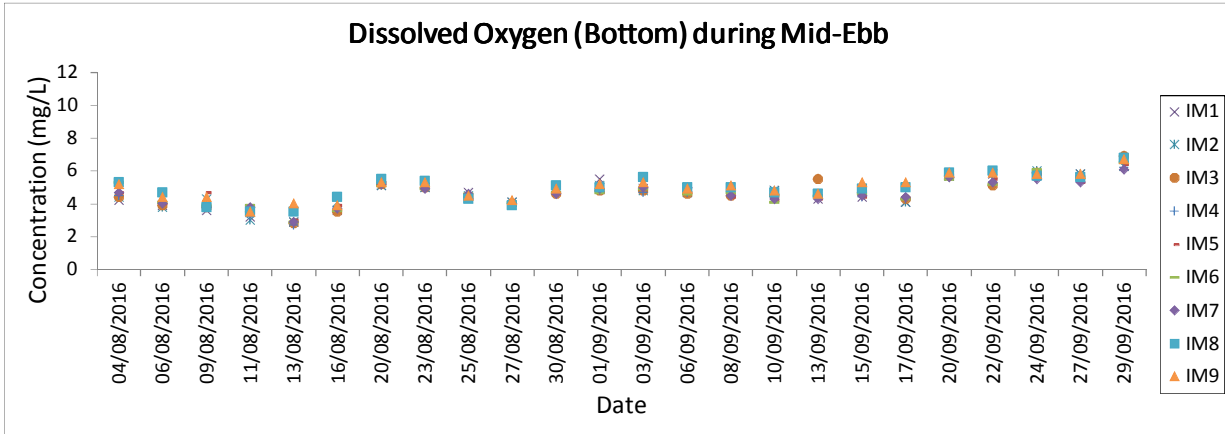
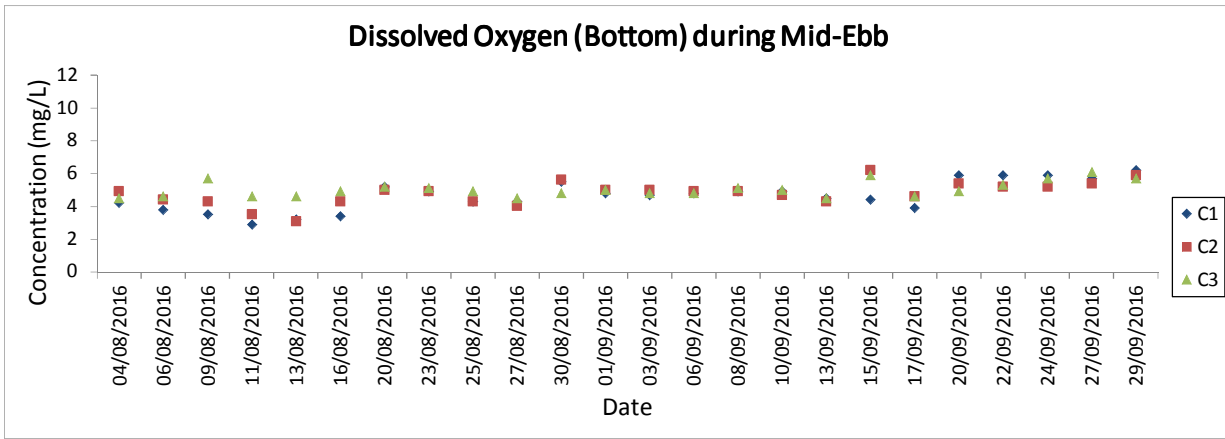


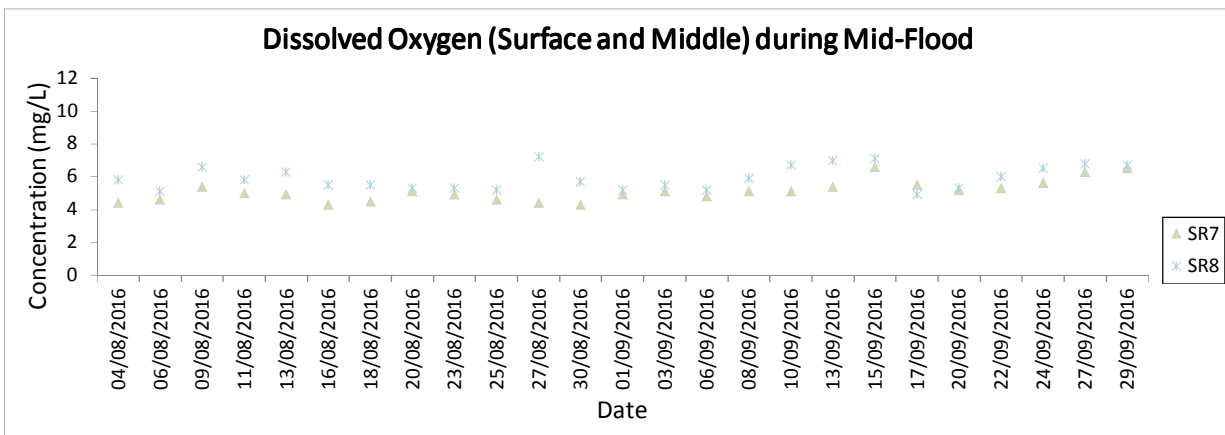
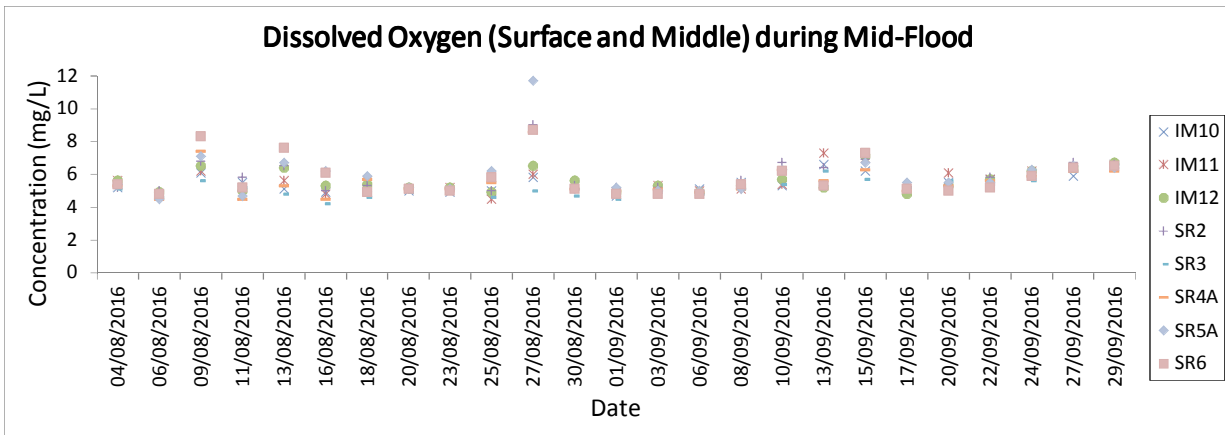
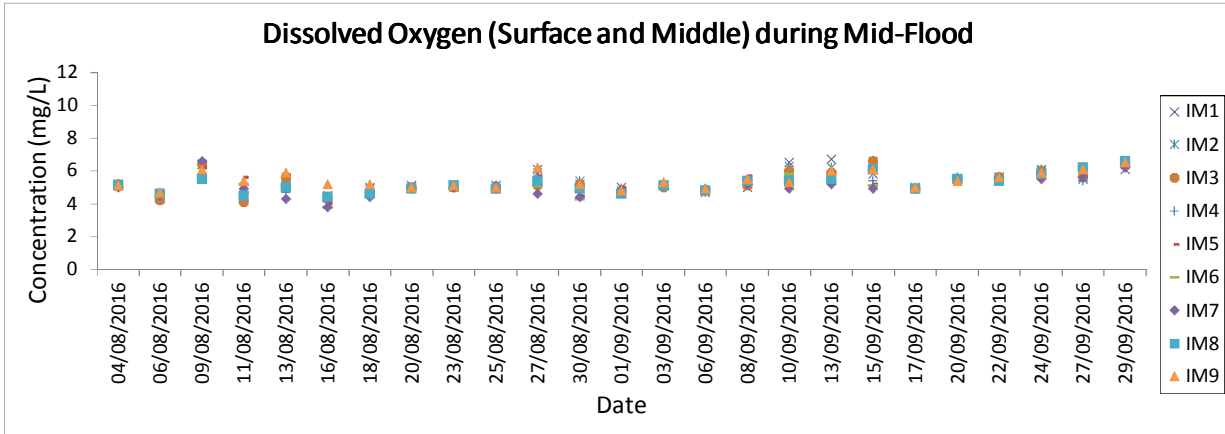
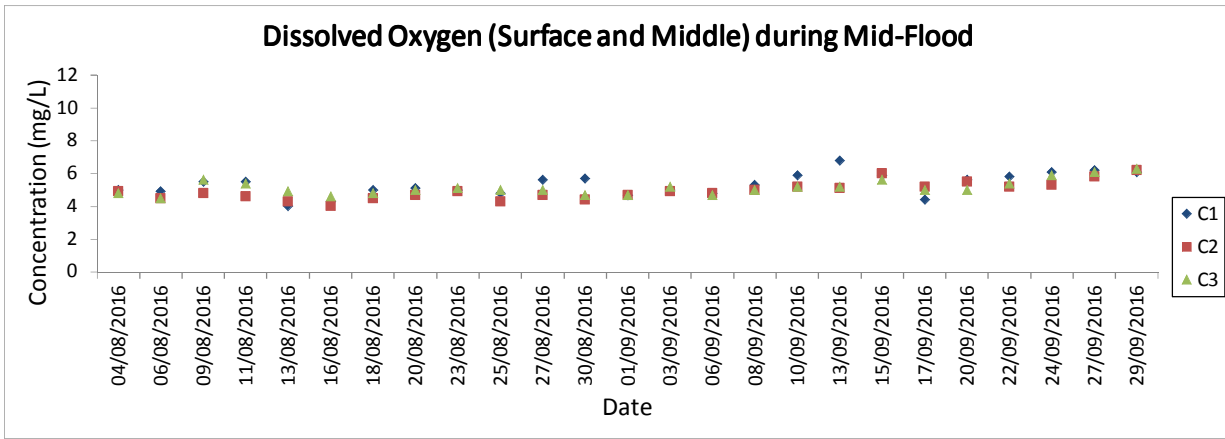
## **Appendix D. Graphical Plots of Water Quality Monitoring Result**



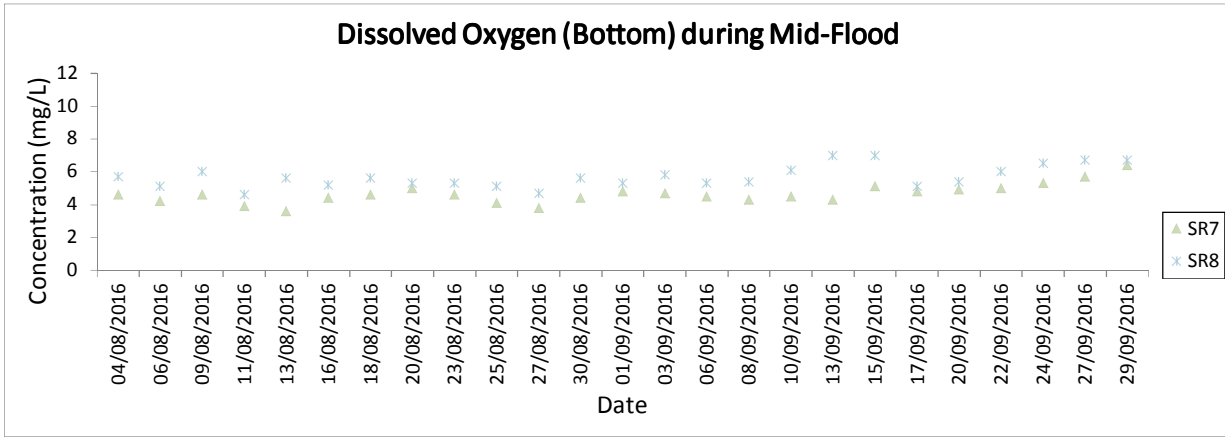
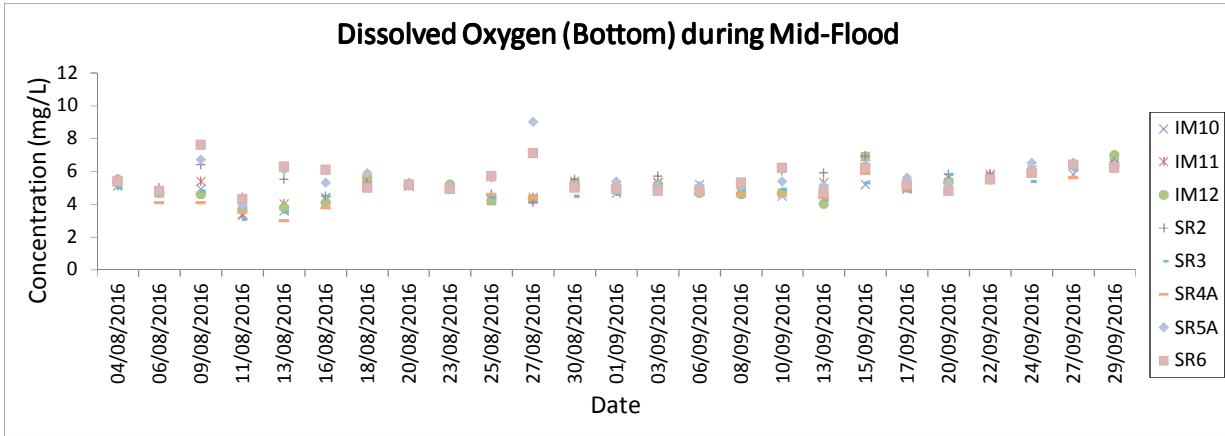
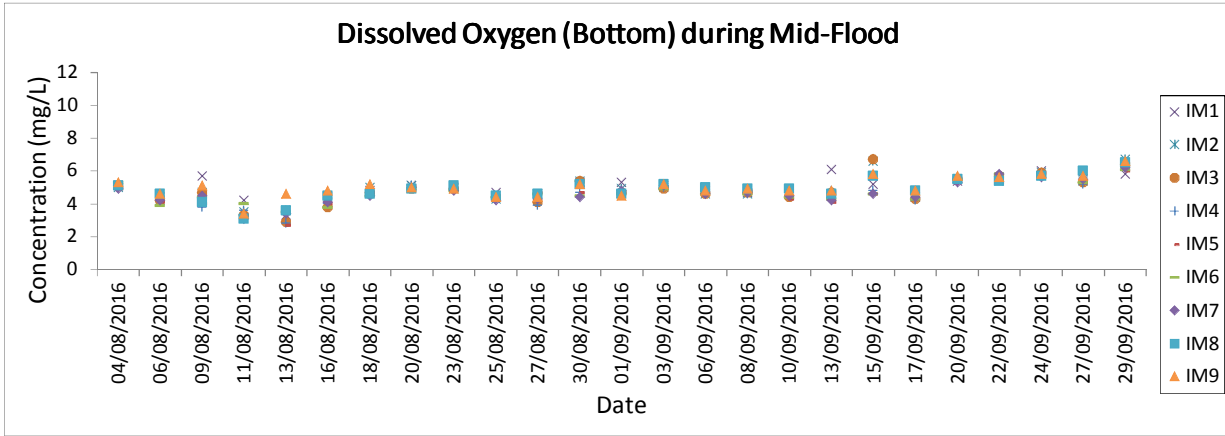
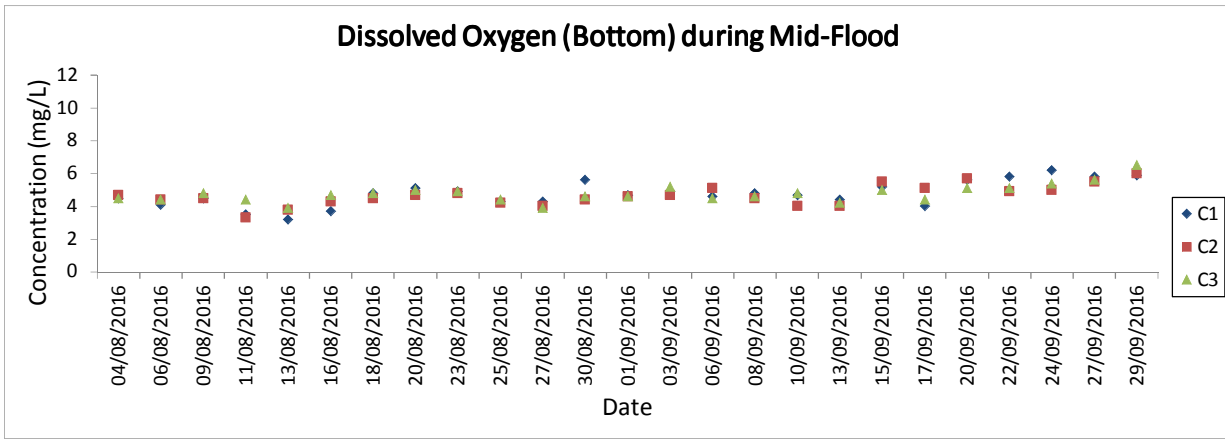
Note: The action and limit level of DO can be referred to Table 2.4 of the quarterly EM&A report.  
 The scheduled water quality monitoring on 2 August 2016 during ebb and flood tides and 18 August 2016 during ebb tide were cancelled due to adverse weather conditions.



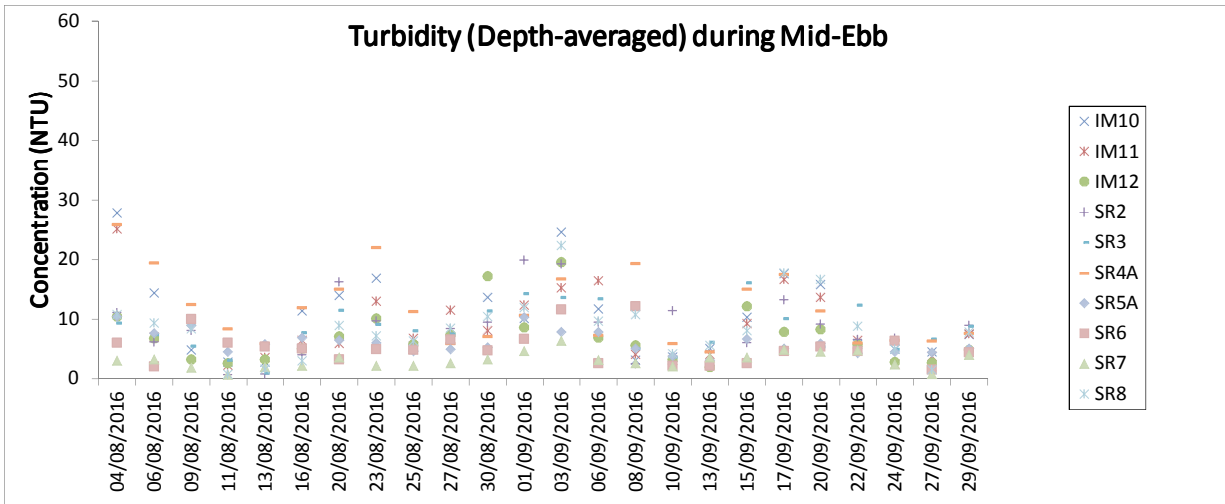
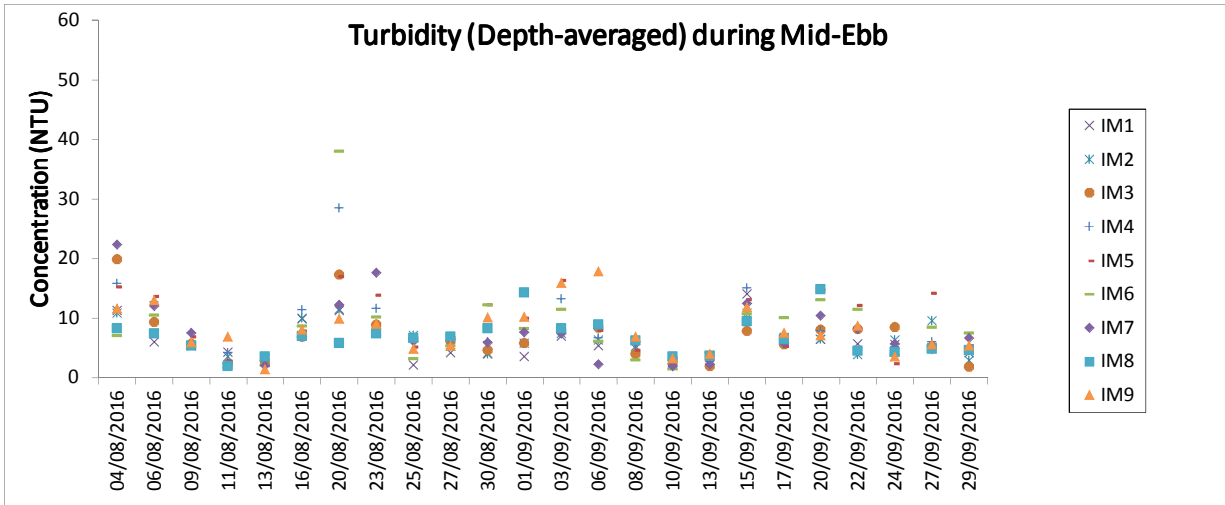
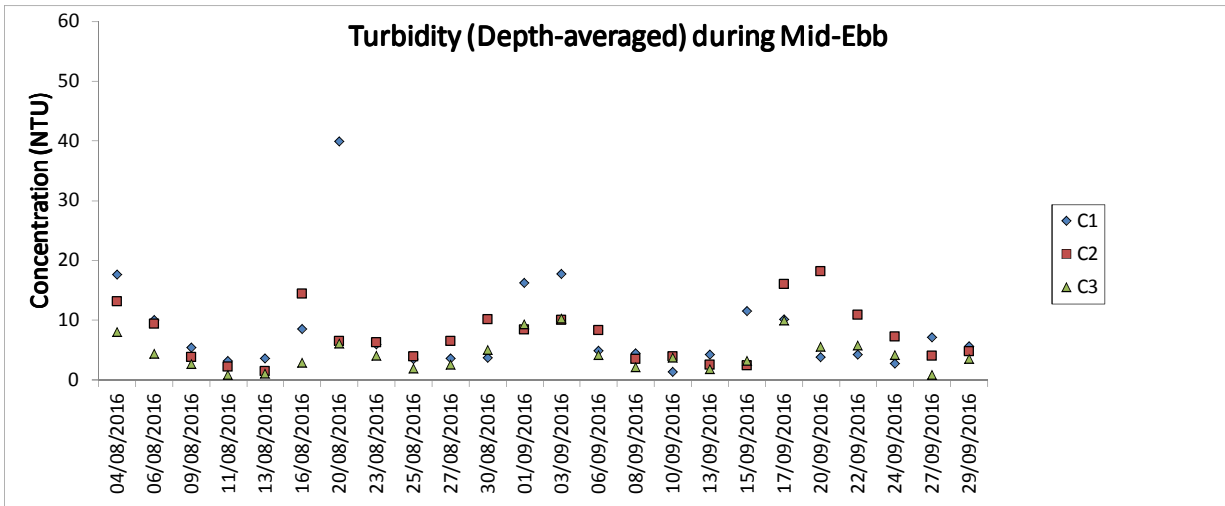
Note: The action and limit level of DO can be referred to Table 2.4 of the quarterly EM&A report.  
 The scheduled water quality monitoring on 2 August 2016 during ebb and flood tides and 18 August 2016 during ebb tide were cancelled due to adverse weather conditions.



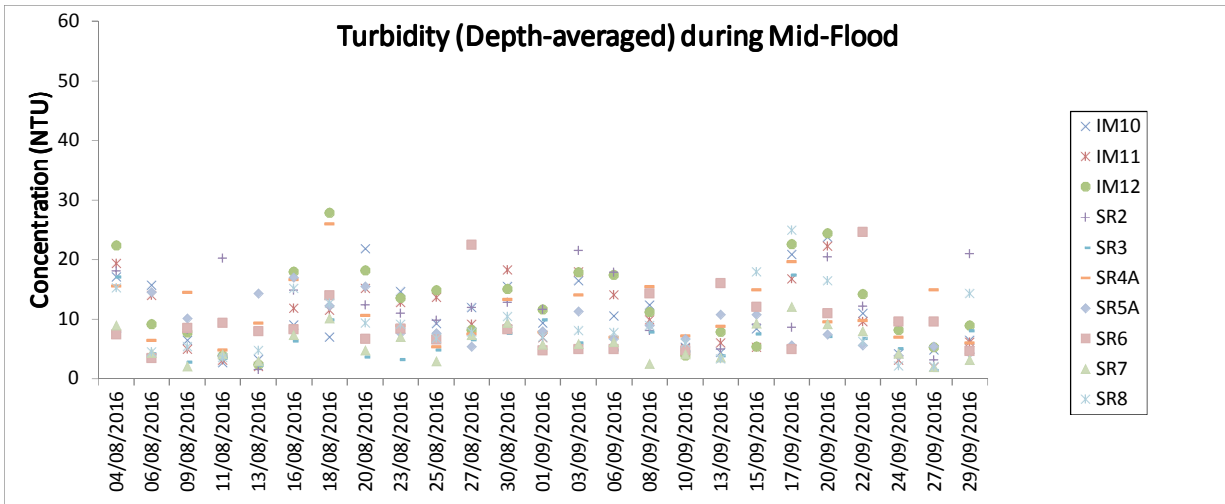
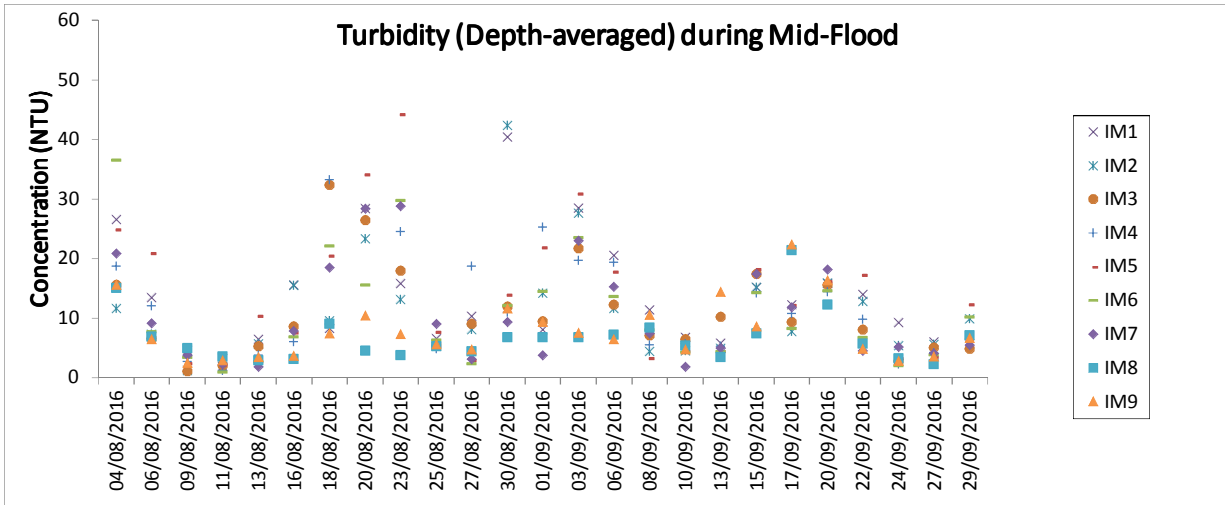
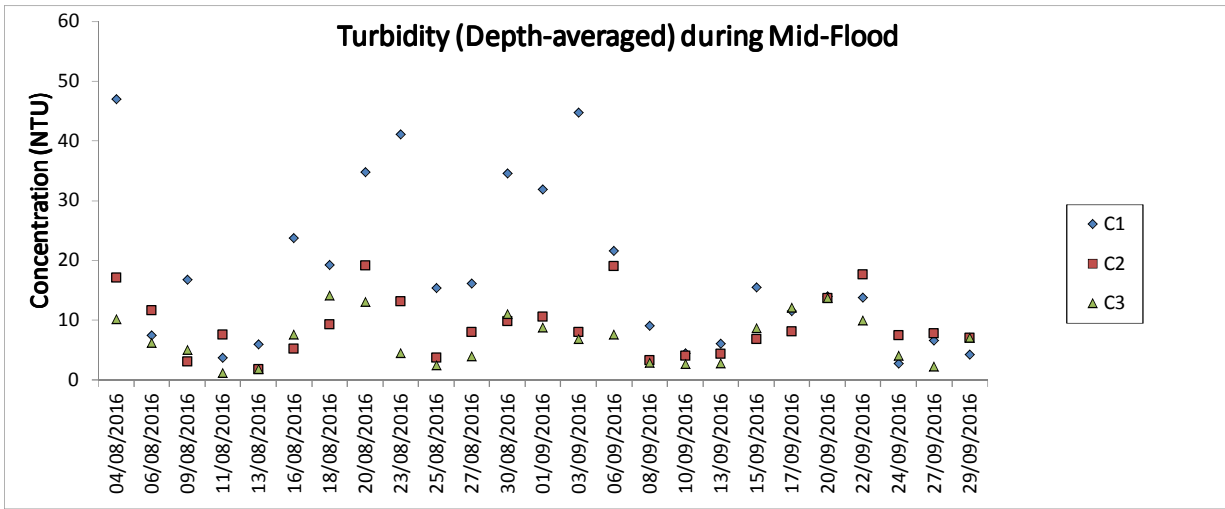
Note: The action and limit level of DO can be referred to Table 2.4 of the quarterly EM&A report.  
 The scheduled water quality monitoring on 2 August 2016 during ebb and flood tides and 18 August 2016 during ebb tide were cancelled due to adverse weather conditions.



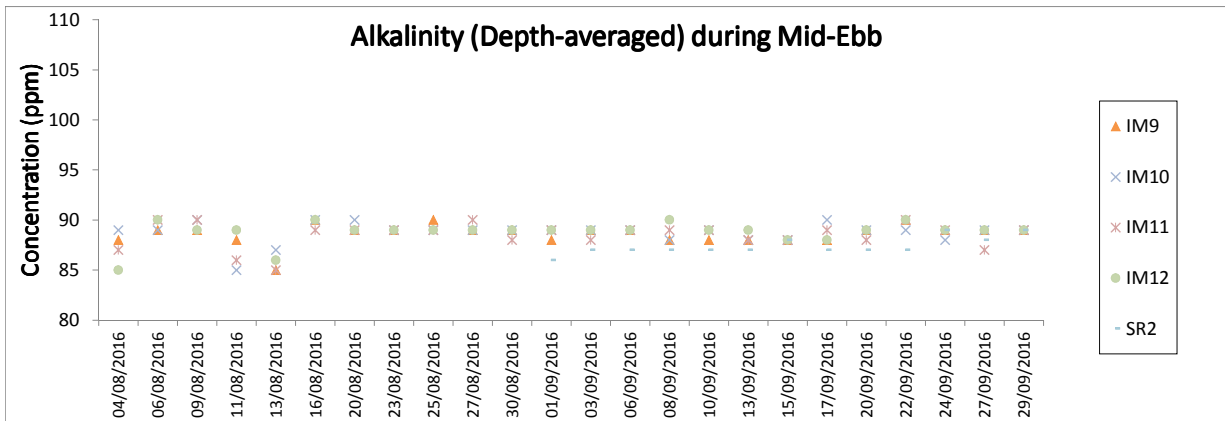
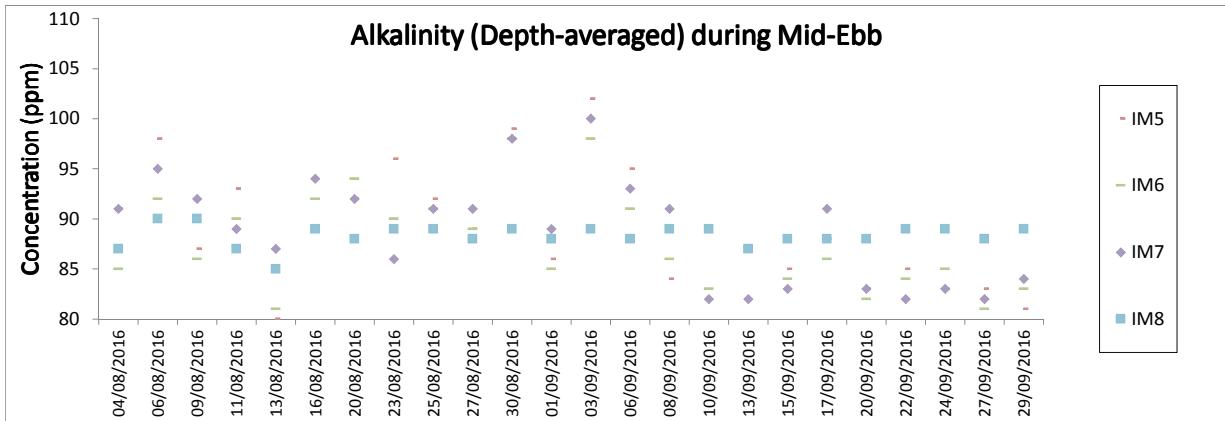
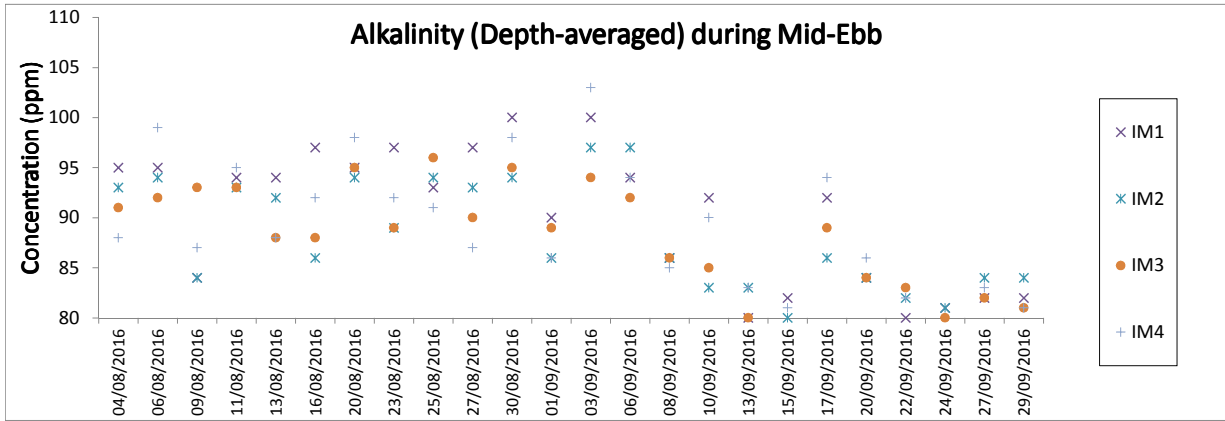
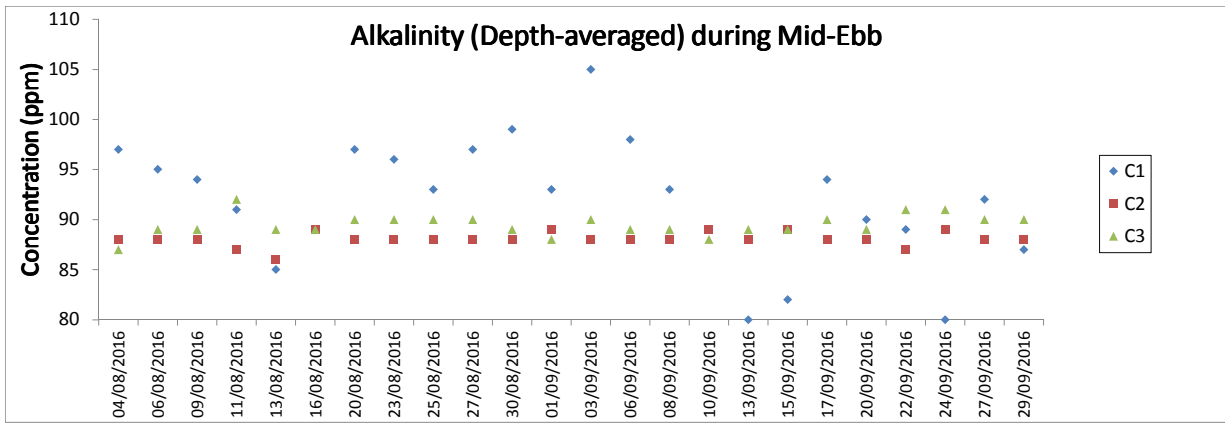
Note: The action and limit level of DO can be referred to Table 2.4 of the quarterly EM&A report.  
 The scheduled water quality monitoring on 2 August 2016 during ebb and flood tides and 18 August 2016 during ebb tide were cancelled due to adverse weather conditions.



Note: The action and limit level of turbidity can be referred to Table 2.4 of the quarterly EM&A report.  
 The scheduled water quality monitoring on 2 August 2016 during ebb and flood tides and 18 August 2016 during ebb tide were cancelled due to adverse weather conditions.

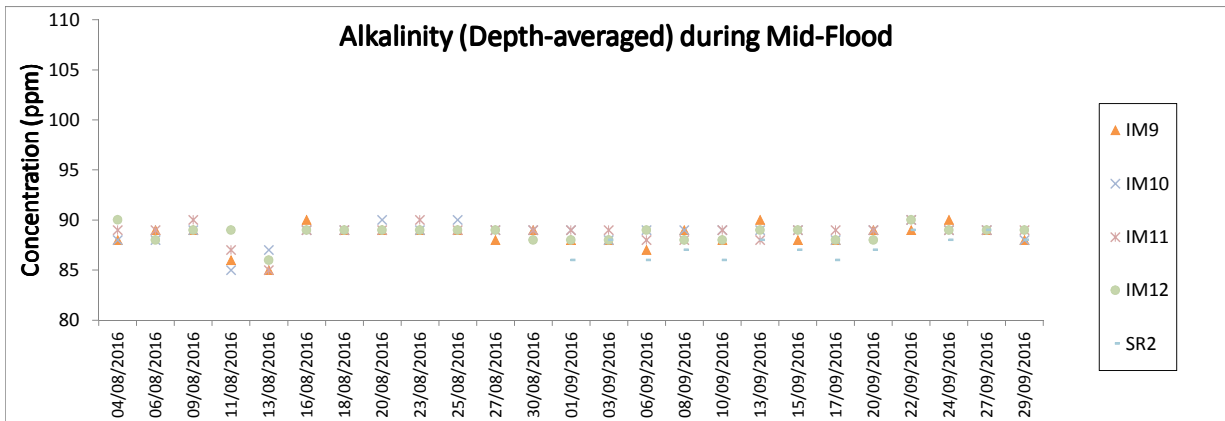
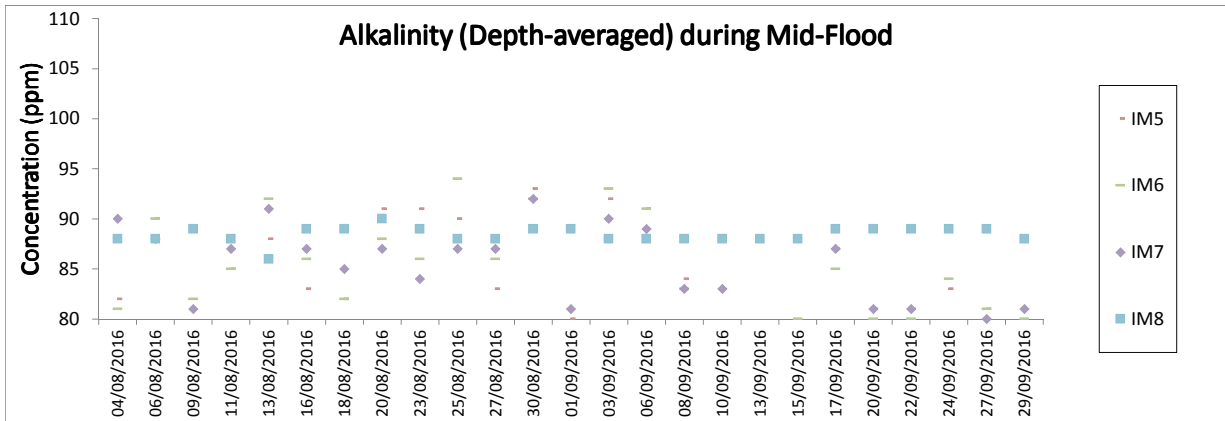
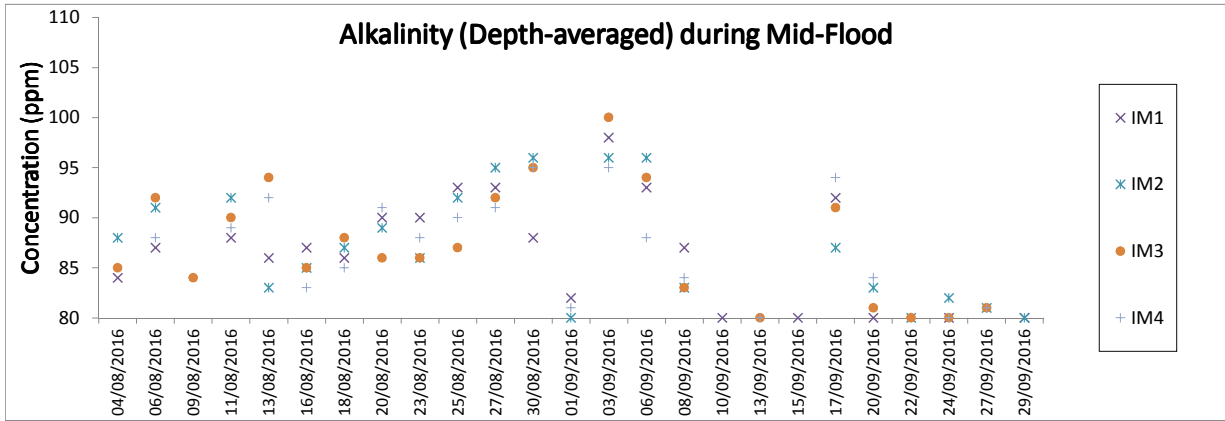
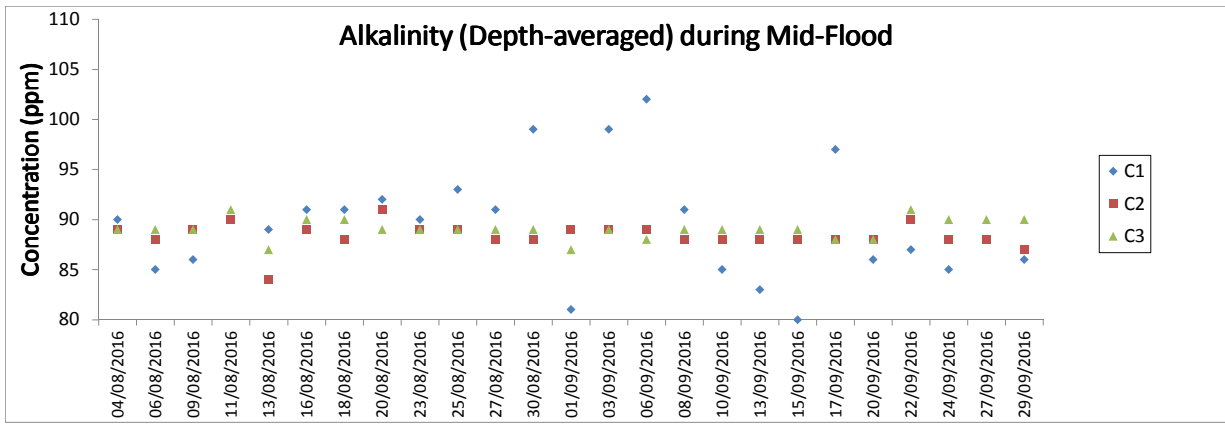


Note: The action and limit level of turbidity can be referred to Table 2.4 of the quarterly EM&A report.  
 The scheduled water quality monitoring on 2 August 2016 during ebb and flood tides and 18 August 2016 during ebb tide were cancelled due to adverse weather conditions.



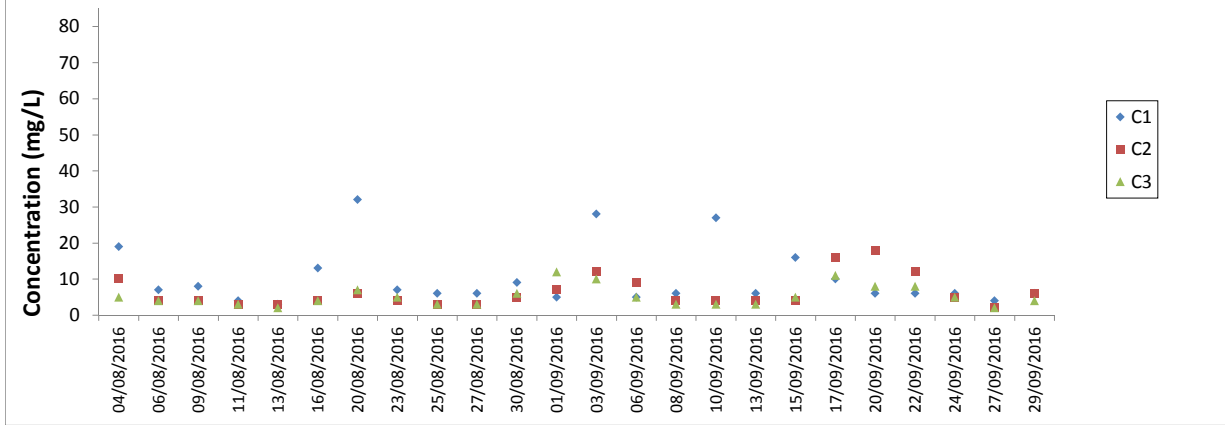
Note: The action and limit level of alkalinity can be referred to Table 2.4 of the quarterly EM&A report.  
 The scheduled water quality monitoring on 2 August 2016 during ebb and flood tides and 18 August 2016 during ebb tide were cancelled due to adverse weather conditions.



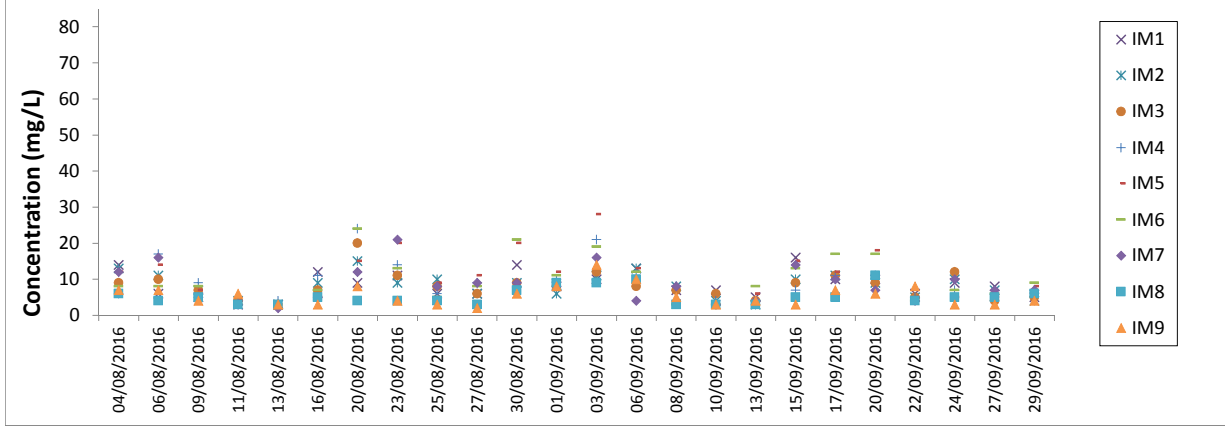


Note: The action and limit level of alkalinity can be referred to Table 2.4 of the quarterly EM&A report.  
 The scheduled water quality monitoring on 2 August 2016 during ebb and flood tides and 18 August 2016 during ebb tide were cancelled due to adverse weather conditions.

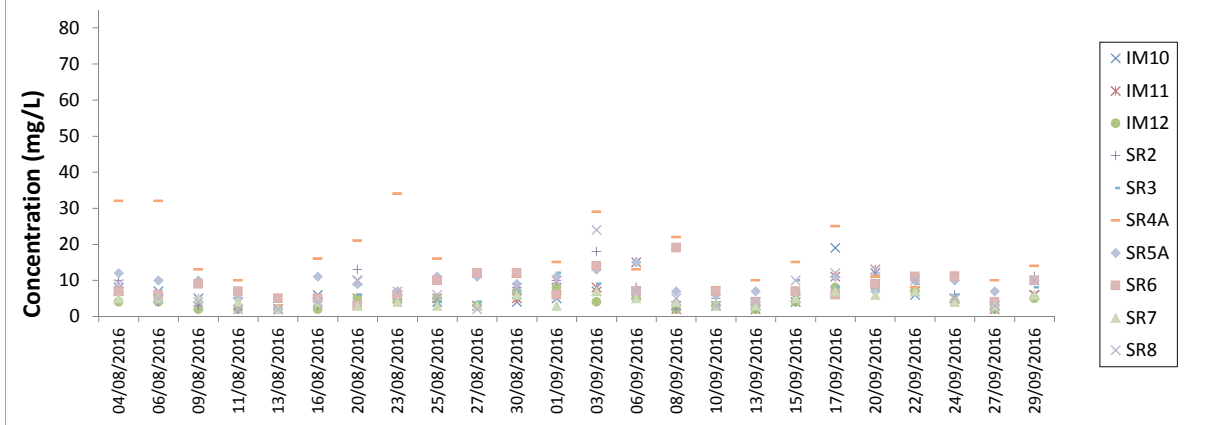
### Suspended Solids (Depth-averaged) during Mid-Ebb



### Suspended Solids (Depth-averaged) during Mid-Ebb

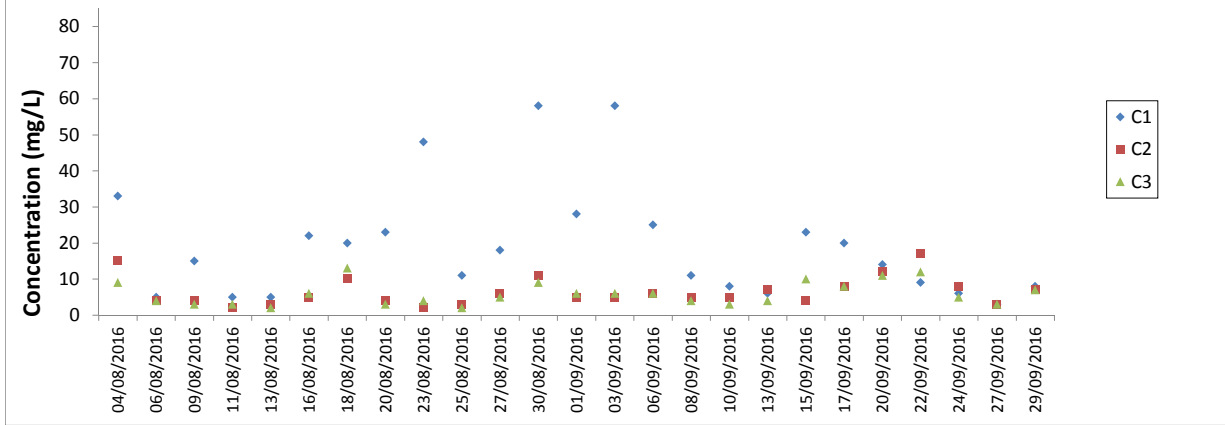


### Suspended Solids (Depth-averaged) during Mid-Ebb

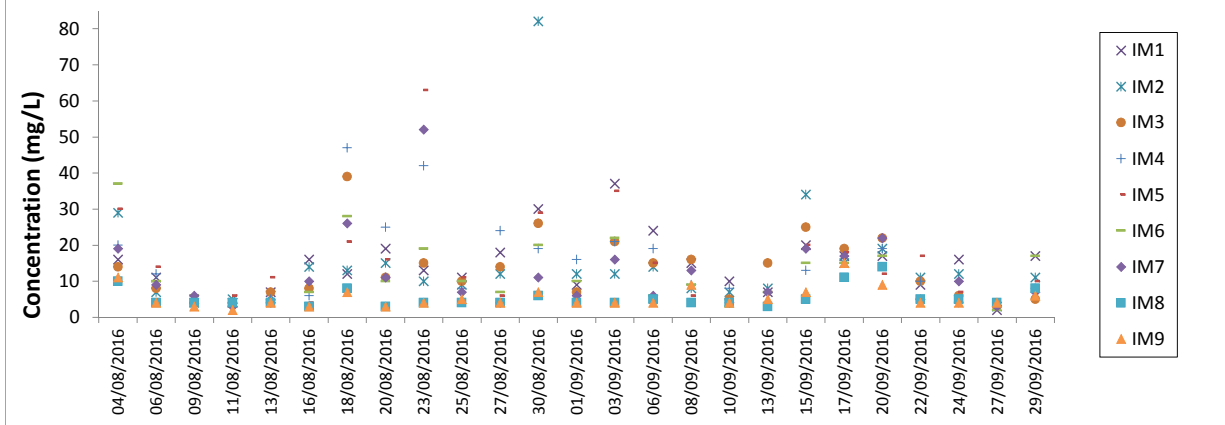


Note: The action and limit level of SS can be referred to Table 2.4 of the quarterly EM&A report.  
 The scheduled water quality monitoring on 2 August 2016 during ebb and flood tides and 18 August 2016 during ebb tide were cancelled due to adverse weather conditions.

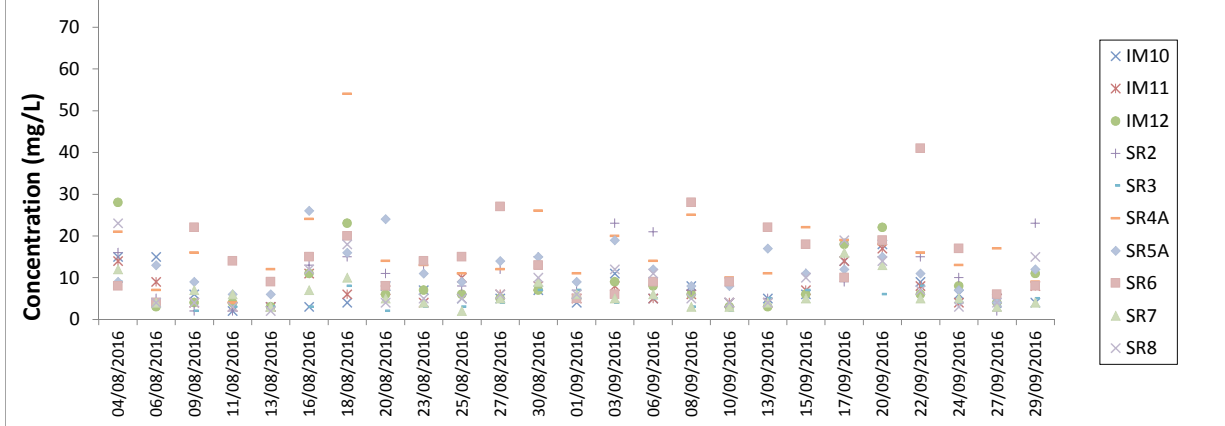
### Suspended Solids (Depth-averaged) during Mid-Flood



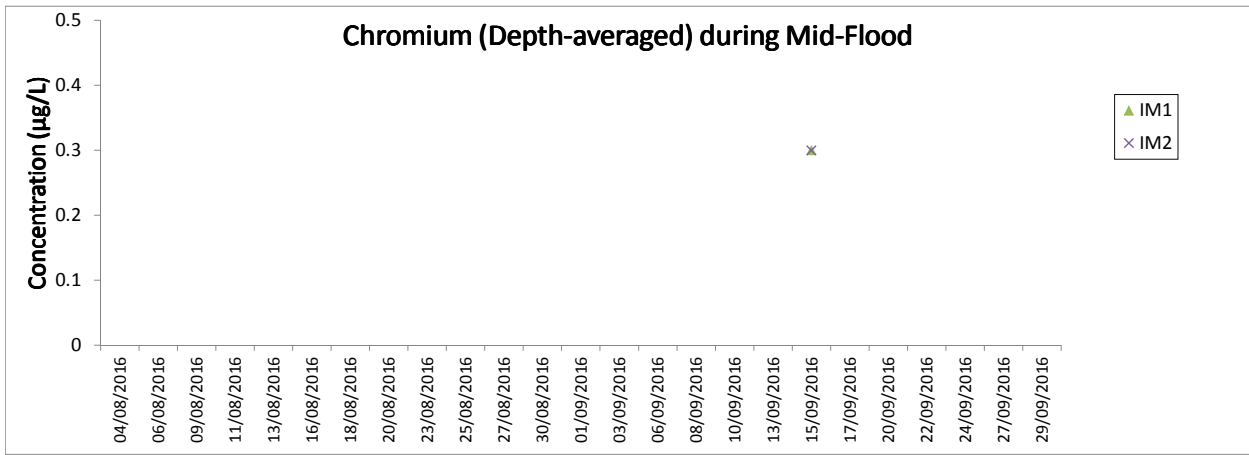
### Suspended Solids (Depth-averaged) during Mid-Flood



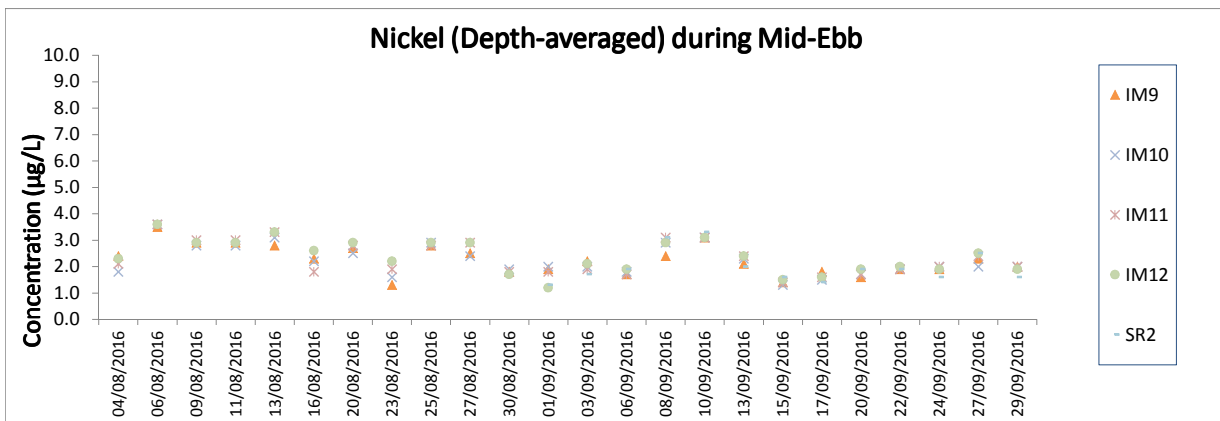
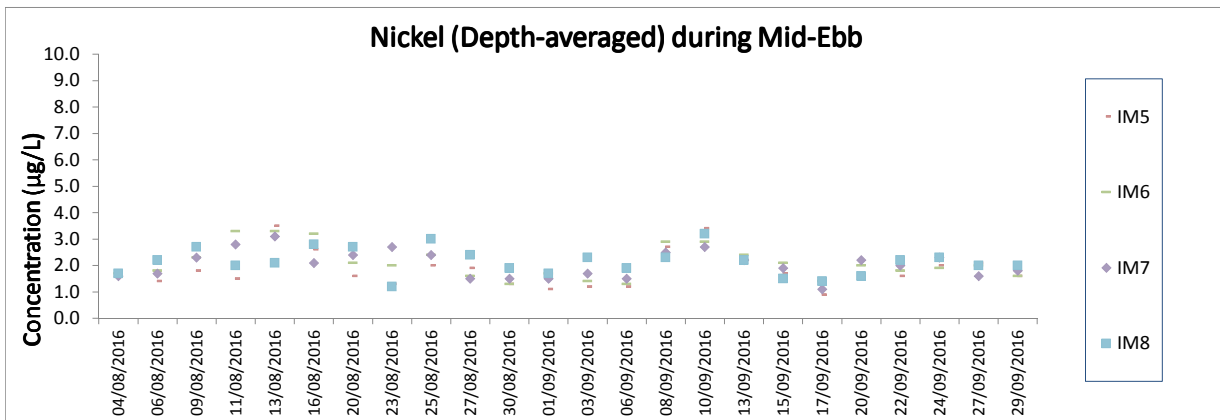
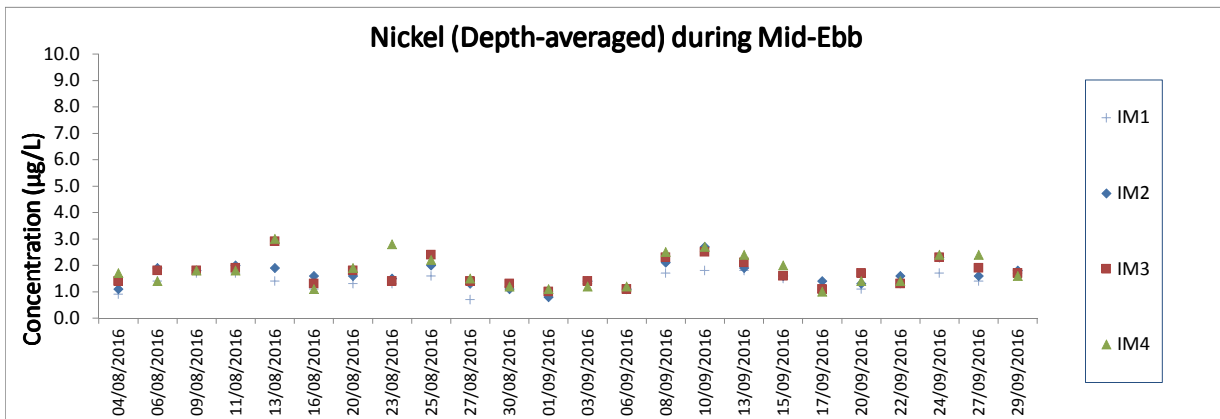
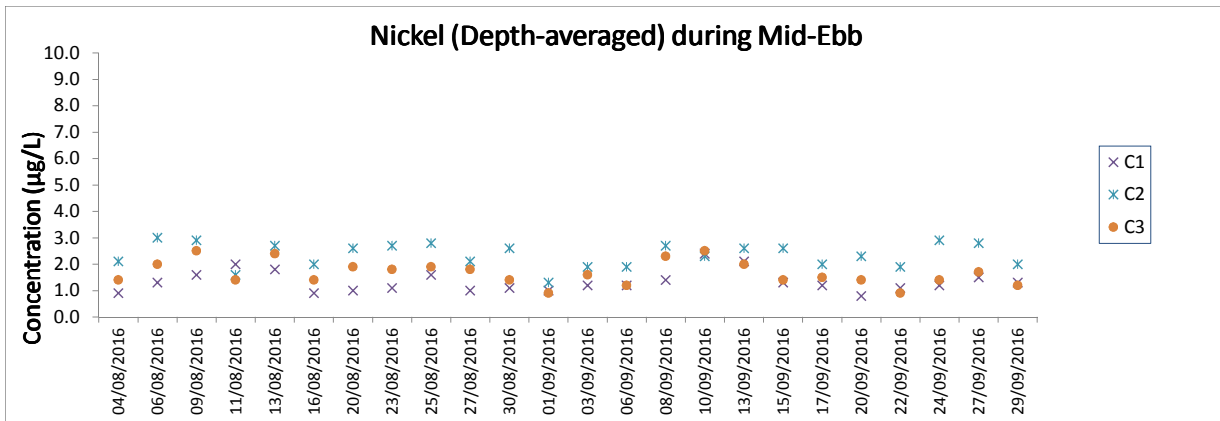
### Suspended Solids (Depth-averaged) during Mid-Flood



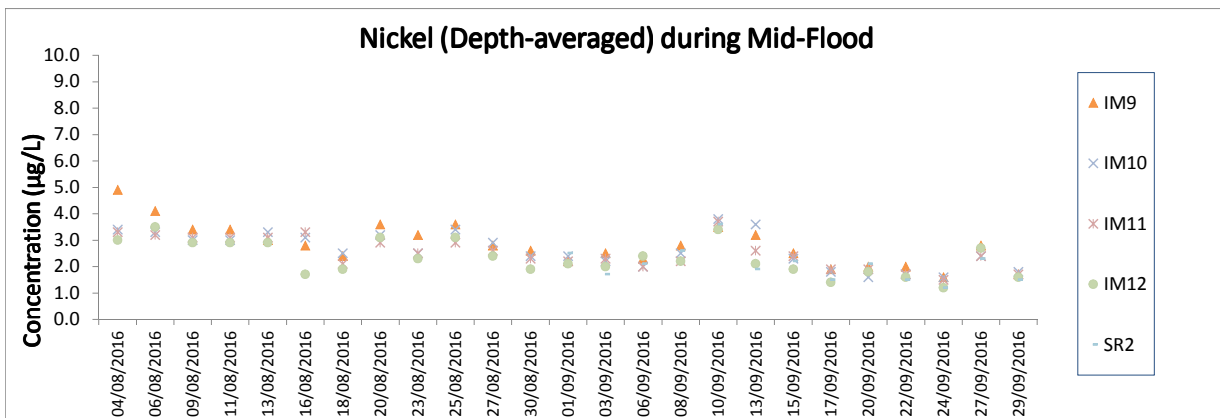
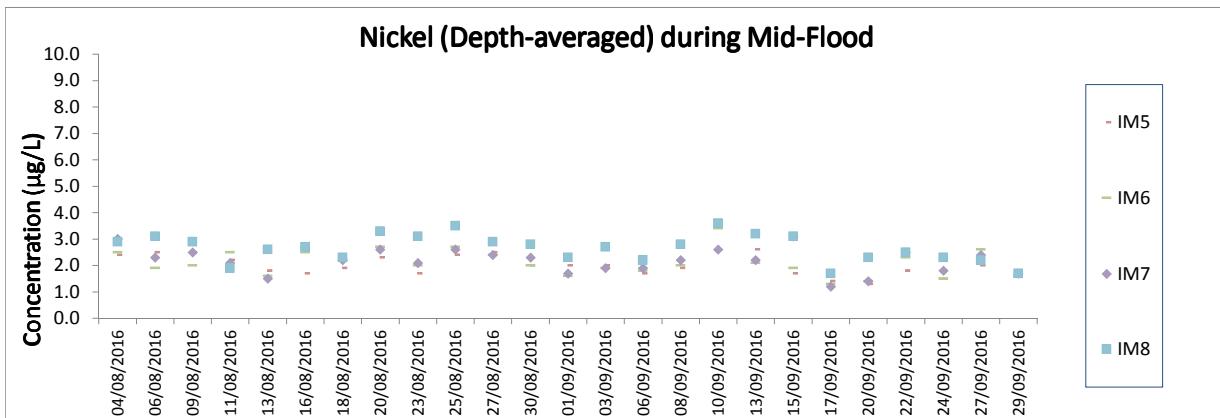
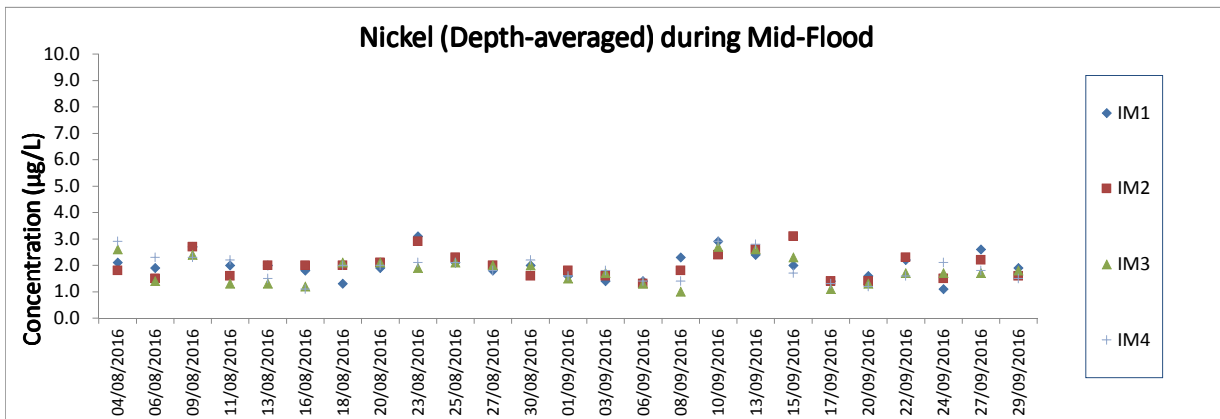
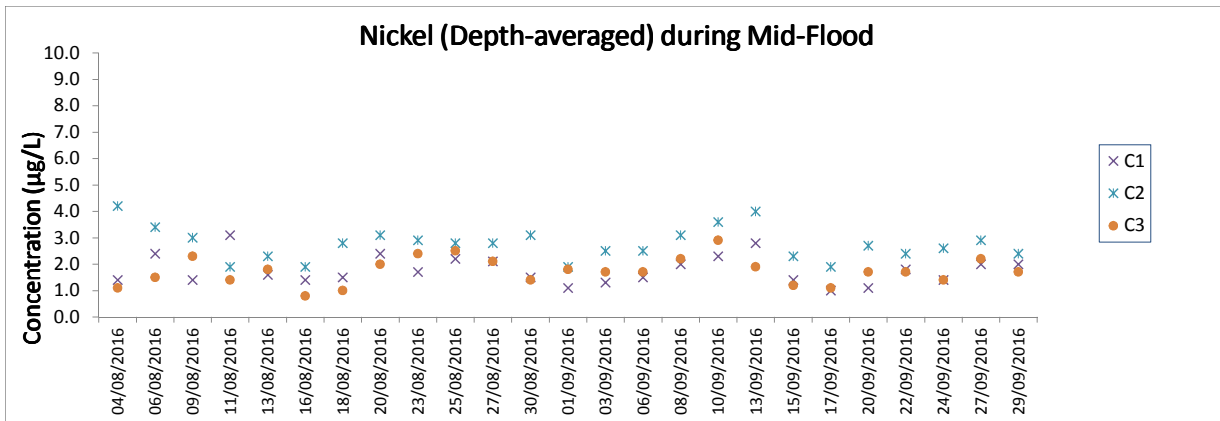
Note: The action and limit level of SS can be referred to Table 2.4 of the quarterly EM&A report.  
 The scheduled water quality monitoring on 2 August 2016 during ebb and flood tides and 18 August 2016 during ebb tide were cancelled due to adverse weather conditions.



Note: The action and limit level of Chromium can be referred to Table 2.4 of the quarterly EM&A report.  
 The monitoring results of Chromium at all other monitoring stations during mid-flood and mid-ebb tides were below the reporting limit <0.2 µg/L  
 The scheduled water quality monitoring on 2 August 2016 during ebb and flood tides and 18 August 2016 during ebb tide were cancelled due to adverse weather conditions.



Note: The action and limit level of Nickel can be referred to Table 2.4 of the quarterly EM&A report.  
 The scheduled water quality monitoring on 2 August 2016 during ebb and flood tides and 18 August 2016 during ebb tide were cancelled due to adverse weather conditions.



Note: The action and limit level of Nickel can be referred to Table 2.4 of the quarterly EM&A report.  
 The scheduled water quality monitoring on 2 August 2016 during ebb and flood tides and 18 August 2016 during ebb tide were cancelled due to adverse weather conditions.