

Appendix E. Summary of Chinese White Dolphin Monitoring Results

CWD Small Vessel Line-transect Survey

Survey Effort Data

DATE	AREA	BEAU	KM SEARCHED	SEASON	VESSEL	TYPE
4-Jul-16	NEL	2	3.40	SUMMER	32166	3RS ET
4-Jul-16	NEL	3	23.21	SUMMER	32166	3RS ET
4-Jul-16	NEL	4	19.39	SUMMER	32166	3RS ET
6-Jul-16	NEL	1	13.60	SUMMER	32166	3RS ET
6-Jul-16	NEL	2	14.68	SUMMER	32166	3RS ET
6-Jul-16	NEL	3	18.72	SUMMER	32166	3RS ET
7-Jul-16	AW	3	5.13	SUMMER	32166	3RS ET
7-Jul-16	WL	2	11.09	SUMMER	32166	3RS ET
7-Jul-16	WL	3	17.57	SUMMER	32166	3RS ET
7-Jul-16	SWL	2	5.16	SUMMER	32166	3RS ET
13-Jul-16	NWL	1	12.00	SUMMER	32166	3RS ET
13-Jul-16	NWL	2	66.80	SUMMER	32166	3RS ET
13-Jul-16	NWL	3	5.10	SUMMER	32166	3RS ET
14-Jul-16	AW	2	4.96	SUMMER	32166	3RS ET
14-Jul-16	WL	1	2.60	SUMMER	32166	3RS ET
14-Jul-16	WL	2	2.92	SUMMER	32166	3RS ET
14-Jul-16	WL	3	21.30	SUMMER	32166	3RS ET
14-Jul-16	WL	4	6.38	SUMMER	32166	3RS ET
14-Jul-16	SWL	3	7.09	SUMMER	32166	3RS ET
18-Jul-16	SWL	2	10.21	SUMMER	32166	3RS ET
18-Jul-16	SWL	3	38.54	SUMMER	32166	3RS ET
18-Jul-16	SWL	4	7.57	SUMMER	32166	3RS ET
18-Jul-16	SWL	5	2.02	SUMMER	32166	3RS ET
22-Jul-16	NWL	1	6.55	SUMMER	32166	3RS ET
22-Jul-16	NWL	2	11.58	SUMMER	32166	3RS ET
22-Jul-16	NWL	3	45.96	SUMMER	32166	3RS ET
22-Jul-16	NWL	4	13.28	SUMMER	32166	3RS ET
25-Jul-16	SWL	1	31.32	SUMMER	32166	3RS ET
25-Jul-16	SWL	2	15.35	SUMMER	32166	3RS ET
5-Aug-16	NEL	2	44.36	SUMMER	32166	3RS ET
5-Aug-16	NEL	3	2.64	SUMMER	32166	3RS ET
9-Aug-16	AW	2	4.76	SUMMER	32166	3RS ET
9-Aug-16	WL	1	8.07	SUMMER	32166	3RS ET
9-Aug-16	WL	2	16.14	SUMMER	32166	3RS ET
9-Aug-16	WL	3	3.70	SUMMER	32166	3RS ET
9-Aug-16	WL	4	1.80	SUMMER	32166	3RS ET
9-Aug-16	SWL	3	1.41	SUMMER	32166	3RS ET
9-Aug-16	SWL	4	0.77	SUMMER	32166	3RS ET
9-Aug-16	SWL	5	4.79	SUMMER	32166	3RS ET
10-Aug-16	SWL	1	14.30	SUMMER	32166	3RS ET
10-Aug-16	SWL	2	37.70	SUMMER	32166	3RS ET
10-Aug-16	SWL	3	11.10	SUMMER	32166	3RS ET
15-Aug-16	NEL	1	21.10	SUMMER	32166	3RS ET
15-Aug-16	NEL	2	26.00	SUMMER	32166	3RS ET
19-Aug-16	NWL	3	68.90	SUMMER	32166	3RS ET
19-Aug-16	NWL	4	12.60	SUMMER	32166	3RS ET
19-Aug-16	NWL	5	0.40	SUMMER	32166	3RS ET

DATE	AREA	BEAU	KM SEARCHED	SEASON	VESSEL	TYPE
22-Aug-16	AW	2	1.58	SUMMER	32166	3RS ET
22-Aug-16	AW	3	3.20	SUMMER	32166	3RS ET
22-Aug-16	WL	2	11.83	SUMMER	32166	3RS ET
22-Aug-16	WL	3	6.71	SUMMER	32166	3RS ET
22-Aug-16	WL	4	11.94	SUMMER	32166	3RS ET
22-Aug-16	SWL	3	0.83	SUMMER	32166	3RS ET
22-Aug-16	SWL	4	6.17	SUMMER	32166	3RS ET
24-Aug-16	NWL	1	34.84	SUMMER	32166	3RS ET
24-Aug-16	NWL	2	48.06	SUMMER	32166	3RS ET
25-Aug-16	SWL	1	11.89	SUMMER	32166	3RS ET
25-Aug-16	SWL	2	38.89	SUMMER	32166	3RS ET
25-Aug-16	SWL	3	12.60	SUMMER	32166	3RS ET
05-Sep-16	NEL	2	41.6	AUTUMN	32166	3RS ET
05-Sep-16	NEL	3	5.4	AUTUMN	32166	3RS ET
06-Sep-16	NWL	1	8.62	AUTUMN	32166	3RS ET
06-Sep-16	NWL	2	47.1	AUTUMN	32166	3RS ET
06-Sep-16	NWL	3	27.38	AUTUMN	32166	3RS ET
08-Sep-16	AW	2	2.65	AUTUMN	32166	3RS ET
08-Sep-16	AW	3	2.43	AUTUMN	32166	3RS ET
08-Sep-16	WL	1	5.25	AUTUMN	32166	3RS ET
08-Sep-16	WL	2	23.16	AUTUMN	32166	3RS ET
08-Sep-16	WL	3	2.67	AUTUMN	32166	3RS ET
08-Sep-16	SWL	1	2.15	AUTUMN	32166	3RS ET
08-Sep-16	SWL	2	10.15	AUTUMN	32166	3RS ET
19-Sep-16	AW	3	4.81	AUTUMN	32166	3RS ET
19-Sep-16	WL	2	5.1	AUTUMN	32166	3RS ET
19-Sep-16	WL	3	25.61	AUTUMN	32166	3RS ET
19-Sep-16	SWL	2	6.81	AUTUMN	32166	3RS ET
20-Sep-16	NEL	1	1.1	AUTUMN	32166	3RS ET
20-Sep-16	NEL	2	45.7	AUTUMN	32166	3RS ET
22-Sep-16	NWL	2	33.84	AUTUMN	32166	3RS ET
22-Sep-16	NWL	3	43.92	AUTUMN	32166	3RS ET
22-Sep-16	NWL	4	3.4	AUTUMN	32166	3RS ET
26-Sep-16	SWL	1	5.61	AUTUMN	32166	3RS ET
26-Sep-16	SWL	2	18.67	AUTUMN	32166	3RS ET
26-Sep-16	SWL	3	35.9	AUTUMN	32166	3RS ET
26-Sep-16	SWL	4	1.64	AUTUMN	32166	3RS ET
27-Sep-16	SWL	2	15.86	AUTUMN	32166	3RS ET
27-Sep-16	SWL	3	35.83	AUTUMN	32166	3RS ET
27-Sep-16	SWL	4	7.73	AUTUMN	32166	3RS ET

Notes:

CWD baseline monitoring surveys were conducted in July 2016 with two sets of transect surveys for all monitoring areas. The data collected was used to derive the running quarterly STG and ANI. These baseline survey data are presented for reference only.

CWD Small Vessel Line-transect Survey

Sighting Data

DATE	STG #	TIME	CWD/FP	GP SZ	AREA	BEAU	PSD	EFFORT	TYPE	DEC LAT	DEC LON	SEASON	BOAT ASSOC.
07-Jul-16	1	1052	CWD	1	WL	2	957	ON	3RS ET	22.2504	113.8411	SUMMER	NONE
07-Jul-16	2	1113	CWD	5	WL	3	181	ON	3RS ET	22.2415	113.8463	SUMMER	NONE
07-Jul-16	3	1144	CWD	1	WL	3	91	ON	3RS ET	22.2412	113.8364	SUMMER	NONE
07-Jul-16	4	1202	CWD	4	WL	3	318	ON	3RS ET	22.2336	113.8237	SUMMER	NONE
07-Jul-16	5	1230	CWD	3	WL	2	161	ON	3RS ET	22.2324	113.8364	SUMMER	NONE
07-Jul-16	6	1311	CWD	1	WL	2	95	ON	3RS ET	22.2140	113.8301	SUMMER	NONE
07-Jul-16	7	1318	CWD	5	WL	2	19	ON	3RS ET	22.2144	113.8330	SUMMER	NONE
07-Jul-16	8	1341	CWD	4	WL	2	55	ON	3RS ET	22.2079	113.8398	SUMMER	NONE
07-Jul-16	9	1358	CWD	1	WL	2	100	ON	3RS ET	22.2053	113.8350	SUMMER	NONE
07-Jul-16	10	1423	CWD	1	WL	3	57	ON	3RS ET	22.1962	113.8314	SUMMER	NONE
07-Jul-16	11	1438	CWD	7	WL	3	265	ON	3RS ET	22.1959	113.8426	SUMMER	NONE
07-Jul-16	12	1535	CWD	1	SWL	2	555	ON	3RS ET	22.1825	113.8498	SUMMER	NONE
07-Jul-16	13	1601	CWD	4	SWL	2	151	ON	3RS ET	22.1909	113.8590	SUMMER	PURSE SEINE
14-Jul-16	1	1101	CWD	2	WL	4	N/A	OFF	3RS ET	22.2413	113.8425	SUMMER	NONE
14-Jul-16	2	1235	CWD	3	WL	4	186	ON	3RS ET	22.1873	113.8306	SUMMER	NONE
14-Jul-16	3	1316	CWD	1	SWL	3	N/A	OFF	3RS ET	22.1812	113.8589	SUMMER	NONE
18-Jul-16	1	1145	CWD	8	SWL	2	269	ON	3RS ET	22.1974	113.9184	SUMMER	NONE
18-Jul-16	2	1312	CWD	2	SWL	3	77	ON	3RS ET	22.1657	113.9027	SUMMER	NONE
18-Jul-16	3	1355	CWD	14	SWL	2	N/A	OFF	3RS ET	22.1988	113.8971	SUMMER	PURSE SEINE
18-Jul-16	4	1425	CWD	6	SWL	3	572	ON	3RS ET	22.1894	113.8982	SUMMER	NONE
18-Jul-16	5	1528	CWD	2	SWL	3	653	ON	3RS ET	22.2018	113.8877	SUMMER	NONE
22-Jul-16	1	0959	CWD	3	NWL	1	118	ON	3RS ET	22.3686	113.8683	SUMMER	NONE
22-Jul-16	2	1053	CWD	3	NWL	1	47	ON	3RS ET	22.3086	113.8689	SUMMER	NONE
22-Jul-16	3	1142	CWD	5	NWL	3	151	ON	3RS ET	22.2722	113.8725	SUMMER	NONE
22-Jul-16	4	1244	CWD	2	NWL	3	65	ON	3RS ET	22.3378	113.8782	SUMMER	NONE
22-Jul-16	5	1342	CWD	7	NWL	4	15	ON	3RS ET	22.3939	113.8726	SUMMER	NONE
25-Jul-16	1	1057	FP	6	SWL	1	73	ON	3RS ET	22.1659	113.9363	SUMMER	NONE
25-Jul-16	2	1109	FP	3	SWL	1	19	ON	3RS ET	22.1597	113.9357	SUMMER	NONE
25-Jul-16	3	1128	FP	1	SWL	1	72	ON	3RS ET	22.1460	113.9272	SUMMER	NONE
25-Jul-16	4	1137	FP	3	SWL	1	132	ON	3RS ET	22.1540	113.9273	SUMMER	NONE
25-Jul-16	5	1149	FP	3	SWL	1	255	ON	3RS ET	22.1686	113.9274	SUMMER	NONE

DATE	STG #	TIME	CWD/FP	GP SZ	AREA	BEAU	PSD	EFFORT	TYPE	DEC LAT	DEC LON	SEASON	BOAT ASSOC.
25-Jul-16	6	1347	CWD	8	SWL	2	644	ON	3RS ET	22.1845	113.8977	SUMMER	NONE
25-Jul-16	7	1441	CWD	6	SWL	1	1247	ON	3RS ET	22.2029	113.8783	SUMMER	NONE
25-Jul-16	8	1531	CWD	24	SWL	2	908	ON	3RS ET	22.1605	113.8705	SUMMER	NONE
09-Aug-16	1	1037	CWD	2	WL	1	8	ON	3RS ET	22.2625	113.8563	SUMMER	NONE
09-Aug-16	2	1047	CWD	1	WL	2	85	ON	3RS ET	22.2609	113.8515	SUMMER	NONE
09-Aug-16	3	1114	CWD	5	WL	2	98	ON	3RS ET	22.2504	113.8413	SUMMER	NONE
09-Aug-16	4	1146	CWD	3	WL	2	5	ON	3RS ET	22.2394	113.8278	SUMMER	NONE
09-Aug-16	5	1325	CWD	1	SWL	4	N/A	OFF	3RS ET	22.1936	113.8473	SUMMER	NONE
10-Aug-16	1	1059	FP	1	SWL	2	130	ON	3RS ET	22.1715	113.9353	SUMMER	NONE
10-Aug-16	2	1107	FP	6	SWL	2	396	ON	3RS ET	22.1624	113.9359	SUMMER	NONE
10-Aug-16	3	1116	FP	5	SWL	2	256	ON	3RS ET	22.1524	113.9356	SUMMER	NONE
19-Aug-16	1	1201	CWD	5	NWL	3	56	ON	3RS ET	22.3869	113.8890	SUMMER	NONE
19-Aug-16	2	1358	CWD	7	NWL	3	59	ON	3RS ET	22.3749	113.9066	SUMMER	NONE
22-Aug-16	1	0950	CWD	2	WL	2	N/A	OFF	3RS ET	22.3003	113.8665	SUMMER	NONE
22-Aug-16	2	1001	CWD	5	WL	3	197	ON	3RS ET	22.3023	113.8616	SUMMER	NONE
22-Aug-16	3	1046	CWD	5	WL	2	47	ON	3RS ET	22.2661	113.8592	SUMMER	NONE
22-Aug-16	4	1116	CWD	1	WL	2	213	ON	3RS ET	22.2503	113.8345	SUMMER	NONE
22-Aug-16	5	1145	CWD	1	WL	2	390	ON	3RS ET	22.2414	113.8408	SUMMER	NONE
22-Aug-16	6	1209	CWD	5	WL	2	183	ON	3RS ET	22.2367	113.8265	SUMMER	NONE
22-Aug-16	7	1237	CWD	7	WL	2	124	ON	3RS ET	22.2236	113.8369	SUMMER	NONE
22-Aug-16	8	1318	CWD	4	WL	4	245	ON	3RS ET	22.2143	113.8209	SUMMER	NONE
24-Aug-16	1	1216	CWD	6	NWL	1	32	ON	3RS ET	22.3785	113.8888	SUMMER	NONE
24-Aug-16	2	1336	CWD	1	NWL	2	27	ON	3RS ET	22.3797	113.8976	SUMMER	NONE
25-Aug-16	1	1013	CWD	1	SWL	2	N/A	OFF	3RS ET	22.1997	113.8684	SUMMER	NONE
25-Aug-16	2	1142	CWD	7	SWL	1	1303	ON	3RS ET	22.1498	113.8887	SUMMER	NONE
06-Sep-16	1	1127	CWD	3	NWL	3	48	ON	3RS ET	22.3379	113.8784	AUTUMN	NONE
08-Sep-16	1	1020	CWD	4	WL	1	221	ON	3RS ET	22.2504	113.8387	AUTUMN	PURSE SEINE
08-Sep-16	2	1044	CWD	9	WL	1	36	ON	3RS ET	22.2416	113.8409	AUTUMN	NONE
08-Sep-16	3	1233	CWD	2	WL	2	100	ON	3RS ET	22.1871	113.8365	AUTUMN	NONE
19-Sep-16	1	945	CWD	2	AW	3	13	ON	3RS ET	22.3009	113.8895	AUTUMN	NONE
19-Sep-16	2	1147	CWD	10	WL	3	27	ON	3RS ET	22.2319	113.8282	AUTUMN	NONE
19-Sep-16	3	1230	CWD	1	WL	3	135	ON	3RS ET	22.2138	113.8202	AUTUMN	NONE
19-Sep-16	4	1244	CWD	8	WL	3	25	ON	3RS ET	22.2142	113.8331	AUTUMN	NONE

DATE	STG #	TIME	CWD/FP	GP SZ	AREA	BEAU	PSD	EFFORT	TYPE	DEC LAT	DEC LON	SEASON	BOAT ASSOC.
19-Sep-16	5	1334	CWD	5	WL	3	149	ON	3RS ET	22.1963	113.8397	AUTUMN	NONE
19-Sep-16	6	1411	CWD	1	SWL	2	124	ON	3RS ET	22.191	113.8508	AUTUMN	NONE
19-Sep-16	7	1427	CWD	5	SWL	2	N/A	OFF	3RS ET	22.1838	113.8499	AUTUMN	NONE
19-Sep-16	8	1506	CWD	1	SWL	2	N/A	OFF	3RS ET	22.1942	113.8543	AUTUMN	PURSE SEINE
22-Sep-16	1	1007	CWD	6	NWL	2	238	ON	3RS ET	22.3373	113.8684	AUTUMN	NONE
22-Sep-16	2	1315	CWD	7	NWL	3	153	ON	3RS ET	22.3636	113.8981	AUTUMN	NONE
26-Sep-16	1	1109	FP	5	SWL	2	347	ON	3RS ET	22.1688	113.928	AUTUMN	NONE
26-Sep-16	2	1157	FP	2	SWL	3	308	ON	3RS ET	22.1728	113.9195	AUTUMN	NONE
26-Sep-16	3	1456	CWD	5	SWL	2	15	ON	3RS ET	22.1997	113.869	AUTUMN	NONE
27-Sep-16	1	1100	FP	2	SWL	3	48	ON	3RS ET	22.1627	113.936	AUTUMN	NONE
27-Sep-16	2	1130	FP	1	SWL	3	34	ON	3RS ET	22.1723	113.928	AUTUMN	NONE
27-Sep-16	3	1214	FP	4	SWL	3	62	ON	3RS ET	22.1601	113.9179	AUTUMN	NONE
27-Sep-16	4	1309	CWD	1	SWL	2	204	ON	3RS ET	22.2024	113.9078	AUTUMN	NONE
27-Sep-16	5	1412	CWD	2	SWL	2	182	ON	3RS ET	22.1851	113.8879	AUTUMN	NONE
27-Sep-16	6	1434	CWD	1	SWL	3	64	ON	3RS ET	22.2062	113.8874	AUTUMN	NONE







Abbreviations: STG# = Sighting Number; GP SZ = Dolphin Group Size; BEAU = Beaufort Sea State; PSD = Perpendicular Distance (in metres); N/A = Not Applicable; DEC LAT = Latitude (WGS84 in Decimal), DEC LON = Longitude (WGS84 in Decimal); BOAT ASSOC. = Fishing Boat Association









Notes:

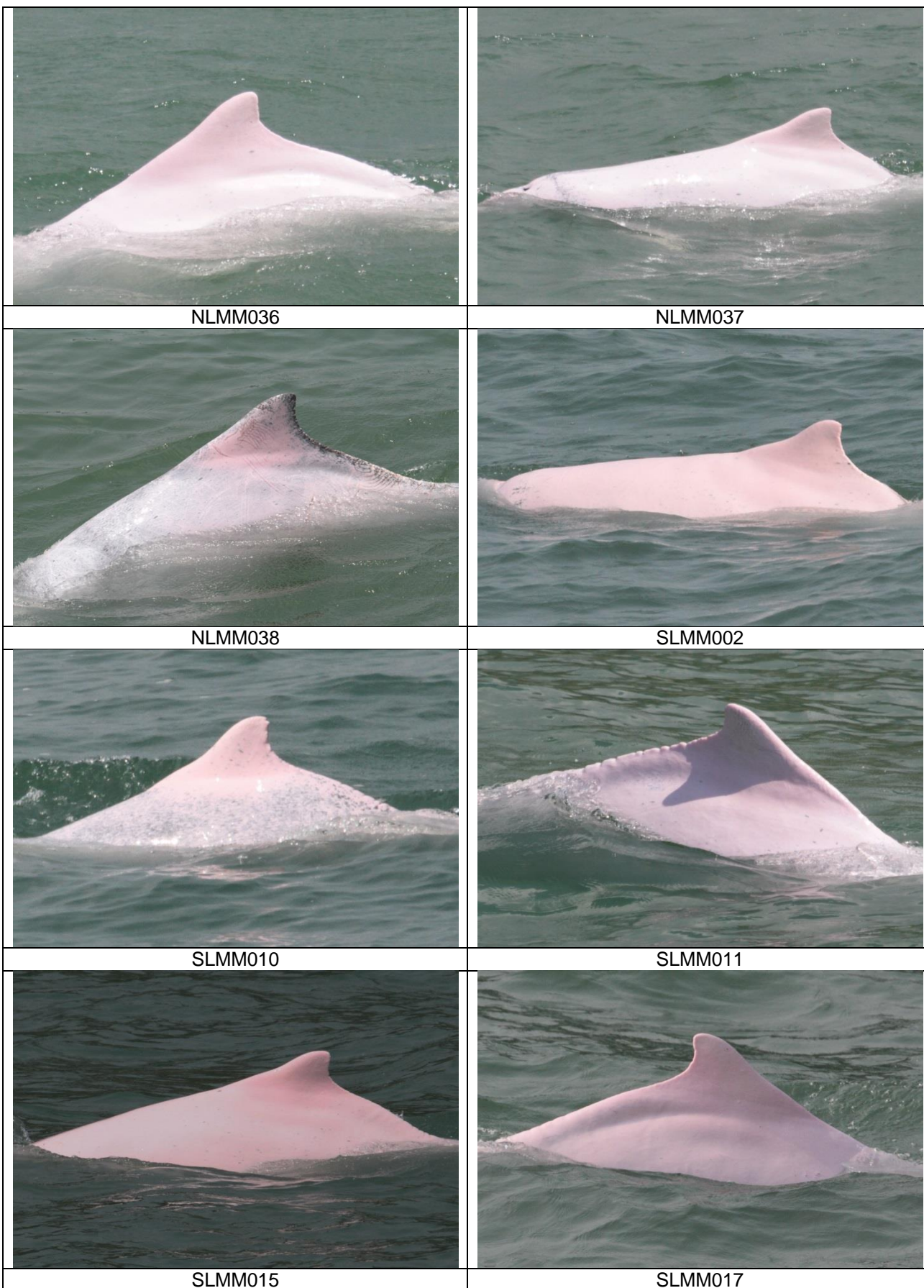
CWD baseline monitoring surveys were conducted in July 2016 with two sets of transect surveys for all monitoring areas. The data collected was used to derive the running quarterly STG and ANI. These baseline survey data are presented for reference only.

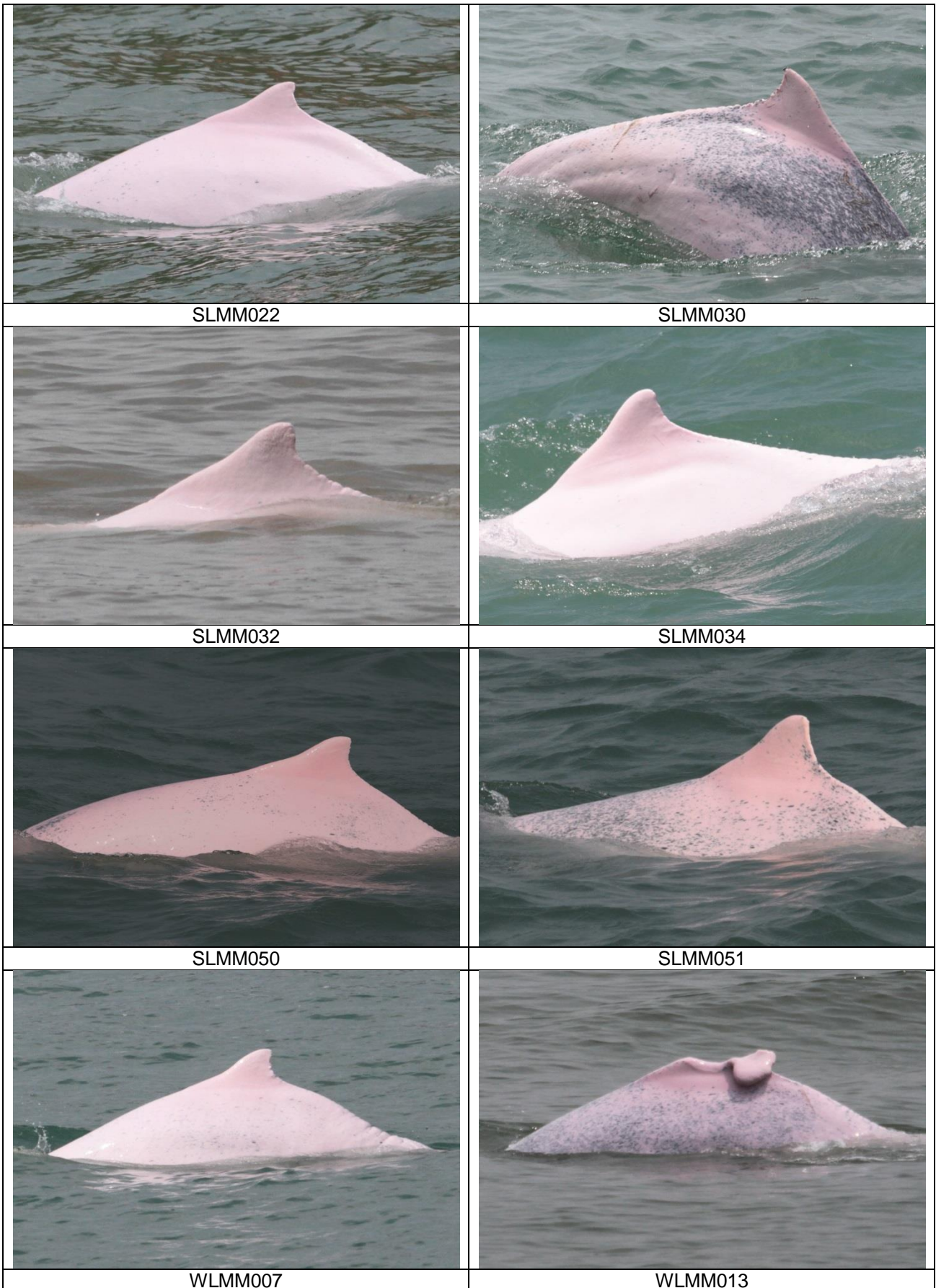
CWD Small Vessel Line-transect Survey

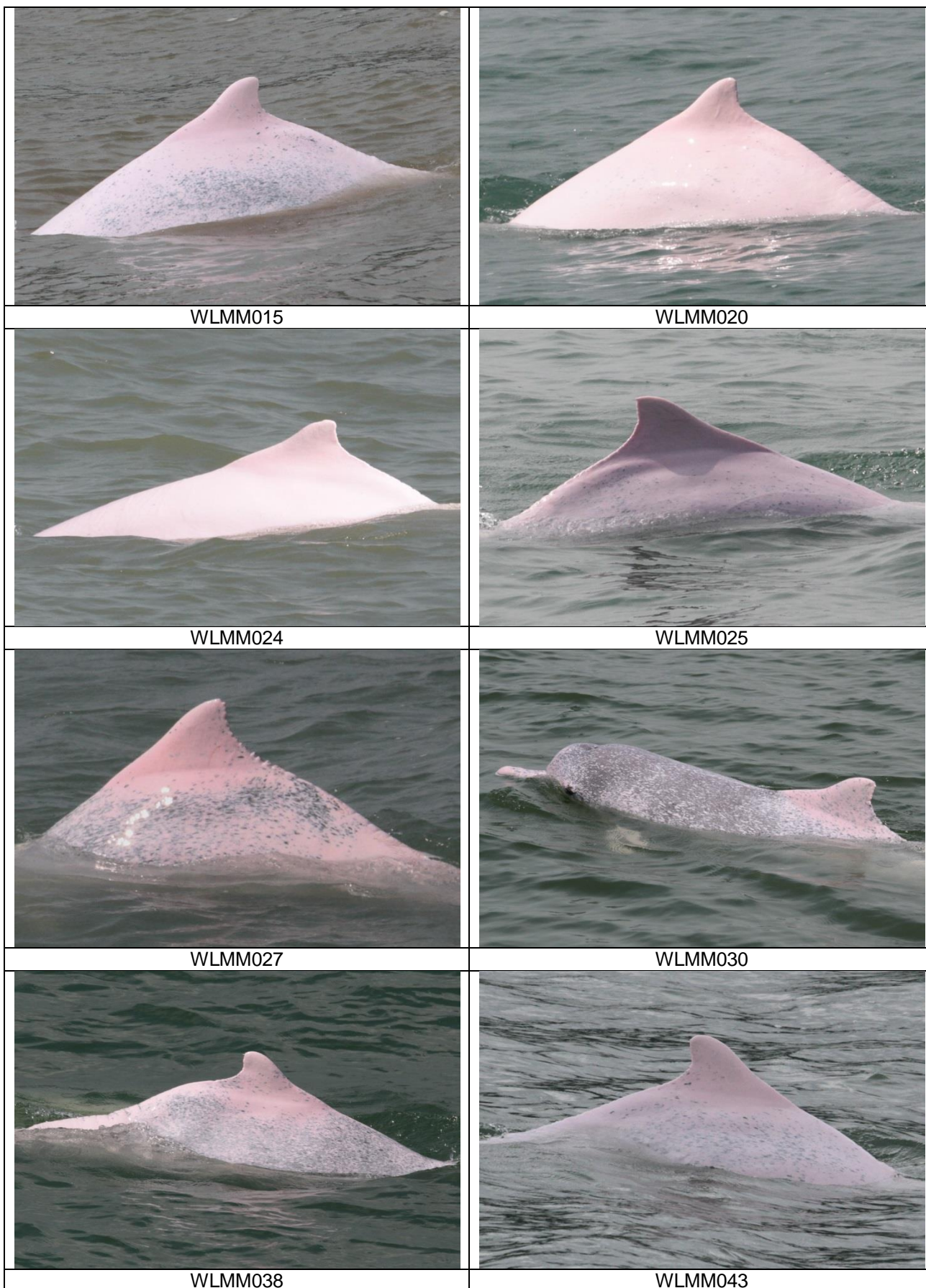
Photo Identification

	
NLMM002	NLMM004
	
NLMM005	NLMM006
	
NLMM008	NLMM010

	
NLMM012	NLMM013
	
NLMM017	NLMM019
	
NLMM021	NLMM027
	
NLMM028	NLMM035







WLMM015

WLMM020

WLMM024

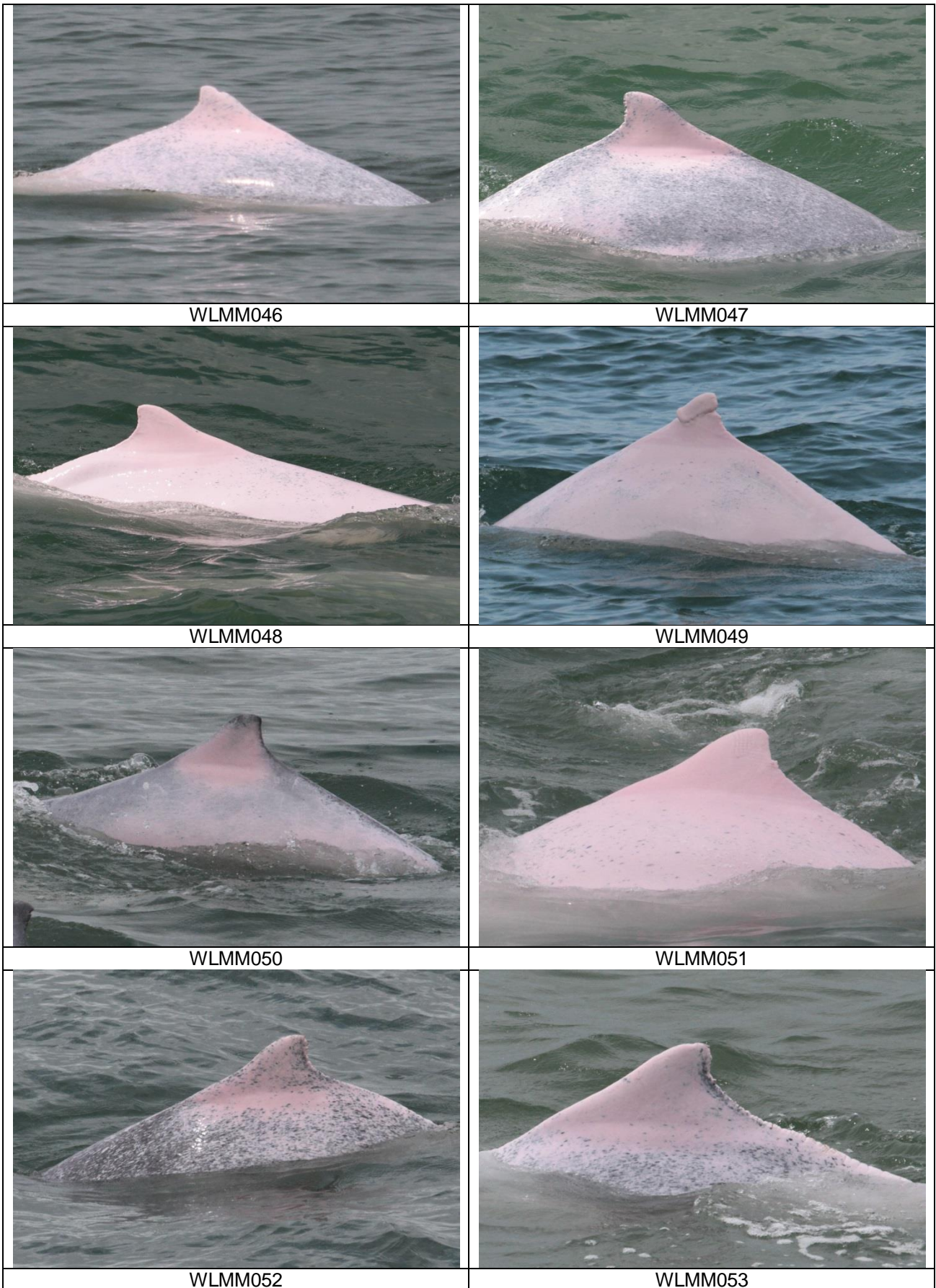
WLMM025

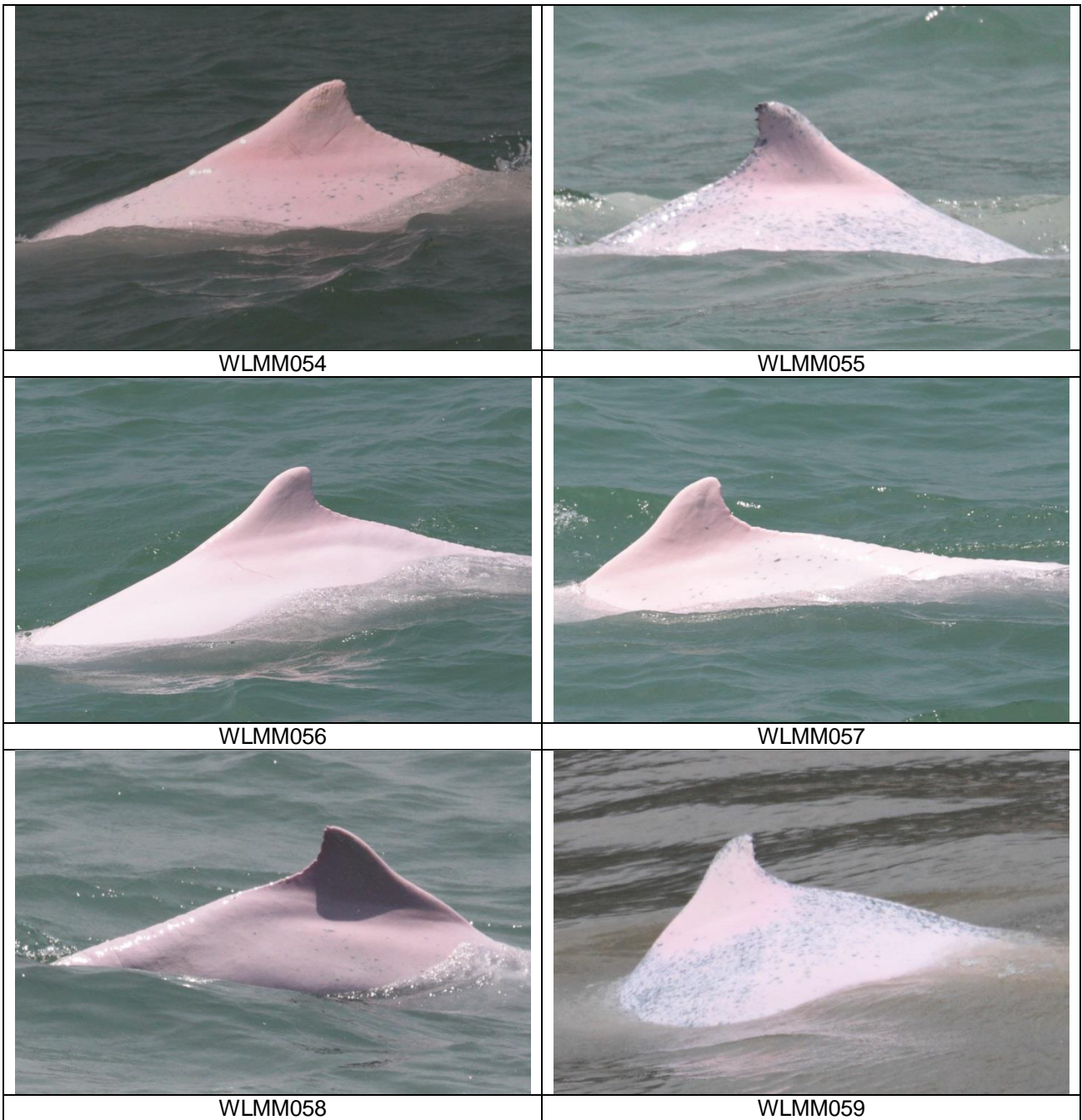
WLMM027

WLMM030

WLMM038

WLMM043





CWD Land-based Theodolite Tracking

CWD Groups by Survey Date

Date	Station	Start Time	End Time	Duration	Beaufort Range	Visibility	No. of Focal Follow Dolphin Groups Tracked	Dolphin Group Size Range
1-Aug-16	Sha Chau	8:29	13:09	4:40	1	3-4	0	N/A
5-Aug-16	Lung Kwu Chau	8:35	14:45	6:10	2	3	8	2-6
9-Aug-16	Sha Chau	8:30	16:00	7:30	1-4	2-3	1	1
11-Aug-16	Lung Kwu Chau	8:49	14:50	6:01	2-3	2-4	3	2-3
23-Aug-16	Lung Kwu Chau	8:37	14:37	6:00	1	2-3	0	N/A
1-Sep-16	Lung Kwu Chau	9:42	14:52	5:10	1-2	2-3	1	4
7-Sep-16	Lung Kwu Chau	9:19	15:09	5:50	1-3	2-3	7	2-4
13-Sep-16	Sha Chau	8:43	14:43	6:00	2	2	0	N/A
23-Sep-16	Sha Chau	8:40	14:40	6:00	2-3	2	0	N/A
26-Sep-16	Lung Kwu Chau	9:02	16:02	7:00	2-3	3	1	2

Visibility: 1=Excellent, 2=Good, 3=Fair, 4=Poor