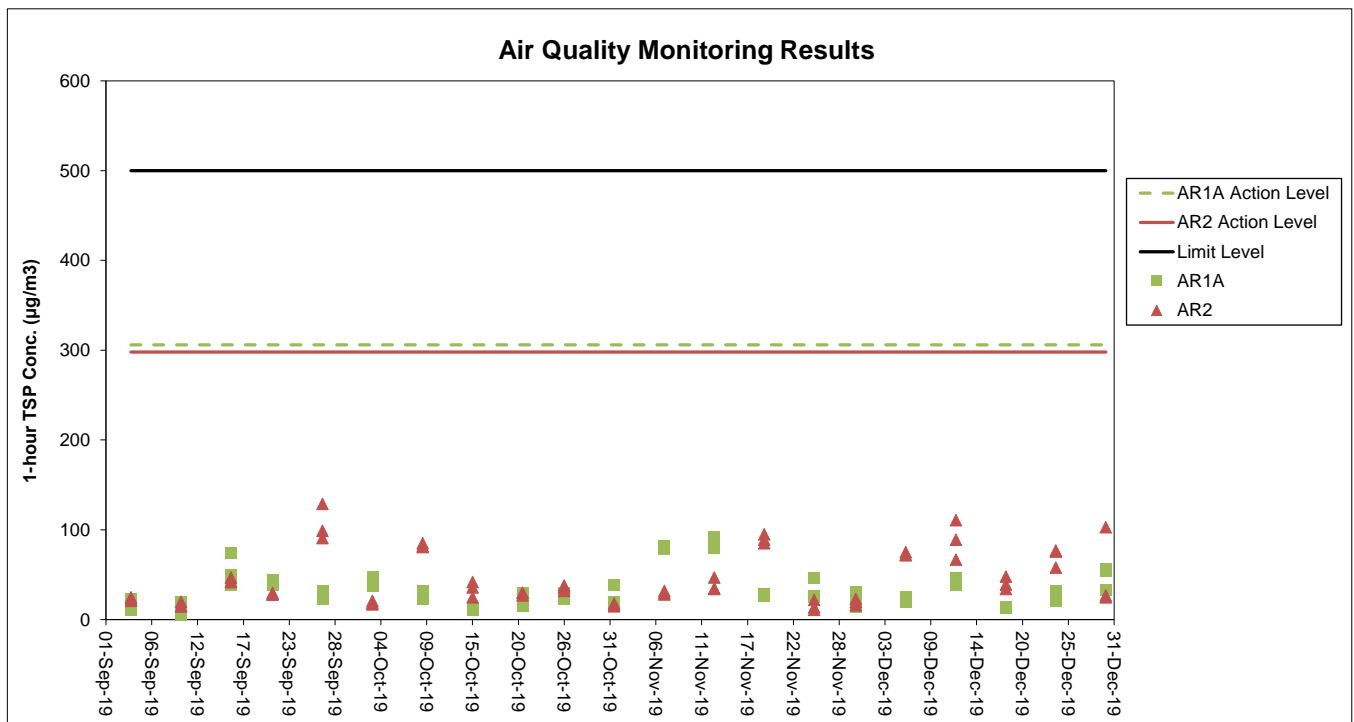


# Appendix C. Monitoring Results

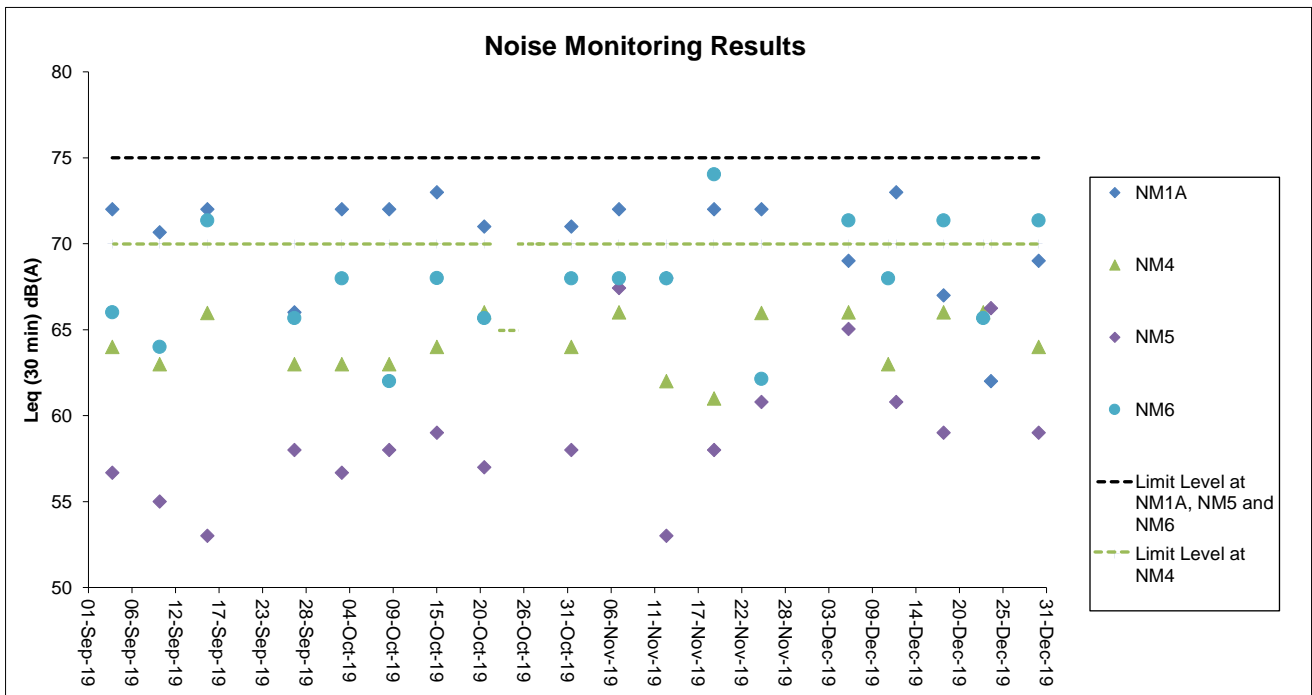
# **Air Quality Monitoring Results**



**Notes:**

1. The key activities of the Project during monitoring included reclamation works and land-side works. Reclamation works included deep cement mixing (DCM) works, marine filling, and seawall construction. Land-side works involved mainly foundation and substructure work for Terminal 2 expansion, modification and tunnel work for Automated People Mover (APM) and Baggage Handling System (BHS), and preparation work for utilities.
2. General weather condition during monitoring ranged from sunny to drizzle. Detailed meteorological conditions can be referred to Table 2.3 of this Report and corresponding Monthly EM&A Reports.
3. QA/ QC requirements as stipulated in the EM&A Manual were carried out during measurement.

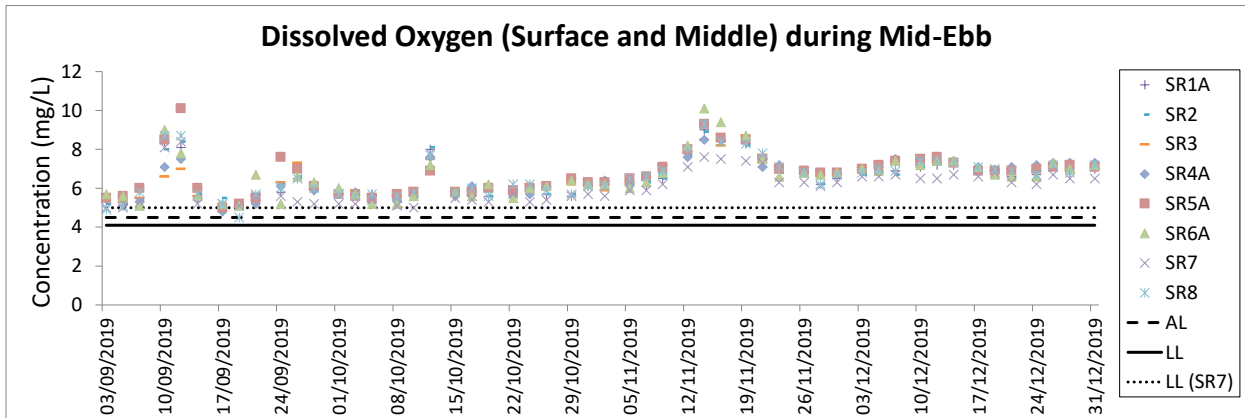
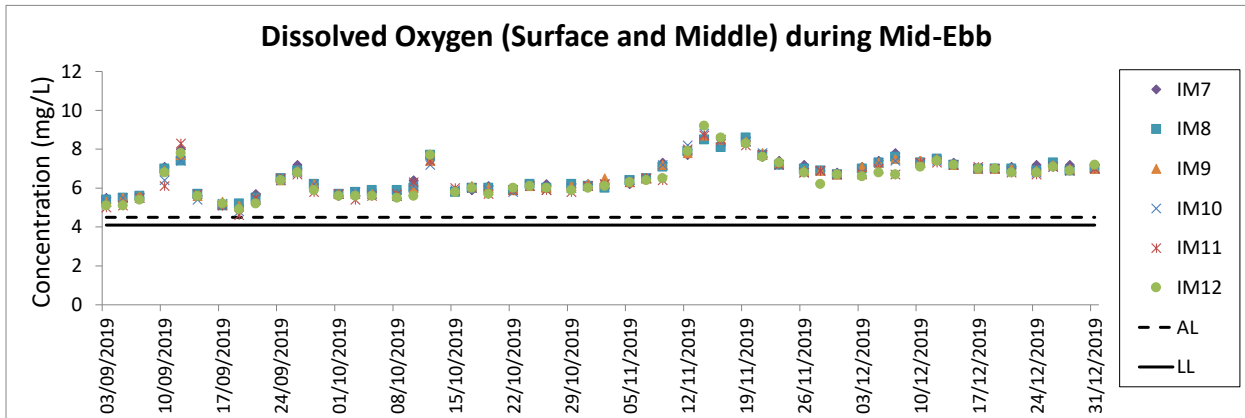
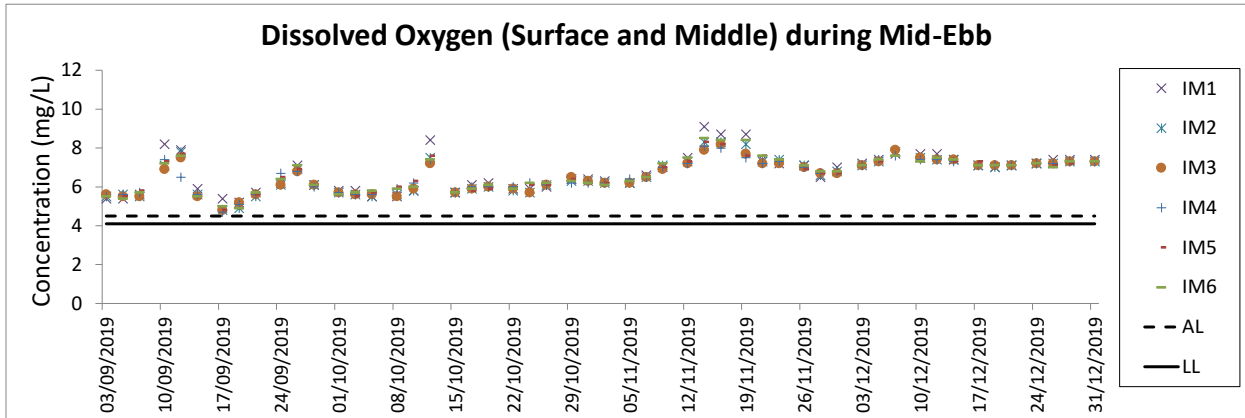
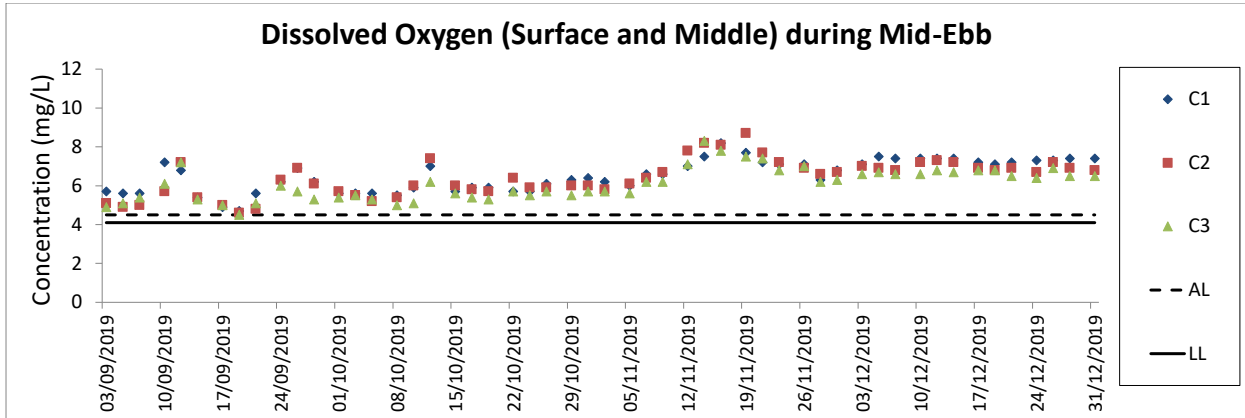
# Noise Monitoring Results



**Notes:**

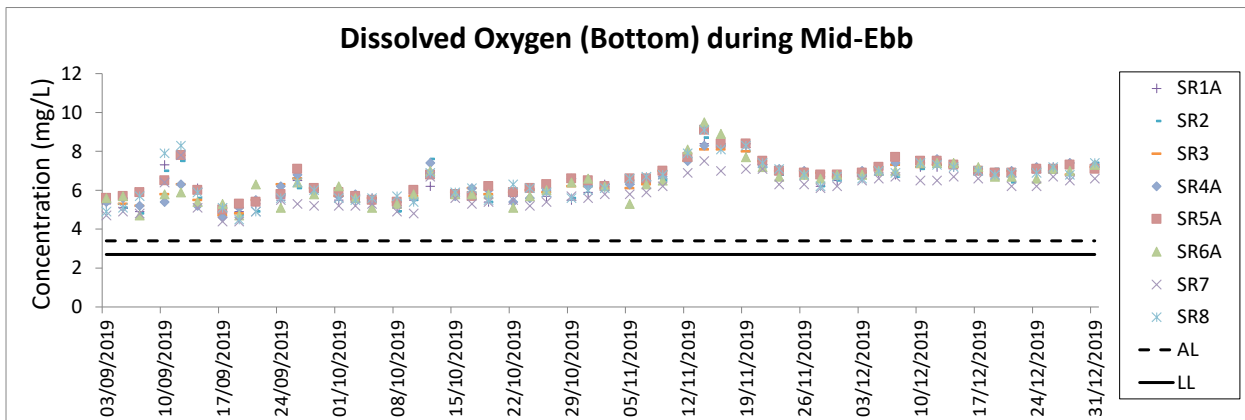
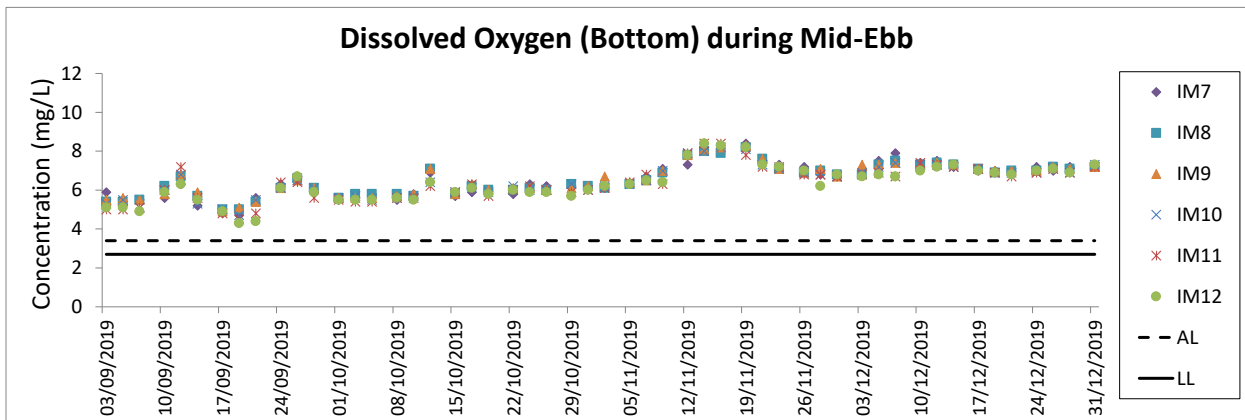
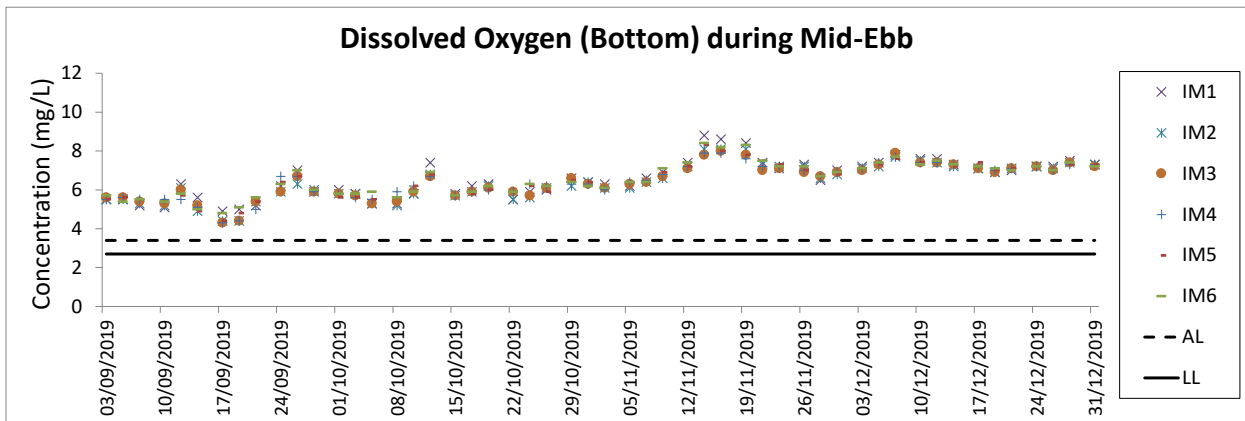
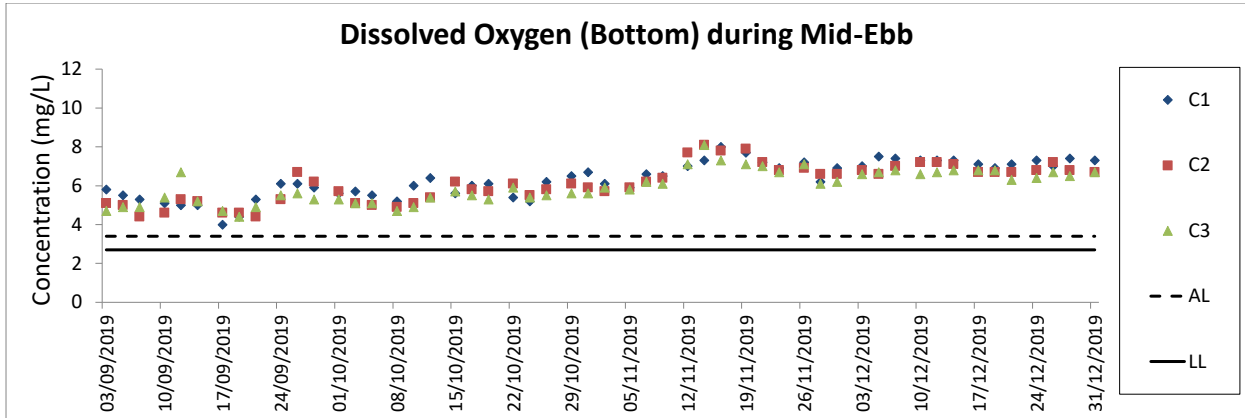
1. Limit Level at NM4 was reduced to 65 dB(A) during school examination period from 23 to 25 Oct 2019 and from 5 to 11 Dec 2019 (8:30 am to 12:00 pm). Impact noise monitoring at NM4 on 6 and 11 Dec 2019 were conducted after the school examination those days. The corresponding Limit Level for the monitoring sessions was 70 dB(A).
2. The key activities of the Project during monitoring included reclamation works and land-side works. Reclamation works included deep cement mixing (DCM) works, marine filling, and seawall construction. Land-side works involved mainly foundation and substructure work for Terminal 2 expansion, modification and tunnel work for Automated People Mover (APM) and Baggage Handling System (BHS), and preparation work for utilities.
3. General weather condition during monitoring ranged from sunny to drizzle. Detailed meteorological conditions can be referred to Table 2.6 of this Report and corresponding Monthly EM&A Reports.
4. QA/ QC requirements as stipulated in the EM&A Manual were carried out during measurement.

# Water Quality Monitoring Results



**Notes:**

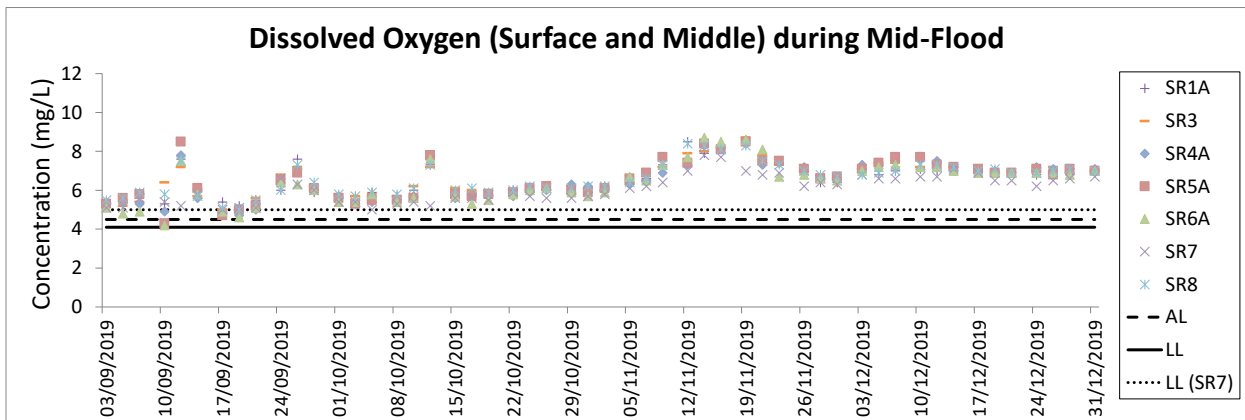
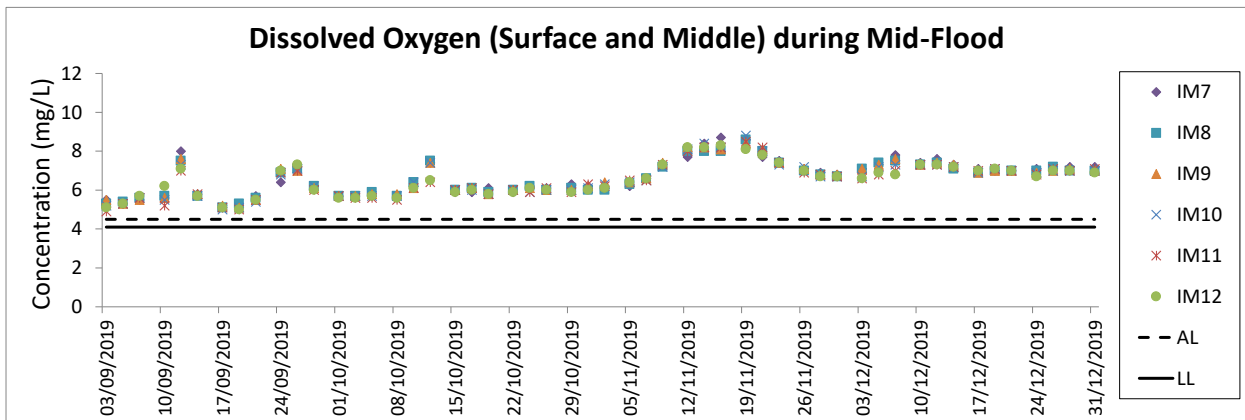
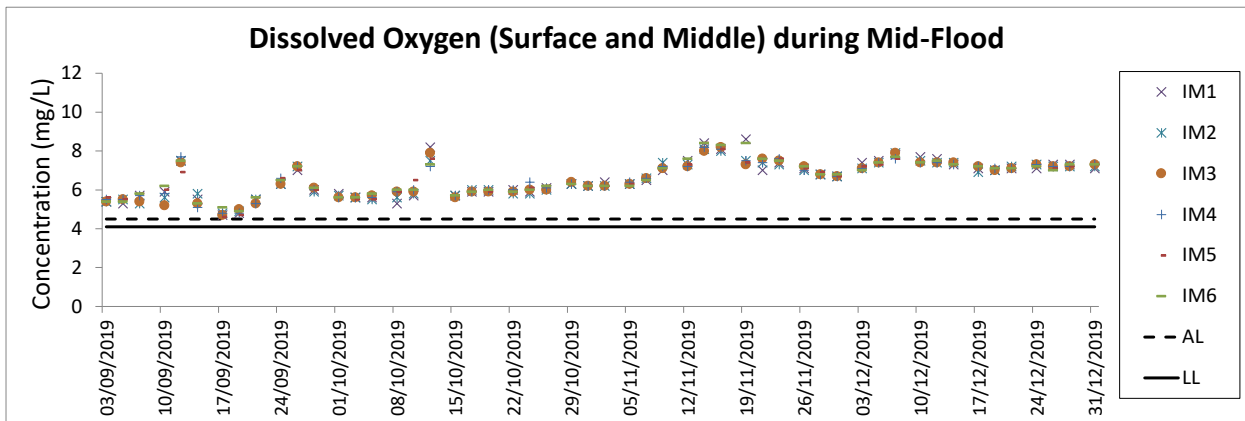
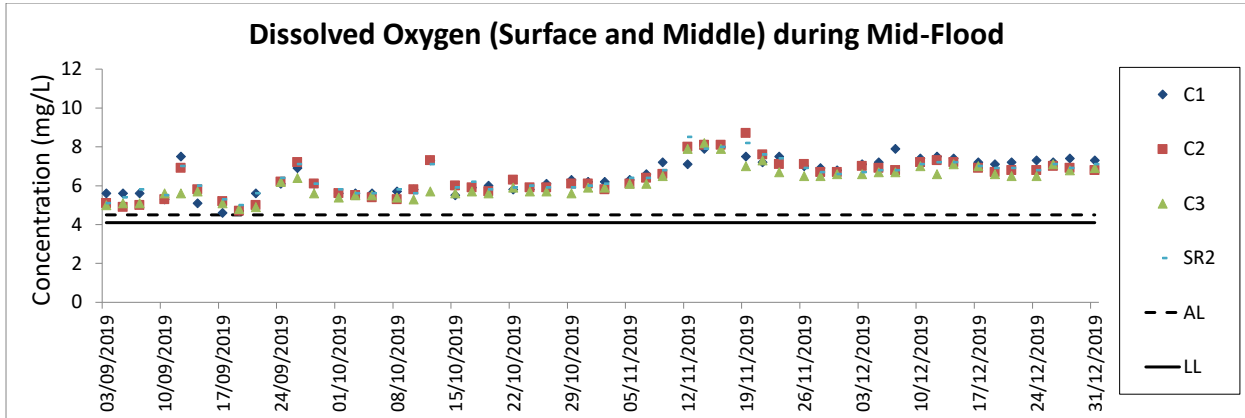
1. The key marine works activities of the Project during monitoring included deep cement mixing (DCM) works, marine filling, and seawall construction.
2. General weather condition during monitoring ranged from sunny to rainy, with sea condition ranged from calm to rough. Detailed meteorological conditions can be referred to Table 2.11 of this Report and corresponding Monthly EM&A Reports.
3. QA/ QC requirements as stipulated in the EM&A Manual were carried out during measurement.



**Notes:**

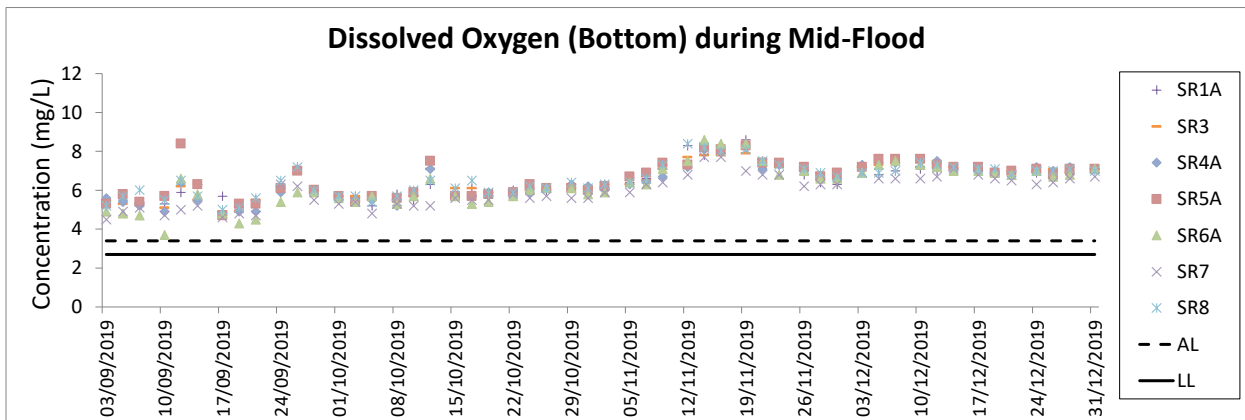
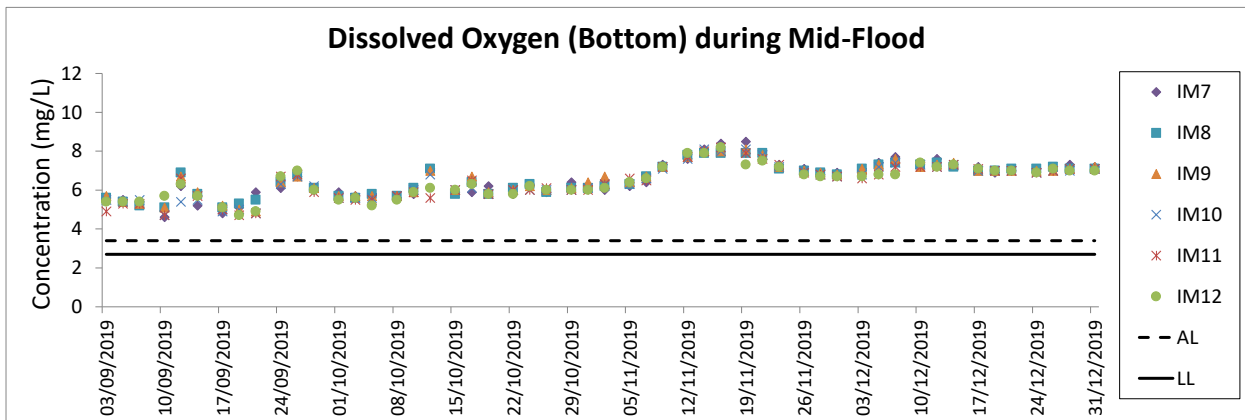
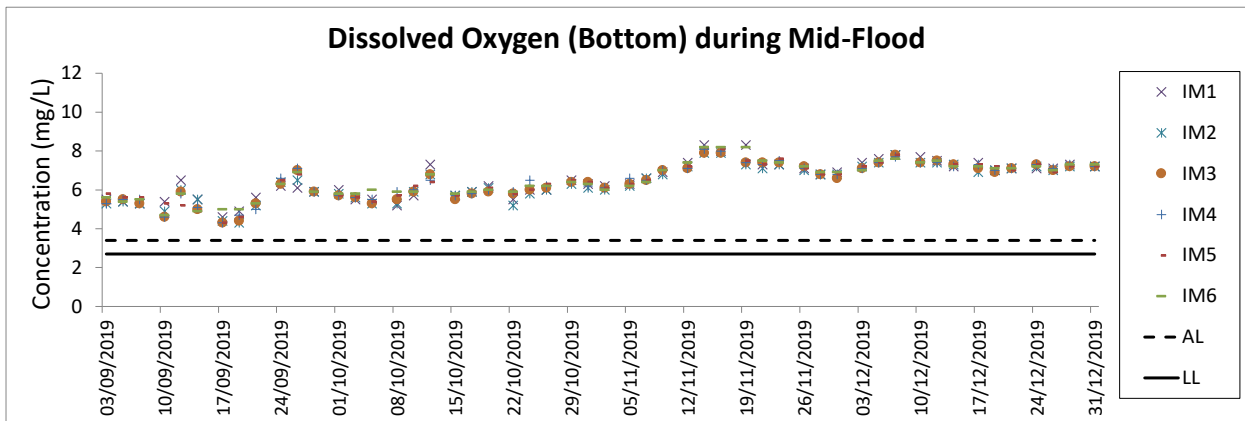
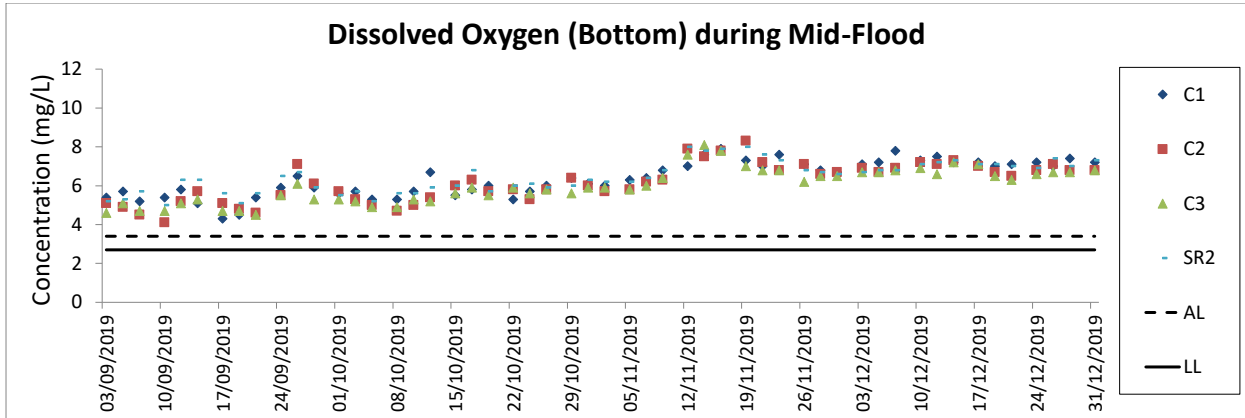
1. The key marine works activities of the Project during monitoring included deep cement mixing (DCM) works, marine filling, and seawall construction.
2. General weather condition during monitoring ranged from sunny to rainy, with sea condition ranged from calm to rough. Detailed meteorological conditions can be referred to Table 2.11 of this Report and corresponding Monthly EM&A Reports.
3. QA/ QC requirements as stipulated in the EM&A Manual were carried out during measurement.





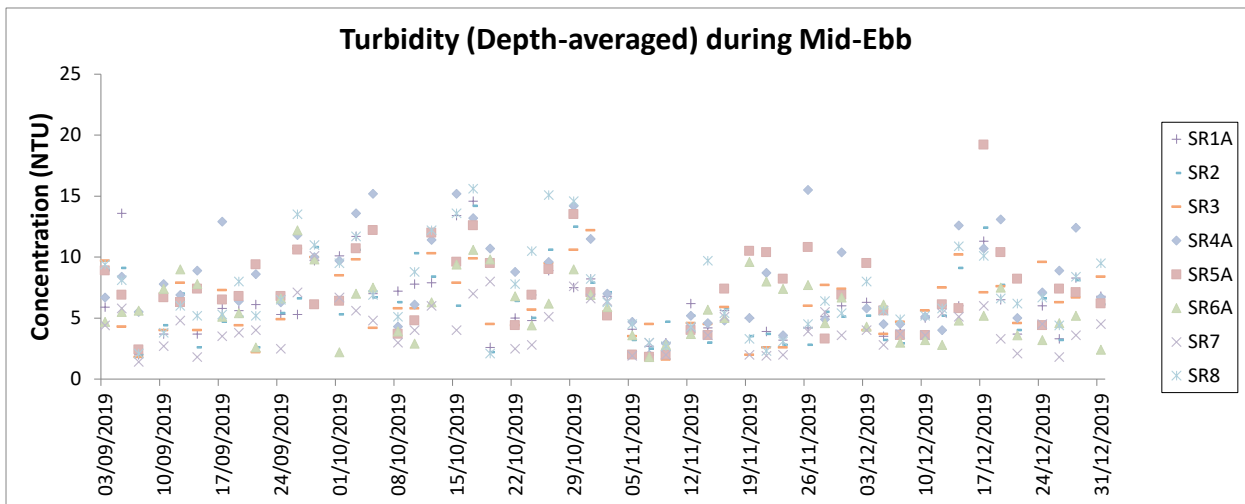
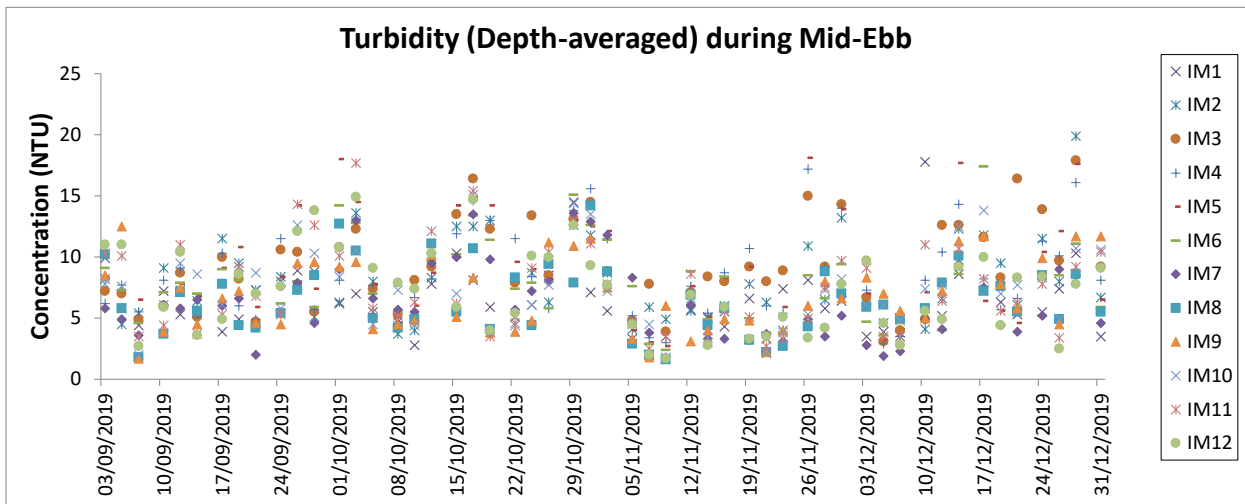
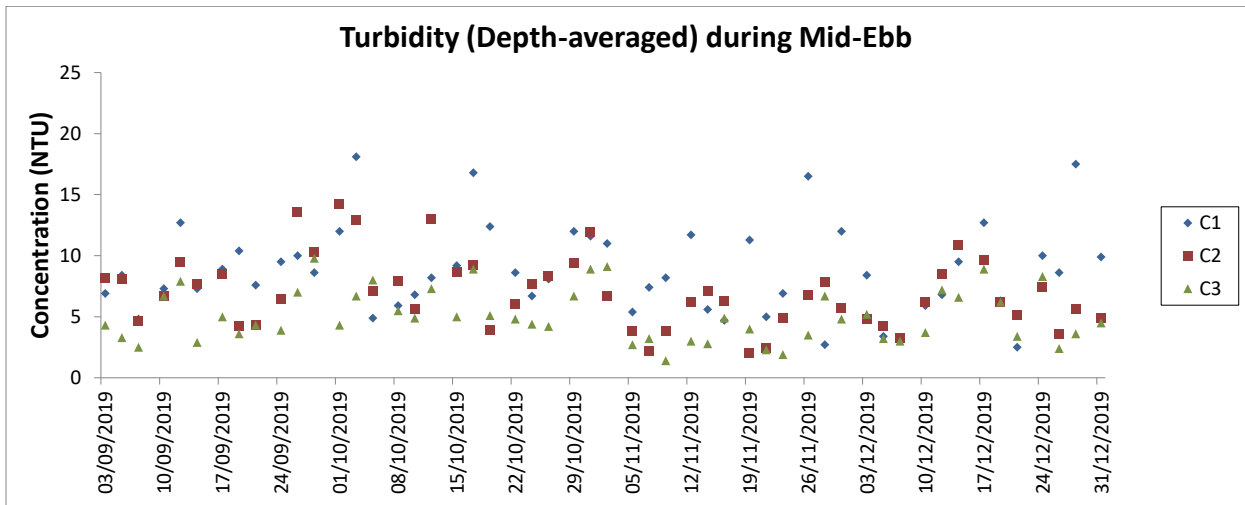
**Notes:**

1. The key marine works activities of the Project during monitoring included deep cement mixing (DCM) works, marine filling, and seawall construction.
2. General weather condition during monitoring ranged from sunny to rainy, with sea condition ranged from calm to rough. Detailed meteorological conditions can be referred to Table 2.11 of this Report and corresponding Monthly EM&A Reports.
3. QA/ QC requirements as stipulated in the EM&A Manual were carried out during measurement.



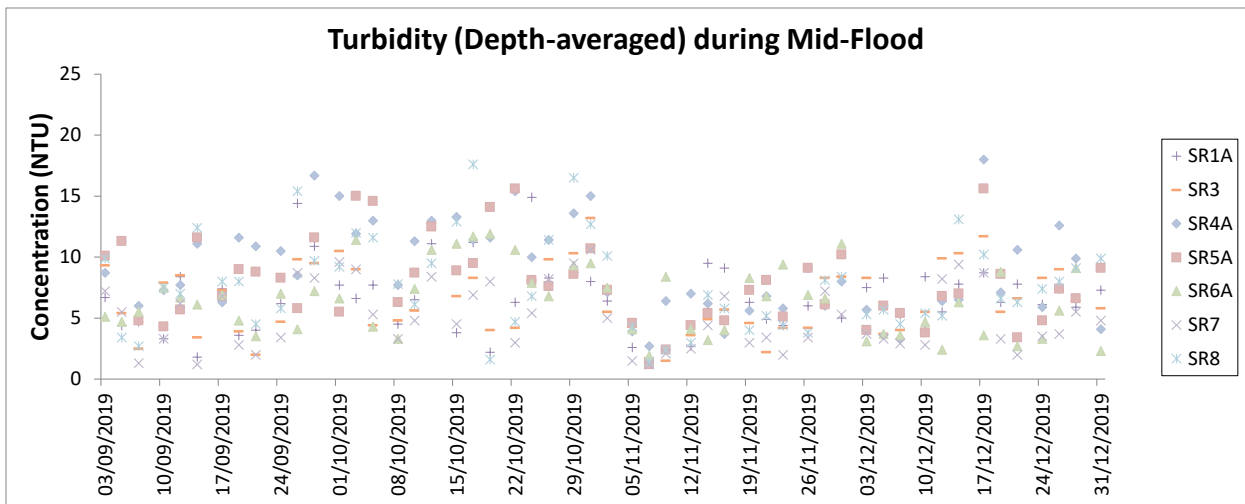
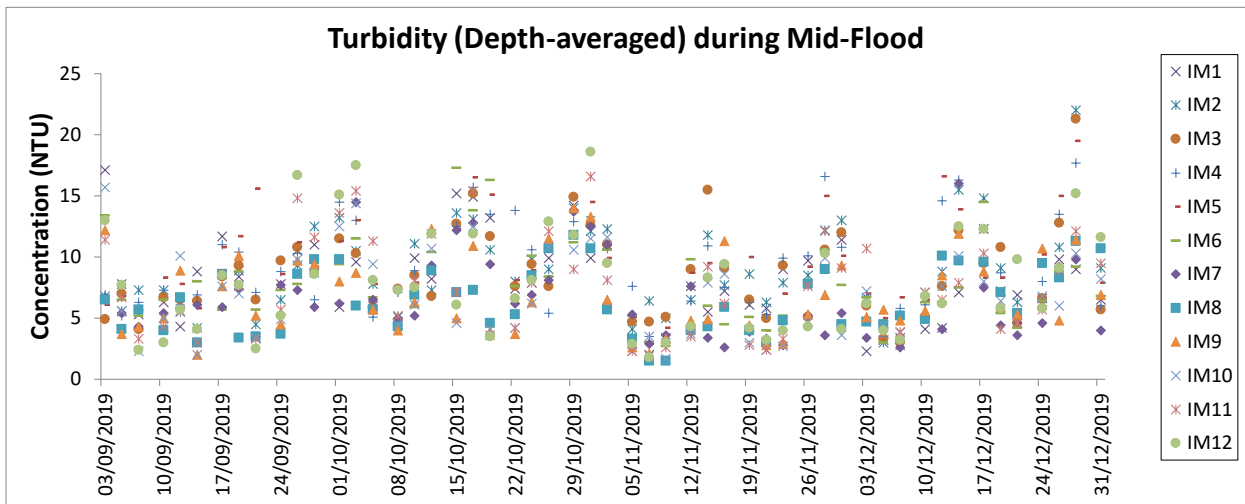
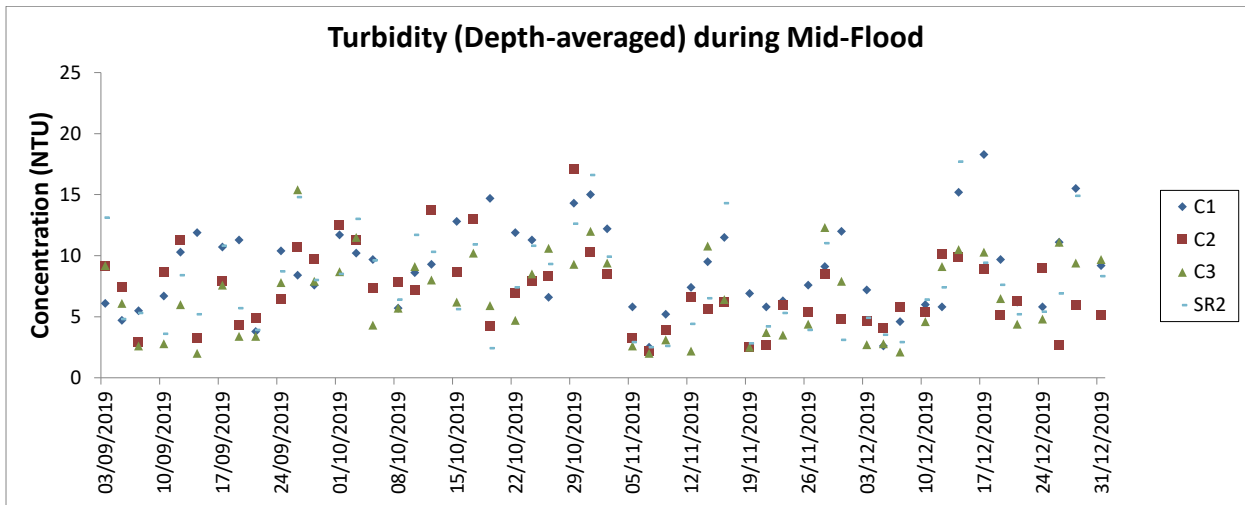
**Notes:**

1. The key marine works activities of the Project during monitoring included deep cement mixing (DCM) works, marine filling, and seawall construction.
2. General weather condition during monitoring ranged from sunny to rainy, with sea condition ranged from calm to rough. Detailed meteorological conditions can be referred to Table 2.11 of this Report and corresponding Monthly EM&A Reports.
3. QA/ QC requirements as stipulated in the EM&A Manual were carried out during measurement.



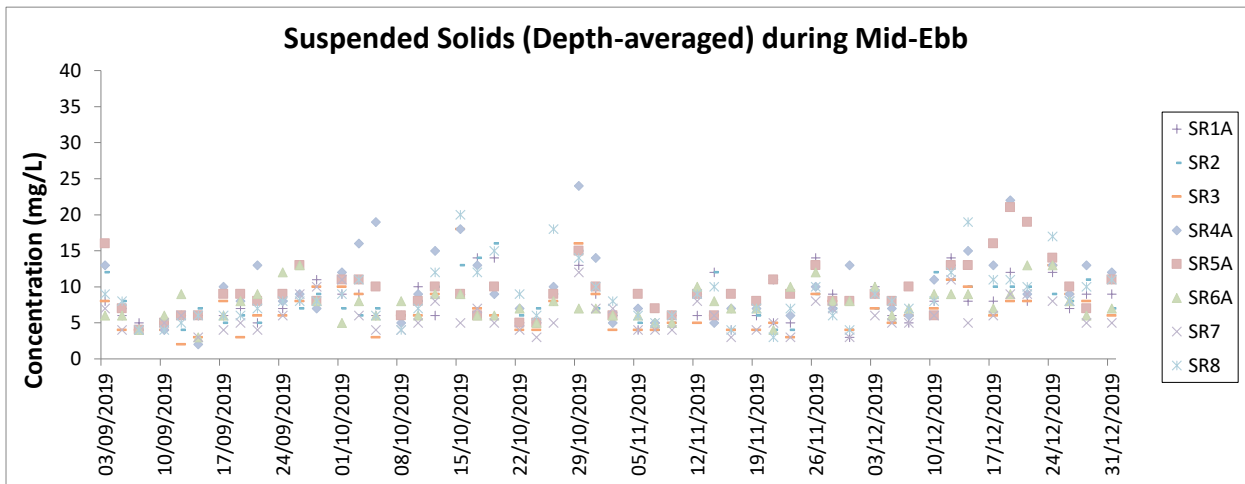
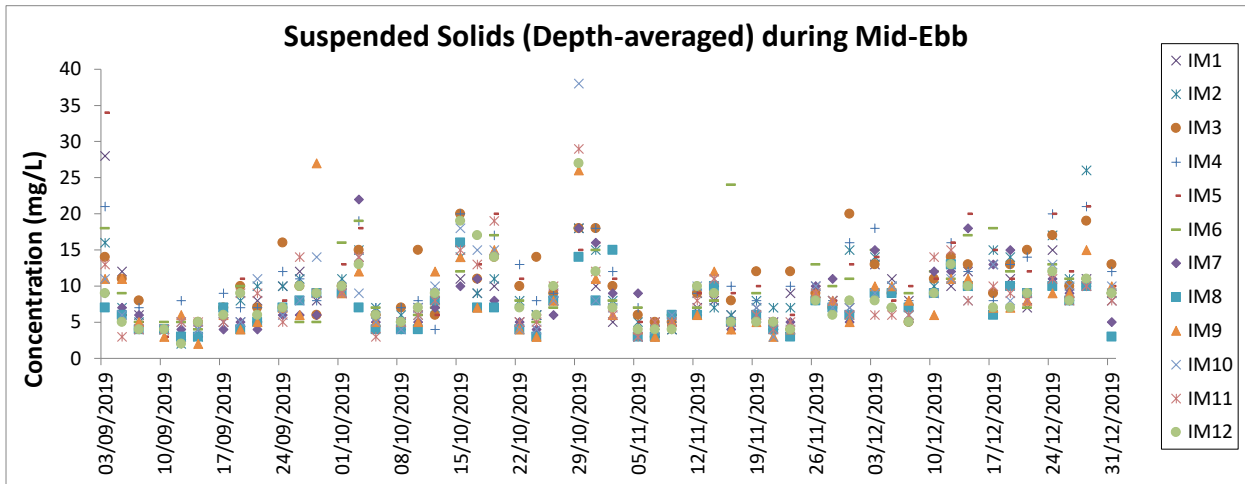
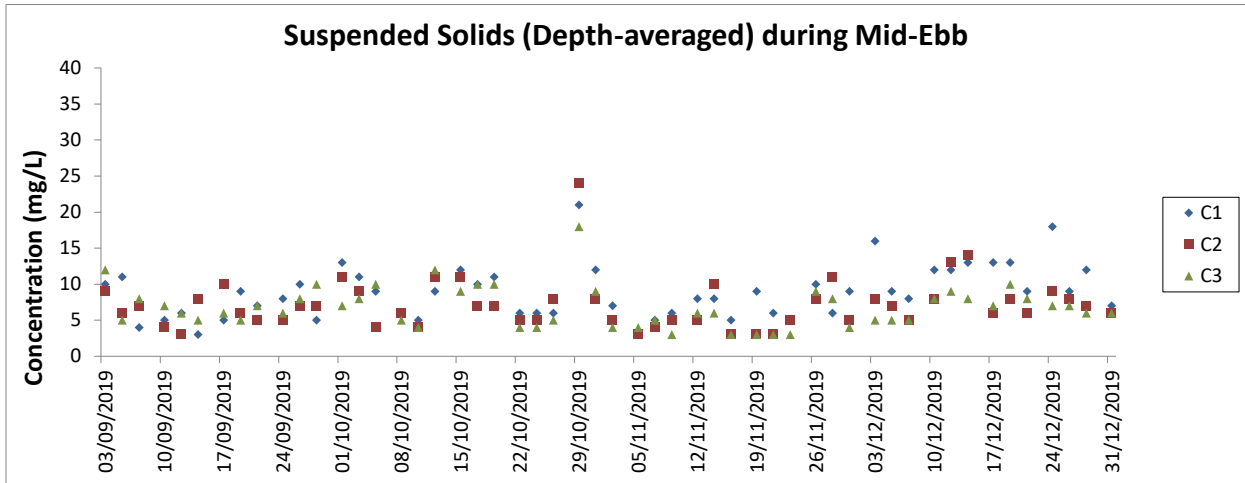
**Notes:**

1. The Action and Limit Levels can be referred to Table 2.8 of this Report.
2. The key marine works activities of the Project during monitoring included deep cement mixing (DCM) works, marine filling, and seawall construction.
3. General weather condition during monitoring ranged from sunny to rainy, with sea condition ranged from calm to rough. Detailed meteorological conditions can be referred to Table 2.11 of this Report and corresponding Monthly EM&A Reports.
4. QA/ QC requirements as stipulated in the EM&A Manual were carried out during measurement.



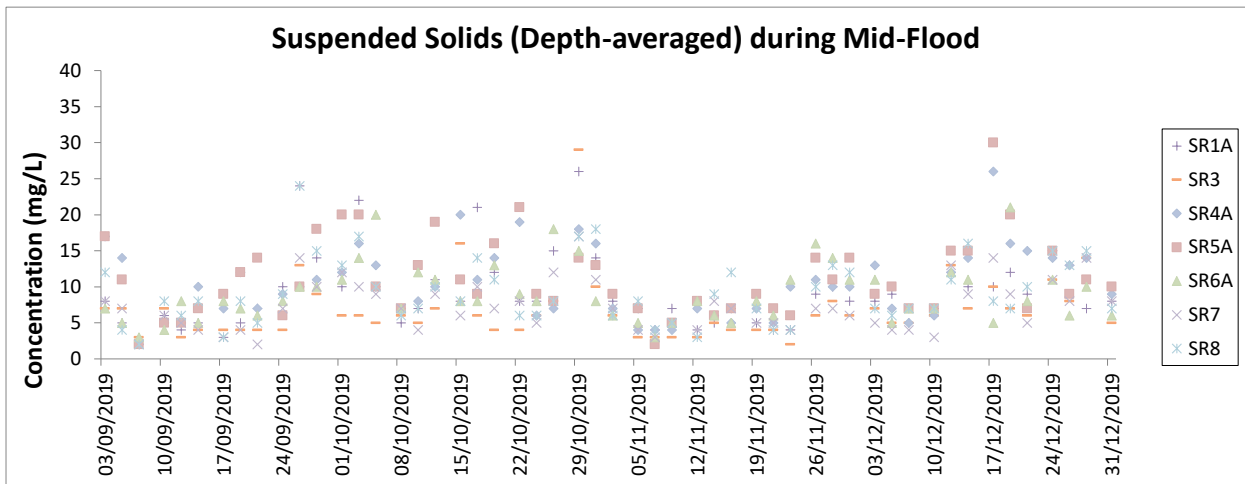
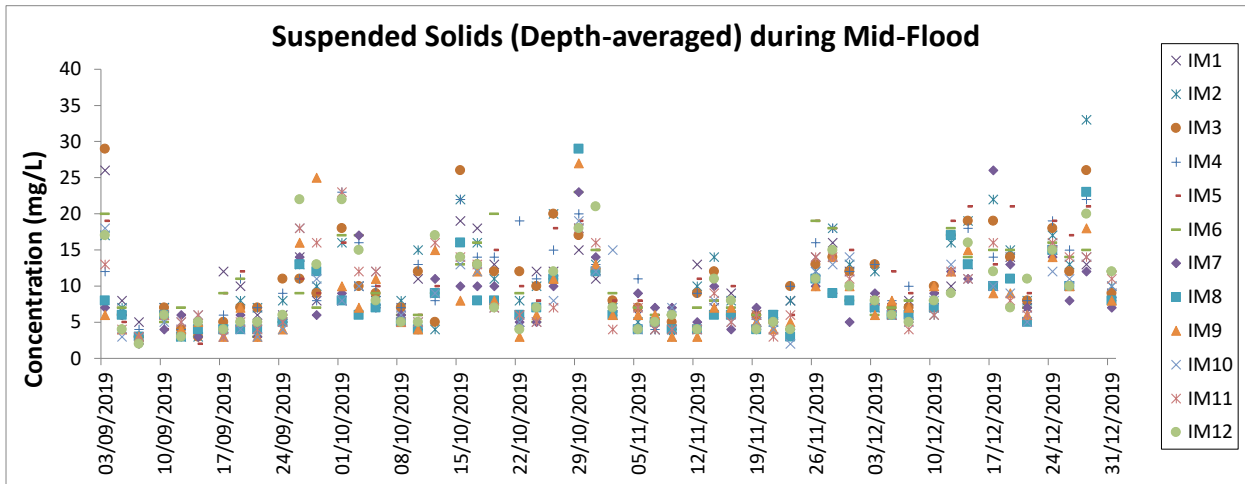
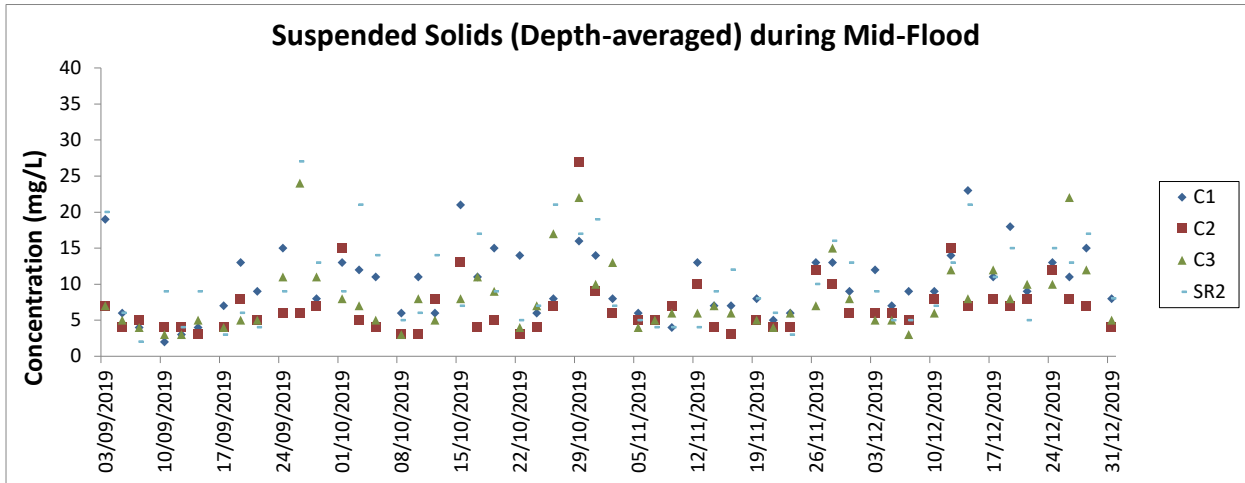
**Notes:**

1. The Action and Limit Levels can be referred to Table 2.8 of this Report.
2. The key marine works activities of the Project during monitoring included deep cement mixing (DCM) works, marine filling, and seawall construction.
3. General weather condition during monitoring ranged from sunny to rainy, with sea condition ranged from calm to rough. Detailed meteorological conditions can be referred to Table 2.11 of this Report and corresponding Monthly EM&A Reports.
4. QA/ QC requirements as stipulated in the EM&A Manual were carried out during measurement.



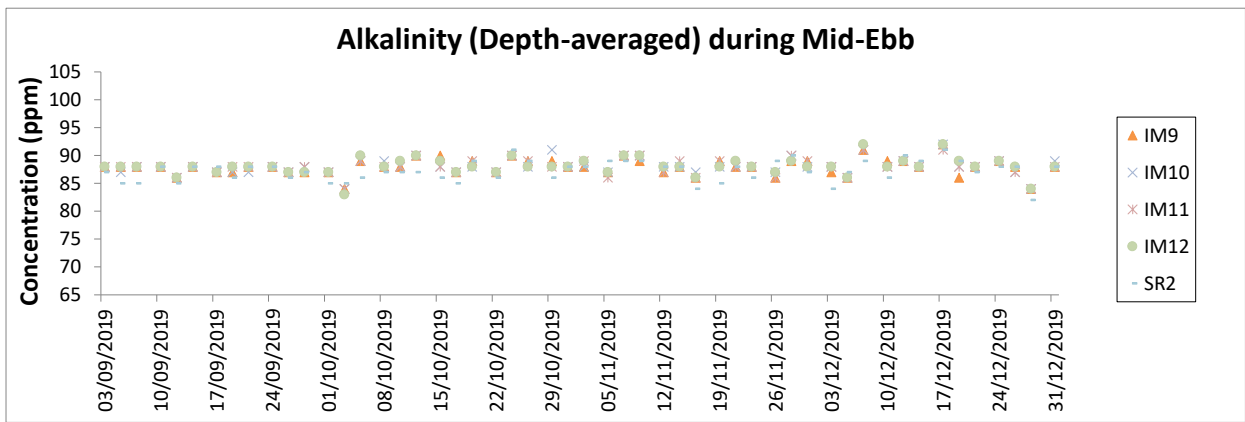
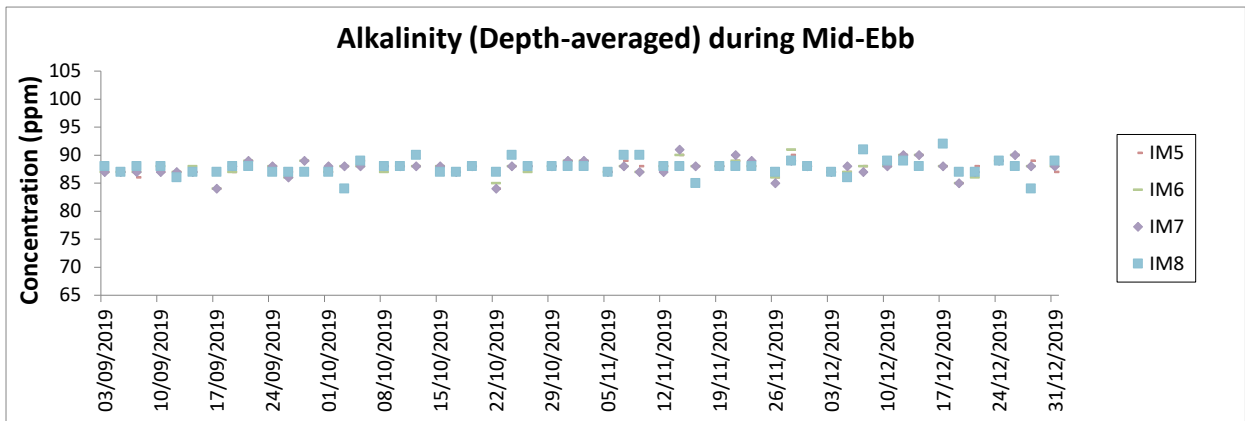
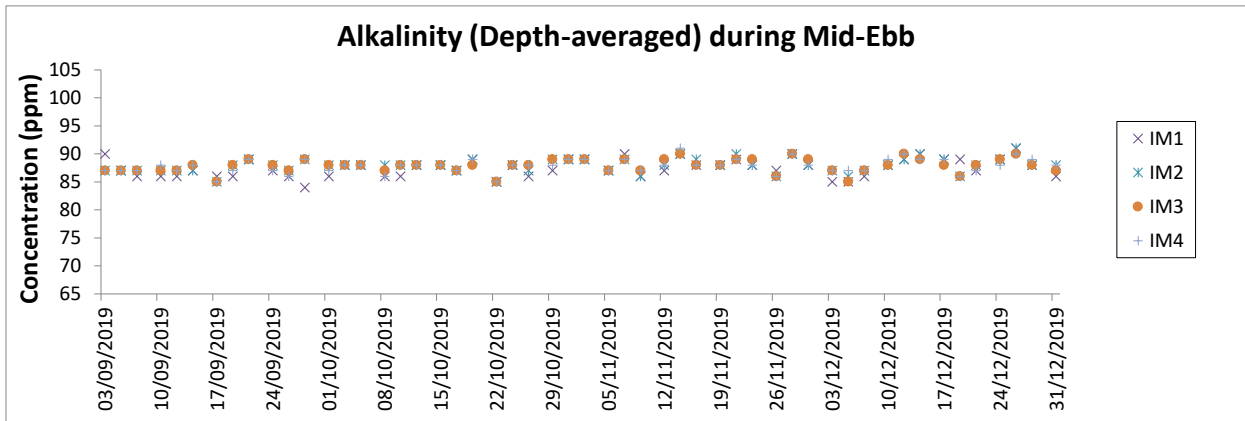
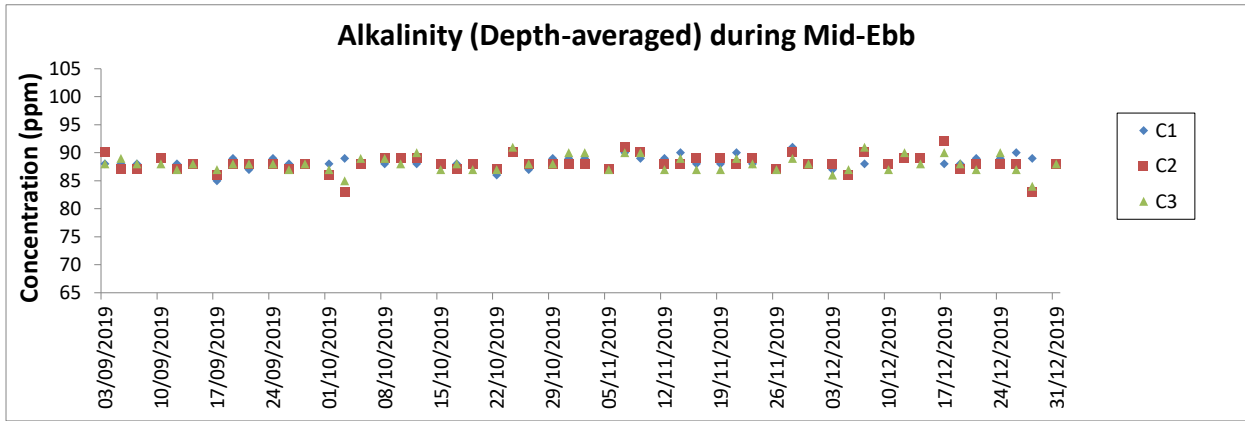
**Notes:**

1. The Action and Limit Levels can be referred to Table 2.8 of this Report.
2. The key marine works activities of the Project during monitoring included deep cement mixing (DCM) works, marine filling, and seawall construction.
3. General weather condition during monitoring ranged from sunny to rainy, with sea condition ranged from calm to rough. Detailed meteorological conditions can be referred to Table 2.11 of this Report and corresponding Monthly EM&A Reports.
4. QA/ QC requirements as stipulated in the EM&A Manual were carried out during measurement.



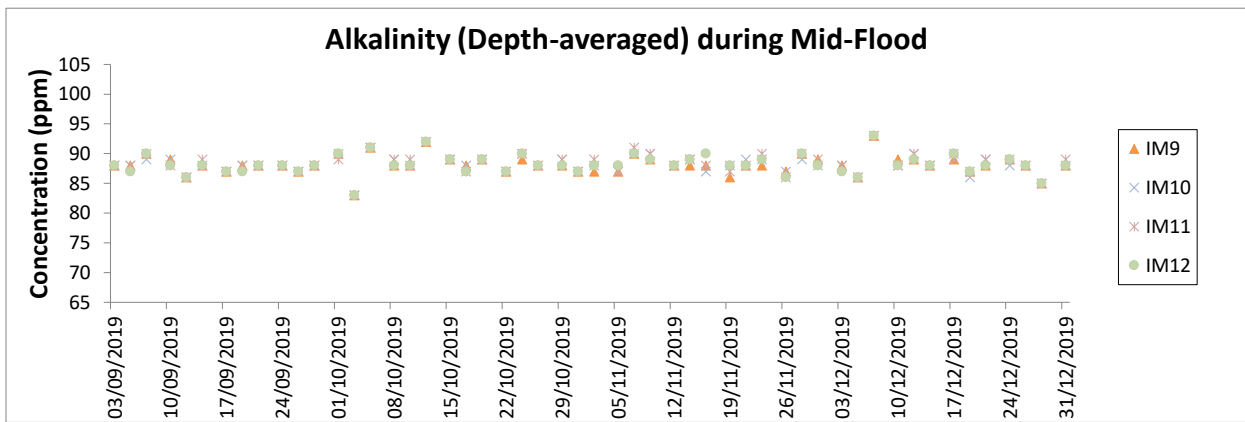
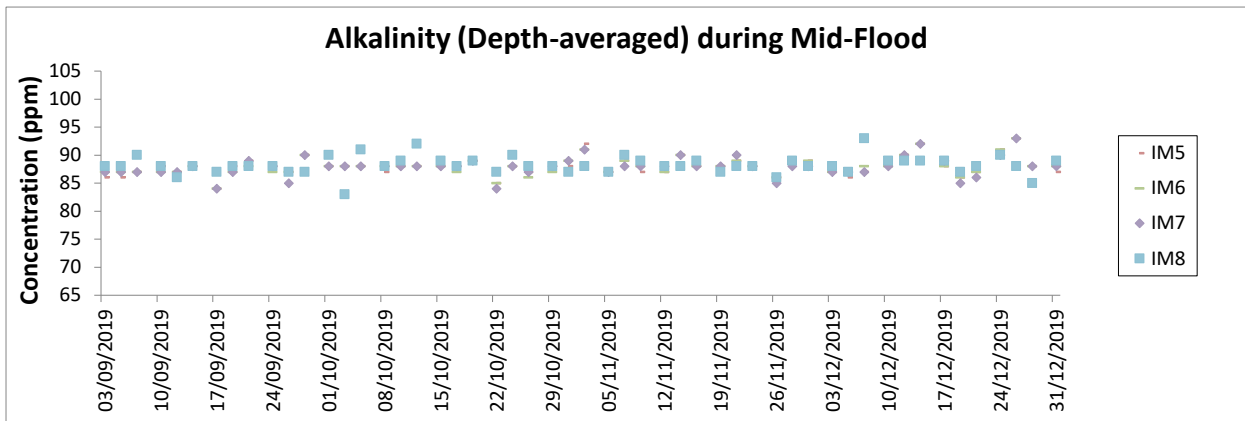
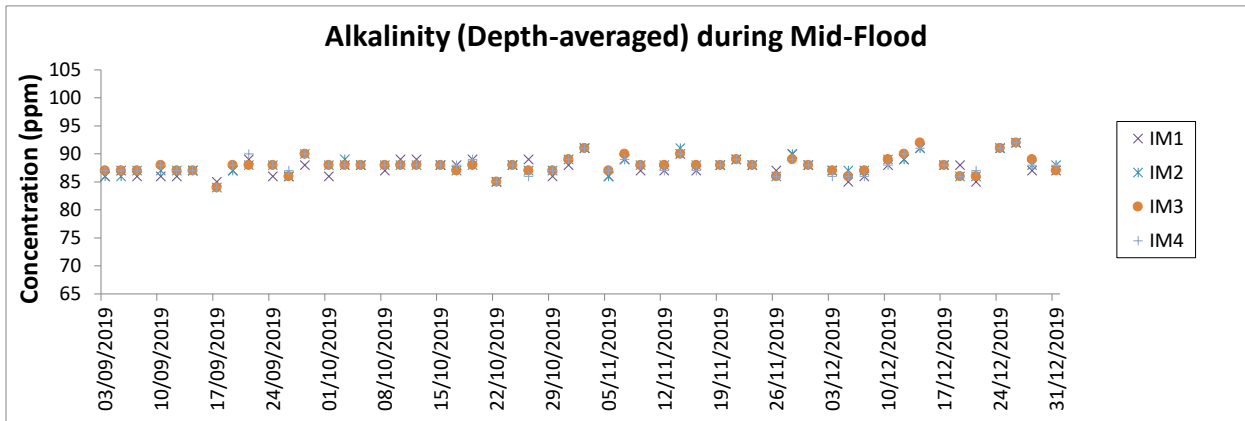
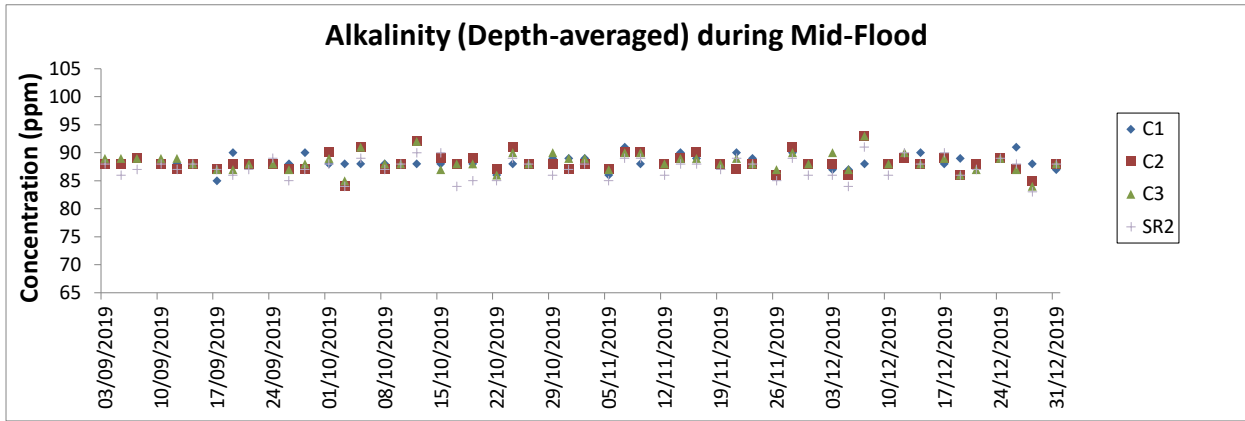
**Notes:**

1. The Action and Limit Levels can be referred to Table 2.8 of this Report.
2. The key marine works activities of the Project during monitoring included deep cement mixing (DCM) works, marine filling, and seawall construction.
3. General weather condition during monitoring ranged from sunny to rainy, with sea condition ranged from calm to rough. Detailed meteorological conditions can be referred to Table 2.11 of this Report and corresponding Monthly EM&A Reports.
4. QA/ QC requirements as stipulated in the EM&A Manual were carried out during measurement.



**Notes:**

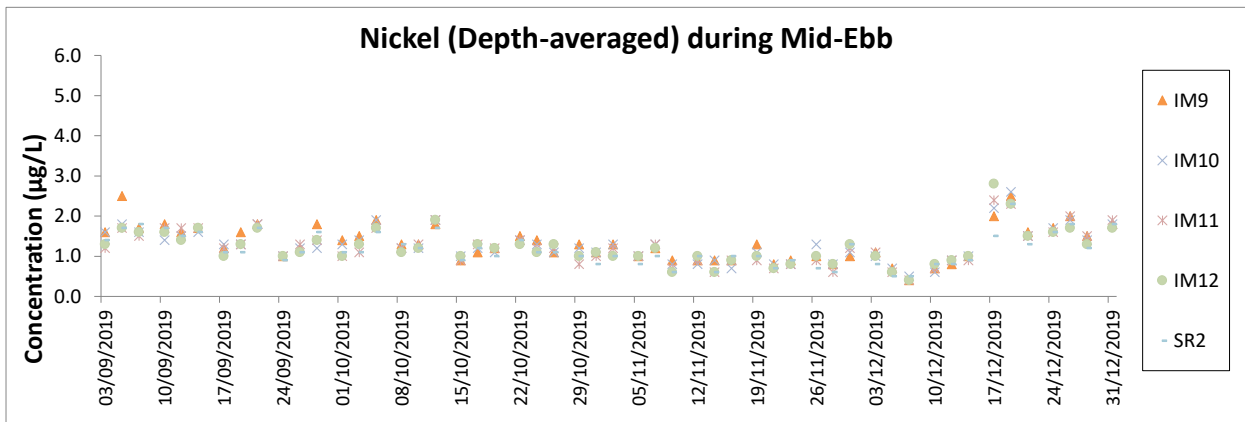
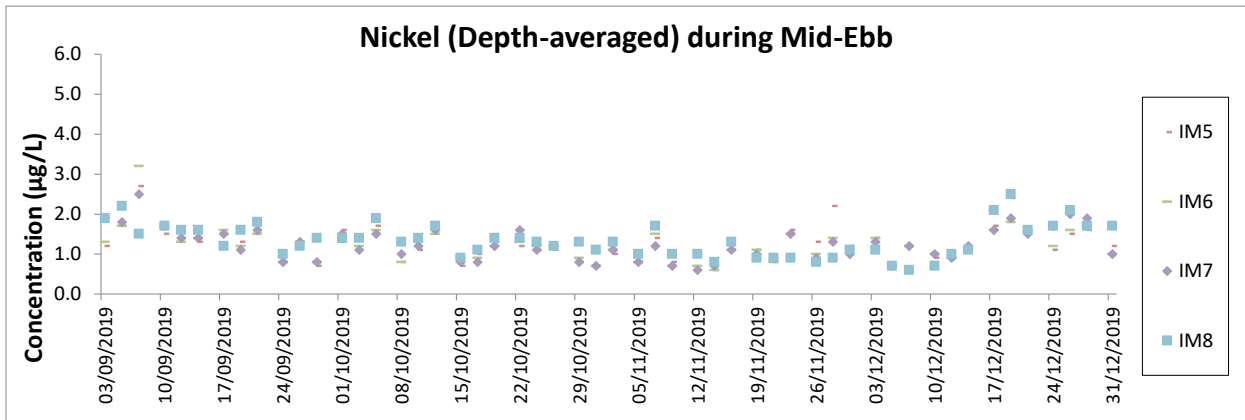
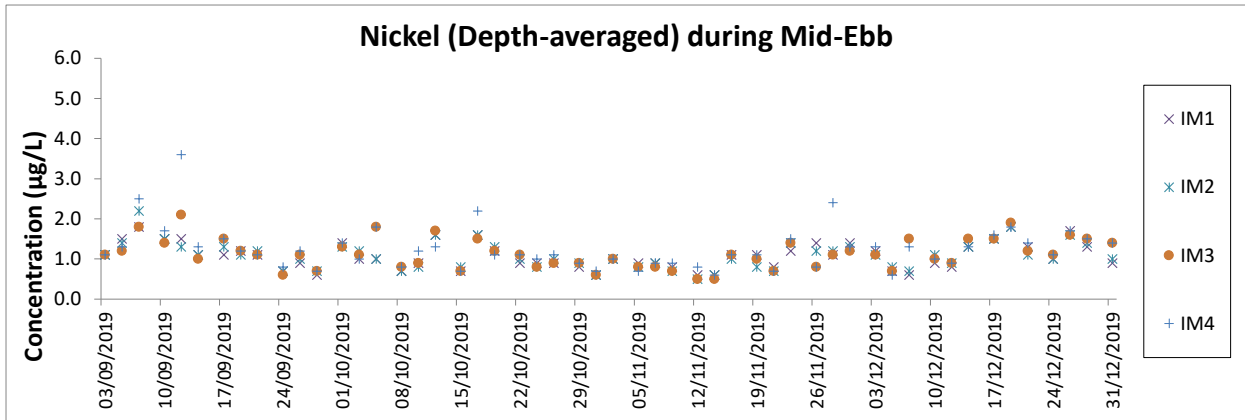
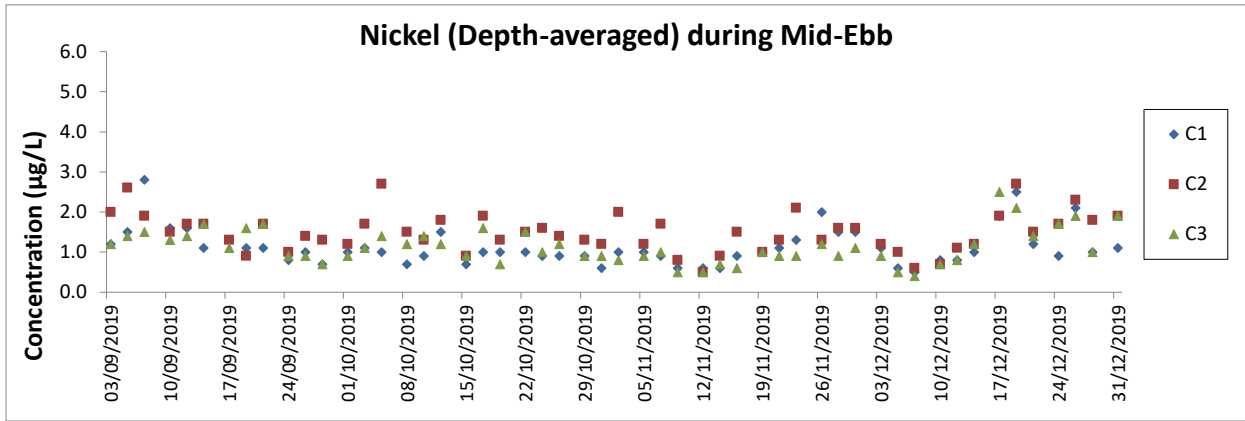
1. The Action and Limit Levels can be referred to Table 2.8 of this Report.
2. The key marine works activities of the Project during monitoring included deep cement mixing (DCM) works, marine filling, and seawall construction.
3. General weather condition during monitoring ranged from sunny to rainy, with sea condition ranged from calm to rough. Detailed meteorological conditions can be referred to Table 2.11 of this Report and corresponding Monthly EM&A Reports.
4. QA/ QC requirements as stipulated in the EM&A Manual were carried out during measurement.



**Notes:**

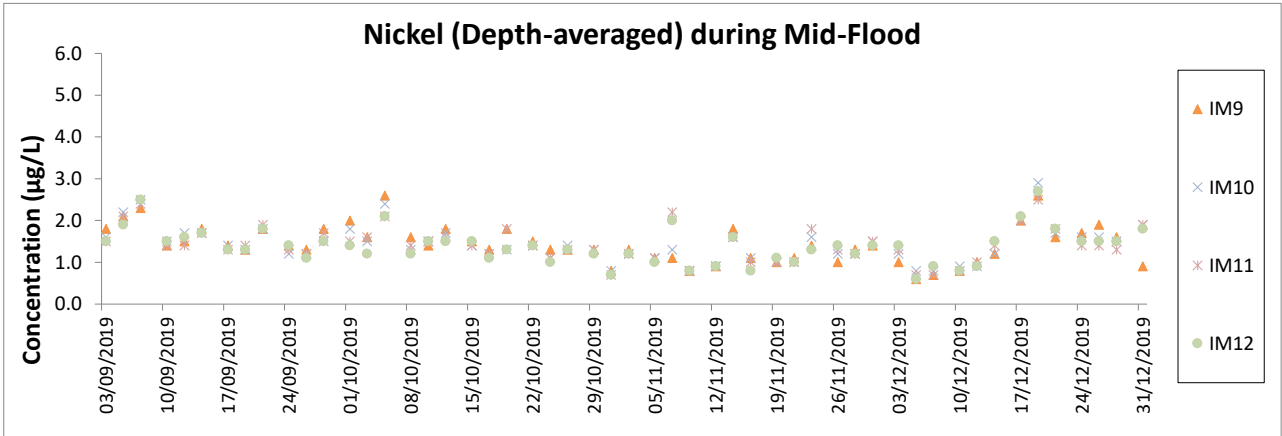
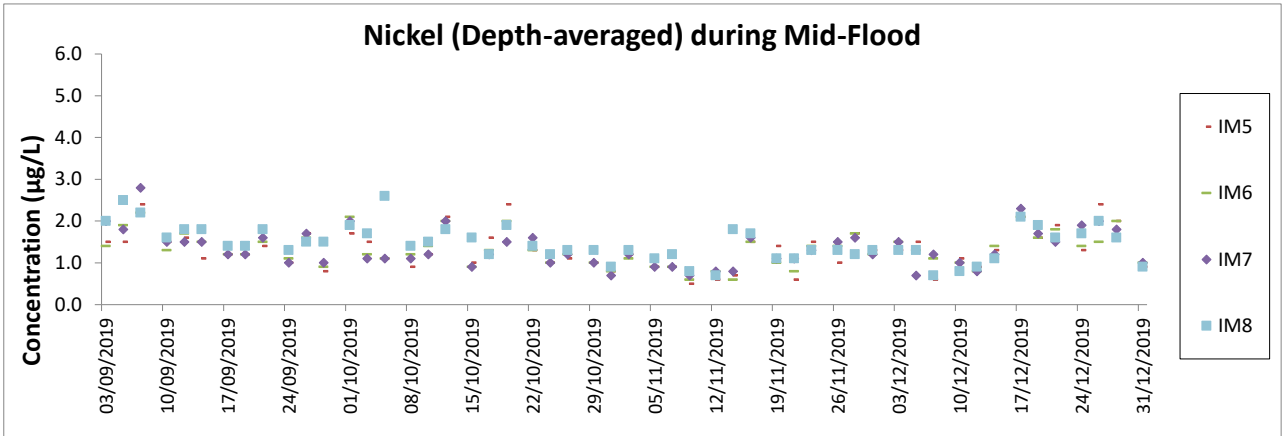
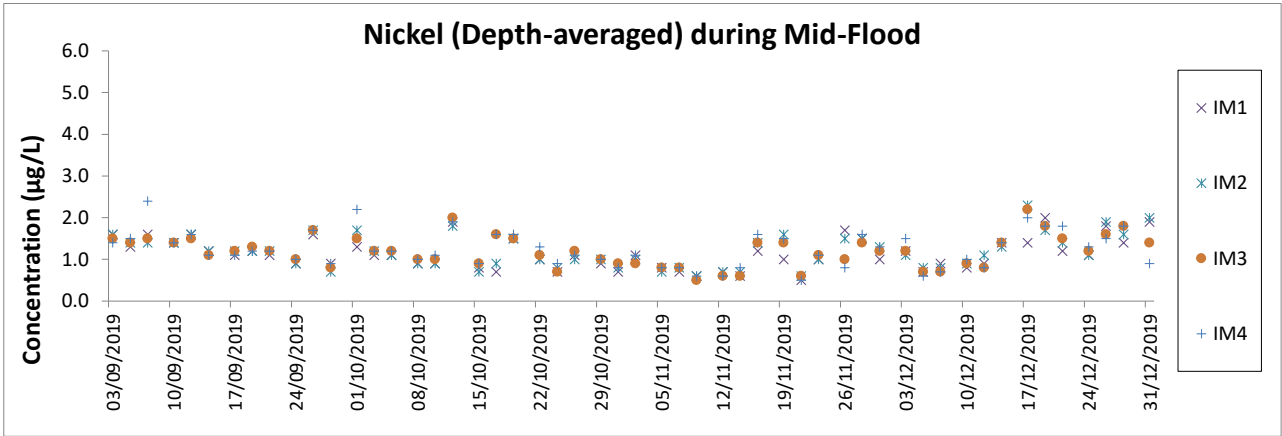
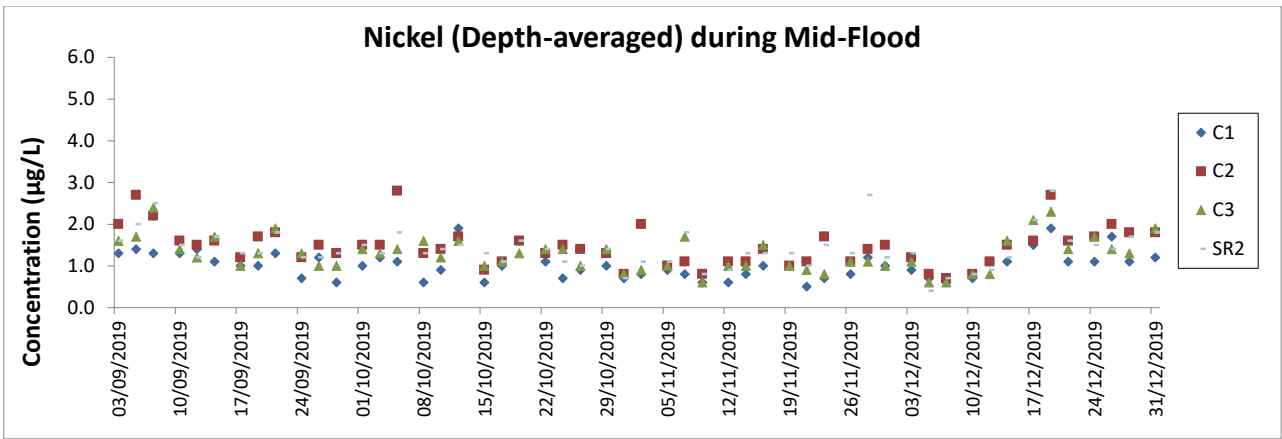
1. The Action and Limit Levels can be referred to Table 2.8 of this Report.
2. The key marine works activities of the Project during monitoring included deep cement mixing (DCM) works, marine filling, and seawall construction.
3. General weather condition during monitoring ranged from sunny to rainy, with sea condition ranged from calm to rough. Detailed meteorological conditions can be referred to Table 2.11 of this Report and corresponding Monthly EM&A Reports.
4. QA/ QC requirements as stipulated in the EM&A Manual were carried out during measurement.





**Notes:**

1. The Action and Limit Levels can be referred to Table 2.8 of this Report.
2. The key marine works activities of the Project during monitoring included deep cement mixing (DCM) works, marine filling, and seawall construction.
3. General weather condition during monitoring ranged from sunny to rainy, with sea condition ranged from calm to rough. Detailed meteorological conditions can be referred to Table 2.11 of this Report and corresponding Monthly EM&A Reports.
4. QA/ QC requirements as stipulated in the EM&A Manual were carried out during measurement.



**Notes:**

1. The Action and Limit Levels can be referred to Table 2.8 of this Report.
2. The key marine works activities of the Project during monitoring included deep cement mixing (DCM) works, marine filling, and seawall construction.
3. General weather condition during monitoring ranged from sunny to rainy, with sea condition ranged from calm to rough. Detailed meteorological conditions can be referred to Table 2.11 of this Report and corresponding Monthly EM&A Reports.
4. QA/ QC requirements as stipulated in the EM&A Manual were carried out during measurement.
5. All chromium results in the reporting period was below the reporting limit 0.2 µg/L.

# Chinese White Dolphin Monitoring Results

## CWD Small Vessel Line-transect Survey

## Survey Effort Data

DATE	AREA	BEAU	KM SEARCHED	SEASON	VESSEL	TYPE	P/S
2-Oct-19	SWL	2	21.630	AUTUMN	32166	3RS ET	P
2-Oct-19	SWL	3	32.292	AUTUMN	32166	3RS ET	P
2-Oct-19	SWL	2	4.878	AUTUMN	32166	3RS ET	S
2-Oct-19	SWL	3	11.810	AUTUMN	32166	3RS ET	S
3-Oct-19	AW	2	3.470	AUTUMN	32166	3RS ET	P
3-Oct-19	WL	2	17.515	AUTUMN	32166	3RS ET	P
3-Oct-19	WL	2	9.401	AUTUMN	32166	3RS ET	S
4-Oct-19	SWL	2	49.551	AUTUMN	32166	3RS ET	P
4-Oct-19	SWL	3	2.100	AUTUMN	32166	3RS ET	P
4-Oct-19	SWL	2	16.128	AUTUMN	32166	3RS ET	S
4-Oct-19	SWL	3	1.100	AUTUMN	32166	3RS ET	S
10-Oct-19	NWL	2	40.510	AUTUMN	32166	3RS ET	P
10-Oct-19	NWL	3	21.930	AUTUMN	32166	3RS ET	P
10-Oct-19	NWL	2	10.970	AUTUMN	32166	3RS ET	S
10-Oct-19	NWL	3	0.900	AUTUMN	32166	3RS ET	S
11-Oct-19	AW	2	4.930	AUTUMN	32166	3RS ET	P
11-Oct-19	WL	2	19.410	AUTUMN	32166	3RS ET	P
11-Oct-19	WL	2	10.760	AUTUMN	32166	3RS ET	S
16-Oct-19	NEL	2	15.140	AUTUMN	32166	3RS ET	P
16-Oct-19	NEL	3	22.770	AUTUMN	32166	3RS ET	P
16-Oct-19	NEL	2	5.040	AUTUMN	32166	3RS ET	S
16-Oct-19	NEL	3	5.350	AUTUMN	32166	3RS ET	S
17-Oct-19	NEL	2	37.340	AUTUMN	32166	3RS ET	P
17-Oct-19	NEL	2	10.060	AUTUMN	32166	3RS ET	S
22-Oct-19	NWL	2	41.400	AUTUMN	32166	3RS ET	P
22-Oct-19	NWL	3	21.600	AUTUMN	32166	3RS ET	P
22-Oct-19	NWL	2	8.700	AUTUMN	32166	3RS ET	S
22-Oct-19	NWL	3	3.300	AUTUMN	32166	3RS ET	S
7-Nov-19	NEL	2	5.760	AUTUMN	32166	3RS ET	P
7-Nov-19	NEL	3	27.790	AUTUMN	32166	3RS ET	P
7-Nov-19	NEL	4	3.700	AUTUMN	32166	3RS ET	P
7-Nov-19	NEL	2	2.990	AUTUMN	32166	3RS ET	S
7-Nov-19	NEL	3	7.460	AUTUMN	32166	3RS ET	S
8-Nov-19	NEL	2	11.100	AUTUMN	32166	3RS ET	P
8-Nov-19	NEL	3	25.840	AUTUMN	32166	3RS ET	P
8-Nov-19	NEL	2	6.500	AUTUMN	32166	3RS ET	S
8-Nov-19	NEL	3	4.160	AUTUMN	32166	3RS ET	S
11-Nov-19	NWL	2	56.549	AUTUMN	32166	3RS ET	P
11-Nov-19	NWL	3	2.200	AUTUMN	32166	3RS ET	P
11-Nov-19	NWL	4	2.900	AUTUMN	32166	3RS ET	P
11-Nov-19	NWL	2	11.051	AUTUMN	32166	3RS ET	S
11-Nov-19	NWL	4	0.900	AUTUMN	32166	3RS ET	S
12-Nov-19	AW	3	4.760	AUTUMN	32166	3RS ET	P
12-Nov-19	WL	2	3.570	AUTUMN	32166	3RS ET	P
12-Nov-19	WL	3	14.600	AUTUMN	32166	3RS ET	P

DATE	AREA	BEAU	KM SEARCHED	SEASON	VESSEL	TYPE	P/S
12-Nov-19	WL	4	2.600	AUTUMN	32166	3RS ET	P
12-Nov-19	WL	2	2.990	AUTUMN	32166	3RS ET	S
12-Nov-19	WL	3	5.730	AUTUMN	32166	3RS ET	S
12-Nov-19	WL	4	1.300	AUTUMN	32166	3RS ET	S
13-Nov-19	NWL	2	57.200	AUTUMN	32166	3RS ET	P
13-Nov-19	NWL	3	6.000	AUTUMN	32166	3RS ET	P
13-Nov-19	NWL	2	11.800	AUTUMN	32166	3RS ET	S
21-Nov-19	SWL	2	5.700	AUTUMN	32166	3RS ET	P
21-Nov-19	SWL	3	48.558	AUTUMN	32166	3RS ET	P
21-Nov-19	SWL	2	1.300	AUTUMN	32166	3RS ET	S
21-Nov-19	SWL	3	14.822	AUTUMN	32166	3RS ET	S
22-Nov-19	AW	1	2.900	AUTUMN	32166	3RS ET	P
22-Nov-19	AW	2	2.070	AUTUMN	32166	3RS ET	P
22-Nov-19	WL	2	6.843	AUTUMN	32166	3RS ET	P
22-Nov-19	WL	3	12.828	AUTUMN	32166	3RS ET	P
22-Nov-19	WL	2	1.987	AUTUMN	32166	3RS ET	S
22-Nov-19	WL	3	7.842	AUTUMN	32166	3RS ET	S
29-Nov-19	SWL	2	22.710	AUTUMN	32166	3RS ET	P
29-Nov-19	SWL	3	28.090	AUTUMN	32166	3RS ET	P
29-Nov-19	SWL	4	3.600	AUTUMN	32166	3RS ET	P
29-Nov-19	SWL	2	9.890	AUTUMN	32166	3RS ET	S
29-Nov-19	SWL	3	6.210	AUTUMN	32166	3RS ET	S
9-Dec-19	AW	3	4.860	WINTER	32166	3RS ET	P
9-Dec-19	WL	3	21.298	WINTER	32166	3RS ET	P
9-Dec-19	WL	4	2.800	WINTER	32166	3RS ET	P
9-Dec-19	WL	3	9.102	WINTER	32166	3RS ET	S
9-Dec-19	WL	4	0.900	WINTER	32166	3RS ET	S
10-Dec-19	SWL	2	30.840	WINTER	32166	3RS ET	P
10-Dec-19	SWL	3	23.200	WINTER	32166	3RS ET	P
10-Dec-19	SWL	2	7.990	WINTER	32166	3RS ET	S
10-Dec-19	SWL	3	8.100	WINTER	32166	3RS ET	S
13-Dec-19	NEL	2	1.500	WINTER	32166	3RS ET	P
13-Dec-19	NEL	3	35.350	WINTER	32166	3RS ET	P
13-Dec-19	NEL	4	0.400	WINTER	32166	3RS ET	P
13-Dec-19	NEL	3	10.350	WINTER	32166	3RS ET	S
16-Dec-19	NWL	2	37.711	WINTER	32166	3RS ET	P
16-Dec-19	NWL	3	25.070	WINTER	32166	3RS ET	P
16-Dec-19	NWL	2	8.660	WINTER	32166	3RS ET	S
16-Dec-19	NWL	3	2.860	WINTER	32166	3RS ET	S
17-Dec-19	SWL	2	46.934	WINTER	32166	3RS ET	P
17-Dec-19	SWL	3	8.050	WINTER	32166	3RS ET	P
17-Dec-19	SWL	2	12.746	WINTER	32166	3RS ET	S
17-Dec-19	SWL	3	3.170	WINTER	32166	3RS ET	S
18-Dec-19	AW	1	4.530	WINTER	32166	3RS ET	P
18-Dec-19	WL	1	10.510	WINTER	32166	3RS ET	P
18-Dec-19	WL	2	6.930	WINTER	32166	3RS ET	P
18-Dec-19	WL	1	4.850	WINTER	32166	3RS ET	S

<b>DATE</b>	<b>AREA</b>	<b>BEAU</b>	<b>KM SEARCHED</b>	<b>SEASON</b>	<b>VESSEL</b>	<b>TYPE</b>	<b>P/S</b>
18-Dec-19	WL	2	4.940	WINTER	32166	3RS ET	S
19-Dec-19	NEL	1	2.700	WINTER	32166	3RS ET	P
19-Dec-19	NEL	2	15.000	WINTER	32166	3RS ET	P
19-Dec-19	NEL	3	18.090	WINTER	32166	3RS ET	P
19-Dec-19	NEL	4	1.670	WINTER	32166	3RS ET	P
19-Dec-19	NEL	1	1.300	WINTER	32166	3RS ET	S
19-Dec-19	NEL	2	2.700	WINTER	32166	3RS ET	S
19-Dec-19	NEL	3	6.240	WINTER	32166	3RS ET	S
23-Dec-19	NWL	2	1.830	WINTER	32166	3RS ET	P
23-Dec-19	NWL	3	45.110	WINTER	32166	3RS ET	P
23-Dec-19	NWL	4	17.460	WINTER	32166	3RS ET	P
23-Dec-19	NWL	3	7.300	WINTER	32166	3RS ET	S
23-Dec-19	NWL	4	4.600	WINTER	32166	3RS ET	S

## CWD Small Vessel Line-transect Survey

## Sighting Data

DATE	STG #	TIME	CWD/FP	GP SZ	AREA	BEAU	PSD	EFFORT	TYPE	DEC LAT	DEC LON	SEASON	BOAT ASSOC.	P/S
2-Oct-19	1	1101	FP	2	SWL	3	1	ON	3RS ET	22.1476	113.9274	AUTUMN	NONE	P
2-Oct-19	2	1114	FP	1	SWL	3	25	ON	3RS ET	22.1706	113.9277	AUTUMN	NONE	P
2-Oct-19	3	1131	CWD	1	SWL	2	36	ON	3RS ET	22.2055	113.9269	AUTUMN	NONE	P
3-Oct-19	1	0937	CWD	7	AW	2	165	ON	3RS ET	22.2983	113.8853	AUTUMN	NONE	P
3-Oct-19	2	1026	CWD	4	WL	2	485	ON	3RS ET	22.2924	113.8612	AUTUMN	NONE	P
3-Oct-19	3	1110	CWD	2	WL	2	155	ON	3RS ET	22.2605	113.8479	AUTUMN	NONE	P
3-Oct-19	4	1122	CWD	1	WL	2	127	ON	3RS ET	22.2603	113.8411	AUTUMN	NONE	P
3-Oct-19	5	1146	CWD	3	WL	2	181	ON	3RS ET	22.2416	113.8434	AUTUMN	NONE	P
3-Oct-19	6	1157	CWD	4	WL	2	207	ON	3RS ET	22.2416	113.8344	AUTUMN	NONE	P
3-Oct-19	7	1220	CWD	7	WL	2	382	ON	3RS ET	22.2282	113.8378	AUTUMN	NONE	S
3-Oct-19	8	1308	CWD	14	WL	2	265	ON	3RS ET	22.1960	113.8365	AUTUMN	NONE	P
4-Oct-19	1	1103	FP	16	SWL	2	112	ON	3RS ET	22.1428	113.9283	AUTUMN	NONE	S
4-Oct-19	2	1154	FP	2	SWL	2	114	ON	3RS ET	22.1899	113.9181	AUTUMN	NONE	P
4-Oct-19	3	1233	FP	3	SWL	2	65	ON	3RS ET	22.1542	113.9067	AUTUMN	NONE	S
4-Oct-19	4	1242	FP	2	SWL	2	19	ON	3RS ET	22.1568	113.8996	AUTUMN	NONE	S
4-Oct-19	5	1321	CWD	1	SWL	2	296	ON	3RS ET	22.2063	113.8972	AUTUMN	NONE	P
4-Oct-19	6	1356	FP	2	SWL	2	270	ON	3RS ET	22.1486	113.8921	AUTUMN	NONE	S
4-Oct-19	7	1411	FP	1	SWL	2	223	ON	3RS ET	22.1727	113.8882	AUTUMN	NONE	P
10-Oct-19	1	1047	CWD	2	NWL	3	16	ON	3RS ET	22.2709	113.8702	AUTUMN	NONE	P
10-Oct-19	2	1107	CWD	1	NWL	2	100	ON	3RS ET	22.2970	113.8779	AUTUMN	NONE	P
10-Oct-19	3	1205	CWD	4	NWL	2	112	ON	3RS ET	22.3769	113.8775	AUTUMN	NONE	P
11-Oct-19	1	1050	CWD	2	WL	2	214	ON	3RS ET	22.2503	113.8411	AUTUMN	NONE	P
11-Oct-19	2	1114	CWD	1	WL	2	26	ON	3RS ET	22.2414	113.8408	AUTUMN	NONE	P
11-Nov-19	1	1051	CWD	3	NWL	2	142	ON	3RS ET	22.2844	113.8702	AUTUMN	NONE	P
11-Nov-19	2	1155	CWD	1	NWL	2	112	ON	3RS ET	22.3605	113.8777	AUTUMN	NONE	P
11-Nov-19	3	1339	CWD	2	NWL	2	55	ON	3RS ET	22.3884	113.8980	AUTUMN	NONE	P
12-Nov-19	1	1039	CWD	3	WL	3	20	ON	3RS ET	22.2617	113.8548	AUTUMN	NONE	S
21-Nov-19	1	1113	FP	1	SWL	3	55	ON	3RS ET	22.1514	113.9361	AUTUMN	NONE	P
21-Nov-19	2	1151	CWD	1	SWL	3	23	ON	3RS ET	22.2056	113.9194	AUTUMN	NONE	S
21-Nov-19	3	1223	FP	1	SWL	3	151	ON	3RS ET	22.1518	113.9175	AUTUMN	NONE	P
21-Nov-19	4	1503	CWD	4	SWL	3	50	ON	3RS ET	22.1965	113.8686	AUTUMN	NONE	P

DATE	STG #	TIME	CWD/FP	GP SZ	AREA	BEAU	PSD	EFFORT	TYPE	DEC LAT	DEC LON	SEASON	BOAT ASSOC.	P/S
22-Nov-19	1	1020	CWD	1	WL	2	39	ON	3RS ET	22.2694	113.8571	AUTUMN	NONE	P
22-Nov-19	2	1100	CWD	4	WL	3	484	ON	3RS ET	22.2498	113.8460	AUTUMN	NONE	P
22-Nov-19	3	1127	CWD	1	WL	3	988	ON	3RS ET	22.2446	113.8493	AUTUMN	NONE	S
22-Nov-19	4	1145	CWD	3	WL	3	175	ON	3RS ET	22.2377	113.8275	AUTUMN	NONE	S
22-Nov-19	5	1216	CWD	1	WL	3	112	ON	3RS ET	22.2258	113.8375	AUTUMN	NONE	S
22-Nov-19	6	1329	CWD	2	SWL	2	N/A	OFF	3RS ET	22.1948	113.8524	AUTUMN	NONE	N/A
29-Nov-19	1	1321	FP	3	SWL	3	294	ON	3RS ET	22.1638	113.8972	AUTUMN	NONE	P
9-Dec-19	1	1101	CWD	2	WL	3	438	ON	3RS ET	22.2569	113.8371	WINTER	NONE	S
10-Dec-19	1	1114	FP	2	SWL	3	76	ON	3RS ET	22.1592	113.9281	WINTER	NONE	P
10-Dec-19	2	1450	CWD	1	SWL	2	216	ON	3RS ET	22.1958	113.8589	WINTER	GILLNETTER	P
10-Dec-19	3	1526	CWD	3	SWL	2	182	ON	3RS ET	22.1885	113.8492	WINTER	NONE	P
16-Dec-19	1	1033	CWD	1	NWL	3	107	ON	3RS ET	22.3041	113.8700	WINTER	NONE	P
16-Dec-19	2	1213	CWD	2	NWL	2	219	ON	3RS ET	22.3934	113.8876	WINTER	NONE	P
16-Dec-19	3	1227	CWD	3	NWL	2	301	ON	3RS ET	22.3882	113.8871	WINTER	NONE	P
17-Dec-19	1	1132	FP	1	SWL	2	187	ON	3RS ET	22.1704	113.8785	WINTER	NONE	P
17-Dec-19	2	1336	FP	2	SWL	2	199	ON	3RS ET	22.1451	113.9083	WINTER	NONE	P
17-Dec-19	3	1435	FP	2	SWL	2	472	ON	3RS ET	22.1677	113.9269	WINTER	NONE	P
18-Dec-19	1	0954	CWD	2	WL	1	4	ON	3RS ET	22.3045	113.8613	WINTER	NONE	P
18-Dec-19	2	1036	CWD	5	WL	2	107	ON	3RS ET	22.2605	113.8468	WINTER	NONE	P
18-Dec-19	3	1104	CWD	8	WL	1	18	ON	3RS ET	22.2538	113.8347	WINTER	NONE	S
18-Dec-19	4	1153	CWD	1	WL	2	40	ON	3RS ET	22.2232	113.8349	WINTER	NONE	P
18-Dec-19	5	1212	CWD	2	WL	2	5	ON	3RS ET	22.2182	113.8196	WINTER	NONE	S

Abbreviations: STG# = Sighting Number; GP SZ = Group Size; BEAU = Beaufort Sea State; PSD = Perpendicular Distance (in metres); N/A = Not Applicable; DEC LAT = Latitude (WGS84 in Decimal), DEC LON = Longitude (WGS84 in Decimal); BOAT ASSOC. = Fishing Boat Association

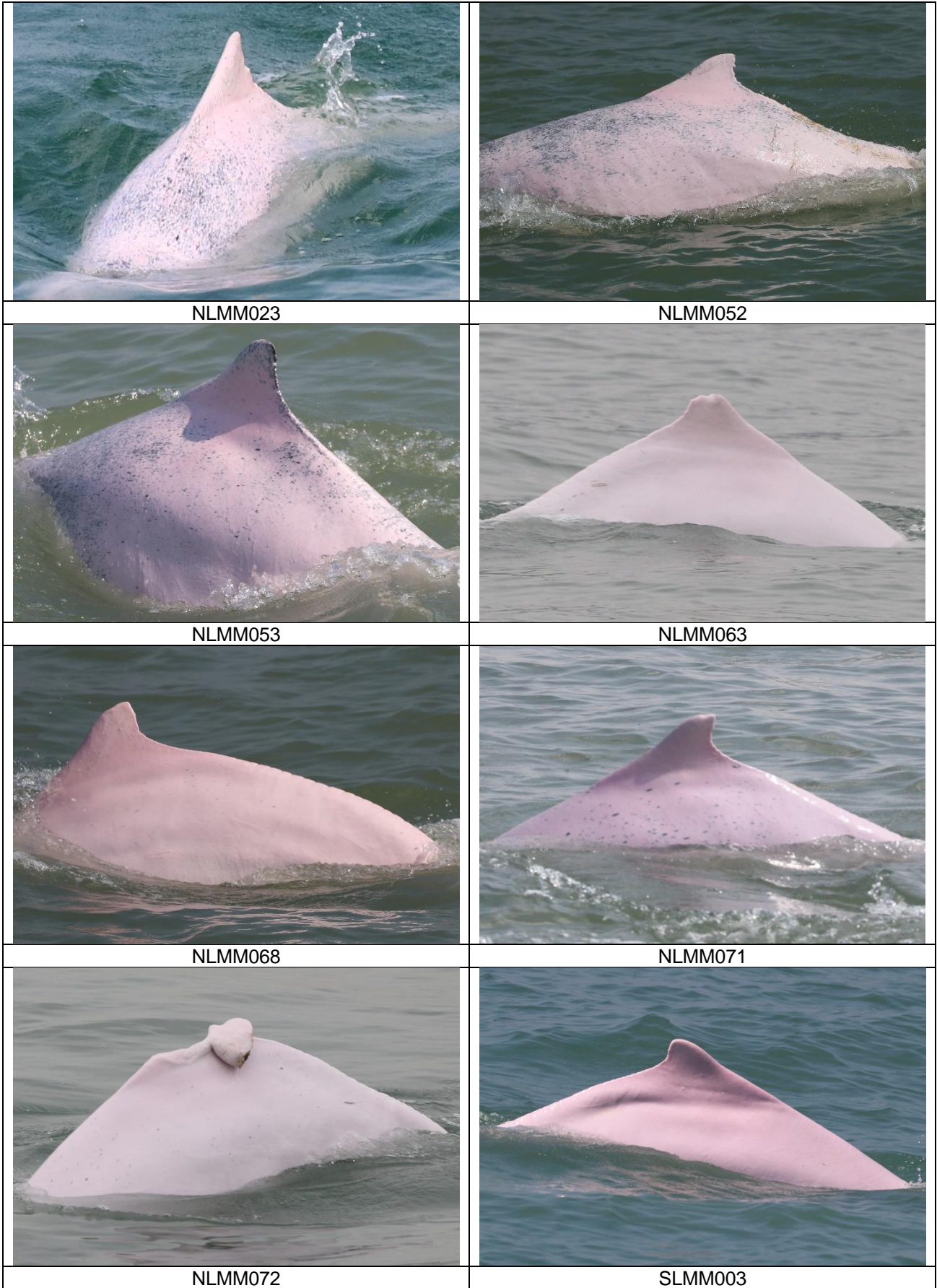
Sighting data of finless porpoise (FP) are presented for reference only. No relevant figure or text will be mentioned in the quarterly EM&A report. All FP sightings are excluded in calculation.



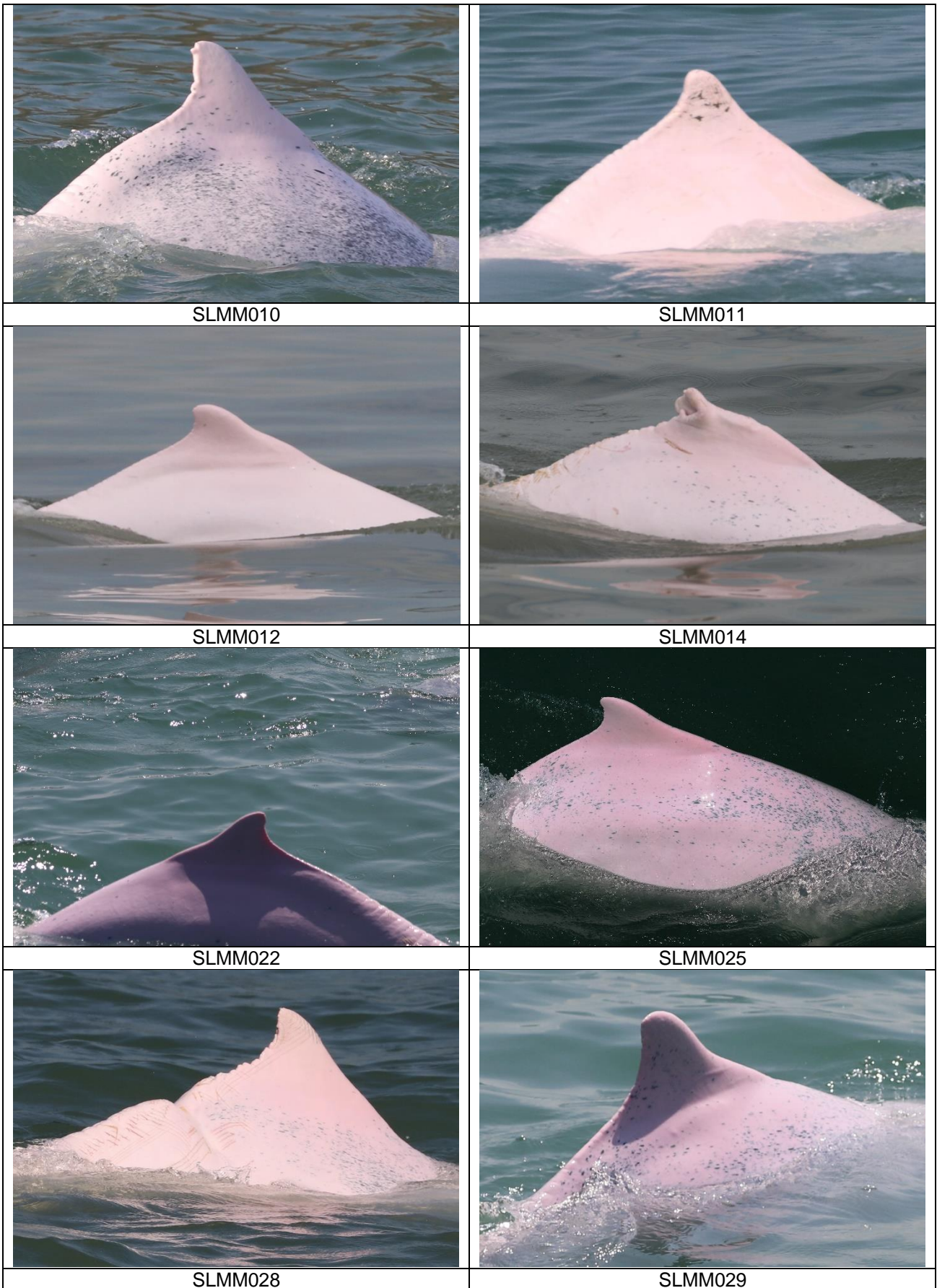
CWD Small Vessel Line-transect Survey

Photo Identification

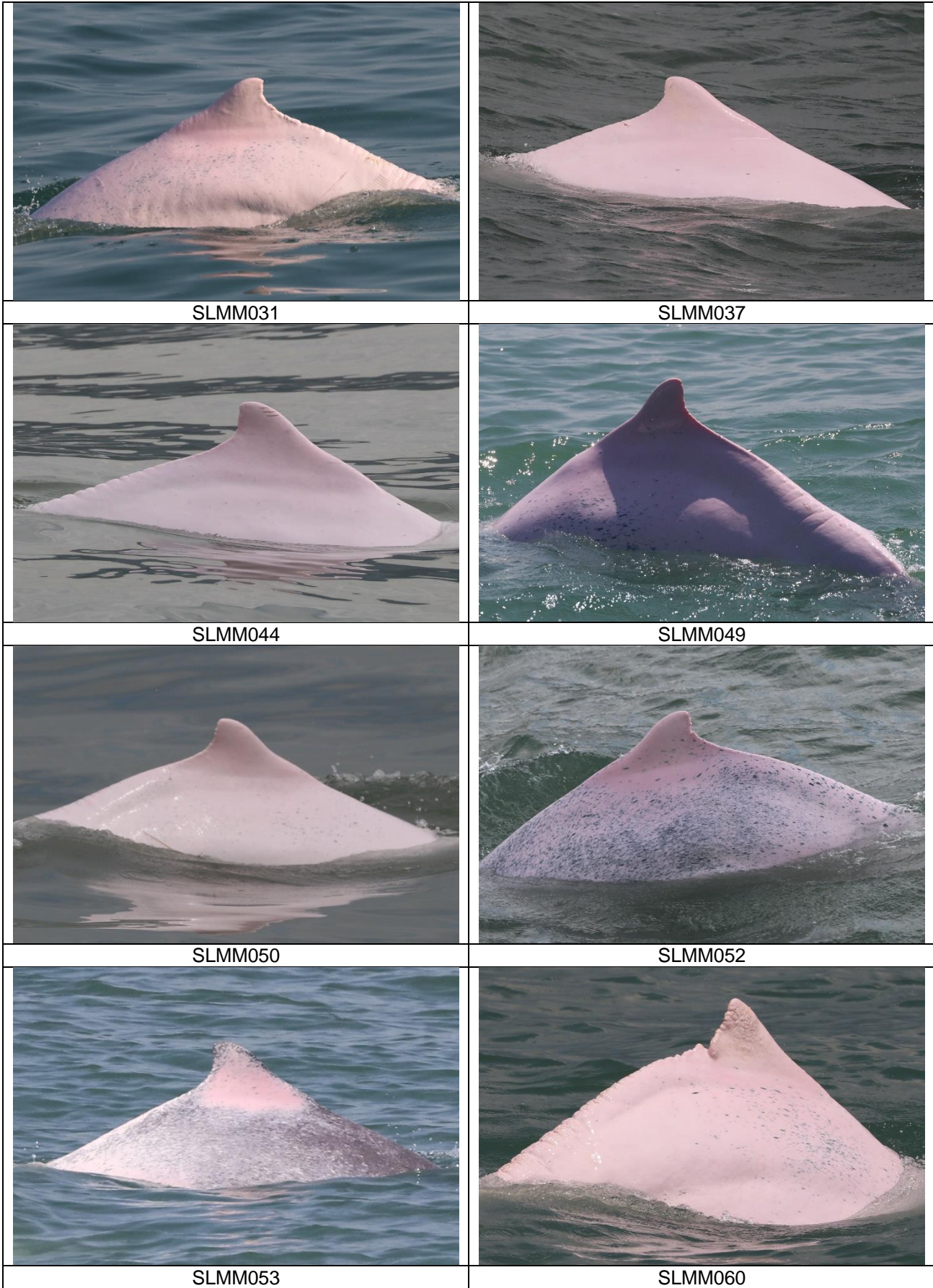
	
NLMM001	NLMM004
	
NLMM006	NLMM013
	
NLMM016	NLMM018
	
NLMM019	NLMM020



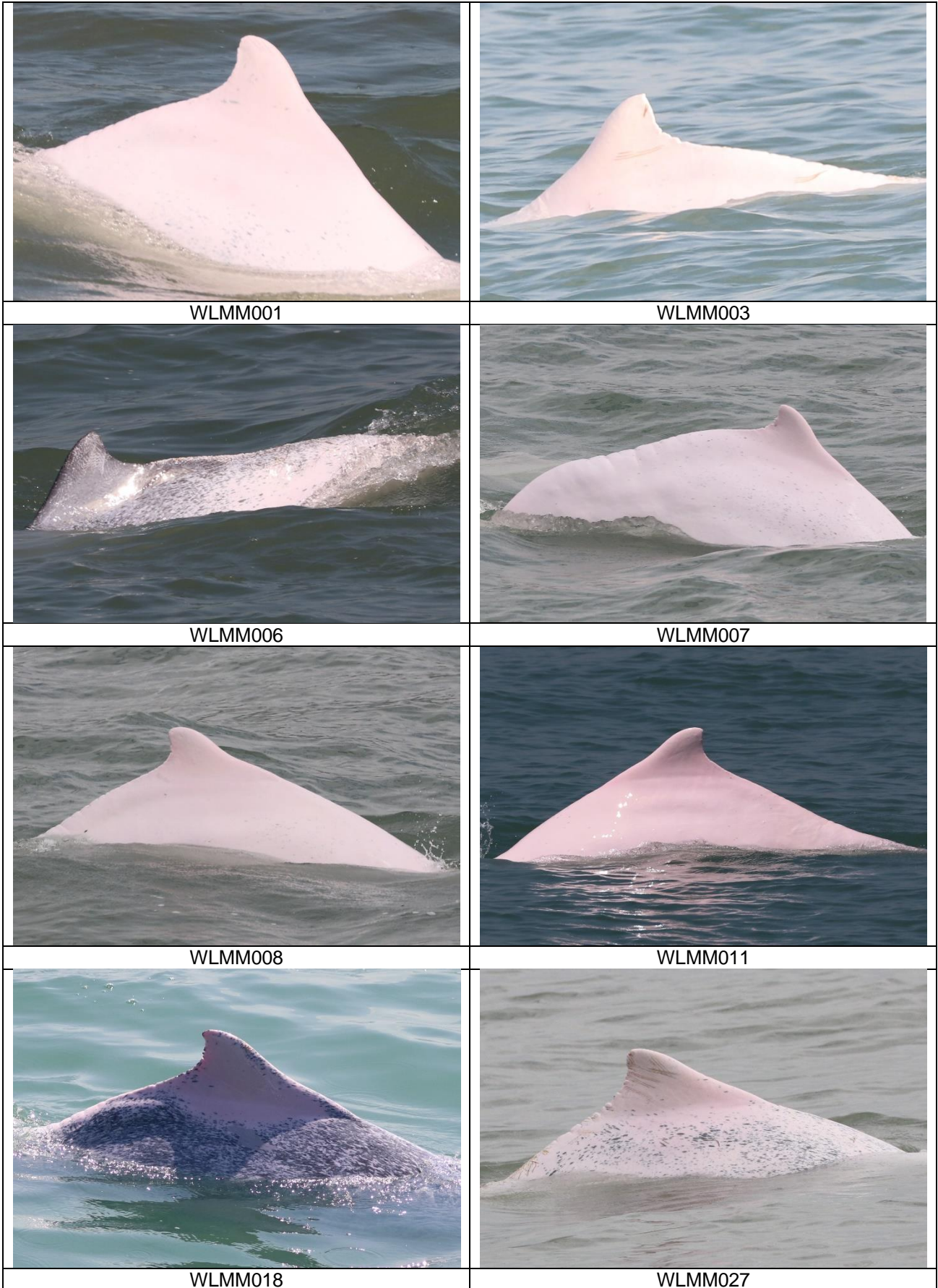














WLMM029



WLMM049



WLMM054



WLMM056



WLMM063



WLMM065











WLMM067



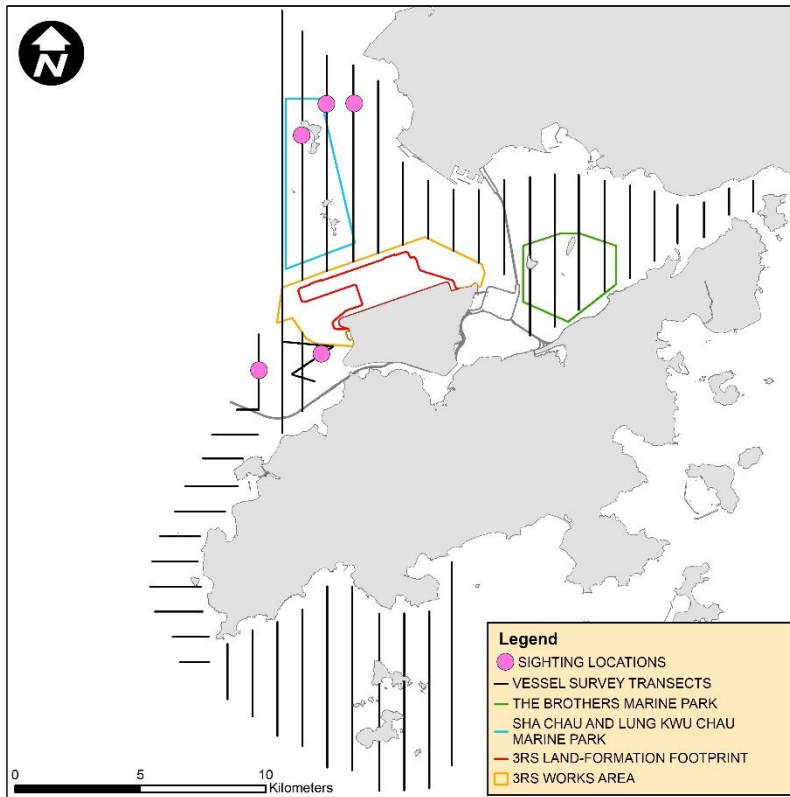
WLMM071



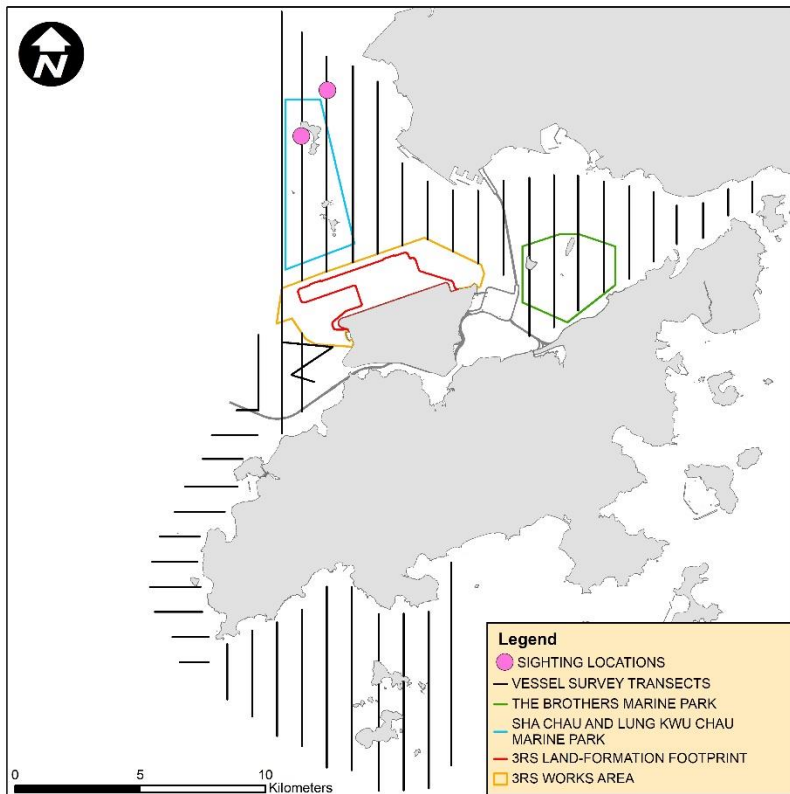
	
WLMM073	WLMM078
	
WLMM079	WLMM104
	
WLMM107	WLMM131
	
WLMM132 (Lower)	WLMM149 (Upper)

### Photo Identification – Re-sighting Locations

NLMM004

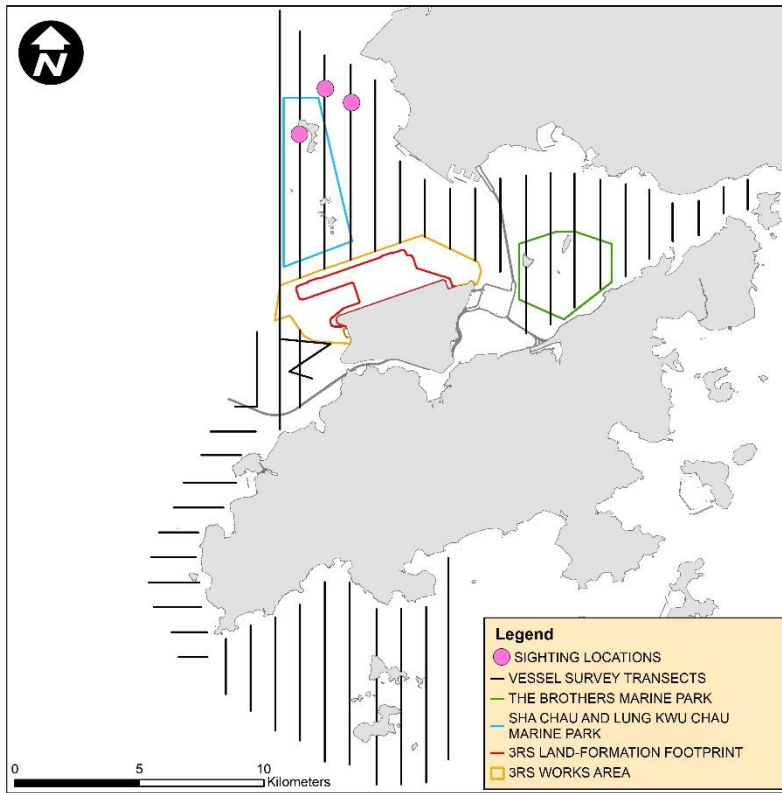


NLMM006

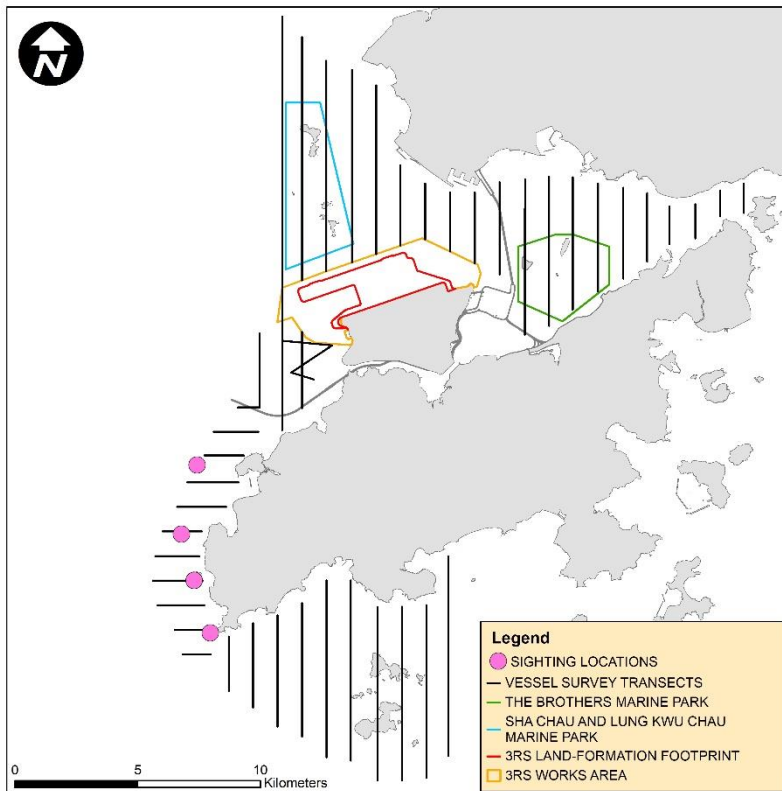




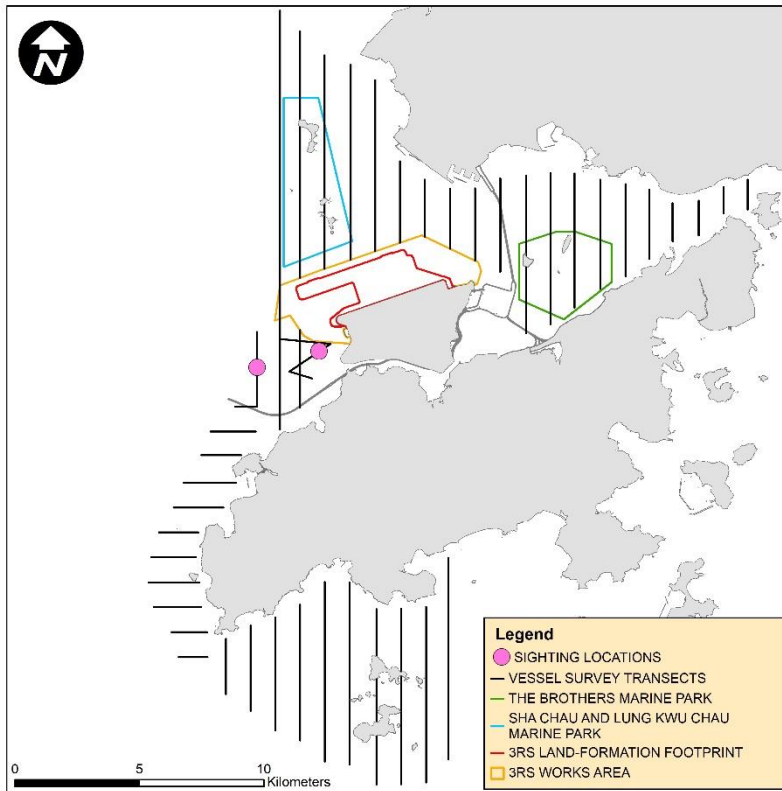
NLMM013



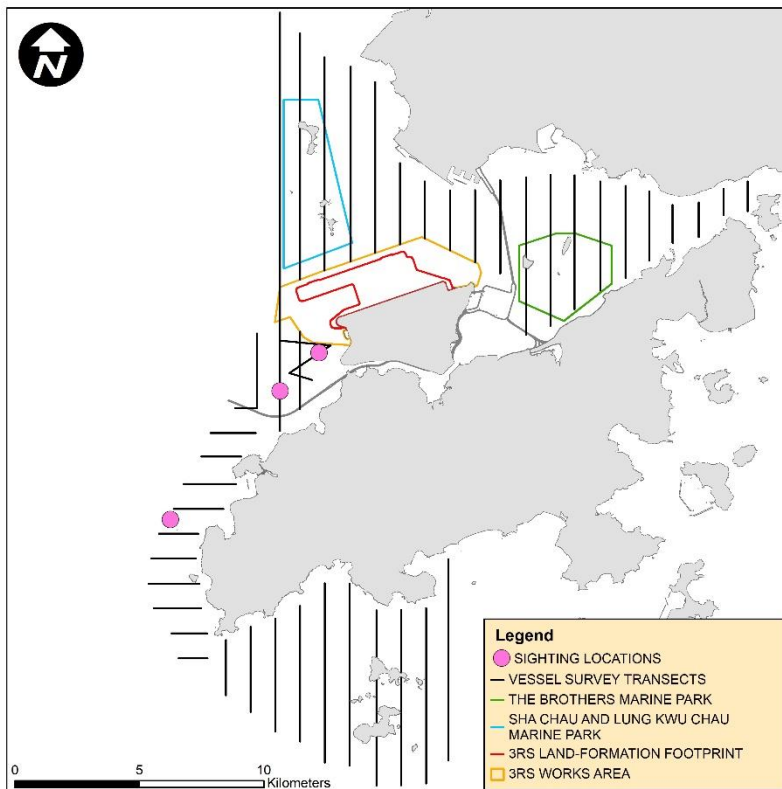
NLMM016



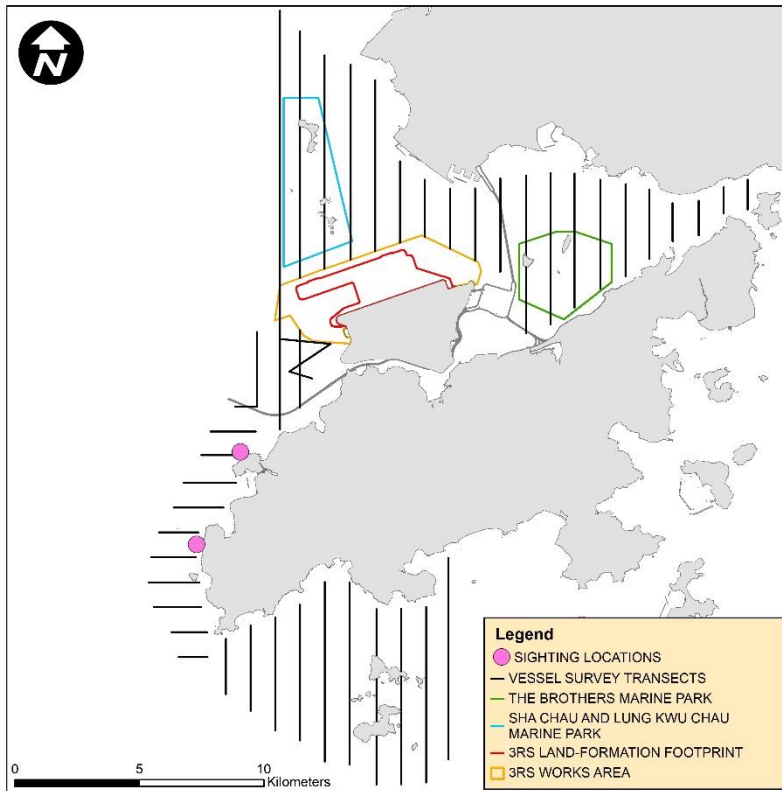
NLMM018



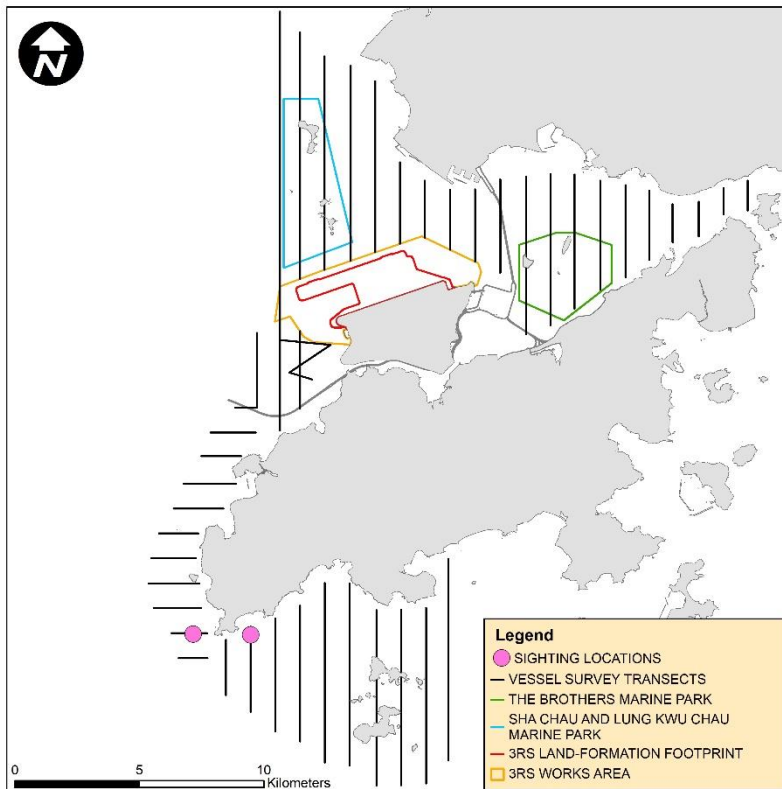
NLMM019



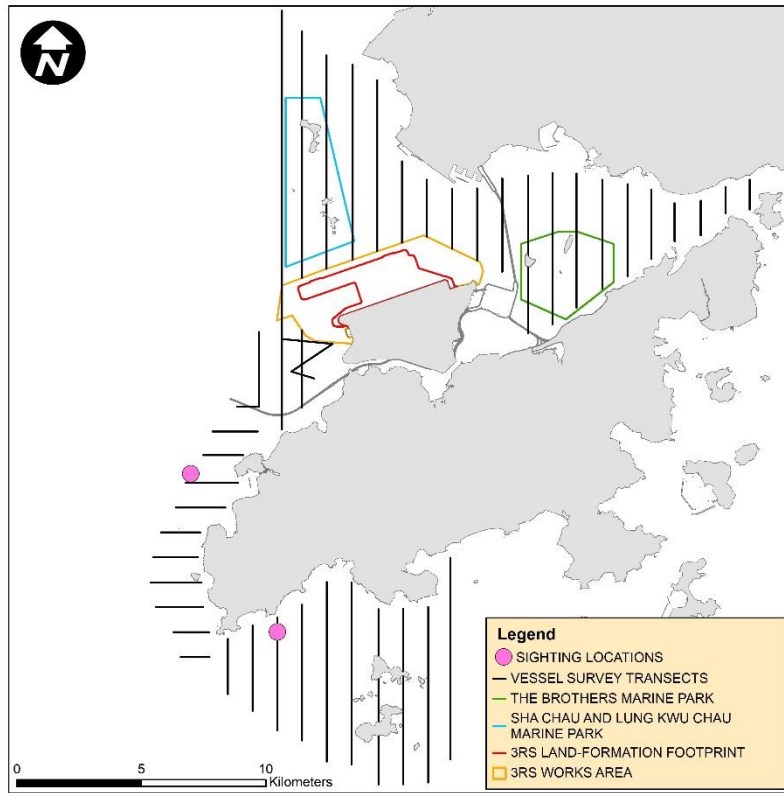
SLMM003



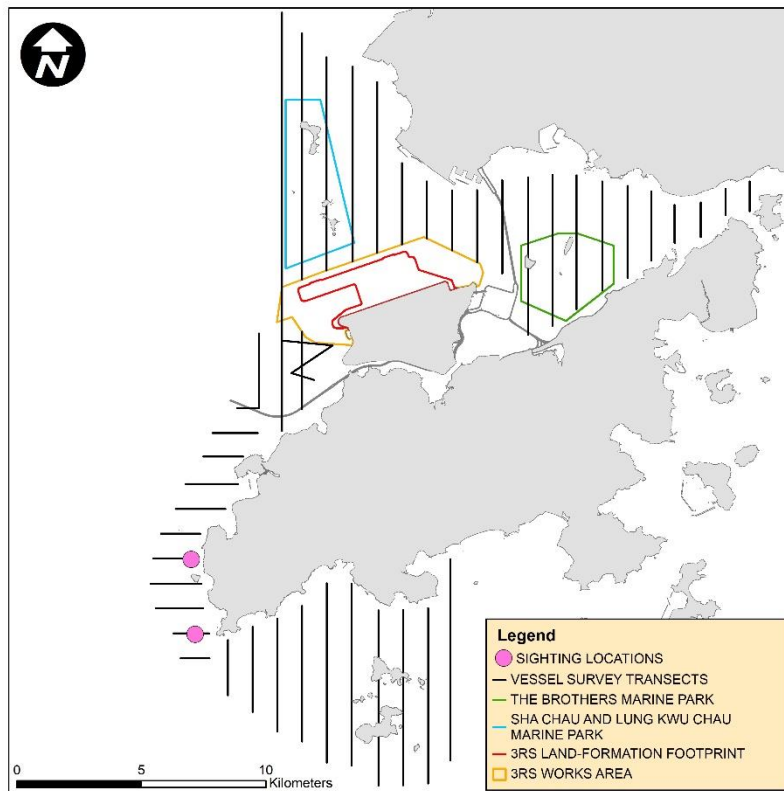
SLMM010



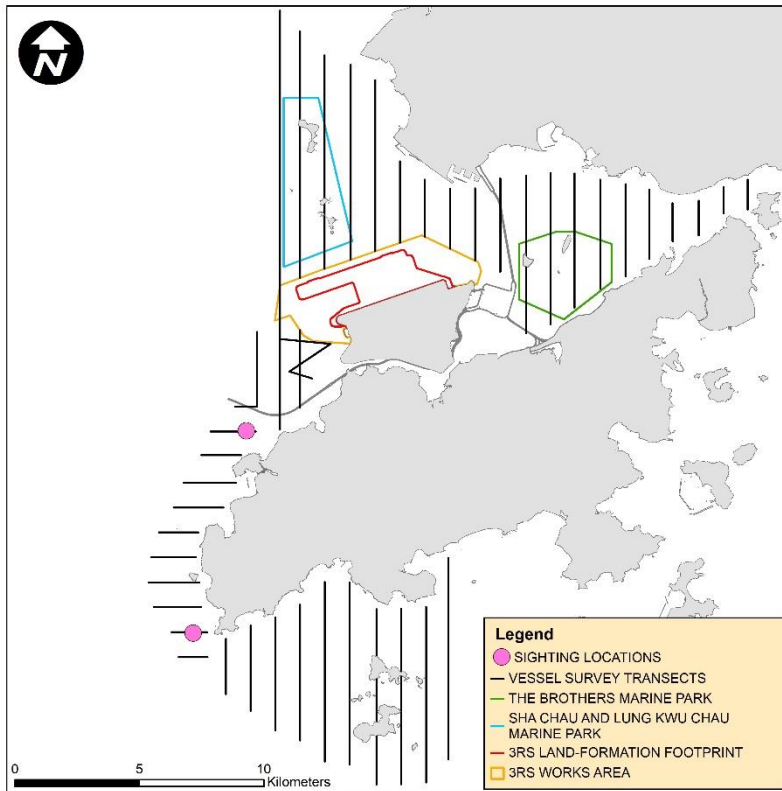
SLMM012



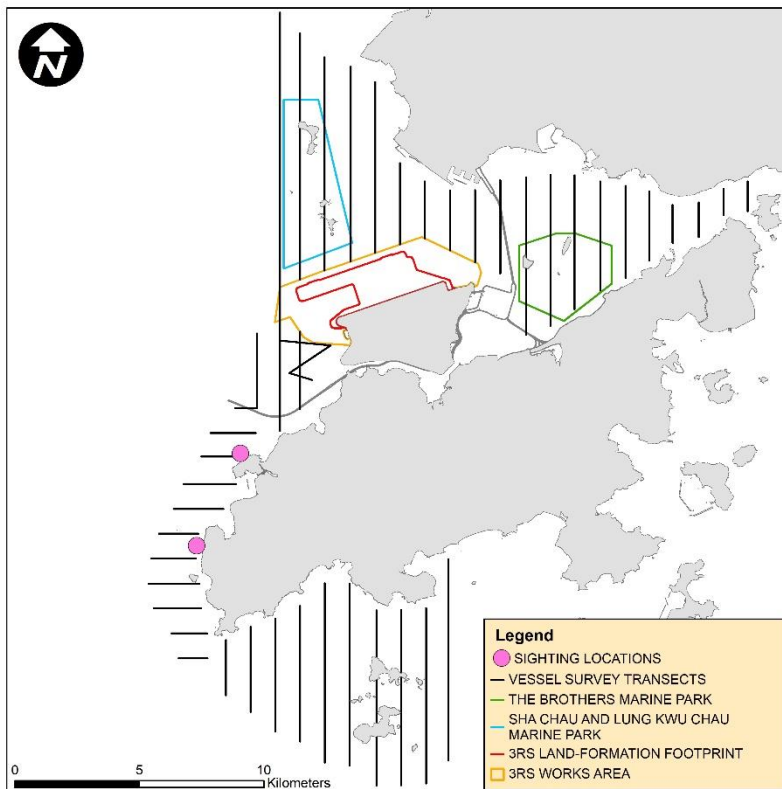
SLMM014



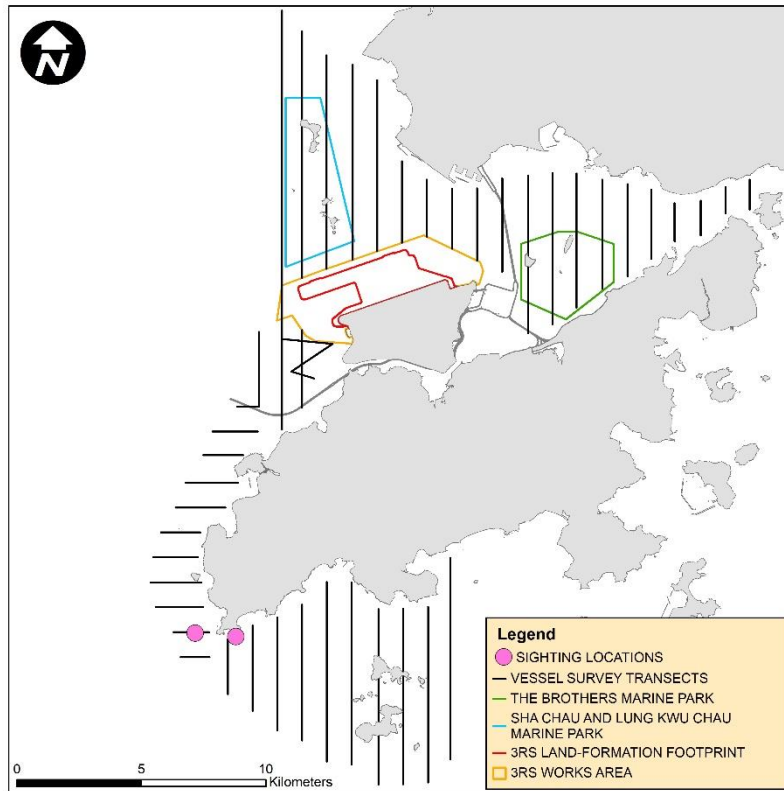
SLMM028



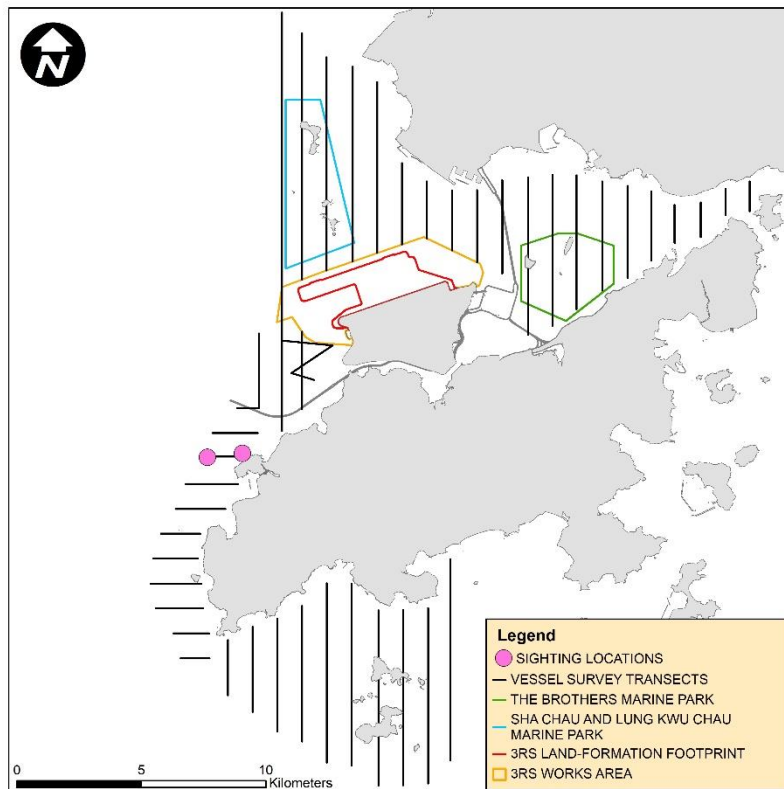
SLMM037



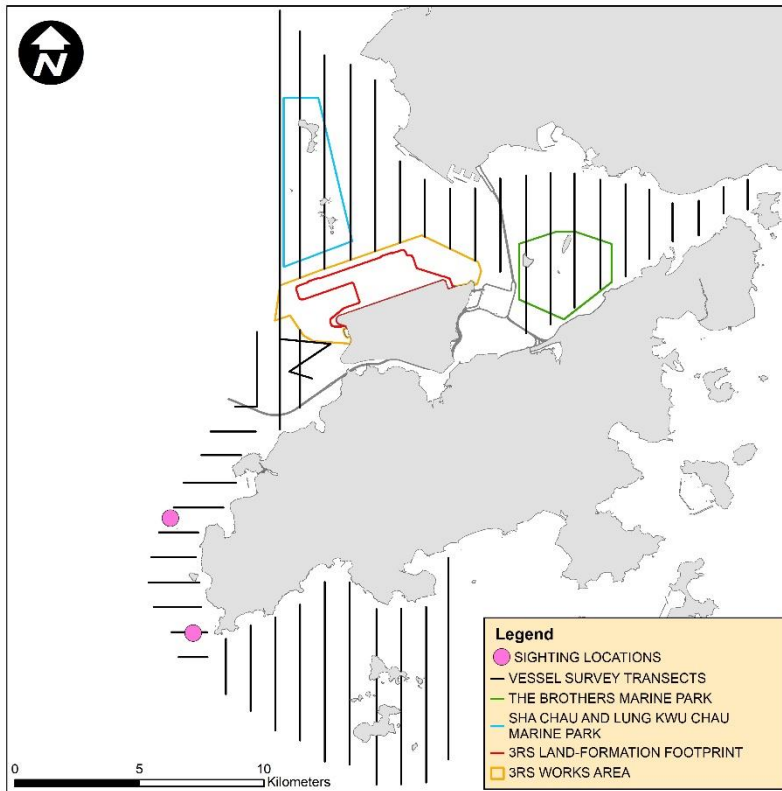
SLMM049



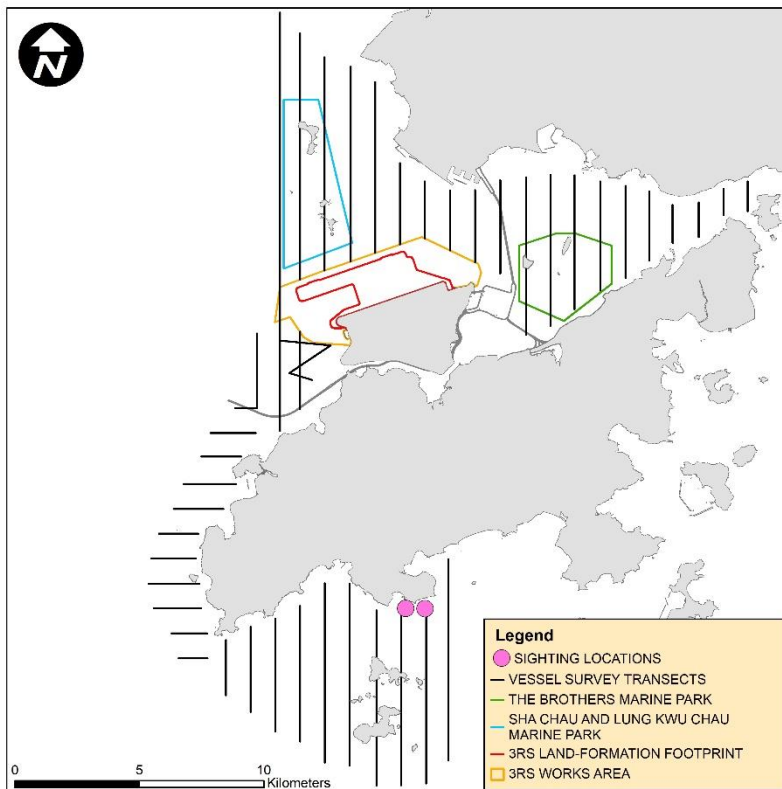
SLMM052



SLMM053

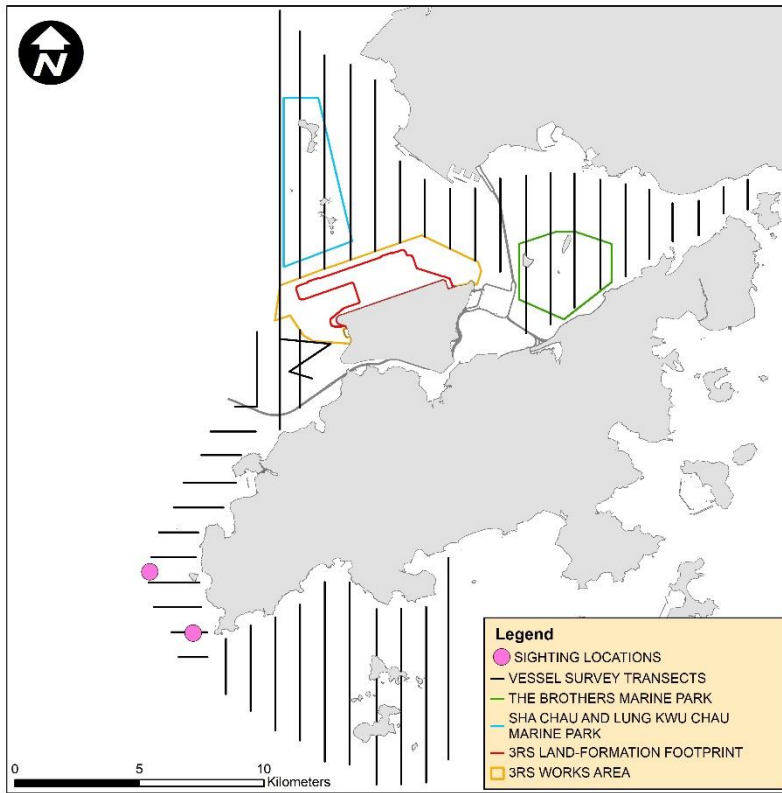


SLMM060

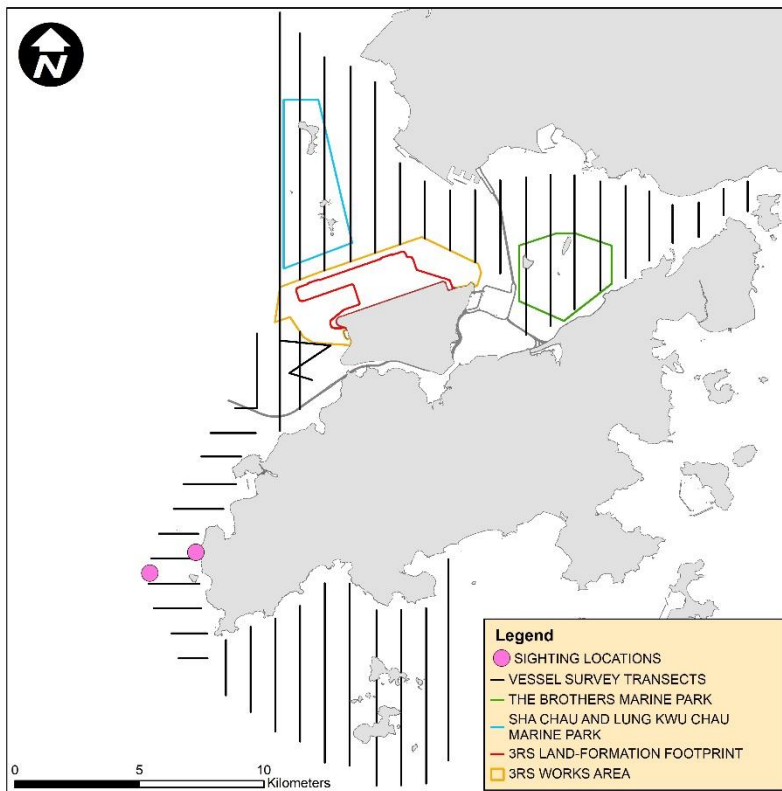




WLMM007

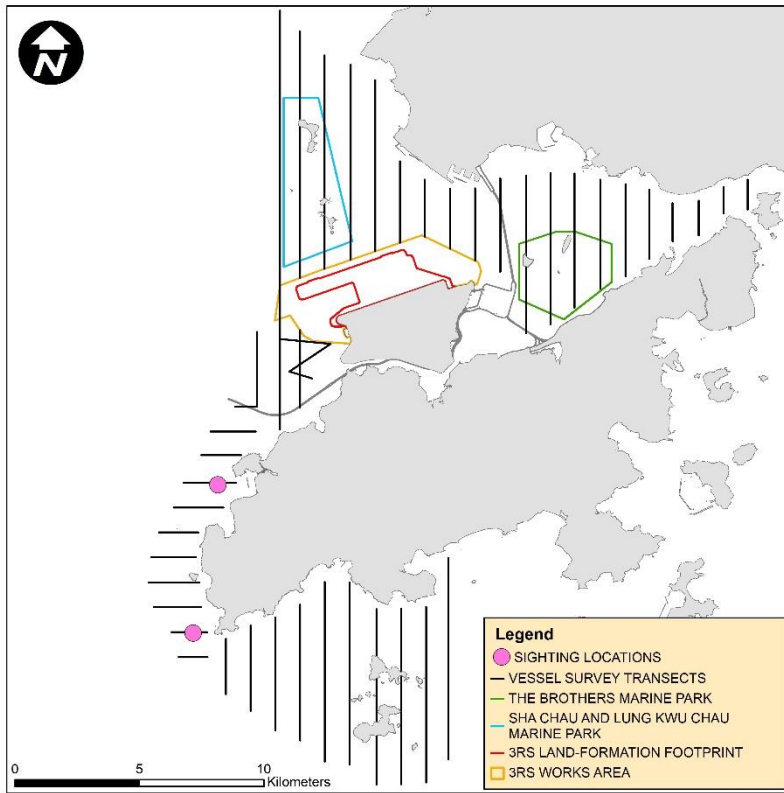


WLMM008

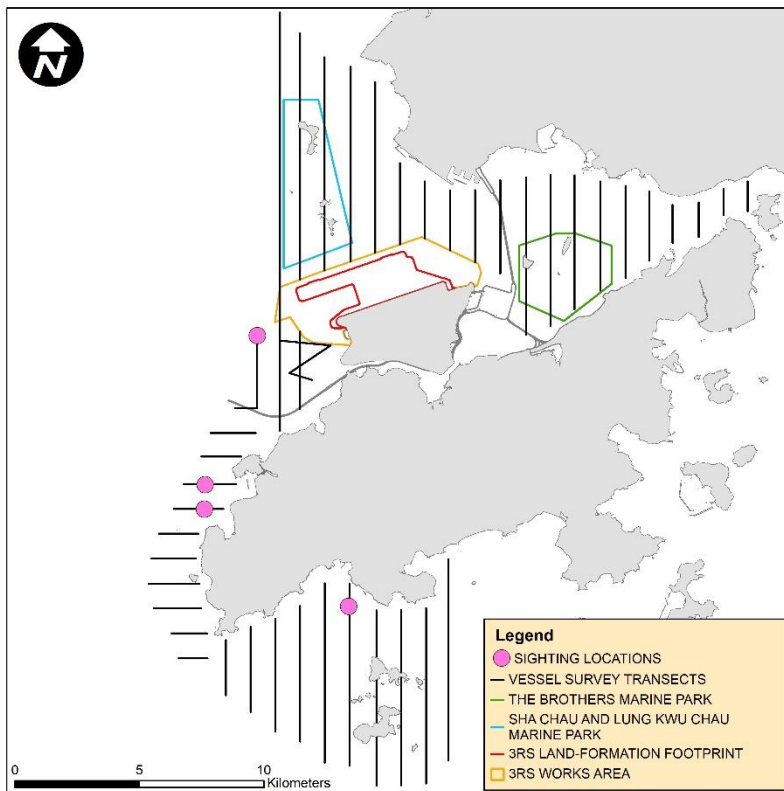




WLMM029



WLMM054



**CWD Land-based Theodolite Tracking****CWD Groups by Survey Date**

Date	Station	Start	End	Duration	Beaufort	Visibility	No. of Focal Follow	Dolphin Group Size
11/Oct/19	Lung Kwu Chau	9:21	15:21	6:00	2-3	3	1	1
21/Oct/19	Lung Kwu Chau	8:45	14:45	6:00	2	2-3	4	1-2
22/Oct/19	Sha Chau	8:40	14:40	6:00	2	2	0	-
12/Nov/19	Lung Kwu Chau	10:08	16:08	6:00	2-3	2-3	2	2-5
21/Nov/19	Lung Kwu Chau	8:56	14:56	6:00	3	3	0	0
28/Nov/19	Sha Chau	8:55	14:55	6:00	2-3	2	0	-
11/Dec/19	Lung Kwu Chau	9:10	15:10	6:00	2-3	3	1	1
18/Dec/19	Lung Kwu Chau	9:00	15:00	6:00	1-2	2	2	1-5
30/Dec/19	Sha Chau	9:02	15:02	6:00	2-3	4	0	0

Visibility: 1=Excellent, 2=Good, 3=Fair, 4=Poor