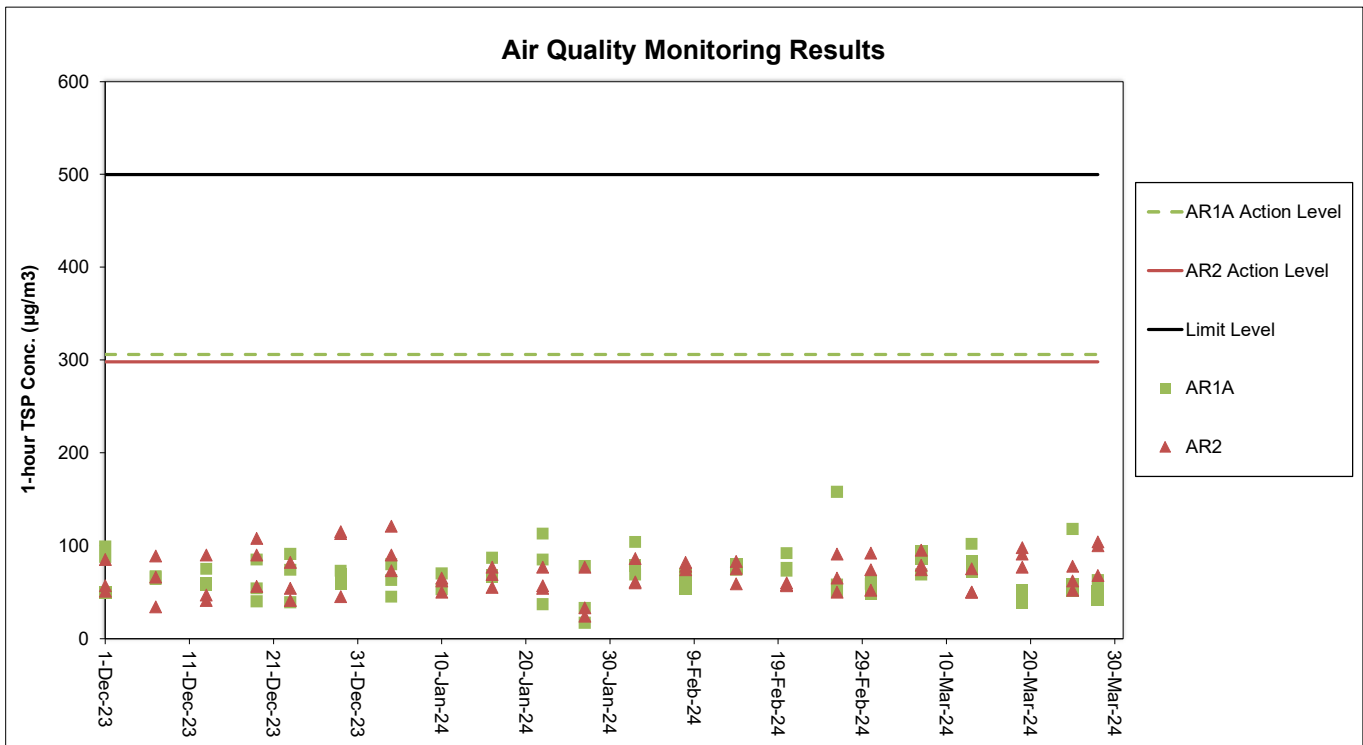


Appendix C. Monitoring Results

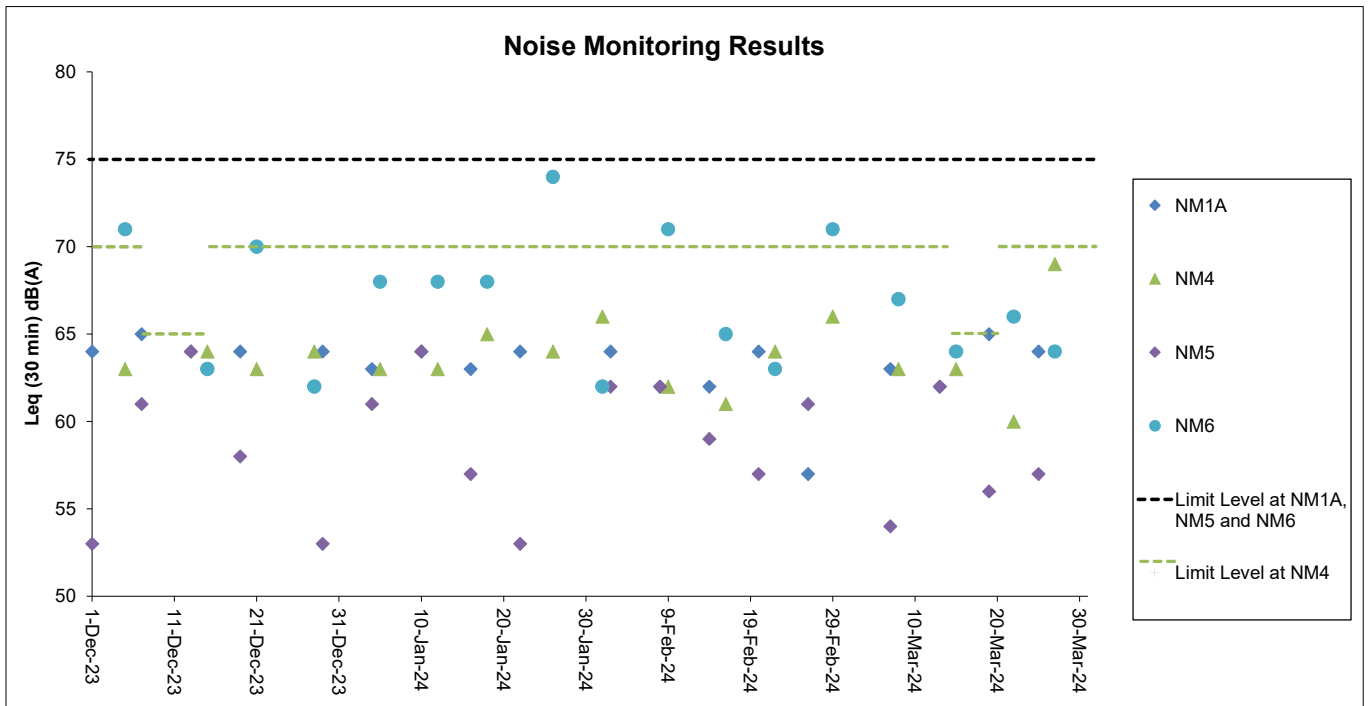
Air Quality Monitoring Results



Notes:

1. The key activities of the Project carried out in the reporting period included reclamation areas and existing airport island respectively. Works in the reclamation areas included rock armour laying works, land improvement works and filling works, pavement works, Terminal 2 Concourse superstructure works, tunnel work for Automated People Mover (APM) and Baggage Handling System (BHS) and associated works. Land-based works on existing airport island involved Terminal 2 expansion works, modification and tunnel work for APM and BHS, utilities works, road and drainage works, demolition, piling, excavation works and 132kV cable laying works.
2. General weather condition during monitoring ranged from sunny to rainy. Detailed meteorological conditions can be referred to Table 2.3 of this Report and corresponding Monthly EM&A Reports.
3. QA/ QC requirements as stipulated in the EM&A Manual were carried out during measurement.

Noise Monitoring Results



Notes:

1. The Limit Level is reduced to 70dB(A) for school and 65dB(A) during school examination period at NM4. School examination took place from 14 to 20 March during this reporting period.
2. The key activities of the Project carried out in the reporting period included reclamation areas and existing airport island respectively. Works in the reclamation areas included rock armour laying works, land improvement works and filling works, pavement works, Terminal 2 Concourse superstructure works, tunnel work for Automated People Mover (APM) and Baggage Handling System (BHS) and associated works. Land-based works on existing airport island involved Terminal 2 expansion works, modification and tunnel work for APM and BHS, utilities works, road and drainage works, demolition, piling, excavation works and 132kV cable laying works.
3. General weather condition during monitoring ranged from sunny to rainy. Detailed meteorological conditions can be referred to Table 2.6 of this Report and corresponding Monthly EM&A Reports.
4. QA/ QC requirements as stipulated in the EM&A Manual were carried out during measurement.

Chinese White Dolphin Monitoring Results

CWD Small Vessel Line-transect Survey

Survey Effort Data

DATE	AREA	BEAU	KM SEARCHED	SEASON	VESSEL	TYPE	P/S
09-Jan-24	NEL	1	3.74	WINTER	32166	3RS ET – POST	P
09-Jan-24	NEL	2	13.5	WINTER	32166	3RS ET – POST	P
09-Jan-24	NEL	3	19.9	WINTER	32166	3RS ET – POST	P
09-Jan-24	NEL	2	5.76	WINTER	32166	3RS ET – POST	S
09-Jan-24	NEL	3	4.1	WINTER	32166	3RS ET – POST	S
10-Jan-24	NEL	2	25.76	WINTER	32166	3RS ET – POST	P
10-Jan-24	NEL	3	11.5	WINTER	32166	3RS ET – POST	P
10-Jan-24	NEL	2	7.4	WINTER	32166	3RS ET – POST	S
10-Jan-24	NEL	3	1.84	WINTER	32166	3RS ET – POST	S
11-Jan-24	NWL	2	16.7	WINTER	32166	3RS ET – POST	P
11-Jan-24	NWL	3	47.1	WINTER	32166	3RS ET – POST	P
11-Jan-24	NWL	2	4.3	WINTER	32166	3RS ET – POST	S
11-Jan-24	NWL	3	7.4	WINTER	32166	3RS ET – POST	S
15-Jan-24	AW	2	4.96	WINTER	32166	3RS ET – POST	P
15-Jan-24	WL	2	13.6	WINTER	32166	3RS ET – POST	P
15-Jan-24	WL	3	2.16	WINTER	32166	3RS ET – POST	P
15-Jan-24	WL	2	6.115	WINTER	32166	3RS ET – POST	S
15-Jan-24	WL	3	2.73	WINTER	32166	3RS ET – POST	S
18-Jan-24	SWL	2	39.882	WINTER	32166	3RS ET – POST	P
18-Jan-24	SWL	3	13.265	WINTER	32166	3RS ET – POST	P
18-Jan-24	SWL	2	14.298	WINTER	32166	3RS ET – POST	S
18-Jan-24	SWL	3	2.155	WINTER	32166	3RS ET – POST	S
22-Jan-24	AW	3	4.52	WINTER	32166	3RS ET – POST	P
22-Jan-24	WL	3	10.76	WINTER	32166	3RS ET – POST	P
22-Jan-24	WL	4	9.3	WINTER	32166	3RS ET – POST	P
22-Jan-24	WL	3	6.24	WINTER	32166	3RS ET – POST	S
22-Jan-24	WL	4	4.2	WINTER	32166	3RS ET – POST	S
23-Jan-24	SWL	3	20.21	WINTER	32166	3RS ET – POST	P
23-Jan-24	SWL	4	33.08	WINTER	32166	3RS ET – POST	P
23-Jan-24	SWL	3	8.07	WINTER	32166	3RS ET – POST	S
23-Jan-24	SWL	4	7.82	WINTER	32166	3RS ET – POST	S
25-Jan-24	NWL	2	7.01	WINTER	32166	3RS ET – POST	P
25-Jan-24	NWL	3	56.29	WINTER	32166	3RS ET – POST	P
25-Jan-24	NWL	2	1.1	WINTER	32166	3RS ET – POST	S
25-Jan-24	NWL	3	10.4	WINTER	32166	3RS ET – POST	S
02-Feb-24	AW	1	4.56	WINTER	32166	3RS ET – POST	P
02-Feb-24	WL	2	17.302	WINTER	32166	3RS ET – POST	P
02-Feb-24	WL	2	11.421	WINTER	32166	3RS ET – POST	S
14-Feb-24	SWL	2	13.69	WINTER	32166	3RS ET – POST	P
14-Feb-24	SWL	3	41.49	WINTER	32166	3RS ET – POST	P
14-Feb-24	SWL	2	5.56	WINTER	32166	3RS ET – POST	S
14-Feb-24	SWL	3	10	WINTER	32166	3RS ET – POST	S
15-Feb-24	SWL	2	38.098	WINTER	32166	3RS ET – POST	P
15-Feb-24	SWL	3	15.36	WINTER	32166	3RS ET – POST	P
15-Feb-24	SWL	2	12.055	WINTER	32166	3RS ET – POST	S

DATE	AREA	BEAU	KM SEARCHED	SEASON	VESSEL	TYPE	P/S
15-Feb-24	SWL	3	4.035	WINTER	32166	3RS ET – POST	S
19-Feb-24	AW	2	4.61	WINTER	32166	3RS ET – POST	P
19-Feb-24	WL	2	9.565	WINTER	32166	3RS ET – POST	P
19-Feb-24	WL	3	9.77	WINTER	32166	3RS ET – POST	P
19-Feb-24	WL	2	2.21	WINTER	32166	3RS ET – POST	S
19-Feb-24	WL	3	8.195	WINTER	32166	3RS ET – POST	S
20-Feb-24	NWL	3	51	WINTER	32166	3RS ET – POST	P
20-Feb-24	NWL	4	13.2	WINTER	32166	3RS ET – POST	P
20-Feb-24	NWL	3	7.5	WINTER	32166	3RS ET – POST	S
20-Feb-24	NWL	4	3.8	WINTER	32166	3RS ET – POST	S
21-Feb-24	NWL	2	58.4	WINTER	32166	3RS ET – POST	P
21-Feb-24	NWL	3	5.3	WINTER	32166	3RS ET – POST	P
21-Feb-24	NWL	2	9.7	WINTER	32166	3RS ET – POST	S
21-Feb-24	NWL	3	1.7	WINTER	32166	3RS ET – POST	S
22-Feb-24	NEL	2	7.55	WINTER	32166	3RS ET – POST	P
22-Feb-24	NEL	3	29.15	WINTER	32166	3RS ET – POST	P
22-Feb-24	NEL	2	1.7	WINTER	32166	3RS ET – POST	S
22-Feb-24	NEL	3	8.6	WINTER	32166	3RS ET – POST	S
29-Feb-24	NEL	2	15.31	WINTER	32166	3RS ET – POST	P
29-Feb-24	NEL	3	21.95	WINTER	32166	3RS ET – POST	P
29-Feb-24	NEL	2	2.84	WINTER	32166	3RS ET – POST	S
29-Feb-24	NEL	3	6.8	WINTER	32166	3RS ET – POST	S
04-Mar-24	NEL	2	2.3	SPRING	32166	3RS ET – POST	P
04-Mar-24	NEL	3	34.85	SPRING	32166	3RS ET – POST	P
04-Mar-24	NEL	3	10.05	SPRING	32166	3RS ET – POST	S
05-Mar-24	SWL	2	39.66	SPRING	32166	3RS ET – POST	P
05-Mar-24	SWL	3	13.9	SPRING	32166	3RS ET – POST	P
05-Mar-24	SWL	2	15.44	SPRING	32166	3RS ET – POST	S
05-Mar-24	SWL	3	0.8	SPRING	32166	3RS ET – POST	S
07-Mar-24	NEL	2	33.7	SPRING	32166	3RS ET – POST	P
07-Mar-24	NEL	3	3.5	SPRING	32166	3RS ET – POST	P
07-Mar-24	NEL	2	7.7	SPRING	32166	3RS ET – POST	S
07-Mar-24	NEL	3	2.1	SPRING	32166	3RS ET – POST	S
18-Mar-24	SWL	2	18.57	SPRING	32166	3RS ET – POST	P
18-Mar-24	SWL	3	35.5	SPRING	32166	3RS ET – POST	P
18-Mar-24	SWL	2	3.86	SPRING	32166	3RS ET – POST	S
18-Mar-24	SWL	3	11.6	SPRING	32166	3RS ET – POST	S
19-Mar-24	AW	3	4.67	SPRING	32166	3RS ET – POST	P
19-Mar-24	WL	3	8.9	SPRING	32166	3RS ET – POST	P
19-Mar-24	WL	4	10.4	SPRING	32166	3RS ET – POST	P
19-Mar-24	WL	3	6.9	SPRING	32166	3RS ET – POST	S
19-Mar-24	WL	4	5.1	SPRING	32166	3RS ET – POST	S
20-Mar-24	NWL	2	32.1	SPRING	32166	3RS ET – POST	P
20-Mar-24	NWL	3	31.6	SPRING	32166	3RS ET – POST	P
20-Mar-24	NWL	2	5.5	SPRING	32166	3RS ET – POST	S
20-Mar-24	NWL	3	6.5	SPRING	32166	3RS ET – POST	S
21-Mar-24	NWL	2	9.03	SPRING	32166	3RS ET – POST	P

DATE	AREA	BEAU	KM SEARCHED	SEASON	VESSEL	TYPE	P/S
21-Mar-24	NWL	3	52.47	SPRING	32166	3RS ET – POST	P
21-Mar-24	NWL	2	2.6	SPRING	32166	3RS ET – POST	S
21-Mar-24	NWL	3	10.9	SPRING	32166	3RS ET – POST	S
22-Mar-24	AW	2	3.52	SPRING	32166	3RS ET – POST	P
22-Mar-24	AW	3	1.04	SPRING	32166	3RS ET – POST	P
22-Mar-24	WL	3	13.513	SPRING	32166	3RS ET – POST	P
22-Mar-24	WL	4	5.24	SPRING	32166	3RS ET – POST	P
22-Mar-24	WL	2	0.36	SPRING	32166	3RS ET – POST	S
22-Mar-24	WL	3	5.536	SPRING	32166	3RS ET – POST	S
22-Mar-24	WL	4	3.641	SPRING	32166	3RS ET – POST	S

CWD Small Vessel Line-transect Survey

Sighting Data

DATE	STG #	TIME	CWD/FP	GP SZ	AREA	BEAU	PSD	EFFORT	TYPE	DEC LAT	DEC LON	SEASON	BOAT ASSOC.	P/S
15-Jan-24	1	0940	CWD	1	AW	2	352	ON	3RS ET – POST	22.292622	113.877200	WINTER	NONE	P
15-Jan-24	2	1021	CWD	2	WL	2	360	ON	3RS ET – POST	22.292990	113.861105	WINTER	GILLNETTER	P
15-Jan-24	3	1029	CWD	3	WL	2	287	ON	3RS ET – POST	22.287891	113.861267	WINTER	NONE	P
15-Jan-24	4	1058	CWD	5	WL	2	75	ON	3RS ET – POST	22.265100	113.858033	WINTER	NONE	S
15-Jan-24	5	1143	CWD	2	WL	2	245	ON	3RS ET – POST	22.242110	113.846385	WINTER	NONE	S
15-Jan-24	6	1221	CWD	7	WL	2	464	ON	3RS ET – POST	22.239483	113.827531	WINTER	NONE	S
15-Jan-24	7	1302	CWD	4	WL	2	210	ON	3RS ET – POST	22.223289	113.829118	WINTER	NONE	P
15-Jan-24	8	1330	CWD	4	WL	3	150	ON	3RS ET – POST	22.204811	113.830395	WINTER	NONE	P
18-Jan-24	1	1158	FP	1	SWL	2	72	ON	3RS ET – POST	22.146847	113.907946	WINTER	NONE	P
18-Jan-24	2	1257	FP	3	SWL	2	354	ON	3RS ET – POST	22.160461	113.897349	WINTER	NONE	P
18-Jan-24	3	1359	FP	1	SWL	3	121	ON	3RS ET – POST	22.161403	113.878597	WINTER	NONE	P
23-Jan-24	1	1115	FP	3	SWL	3	335	ON	3RS ET – POST	22.205558	113.922932	WINTER	NONE	S
23-Jan-24	2	1413	CWD	4	SWL	3	31	ON	3RS ET – POST	22.200251	113.865006	WINTER	NONE	S
23-Jan-24	3	1458	CWD	2	SWL	4	71	ON	3RS ET – POST	22.194506	113.850075	WINTER	NONE	P
02-Feb-24	1	0958	CWD	9	WL	2	209	ON	3RS ET – POST	22.298830	113.860690	WINTER	NONE	P
02-Feb-24	2	1048	CWD	1	WL	2	566	ON	3RS ET – POST	22.251552	113.833301	WINTER	NONE	S
02-Feb-24	3	1124	CWD	8	WL	2	38	ON	3RS ET – POST	22.231837	113.830160	WINTER	NONE	P
02-Feb-24	4	1155	CWD	1	WL	2	56	ON	3RS ET – POST	22.223477	113.827128	WINTER	NONE	P
14-Feb-24	1	1031	FP	3	SWL	2	139	ON	3RS ET – POST	22.187100	113.936056	WINTER	NONE	P
14-Feb-24	2	1119	FP	1	SWL	2	102	ON	3RS ET – POST	22.202507	113.926861	WINTER	NONE	P
14-Feb-24	3	1132	FP	2	SWL	2	76	ON	3RS ET – POST	22.188795	113.918641	WINTER	NONE	P
14-Feb-24	4	1149	FP	2	SWL	3	28	ON	3RS ET – POST	22.153483	113.917450	WINTER	NONE	P
15-Feb-24	1	1041	FP	3	SWL	2	59	ON	3RS ET – POST	22.164282	113.936414	WINTER	NONE	P
15-Feb-24	2	1044	FP	2	SWL	2	57	ON	3RS ET – POST	22.161875	113.936853	WINTER	NONE	P
15-Feb-24	3	1054	FP	5	SWL	2	141	ON	3RS ET – POST	22.145704	113.931314	WINTER	NONE	S
15-Feb-24	4	1148	FP	2	SWL	2	154	ON	3RS ET – POST	22.153818	113.917487	WINTER	NONE	P
15-Feb-24	5	1302	FP	1	SWL	2	64	ON	3RS ET – POST	22.155036	113.897925	WINTER	NONE	P
15-Feb-24	6	1321	FP	2	SWL	3	68	ON	3RS ET – POST	22.174237	113.888019	WINTER	NONE	P
19-Feb-24	1	1044	CWD	11	WL	3	141	ON	3RS ET – POST	22.242657	113.848215	WINTER	NONE	S
19-Feb-24	2	1159	CWD	2	WL	3	155	ON	3RS ET – POST	22.195691	113.840362	WINTER	NONE	P
18-Mar-24	1	1035	FP	5	SWL	2	62	ON	3RS ET – POST	22.183501	113.936303	SPRING	NONE	P

DATE	STG #	TIME	CWD/FP	GP SZ	AREA	BEAU	PSD	EFFORT	TYPE	DEC LAT	DEC LON	SEASON	BOAT ASSOC.	P/S
18-Mar-24	2	1041	FP	2	SWL	2	297	ON	3RS ET – POST	22.173528	113.936039	SPRING	NONE	P
18-Mar-24	3	1104	FP	4	SWL	2	213	ON	3RS ET – POST	22.159092	113.927456	SPRING	NONE	P
22-Mar-24	1	1027	CWD	1	WL	3	398	ON	3RS ET – POST	22.260790	113.853104	SPRING	NONE	S
22-Mar-24	2	1112	CWD	2	WL	3	58	ON	3RS ET – POST	22.231666	113.830900	SPRING	NONE	P
22-Mar-24	3	1128	CWD	4	WL	3	87	ON	3RS ET – POST	22.224179	113.835142	SPRING	NONE	P
22-Mar-24	4	1156	CWD	1	WL	3	148	ON	3RS ET – POST	22.220932	113.820006	SPRING	NONE	S
22-Mar-24	5	1213	CWD	1	WL	3	15	ON	3RS ET – POST	22.214444	113.833562	SPRING	NONE	P

Abbreviations: STG# = Sighting Number; GP SZ = Group Size; BEAU = Beaufort Sea State; PSD = Perpendicular Distance (in metres); N/A = Not Applicable; DEC LAT = Latitude (WGS84 in Decimal), DEC LON = Longitude (WGS84 in Decimal); BOAT ASSOC. = Fishing Boat Association; P/S = Primary Transect / Secondary Transect.

Sighting data of finless porpoise (FP) are presented for reference only. No relevant figure or text will be mentioned in the quarterly EM&A report. All FP sightings are excluded in calculation

CWD Small Vessel Line-transect Survey

Photo Identification



NLMM027



NLMM081



SLMM002



SLMM003



SLMM007



SLMM014



SLMM027



SLMM037



SLMM052



SLMM060



SLMM073



WLMM001



WLMM007



WLMM027



WLMM028



WLMM029



WLMM043



WLMM056



WLMM058



WLMM067



WLMM068



WLMM071



WLMM073



WLMM079



WLMM109



WLMM114



WLMM147 (Lower)



WLMM150



WLMM159



WLMM162



WLMM192

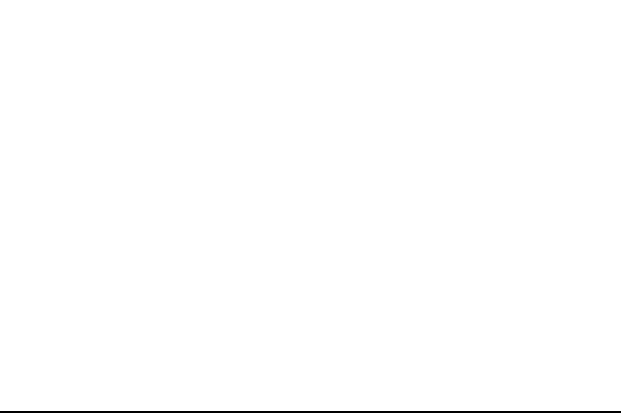
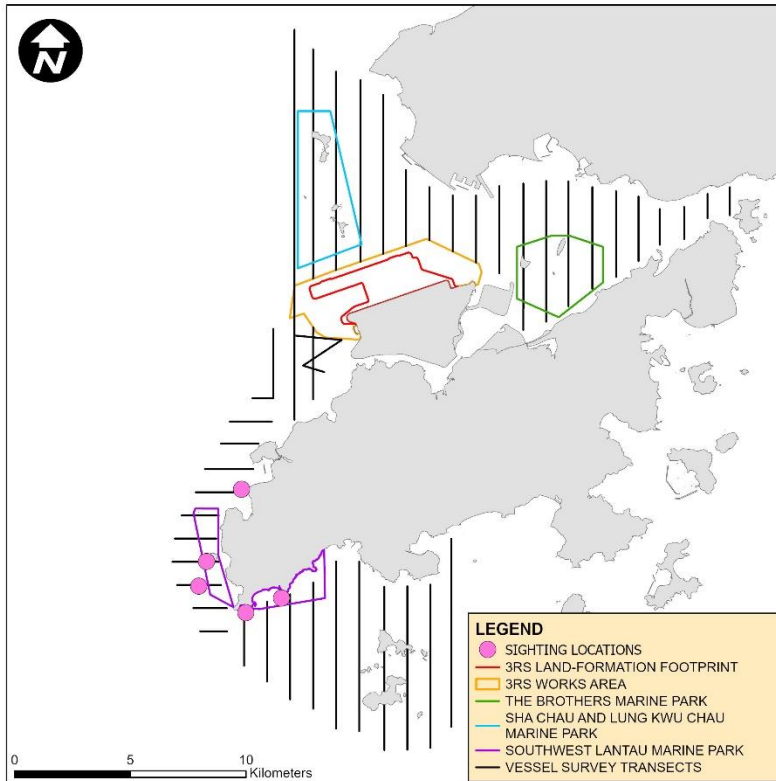
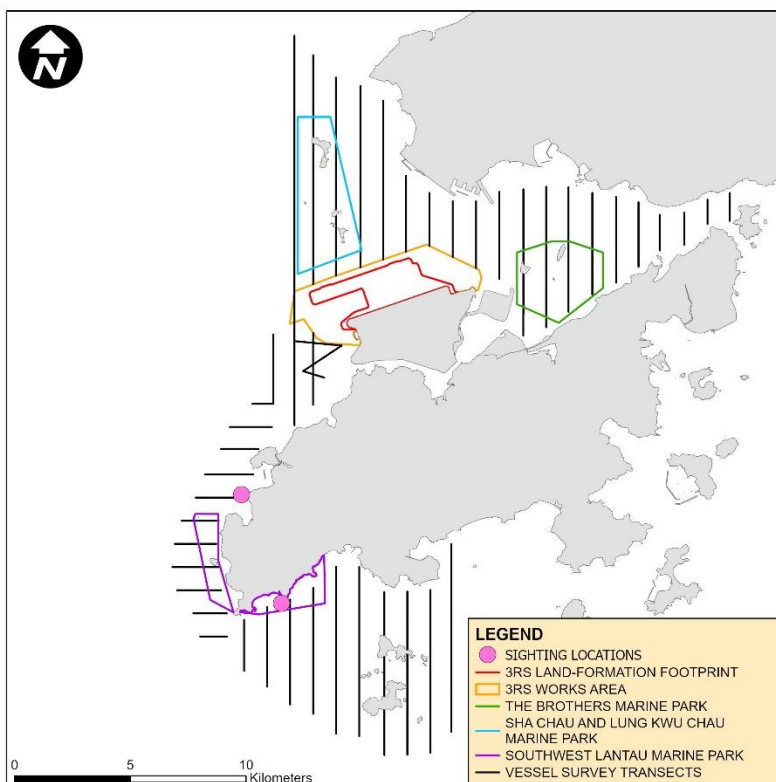


Photo Identification – Re-sighting Locations

SLMM003



WLMM056



WLMM114

