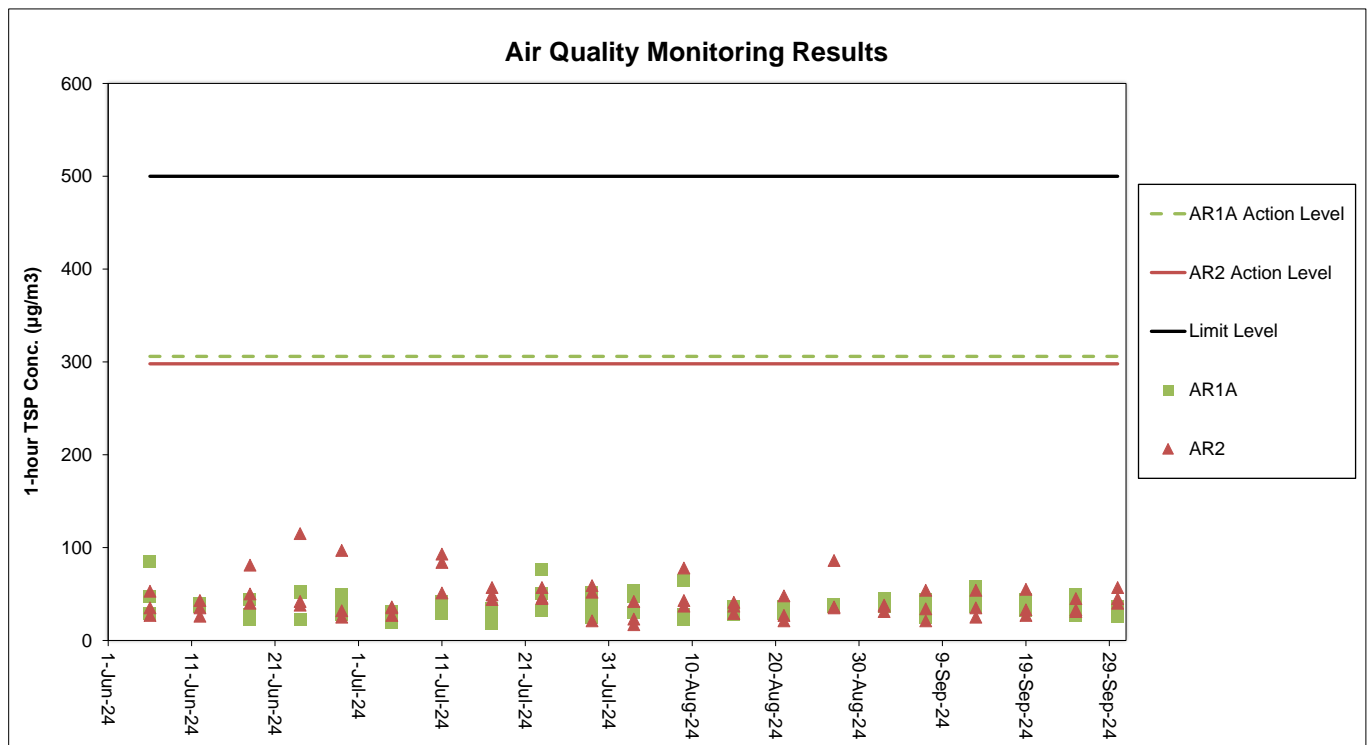


Appendix C. Monitoring Results

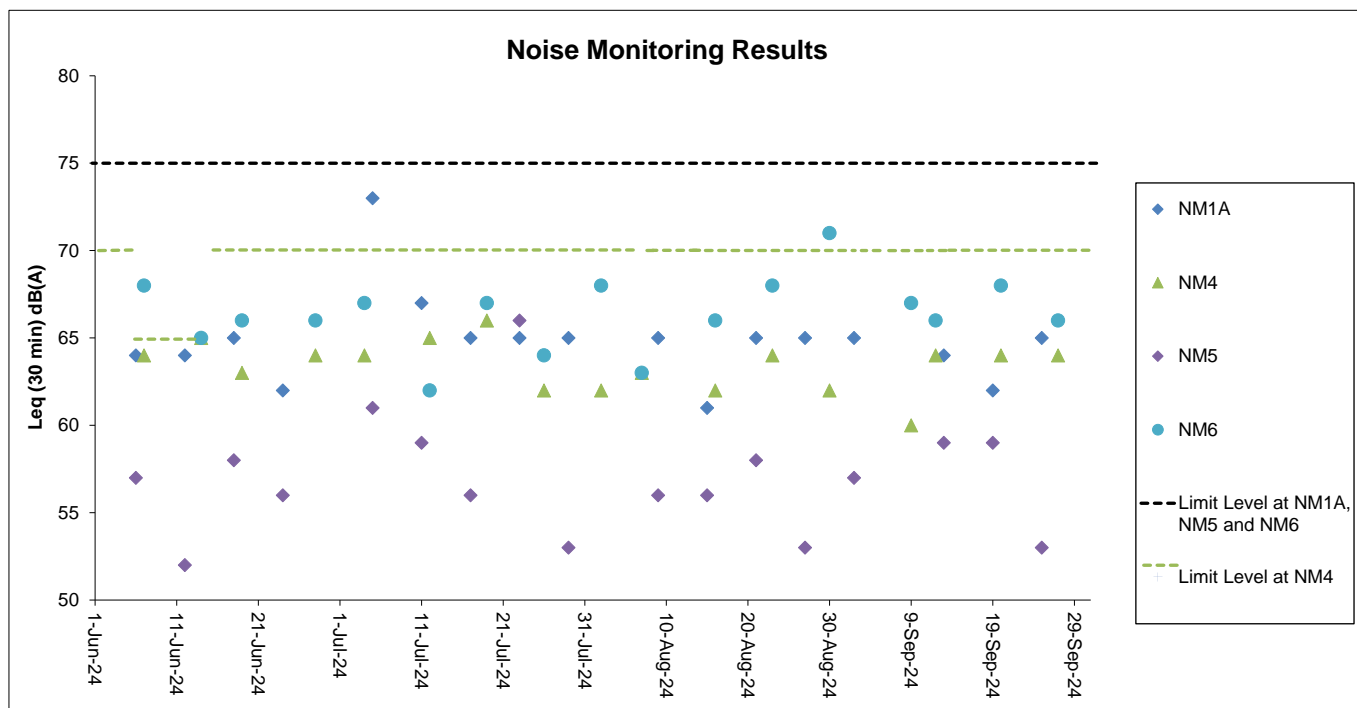
Air Quality Monitoring Results



Notes:

1. The key activities of the Project carried out in the reporting period included reclamation areas and existing airport island respectively. Works in the reclamation areas included land improvement works and filling works, pavement works, superstructure works for Terminal 2 Concourse, tunnel works for Automated People Mover (APM) and Baggage Handling System (BHS) and associated works. Land-based works on existing airport island involved Terminal 2 (T2) expansion works, modification and tunnel works for APM and BHS, utilities works, road and drainage works, excavation works and 132kV cable laying works.
2. General weather condition during monitoring ranged from sunny to cloudy. Detailed meteorological conditions can be referred to Table 2.3 of this Report and corresponding Monthly EM&A Reports.
3. QA/ QC requirements as stipulated in the EM&A Manual were carried out during measurement.

Noise Monitoring Results



Notes:

1. The Limit Level is reduced to 70dB(A) for school and 65dB(A) during school examination period at NM4. No school examination took place during this reporting period.
2. The key activities of the Project carried out in the reporting period included reclamation areas and existing airport island respectively. Works in the reclamation areas included land improvement works and filling works, pavement works, superstructure works for Terminal 2 Concourse, tunnel works for Automated People Mover (APM) and Baggage Handling System (BHS) and associated works. Land-based works on existing airport island involved Terminal 2 (T2) expansion works, modification and tunnel works for APM and BHS, utilities works, road and drainage works, excavation works and 132kV cable laying works.
3. General weather condition during monitoring ranged from sunny to overcast. Detailed meteorological conditions can be referred to Table 2.6 of this Report and corresponding Monthly EM&A Reports.
4. QA/ QC requirements as stipulated in the EM&A Manual were carried out during measurement.

Chinese White Dolphin Monitoring Results

CWD Small Vessel Line-transect Survey

Survey Effort Data

DATE	AREA	BEAU	KM SEARCHED	SEASON	VESSEL	TYPE	P/S
09-Jul-24	SWL	2	42.763	SUMMER	32166	3RS ET – POST	P
09-Jul-24	SWL	3	6.35	SUMMER	32166	3RS ET – POST	P
09-Jul-24	SWL	2	13.392	SUMMER	32166	3RS ET – POST	S
09-Jul-24	SWL	3	1.21	SUMMER	32166	3RS ET – POST	S
10-Jul-24	AW	2	4.66	SUMMER	32166	3RS ET – POST	P
10-Jul-24	WL	2	7.824	SUMMER	32166	3RS ET – POST	P
10-Jul-24	WL	3	10.296	SUMMER	32166	3RS ET – POST	P
10-Jul-24	WL	2	3.226	SUMMER	32166	3RS ET – POST	S
10-Jul-24	WL	3	6.112	SUMMER	32166	3RS ET – POST	S
11-Jul-24	SWL	2	37.688	SUMMER	32166	3RS ET – POST	P
11-Jul-24	SWL	3	14.317	SUMMER	32166	3RS ET – POST	P
11-Jul-24	SWL	2	9.23	SUMMER	32166	3RS ET – POST	S
11-Jul-24	SWL	3	4.815	SUMMER	32166	3RS ET – POST	S
11-Jul-24	SWL	4	1.3	SUMMER	32166	3RS ET – POST	S
12-Jul-24	AW	2	4.77	SUMMER	32166	3RS ET – POST	P
12-Jul-24	WL	2	7.46	SUMMER	32166	3RS ET – POST	P
12-Jul-24	WL	3	10.856	SUMMER	32166	3RS ET – POST	P
12-Jul-24	WL	2	2.38	SUMMER	32166	3RS ET – POST	S
12-Jul-24	WL	3	6.849	SUMMER	32166	3RS ET – POST	S
15-Jul-24	NEL	2	36.94	SUMMER	32166	3RS ET – POST	P
15-Jul-24	NEL	2	9.76	SUMMER	32166	3RS ET – POST	S
16-Jul-24	NEL	2	28.37	SUMMER	32166	3RS ET – POST	P
16-Jul-24	NEL	3	5.2	SUMMER	32166	3RS ET – POST	P
16-Jul-24	NEL	4	3.29	SUMMER	32166	3RS ET – POST	P
16-Jul-24	NEL	2	9.06	SUMMER	32166	3RS ET – POST	S
16-Jul-24	NEL	3	0.9	SUMMER	32166	3RS ET – POST	S
18-Jul-24	NWL	2	4.9	SUMMER	32166	3RS ET – POST	P
18-Jul-24	NWL	3	55.8	SUMMER	32166	3RS ET – POST	P
18-Jul-24	NWL	4	3	SUMMER	32166	3RS ET – POST	P
18-Jul-24	NWL	2	0.9	SUMMER	32166	3RS ET – POST	S
18-Jul-24	NWL	3	10.4	SUMMER	32166	3RS ET – POST	S
31-Jul-24	NWL	2	3	SUMMER	32166	3RS ET – POST	P
31-Jul-24	NWL	3	37.1	SUMMER	32166	3RS ET – POST	P
31-Jul-24	NWL	4	23	SUMMER	32166	3RS ET – POST	P
31-Jul-24	NWL	3	8.2	SUMMER	32166	3RS ET – POST	S
31-Jul-24	NWL	4	3.1	SUMMER	32166	3RS ET – POST	S
07-Aug-24	SWL	2	52.07	SUMMER	32166	3RS ET – POST	P
07-Aug-24	SWL	2	15.46	SUMMER	32166	3RS ET – POST	S
08-Aug-24	SWL	2	11.51	SUMMER	32166	3RS ET – POST	P
08-Aug-24	SWL	3	42.32	SUMMER	32166	3RS ET – POST	P
08-Aug-24	SWL	2	2.4	SUMMER	32166	3RS ET – POST	S
08-Aug-24	SWL	3	12.57	SUMMER	32166	3RS ET – POST	S
12-Aug-24	NWL	2	11.6	SUMMER	32166	3RS ET – POST	P
12-Aug-24	NWL	3	52.5	SUMMER	32166	3RS ET – POST	P
12-Aug-24	NWL	2	6.7	SUMMER	32166	3RS ET – POST	S

DATE	AREA	BEAU	KM SEARCHED	SEASON	VESSEL	TYPE	P/S
12-Aug-24	NWL	3	5.1	SUMMER	32166	3RS ET – POST	S
13-Aug-24	AW	2	4.61	SUMMER	32166	3RS ET – POST	P
13-Aug-24	WL	2	16.055	SUMMER	32166	3RS ET – POST	P
13-Aug-24	WL	2	7.193	SUMMER	32166	3RS ET – POST	S
14-Aug-24	NWL	2	37.1	SUMMER	32166	3RS ET – POST	P
14-Aug-24	NWL	3	19.82	SUMMER	32166	3RS ET – POST	P
14-Aug-24	NWL	4	6.88	SUMMER	32166	3RS ET – POST	P
14-Aug-24	NWL	2	7.4	SUMMER	32166	3RS ET – POST	S
14-Aug-24	NWL	3	4.2	SUMMER	32166	3RS ET – POST	S
15-Aug-24	NEL	2	20.02	SUMMER	32166	3RS ET – POST	P
15-Aug-24	NEL	3	16.3	SUMMER	32166	3RS ET – POST	P
15-Aug-24	NEL	4	1.4	SUMMER	32166	3RS ET – POST	P
15-Aug-24	NEL	2	6.88	SUMMER	32166	3RS ET – POST	S
15-Aug-24	NEL	3	2	SUMMER	32166	3RS ET – POST	S
15-Aug-24	NEL	4	0.9	SUMMER	32166	3RS ET – POST	S
20-Aug-24	NEL	1	0.2	SUMMER	32166	3RS ET – POST	P
20-Aug-24	NEL	2	31.25	SUMMER	32166	3RS ET – POST	P
20-Aug-24	NEL	3	5.9	SUMMER	32166	3RS ET – POST	P
20-Aug-24	NEL	1	1.2	SUMMER	32166	3RS ET – POST	S
20-Aug-24	NEL	2	8.65	SUMMER	32166	3RS ET – POST	S
23-Aug-24	AW	2	5.13	SUMMER	32166	3RS ET – POST	P
23-Aug-24	WL	2	18.156	SUMMER	32166	3RS ET – POST	P
23-Aug-24	WL	2	9.121	SUMMER	32166	3RS ET – POST	S
03-Sep-24	SWL	1	4.098	SUMMER	32166	3RS ET – POST	P
03-Sep-24	SWL	2	36.22	SUMMER	32166	3RS ET – POST	P
03-Sep-24	SWL	3	9.82	SUMMER	32166	3RS ET – POST	P
03-Sep-24	SWL	1	1.123	SUMMER	32166	3RS ET – POST	S
03-Sep-24	SWL	2	8.545	SUMMER	32166	3RS ET – POST	S
03-Sep-24	SWL	3	6.75	SUMMER	32166	3RS ET – POST	S
04-Sep-24	NWL	2	63.65	SUMMER	32166	3RS ET – POST	P
04-Sep-24	NWL	2	12.05	SUMMER	32166	3RS ET – POST	S
09-Sep-24	AW	2	4.94	SUMMER	32166	3RS ET – POST	P
09-Sep-24	WL	2	8.778	SUMMER	32166	3RS ET – POST	P
09-Sep-24	WL	3	9.38	SUMMER	32166	3RS ET – POST	P
09-Sep-24	WL	2	4.16	SUMMER	32166	3RS ET – POST	S
09-Sep-24	WL	3	6.092	SUMMER	32166	3RS ET – POST	S
10-Sep-24	AW	2	2.29	SUMMER	32166	3RS ET – POST	P
10-Sep-24	AW	3	1.54	SUMMER	32166	3RS ET – POST	P
10-Sep-24	WL	2	16.153	SUMMER	32166	3RS ET – POST	P
10-Sep-24	WL	2	9.788	SUMMER	32166	3RS ET – POST	S
11-Sep-24	SWL	2	51.813	SUMMER	32166	3RS ET – POST	P
11-Sep-24	SWL	2	16.845	SUMMER	32166	3RS ET – POST	S
19-Sep-24	NEL	2	16.71	SUMMER	32166	3RS ET – POST	P
19-Sep-24	NEL	3	20.6	SUMMER	32166	3RS ET – POST	P
19-Sep-24	NEL	2	8.71	SUMMER	32166	3RS ET – POST	S
19-Sep-24	NEL	3	0.98	SUMMER	32166	3RS ET – POST	S
24-Sep-24	NEL	1	1.1	SUMMER	32166	3RS ET – POST	P

DATE	AREA	BEAU	KM SEARCHED	SEASON	VESSEL	TYPE	P/S
24-Sep-24	NEL	2	36.12	SUMMER	32166	3RS ET – POST	P
24-Sep-24	NEL	1	0.5	SUMMER	32166	3RS ET – POST	S
24-Sep-24	NEL	2	9.78	SUMMER	32166	3RS ET – POST	S
25-Sep-24	NWL	2	56.4	SUMMER	32166	3RS ET – POST	P
25-Sep-24	NWL	3	7.6	SUMMER	32166	3RS ET – POST	P
25-Sep-24	NWL	2	11.6	SUMMER	32166	3RS ET – POST	S

CWD Small Vessel Line-transect Survey

Sighting Data

DATE	STG #	TIME	CWD/FP	GP SZ	AREA	BEAU	PSD	EFFORT	TYPE	DEC LAT	DEC LON	SEASON	BOAT ASSOC.	P/S
09-Jul-24	1	1117	FP	7	SWL	2	71	ON	3RS ET – POST	22.165501	113.926321	SUMMER	NONE	P
09-Jul-24	2	1345	CWD	7	SWL	2	17	ON	3RS ET – POST	22.189164	113.887583	SUMMER	NONE	P
09-Jul-24	3	1404	CWD	4	SWL	2	24	ON	3RS ET – POST	22.197137	113.887181	SUMMER	PURSE SEINER	P
09-Jul-24	4	1435	CWD	1	SWL	2	482	ON	3RS ET – POST	22.191283	113.879085	SUMMER	NONE	P
09-Jul-24	5	1448	CWD	2	SWL	3	186	ON	3RS ET – POST	22.180607	113.878580	SUMMER	PURSE SEINER	P
09-Jul-24	6	1516	CWD	6	SWL	3	433	ON	3RS ET – POST	22.174373	113.868995	SUMMER	NONE	P
09-Jul-24	7	1537	CWD	2	SWL	2	220	ON	3RS ET – POST	22.190265	113.869258	SUMMER	NONE	P
09-Jul-24	8	1558	CWD	3	SWL	2	199	ON	3RS ET – POST	22.189163	113.859117	SUMMER	NONE	P
09-Jul-24	9	1605	CWD	4	SWL	2	105	ON	3RS ET – POST	22.184422	113.859532	SUMMER	NONE	P
09-Jul-24	10	1614	CWD	1	SWL	3	189	ON	3RS ET – POST	22.175476	113.859154	SUMMER	NONE	P
09-Jul-24	11	1618	CWD	2	SWL	3	27	ON	3RS ET – POST	22.182510	113.850143	SUMMER	NONE	P
09-Jul-24	12	1635	CWD	4	SWL	3	99	ON	3RS ET – POST	22.190094	113.850449	SUMMER	NONE	P
10-Jul-24	1	1021	CWD	4	WL	2	417	ON	3RS ET – POST	22.274378	113.847994	SUMMER	PURSE SEINER	S
10-Jul-24	2	1115	CWD	4	WL	2	270	ON	3RS ET – POST	22.238347	113.827155	SUMMER	NONE	S
10-Jul-24	3	1119	CWD	5	WL	3	57	ON	3RS ET – POST	22.235064	113.826031	SUMMER	NONE	S
10-Jul-24	4	1140	CWD	7	WL	3	272	ON	3RS ET – POST	22.223808	113.831824	SUMMER	NONE	P
10-Jul-24	5	1201	CWD	1	WL	3	96	ON	3RS ET – POST	22.214815	113.829508	SUMMER	NONE	P
10-Jul-24	6	1219	CWD	6	WL	3	600	ON	3RS ET – POST	22.205413	113.835764	SUMMER	NONE	P
10-Jul-24	7	1235	CWD	1	WL	3	176	ON	3RS ET – POST	22.195427	113.838294	SUMMER	NONE	P
10-Jul-24	8	1248	CWD	2	WL	3	96	ON	3RS ET – POST	22.196335	113.841044	SUMMER	NONE	P
11-Jul-24	1	1103	FP	3	SWL	3	38	ON	3RS ET – POST	22.156041	113.935873	SUMMER	NONE	P
11-Jul-24	2	1442	CWD	3	SWL	2	105	ON	3RS ET – POST	22.200599	113.866037	SUMMER	NONE	S
11-Jul-24	3	1520	CWD	3	SWL	3	150	ON	3RS ET – POST	22.185459	113.848936	SUMMER	NONE	P
12-Jul-24	1	1102	CWD	7	WL	3	120	ON	3RS ET – POST	22.241310	113.837431	SUMMER	NONE	P
12-Jul-24	2	1129	CWD	2	WL	3	22	ON	3RS ET – POST	22.232020	113.833559	SUMMER	NONE	P
12-Jul-24	3	1206	CWD	9	WL	3	20	ON	3RS ET – POST	22.210995	113.838672	SUMMER	NONE	P
12-Jul-24	4	1225	CWD	1	WL	3	11	ON	3RS ET – POST	22.204993	113.834609	SUMMER	NONE	P
12-Jul-24	5	1229	CWD	1	WL	3	255	ON	3RS ET – POST	22.205064	113.831774	SUMMER	NONE	P
12-Jul-24	6	1251	CWD	11	WL	3	56	ON	3RS ET – POST	22.196207	113.837629	SUMMER	NONE	P
07-Aug-24	1	1125	FP	4	SWL	2	114	ON	3RS ET – POST	22.181604	113.927613	SUMMER	NONE	P
07-Aug-24	2	1436	CWD	10	SWL	2	730	ON	3RS ET – POST	22.178239	113.869397	SUMMER	PURSE SEINER	P

DATE	STG #	TIME	CWD/FP	GP SZ	AREA	BEAU	PSD	EFFORT	TYPE	DEC LAT	DEC LON	SEASON	BOAT ASSOC.	P/S
07-Aug-24	3	1500	CWD	2	SWL	2	93	ON	3RS ET – POST	22.190175	113.868994	SUMMER	NONE	P
08-Aug-24	1	1255	CWD	1	SWL	3	115	ON	3RS ET – POST	22.208114	113.898101	SUMMER	NONE	P
08-Aug-24	2	1528	CWD	1	SWL	3	209	ON	3RS ET – POST	22.187852	113.850961	SUMMER	NONE	P
08-Aug-24	3	1539	CWD	5	SWL	3	340	ON	3RS ET – POST	22.191299	113.850219	SUMMER	NONE	P
13-Aug-24	1	1026	CWD	2	WL	2	279	ON	3RS ET – POST	22.276314	113.850779	SUMMER	NONE	S
13-Aug-24	2	1029	CWD	4	WL	2	73	ON	3RS ET – POST	22.274353	113.849073	SUMMER	NONE	S
13-Aug-24	3	1049	CWD	6	WL	2	780	ON	3RS ET – POST	22.268972	113.851556	SUMMER	NONE	P
13-Aug-24	4	1106	CWD	2	WL	2	56	ON	3RS ET – POST	22.261087	113.847140	SUMMER	NONE	P
13-Aug-24	5	1130	CWD	4	WL	2	460	ON	3RS ET – POST	22.249906	113.845212	SUMMER	NONE	P
13-Aug-24	6	1155	CWD	1	WL	2	61	ON	3RS ET – POST	22.241160	113.840797	SUMMER	NONE	P
13-Aug-24	7	1219	CWD	1	WL	2	25	ON	3RS ET – POST	22.230694	113.838275	SUMMER	NONE	S
13-Aug-24	8	1223	CWD	11	WL	2	119	ON	3RS ET – POST	22.225699	113.837617	SUMMER	NONE	S
13-Aug-24	9	1259	CWD	2	WL	2	39	ON	3RS ET – POST	22.214130	113.823569	SUMMER	NONE	P
13-Aug-24	10	1309	CWD	2	WL	2	46	ON	3RS ET – POST	22.214249	113.834008	SUMMER	NONE	P
13-Aug-24	11	1317	CWD	2	WL	2	40	ON	3RS ET – POST	22.209576	113.839496	SUMMER	NONE	S
13-Aug-24	12	1325	CWD	1	WL	2	63	ON	3RS ET – POST	22.204847	113.836614	SUMMER	NONE	P
13-Aug-24	13	1339	CWD	4	WL	2	96	ON	3RS ET – POST	22.195582	113.831013	SUMMER	NONE	P
23-Aug-24	1	1011	CWD	6	WL	2	6	ON	3RS ET – POST	22.265732	113.855409	SUMMER	NONE	S
23-Aug-24	2	1102	CWD	1	WL	2	1964	ON	3RS ET – POST	22.241990	113.842909	SUMMER	NONE	P
23-Aug-24	3	1124	CWD	2	WL	2	149	ON	3RS ET – POST	22.232578	113.833757	SUMMER	NONE	P
23-Aug-24	4	1144	CWD	7	WL	2	102	ON	3RS ET – POST	22.224634	113.837657	SUMMER	NONE	S
23-Aug-24	5	1201	CWD	2	WL	2	183	ON	3RS ET – POST	22.223598	113.831367	SUMMER	NONE	P
23-Aug-24	6	1227	CWD	2	WL	2	50	ON	3RS ET – POST	22.205672	113.837604	SUMMER	NONE	S
23-Aug-24	7	1302	CWD	1	WL	2	367	ON	3RS ET – POST	22.193667	113.842429	SUMMER	NONE	S
03-Sep-24	1	1048	FP	1	SWL	2	120	ON	3RS ET – POST	22.165969	113.935472	SUMMER	NONE	P
03-Sep-24	2	1208	FP	2	SWL	3	79	ON	3RS ET – POST	22.154981	113.906476	SUMMER	NONE	S
03-Sep-24	3	1255	FP	5	SWL	2	62	ON	3RS ET – POST	22.180732	113.897821	SUMMER	NONE	P
03-Sep-24	4	1336	FP	2	SWL	2	87	ON	3RS ET – POST	22.198741	113.887154	SUMMER	NONE	P
03-Sep-24	5	1340	FP	5	SWL	2	50	ON	3RS ET – POST	22.201740	113.887273	SUMMER	NONE	P
03-Sep-24	6	1429	CWD	1	SWL	2	483	ON	3RS ET – POST	22.187837	113.869114	SUMMER	NONE	P
03-Sep-24	7	1459	CWD	3	SWL	2	749	ON	3RS ET – POST	22.193207	113.859253	SUMMER	NONE	P
03-Sep-24	8	1514	CWD	1	SWL	1	81	ON	3RS ET – POST	22.179321	113.859169	SUMMER	NONE	P
03-Sep-24	9	1531	CWD	1	SWL	1	69	ON	3RS ET – POST	22.179610	113.849422	SUMMER	NONE	P









DATE	STG #	TIME	CWD/FP	GP SZ	AREA	BEAU	PSD	EFFORT	TYPE	DEC LAT	DEC LON	SEASON	BOAT ASSOC.	P/S
04-Sep-24	1	1028	CWD	11	NWL	2	1305	ON	3RS ET – POST	22.279858	113.870376	SUMMER	NONE	P
09-Sep-24	1	0959	CWD	2	WL	2	45	ON	3RS ET – POST	22.293002	113.861438	SUMMER	NONE	P
09-Sep-24	2	1032	CWD	4	WL	2	147	ON	3RS ET – POST	22.262982	113.856322	SUMMER	NONE	S
09-Sep-24	3	1108	CWD	3	WL	2	58	ON	3RS ET – POST	22.241153	113.835529	SUMMER	NONE	P
09-Sep-24	4	1133	CWD	4	WL	3	47	ON	3RS ET – POST	22.223890	113.825113	SUMMER	NONE	P
09-Sep-24	5	1152	CWD	5	WL	3	374	ON	3RS ET – POST	22.214263	113.830389	SUMMER	NONE	P
10-Sep-24	1	1012	CWD	2	WL	2	682	ON	3RS ET – POST	22.268757	113.851293	SUMMER	NONE	P
10-Sep-24	2	1027	CWD	2	WL	2	50	ON	3RS ET – POST	22.260285	113.852297	SUMMER	GILLNETTER	S
10-Sep-24	3	1109	CWD	2	WL	2	515	ON	3RS ET – POST	22.241557	113.842116	SUMMER	NONE	P
10-Sep-24	4	1125	CWD	2	WL	2	650	ON	3RS ET – POST	22.237514	113.826301	SUMMER	NONE	S
10-Sep-24	5	1130	CWD	2	WL	2	189	ON	3RS ET – POST	22.231850	113.828151	SUMMER	NONE	P
10-Sep-24	6	1145	CWD	8	WL	2	178	ON	3RS ET – POST	22.223681	113.836624	SUMMER	NONE	P
10-Sep-24	7	1205	CWD	2	WL	2	325	ON	3RS ET – POST	22.224087	113.825049	SUMMER	NONE	P
10-Sep-24	8	1231	CWD	2	WL	2	641	ON	3RS ET – POST	22.204897	113.828446	SUMMER	NONE	P
10-Sep-24	9	1249	CWD	10	WL	2	553	ON	3RS ET – POST	22.196120	113.832790	SUMMER	NONE	P
11-Sep-24	1	1040	FP	7	SWL	2	160	ON	3RS ET – POST	22.180715	113.935919	SUMMER	NONE	P
11-Sep-24	2	1049	FP	1	SWL	2	147	ON	3RS ET – POST	22.161447	113.936922	SUMMER	NONE	P
11-Sep-24	3	1110	FP	4	SWL	2	196	ON	3RS ET – POST	22.164758	113.927141	SUMMER	NONE	P
11-Sep-24	4	1156	FP	3	SWL	2	39	ON	3RS ET – POST	22.156532	113.917126	SUMMER	NONE	P
11-Sep-24	5	1208	FP	3	SWL	2	28	ON	3RS ET – POST	22.144751	113.907689	SUMMER	NONE	P
11-Sep-24	6	1211	FP	8	SWL	2	208	ON	3RS ET – POST	22.148874	113.907779	SUMMER	NONE	P
11-Sep-24	7	1244	FP	2	SWL	2	18	ON	3RS ET – POST	22.209166	113.903346	SUMMER	NONE	S
11-Sep-24	8	1501	CWD	6	SWL	2	398	ON	3RS ET – POST	22.186514	113.849794	SUMMER	NONE	P

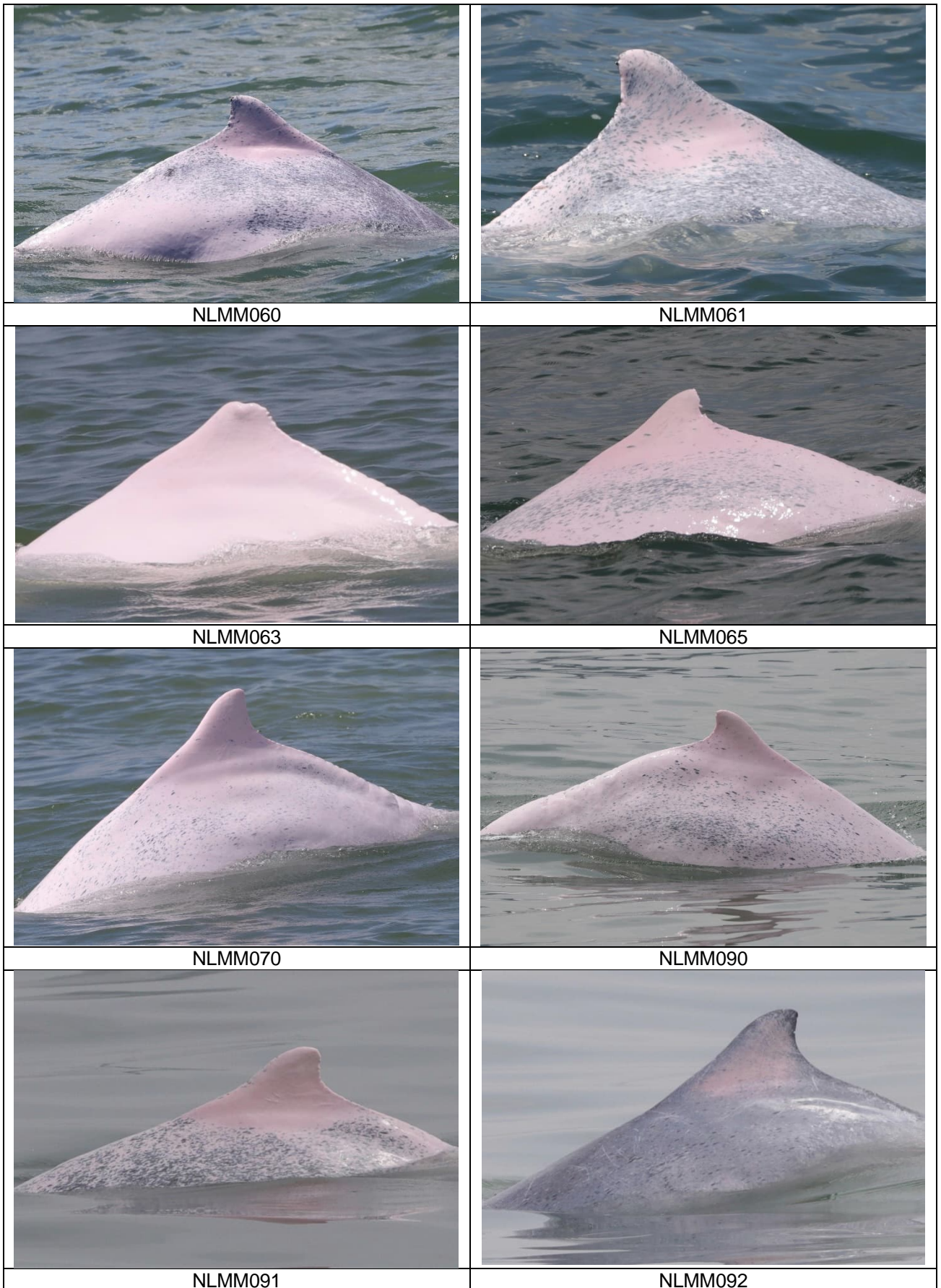
Abbreviations: STG# = Sighting Number; GP SZ = Group Size; BEAU = Beaufort Sea State; PSD = Perpendicular Distance (in metres); N/A = Not Applicable; DEC LAT = Latitude (WGS84 in Decimal), DEC LON = Longitude (WGS84 in Decimal); BOAT ASSOC. = Fishing Boat Association; P/S = Primary Transect / Secondary Transect.

Sighting data of finless porpoise (FP) are presented for reference only. No relevant figure or text will be mentioned in the quarterly EM&A report. All FP sightings are excluded in calculation

CWD Small Vessel Line-transect Survey

Photo Identification

	
NLMM012	NLMM013
	
NLMM023	NLMM027
	
NLMM028	NLMM039
	
SLMM052	NLMM055





NLMM093



SLMM002



SLMM003



SLMM007



SLMM010



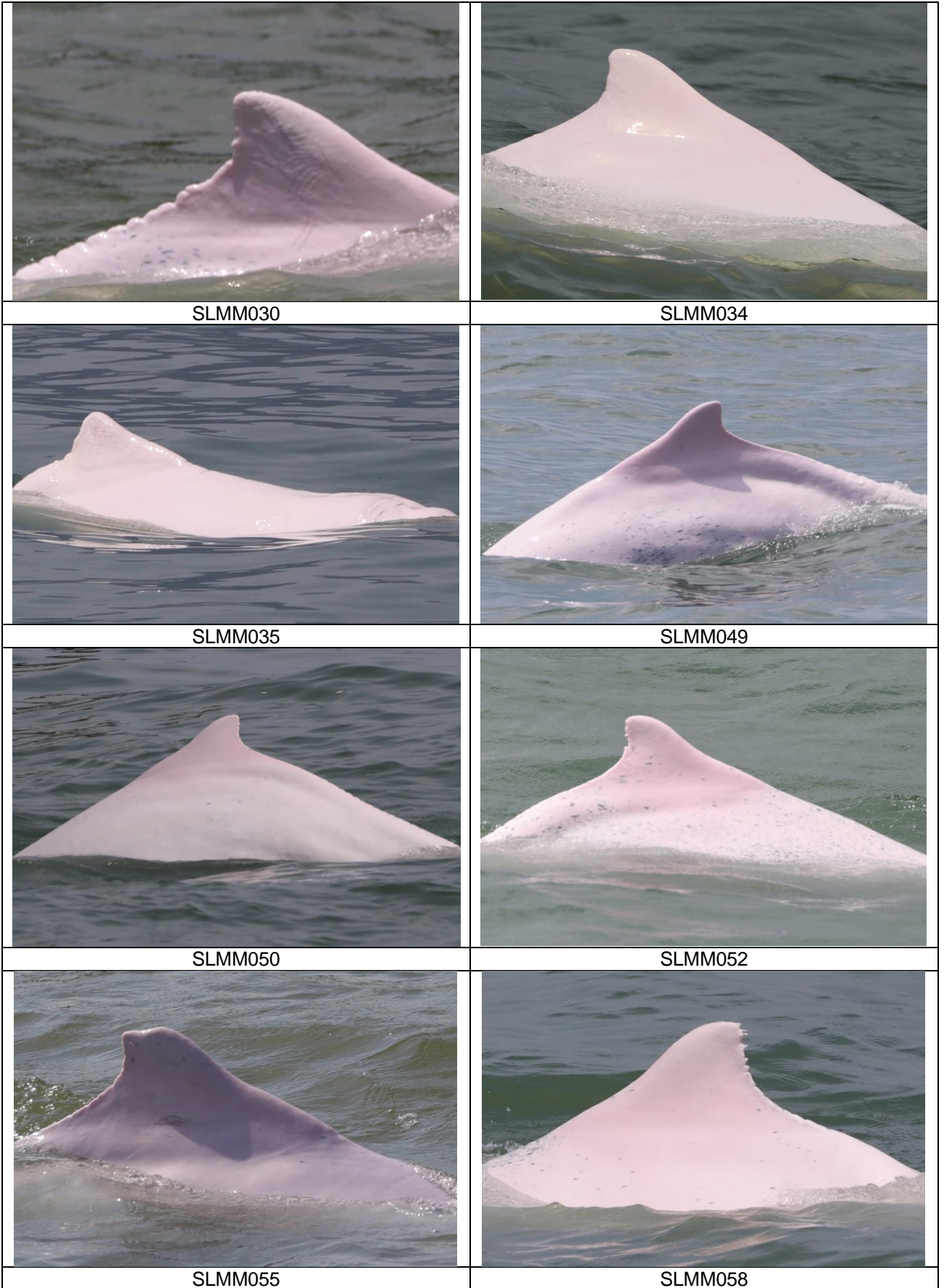
SLMM014

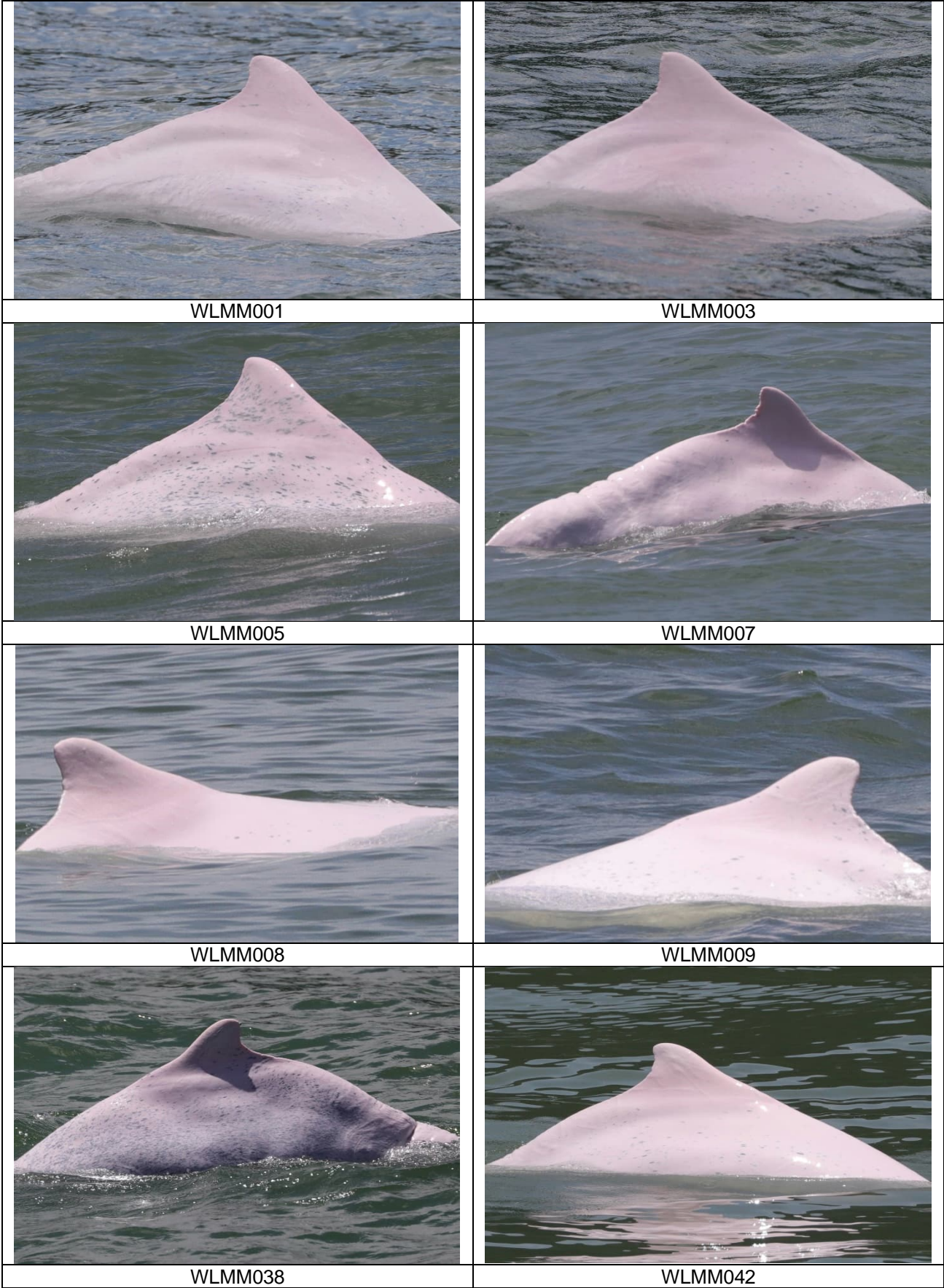


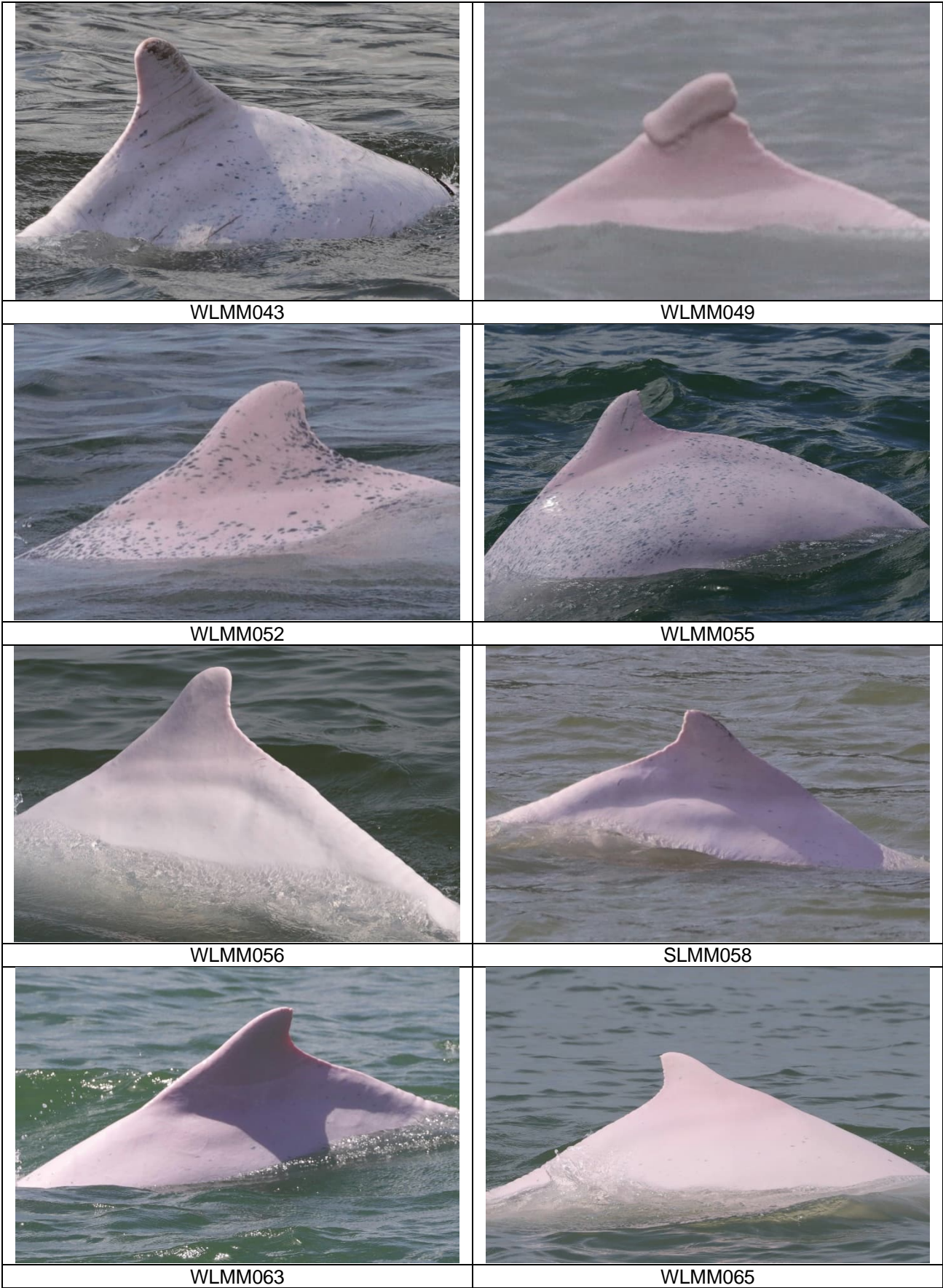
SLMM023

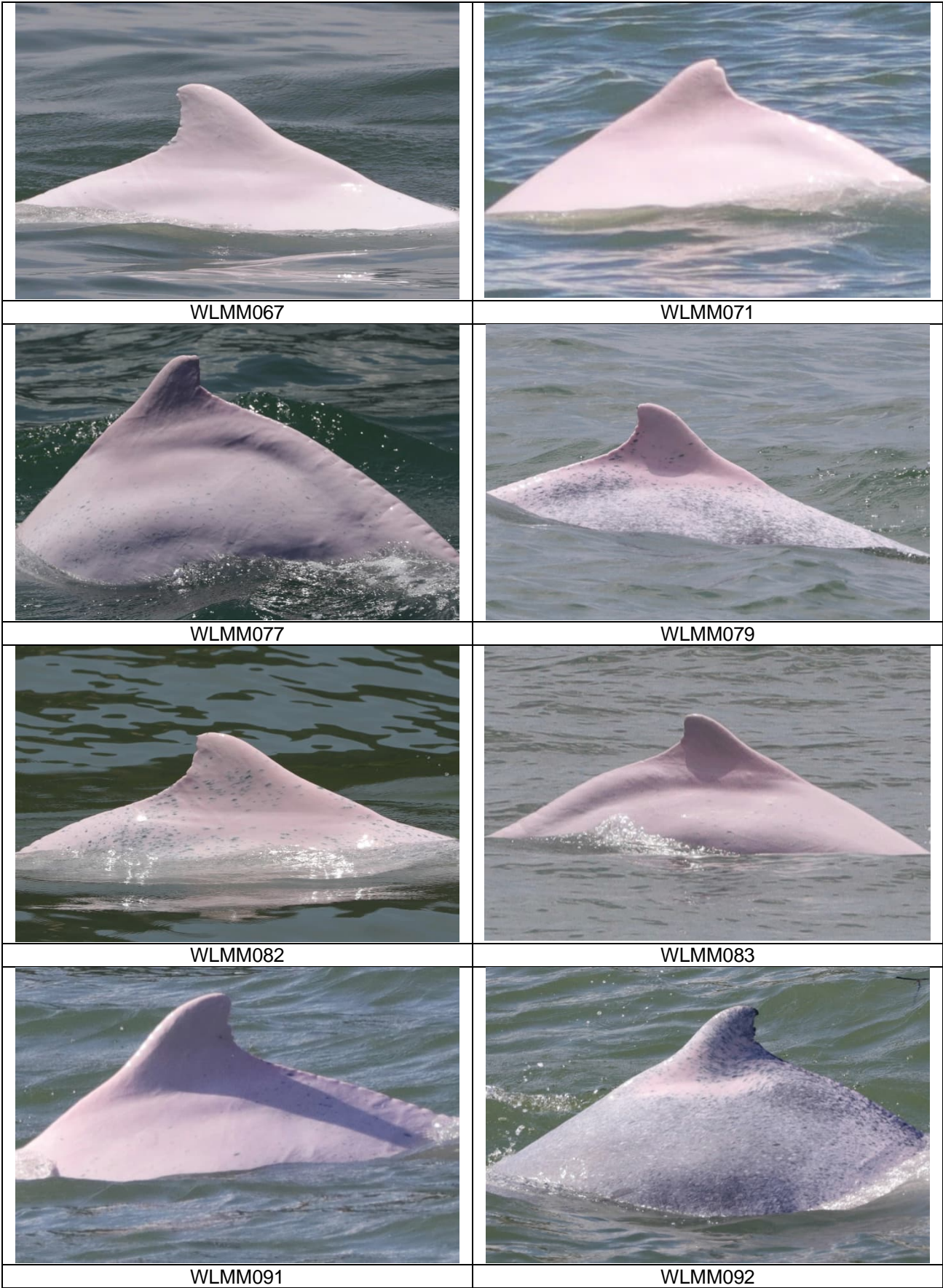


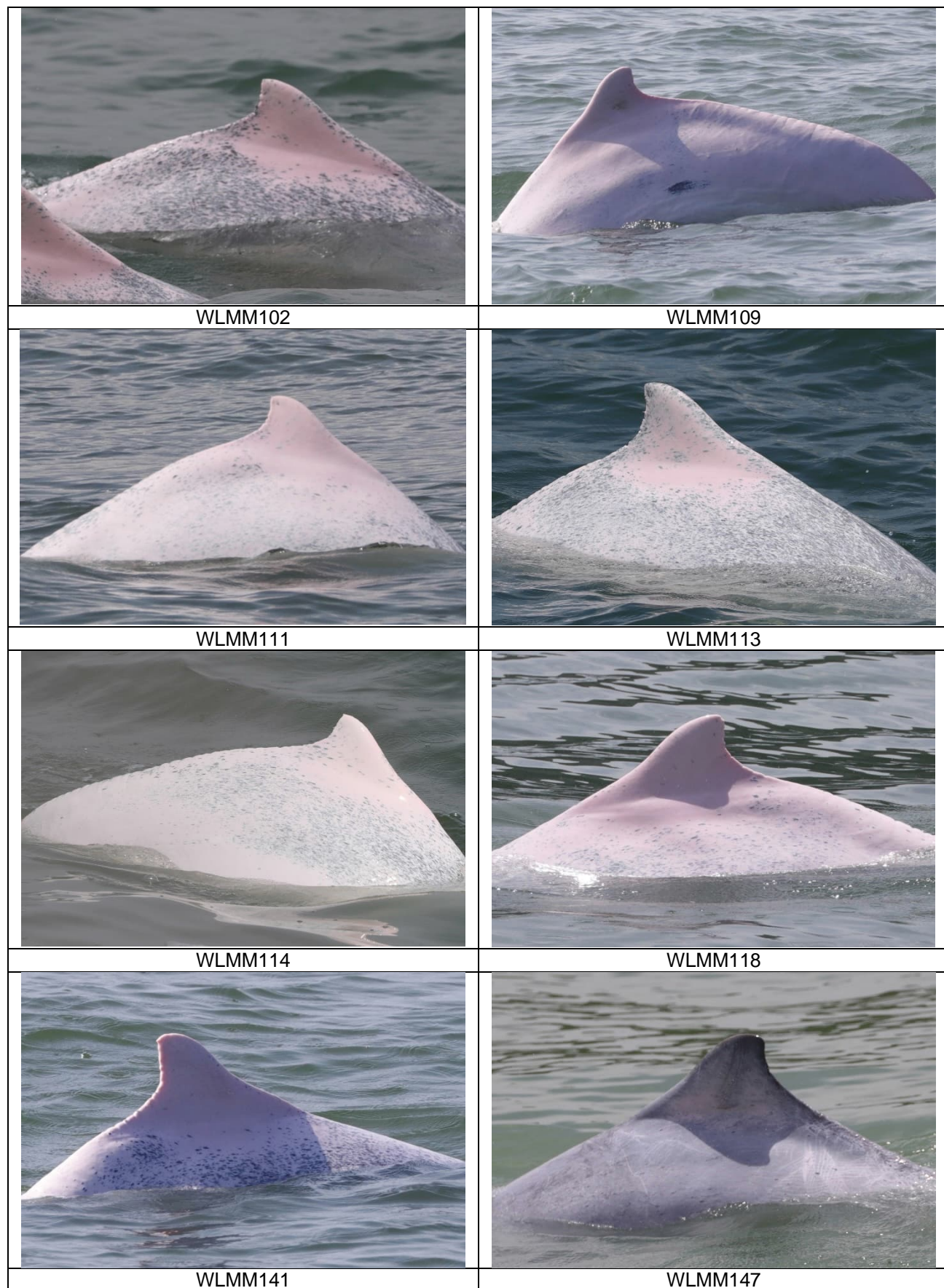
SLMM027

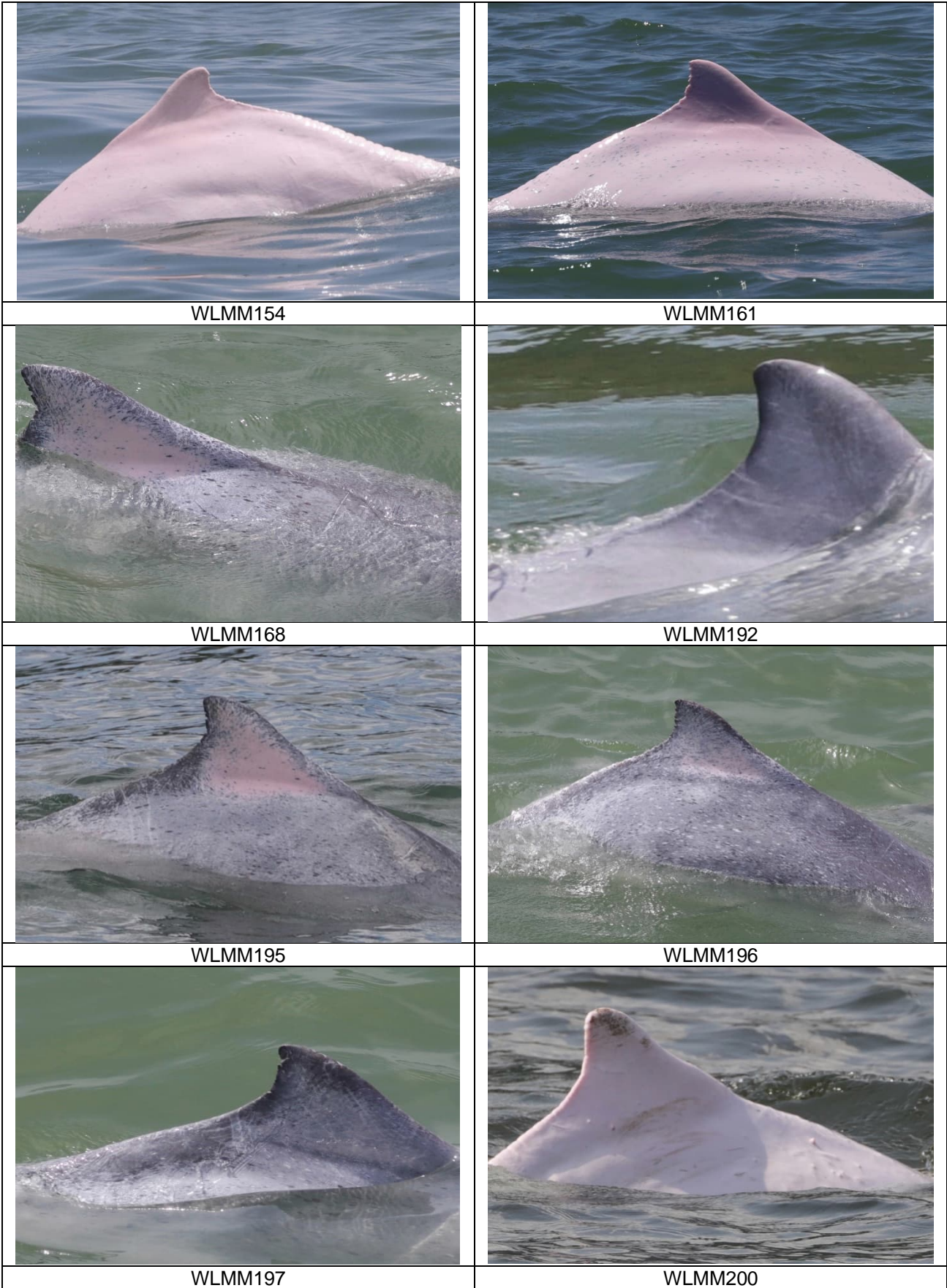














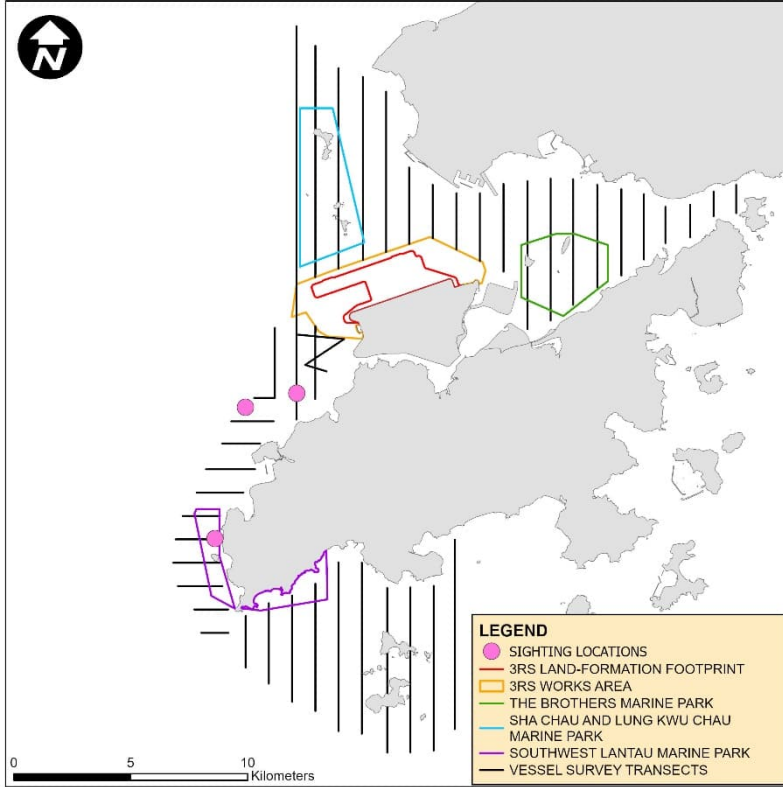
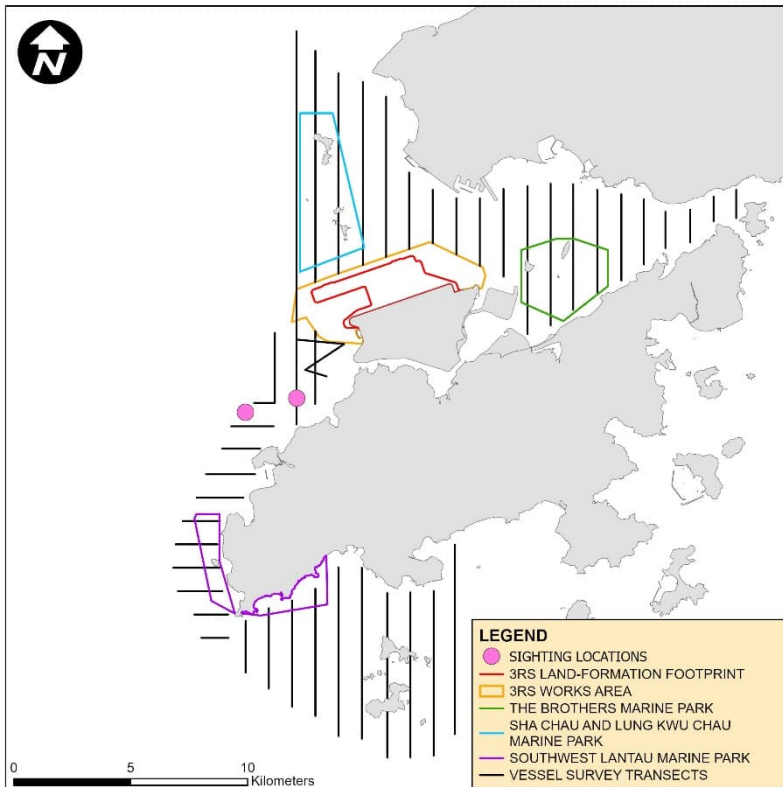
	
WLMM201	WLMM202
	
WLMM203 (Lower)	

Photo Identification – Re-sighting Locations

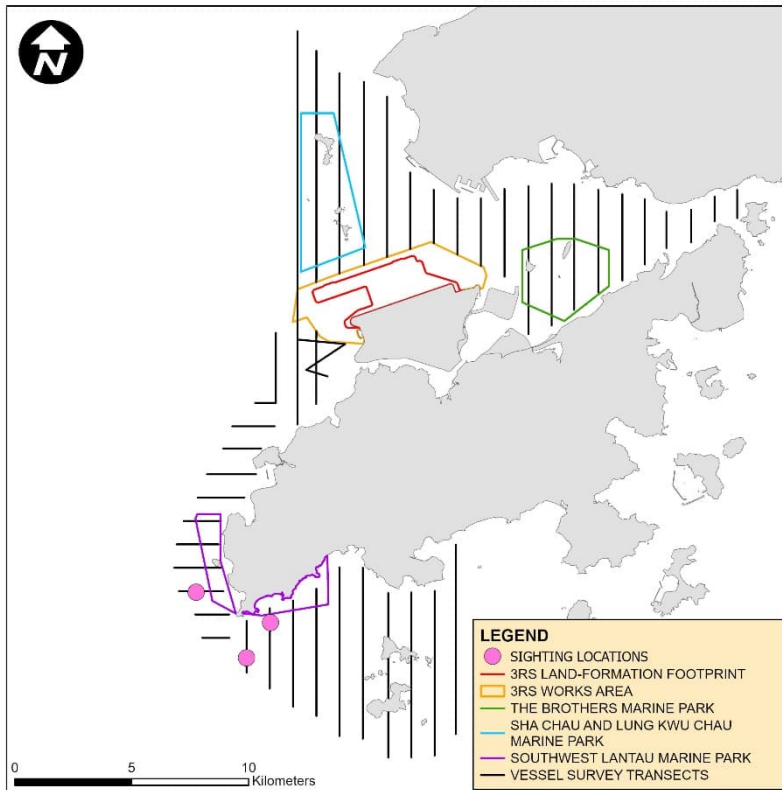
NLMM012



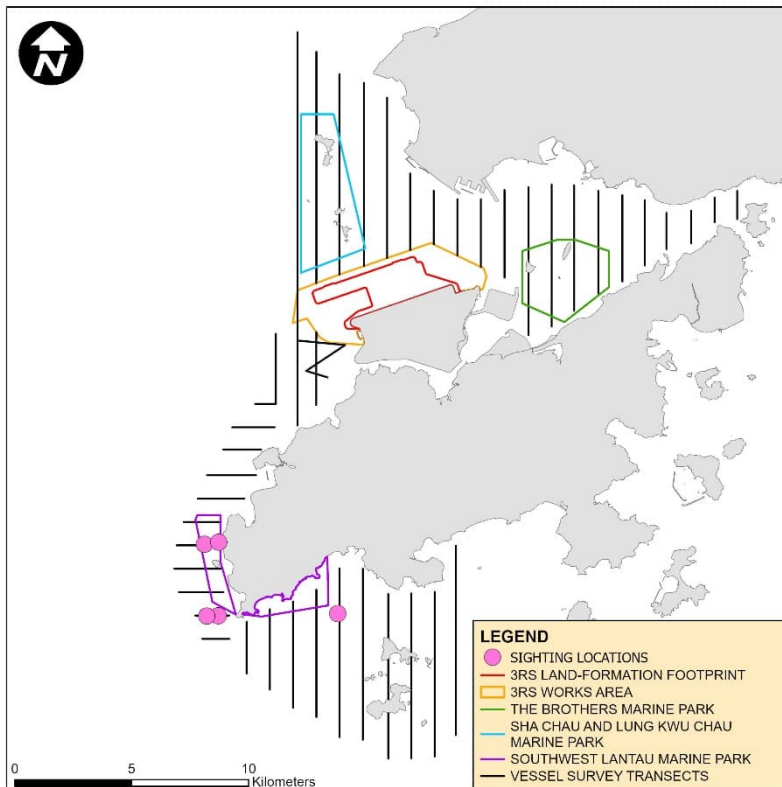
NLMM039



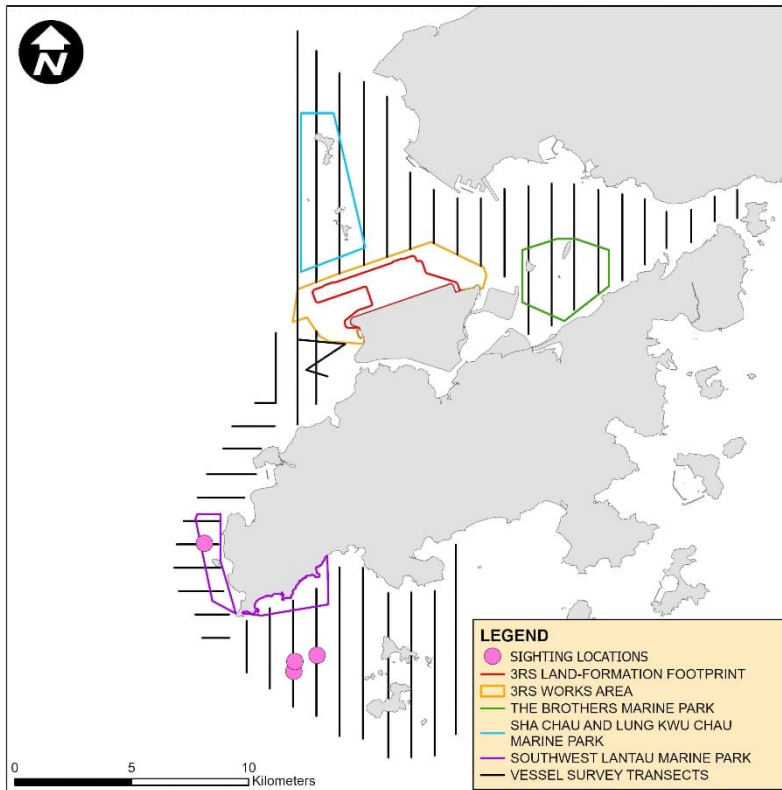
SLMM023



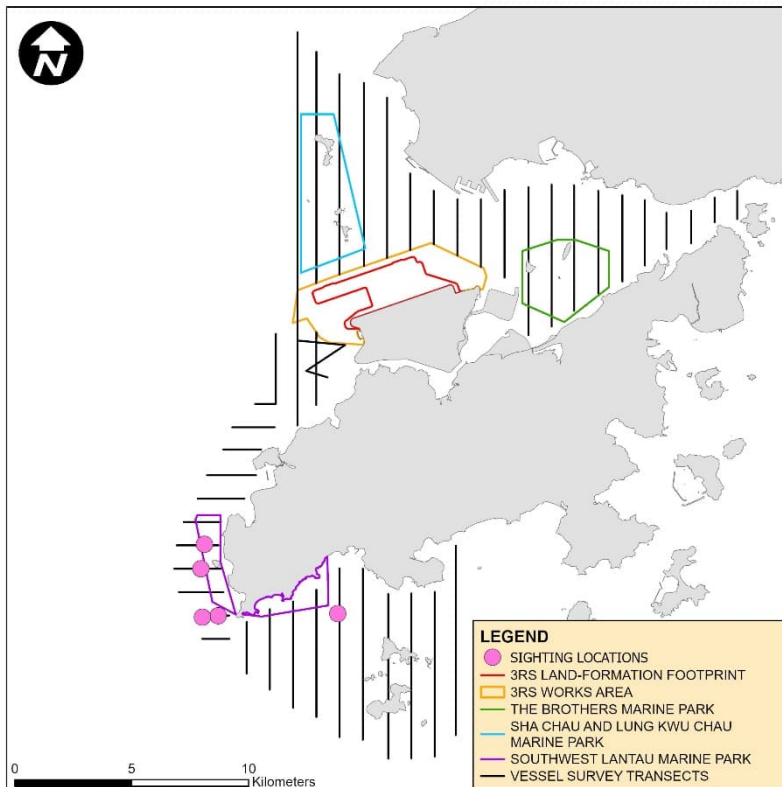
SLMM049



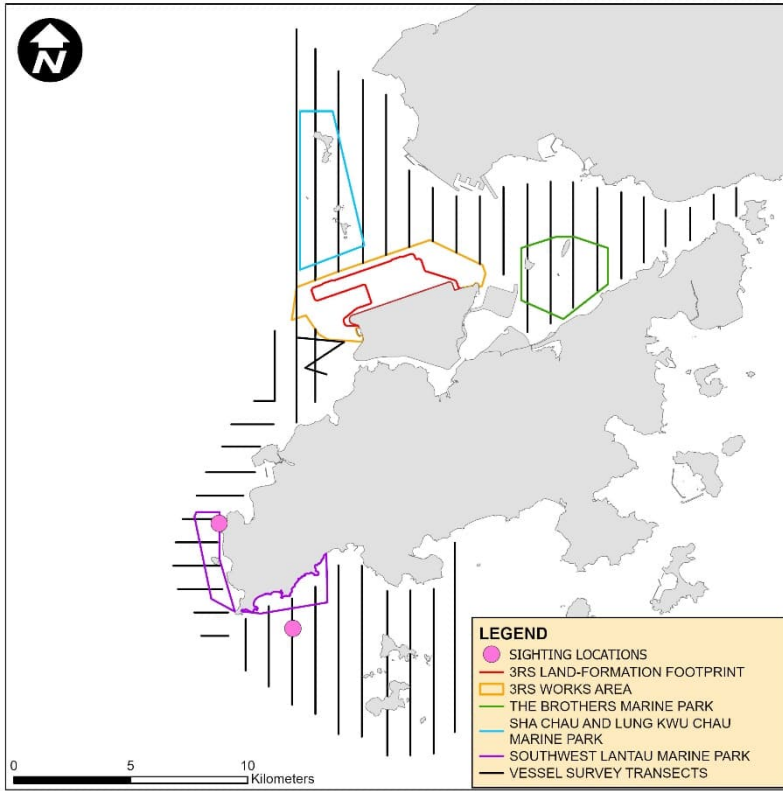
SLMM050



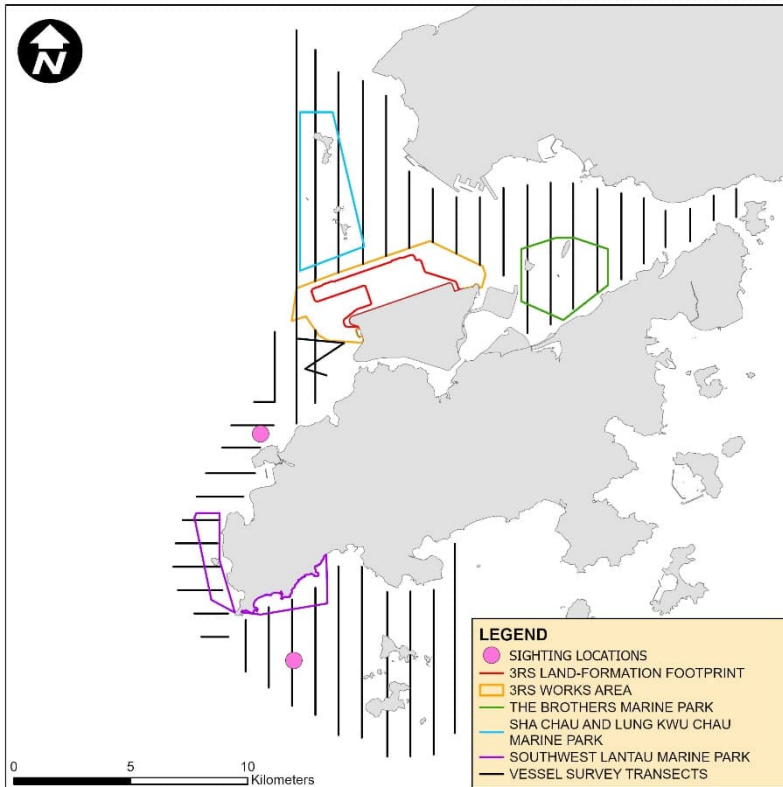
WLMM001



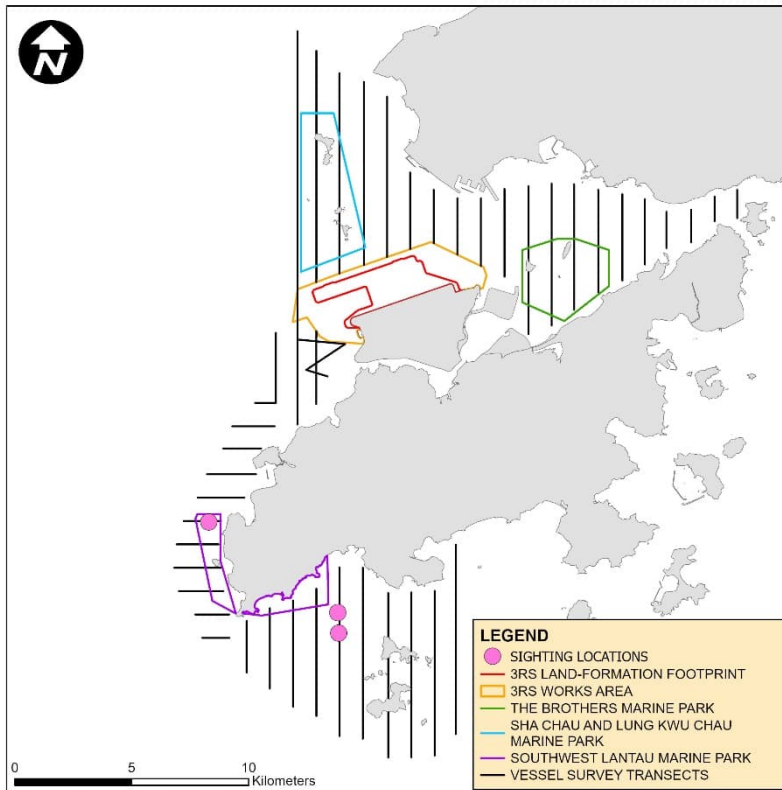
WLMM043



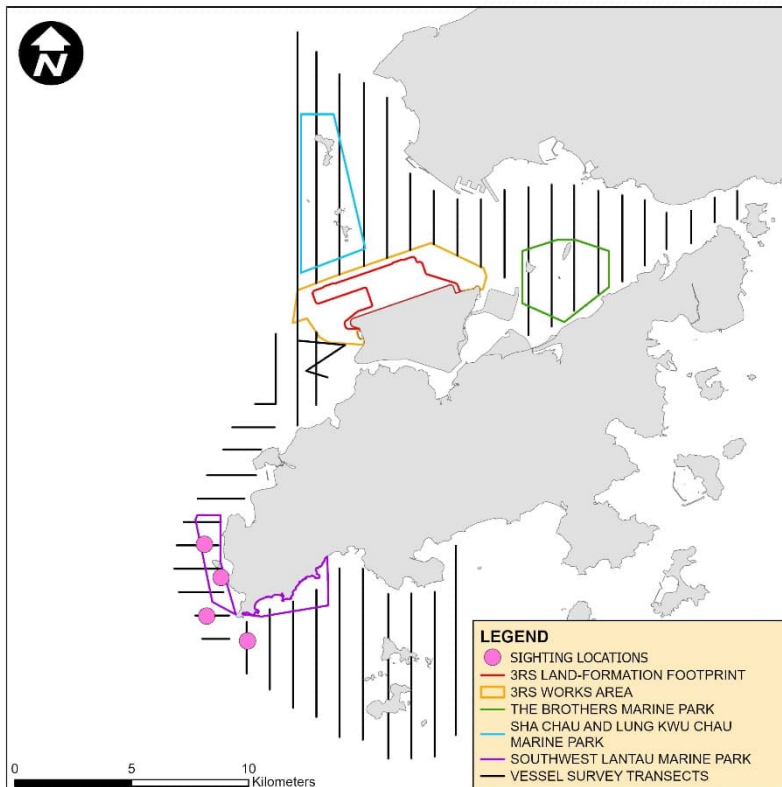
WLMM065



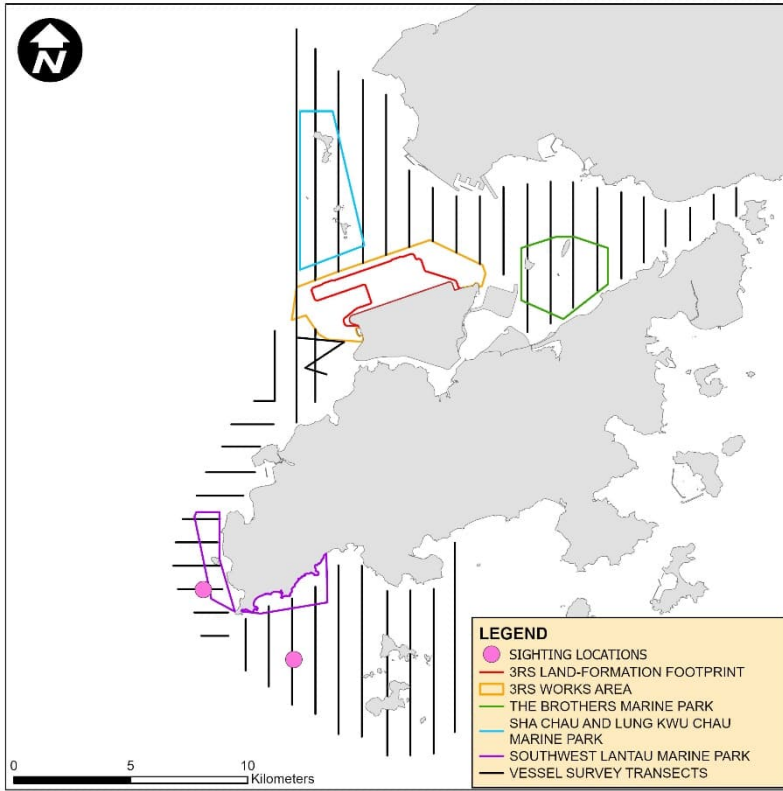
WLMM077



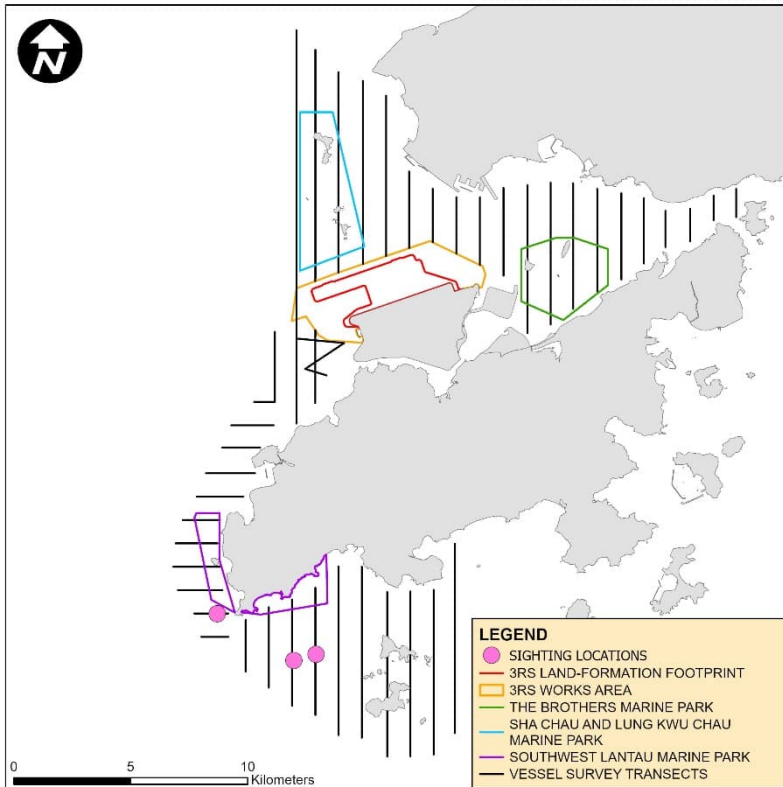
WLMM109



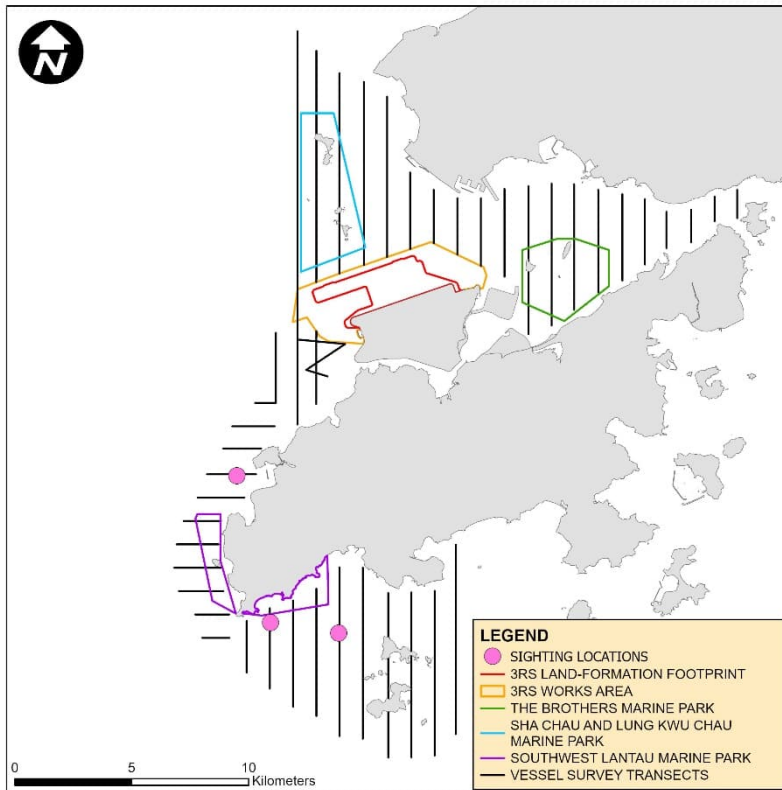
WLMM111



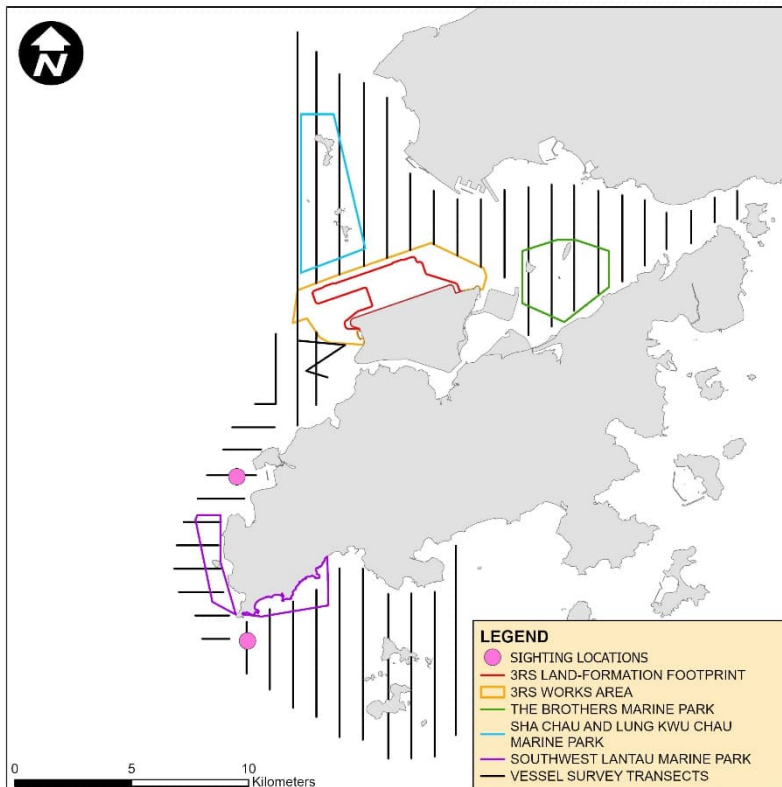
WLMM114



WLMM118



WLMM141



WLMM200

