

海豚管制区：闭路电视监察系统

Dolphin Exclusion Zone: Closed-circuit Television Monitoring System

三跑道系统项目实施海豚管制区，以预防及缓解填海相关工程所产生噪音对中华白海豚的影响。在预计会产生较高音量的施工活动范围需要实施海豚管制区。除了安排由已受训的海豚观察员在工程船上监察海豚管制区外，亦有个别承建商提出及采用闭路电视监察系统作为监察海豚管制区的改善及替换方法。

The Three-runway System (3RS) project adopts Dolphin Exclusion Zone (DEZ) as a precautionary and mitigation measure for the noise impact on Chinese White Dolphin (CWD) from reclamation-related construction works. Works activities that are expected to be noisy, are required to implement DEZ. For the implementation of DEZ, trained dolphin observers (DOs) shall conduct the monitoring on work barges. Apart from this method, individual contractor initiated and adopted the closed-circuit television (CCTV) monitoring system as an improvement and alternative option.

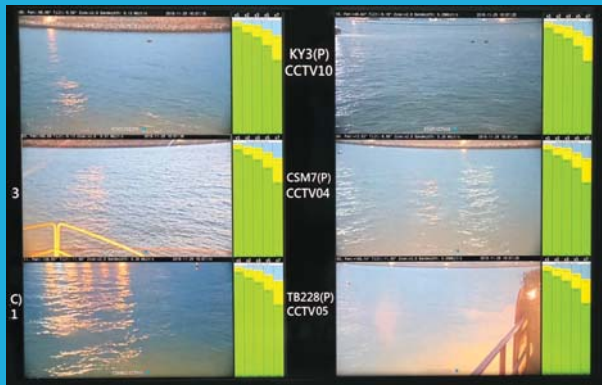


在工程船上安装的闭路电视监察系统
CCTV installed on work barge

闭路电视监察系统安装在工程船上，而观察角度完全覆盖海豚管制区范围。已受训练的海豚观察员在承建商的工地办公室内监察闭路电视的实时影像。

CCTVs are installed on work barges and the sighting angles fully covered the DEZs. Trained DOs would monitor through the real-time CCTV images at the contractor's site office.

海豚观察员监察闭路电视的实时影像
Real-time CCTV image for Dolphin Observer



使用闭路电视监察系统作为监察海豚管制区的好处 Benefits in using CCTV system to monitor DEZs

- 容许海豚观察员在任何天气情况下於日间及夜间在室内进行监察
Allow DOs to conduct the monitoring under any weather conditions, day and night, in an indoor environment
- 容许海豚观察员可同时监察不同海豚管制区
Allow DOs to monitor different DEZs simultaneously
- 闭路电视能於夜间及恶劣天气情况下提供高质量影像
CCTV offers high quality images even in the night time and during adverse weather
- 容许海豚观察员在有需要时放大影像以作更详细的检查
Allow DOs to zoom in the images for closer inspection whenever necessary

