

# 海豚管制區：閉路電視監察系統

## Dolphin Exclusion Zone: Closed-circuit Television Monitoring System

三跑道系統項目實施海豚管制區，以預防及緩解填海相關工程所產生噪音對中華白海豚的影響。在預計會產生較高音量的施工活動範圍需要實施海豚管制區。除了安排由已受訓的海豚觀察員在工程船上監察海豚管制區外，亦有個別承建商提出及採用閉路電視監察系統作為監察海豚管制區的改善及替換方法。

The Three-runway System (3RS) project adopts Dolphin Exclusion Zone (DEZ) as a precautionary and mitigation measure for the noise impact on Chinese White Dolphin (CWD) from reclamation-related construction works. Works activities that are expected to be noisy, are required to implement DEZ. For the implementation of DEZ, trained dolphin observers (DOs) shall conduct the monitoring on work barges. Apart from this method, individual contractor initiated and adopted the closed-circuit television (CCTV) monitoring system as an improvement and alternative option.

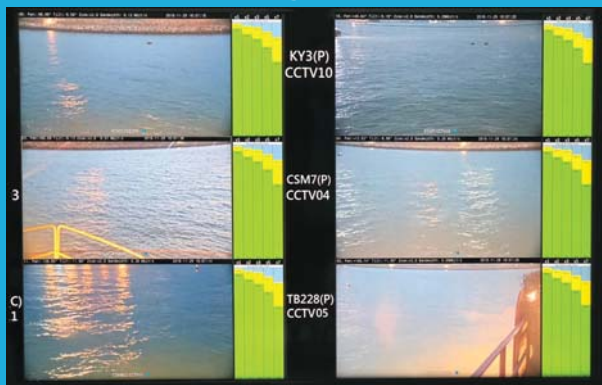
在工程船上安裝的閉路電視監察系統  
CCTV installed on work barge



閉路電視監察系統安裝在工程船上，而觀察角度完全覆蓋海豚管制區範圍。已受訓練的海豚觀察員在承建商的工地辦公室內監察閉路電視的實時影像。

CCTVs are installed on work barges and the sighting angles fully covered the DEZs. Trained DOs would monitor through the real-time CCTV images at the contractor's site office.

海豚觀察員監察閉路電視的實時影像  
Real-time CCTV image for Dolphin Observer



### 使用閉路電視監察系統作為監察海豚管制區的好處 Benefits in using CCTV system to monitor DEZs

- 容許海豚觀察員在任何天氣情況下於日間及夜間在室內進行監察  
Allow DOs to conduct the monitoring under any weather conditions, day and night, in an indoor environment
- 容許海豚觀察員可同時監察不同海豚管制區  
Allow DOs to monitor different DEZs simultaneously
- 閉路電視能於夜間及惡劣天氣情況下提供高質量影像  
CCTV offers high quality images even in the night time and during adverse weather
- 容許海豚觀察員在有需要時放大影像以作更詳細的檢查  
Allow DOs to zoom in the images for closer inspection whenever necessary

