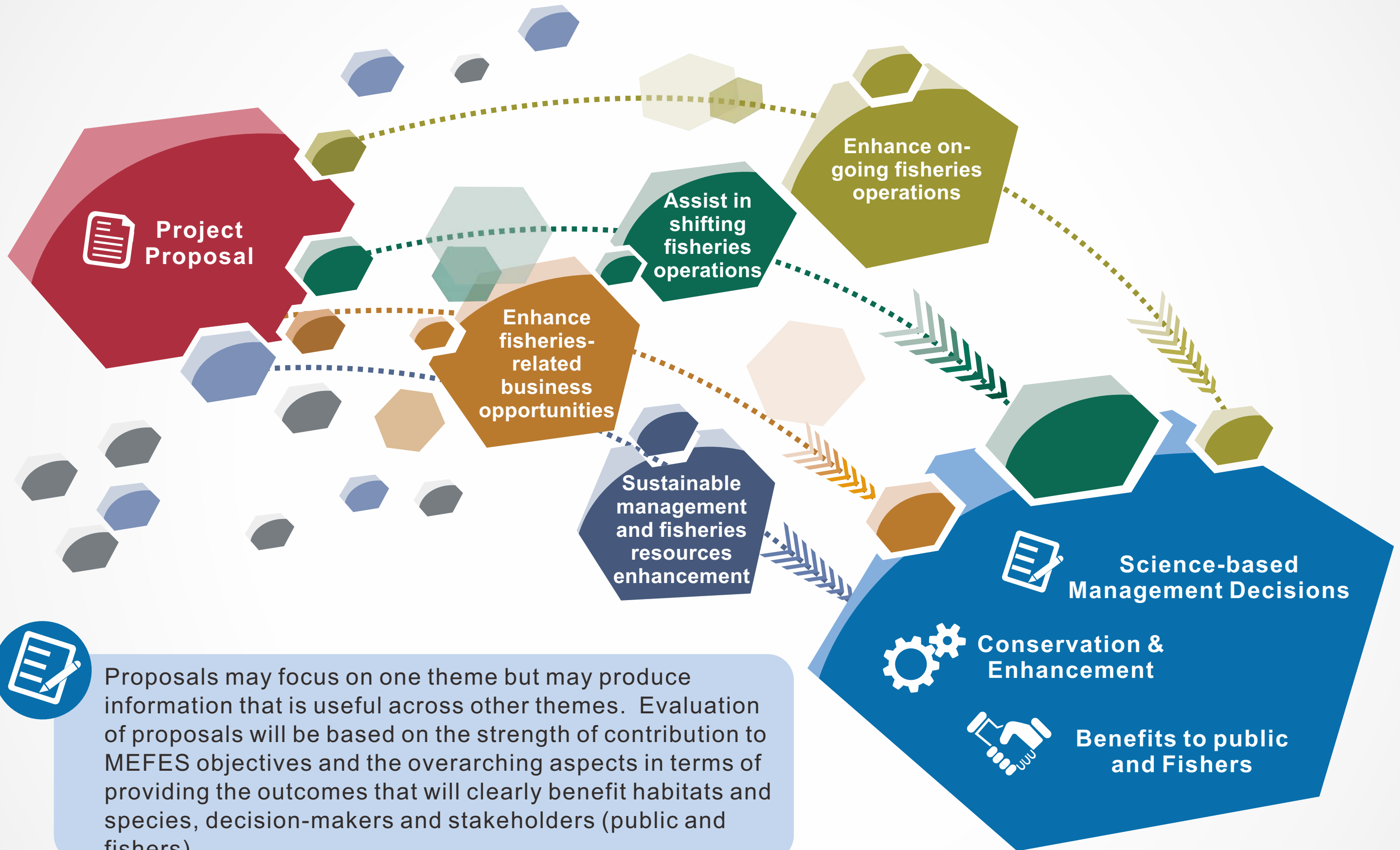


Figure 3.4
General Considerations for Selection of Proposals for Funding



Proposals may focus on one theme but may produce information that is useful across other themes. Evaluation of proposals will be based on the strength of contribution to MEFES objectives and the overarching aspects in terms of providing the outcomes that will clearly benefit habitats and species, decision-makers and stakeholders (public and fishers).