

E. Site Photo Record of Underground Pipeline Trench of EPSS1 at BH2 - BH2-S4, BH2-S5, BH2-S7





E.1 Site Photo Record of Underground Pipeline Trench of EPSS1 at BH2 - BH2-S4, BH2-S5, BH2-S7 (Layout)

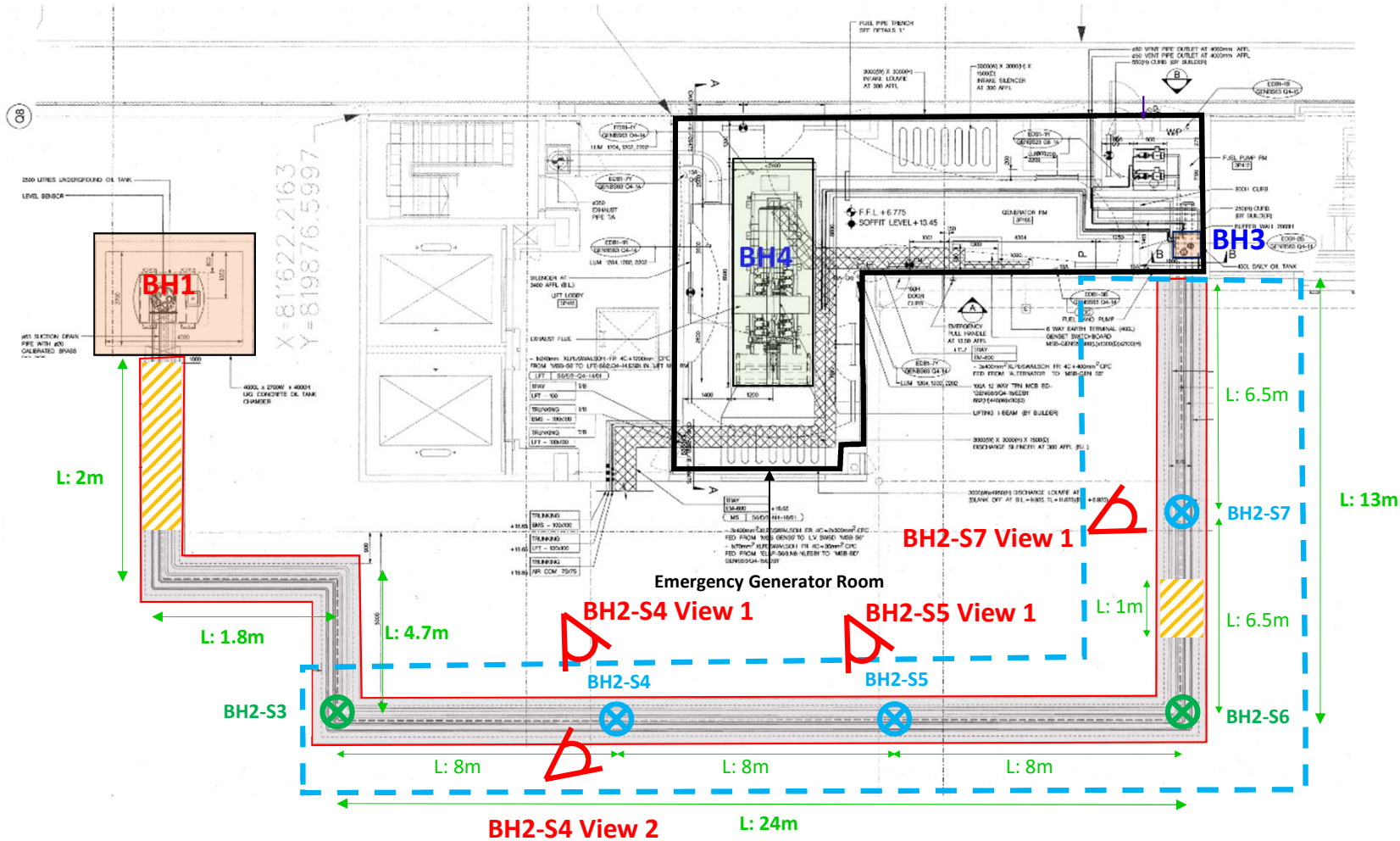
E.2 Site Photo Record of Underground Pipeline Trench of EPSS1 at BH2 - BH2-S4, BH2-S5, BH2-S7 (Photo Record)

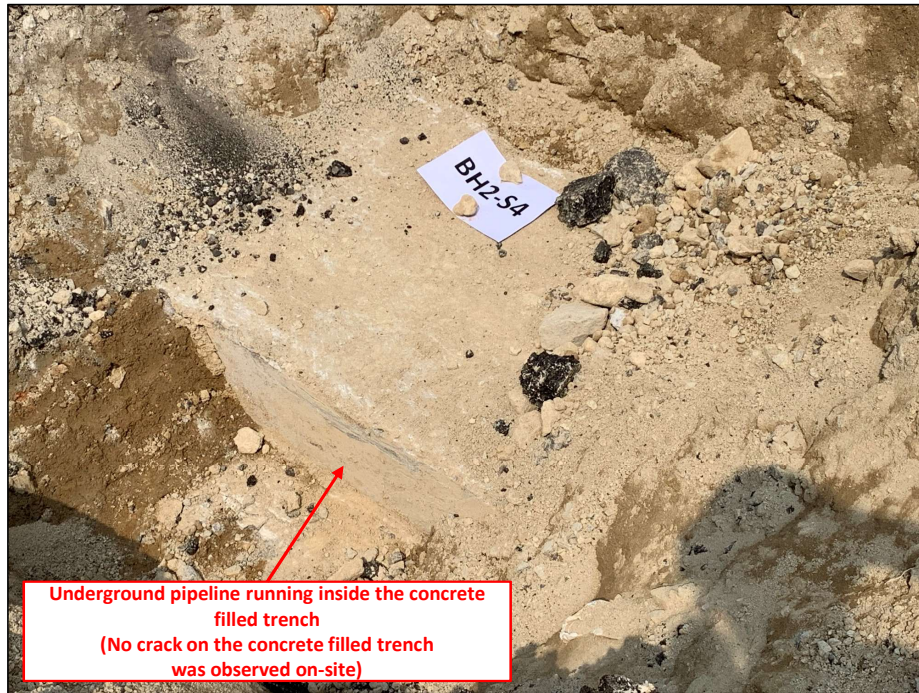
Appendix E.1 Site Photo Record of Underground Pipeline Trench of EPSS1 at **BH2 - BH2-S4, BH2-S5, BH2-S7** (Layout)

Annotation of Sampling Point	Type of Sampling Point	Sampling Elevation	Type of Sample	Remarks
BH2-S3	Curvature	Right underneath concrete trench corner	Soil	Reference point for CAR T2 EPSS1 Vol. 2 (this CAR)
BH2-S6	Curvature	Right underneath concrete trench corner	Soil	
BH2-S4	Additional	At the level of fuel pipelines within the concrete trench	Sand	Same sampling point selection in SCAP
BH2-S5	Additional			Sand sampling was not possible with concrete trench filled with concrete instead of sand
BH2-S7	Additional			

LEGEND:

-  BH2-S3 and BH2-S6 reference point, results presented in CAR T2 EPSS1 Vol.1
-  Actual Sampling Point
- TEXT** On-site Measurement of Underground Pipeline/Concrete Trench
-  Segment of underground pipeline not laid in concrete trench
-  Scope of CAR for T2 EPSS1 Vol. 2 (this CAR)





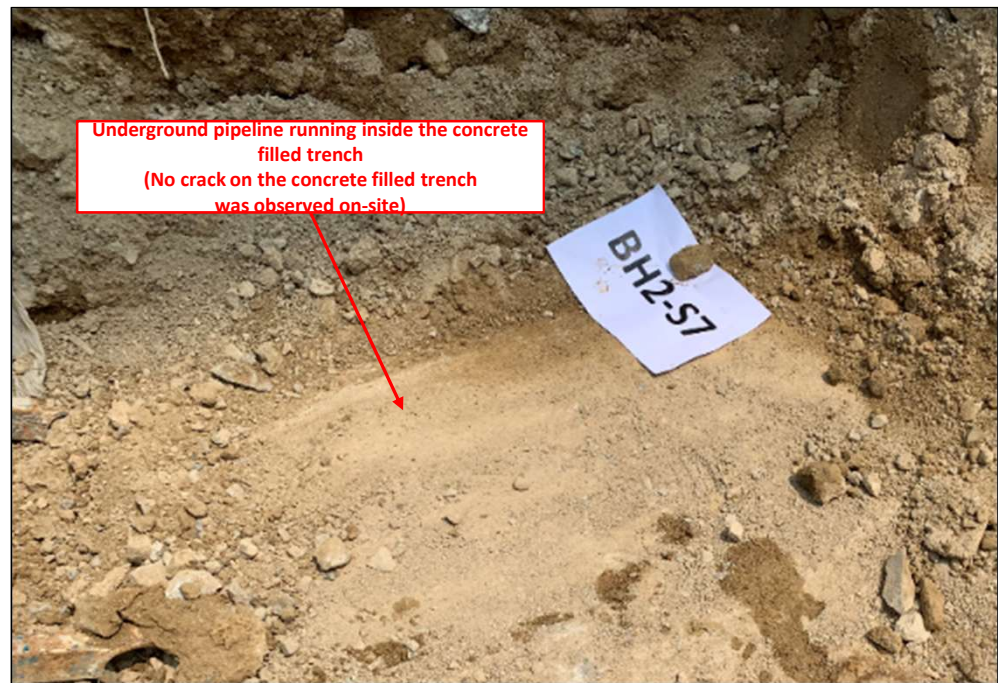
BH2-S4 View 1



BH2-S4 View 2



BH2-S5 View 1



BH2-S7 View 1