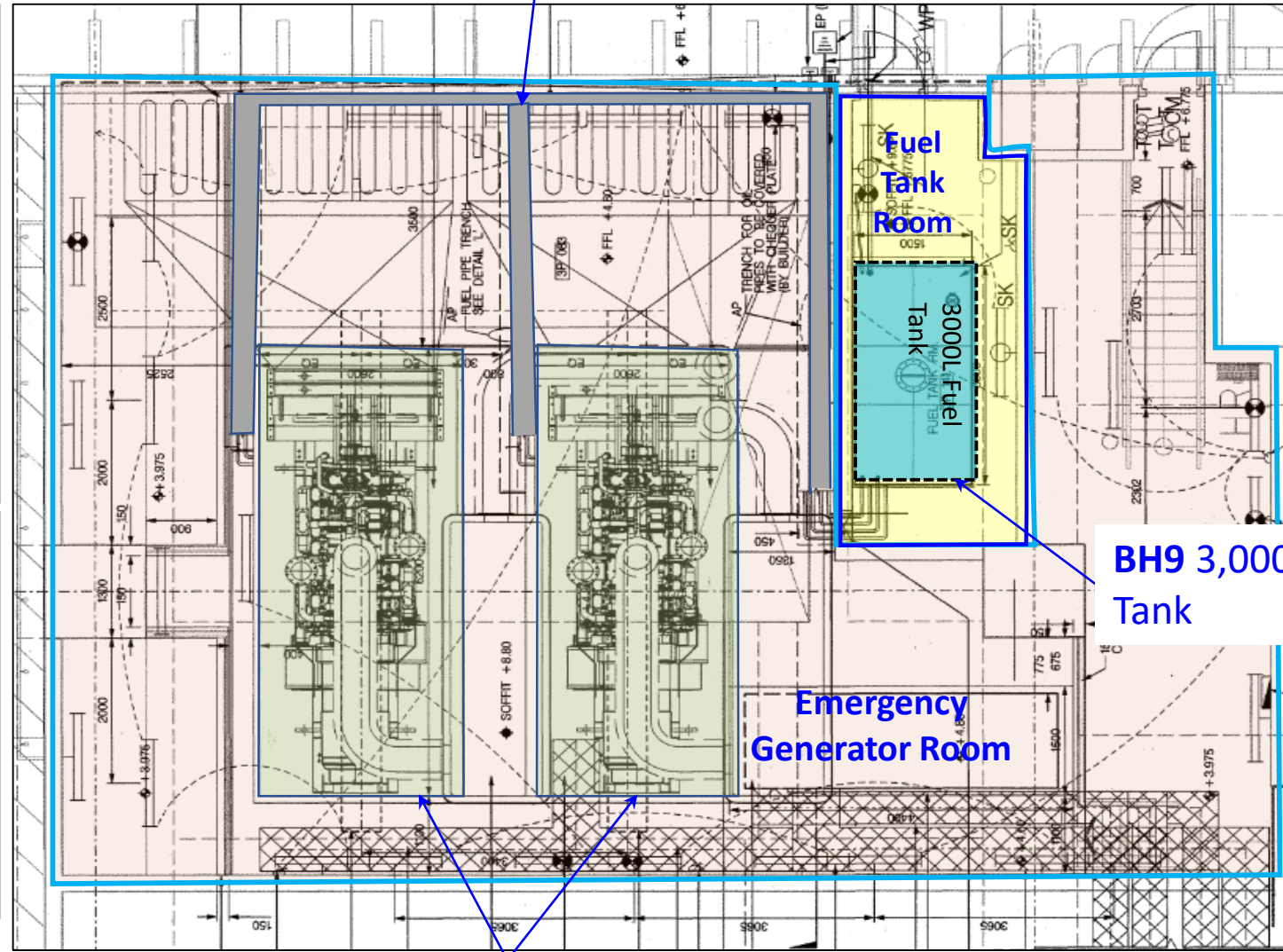
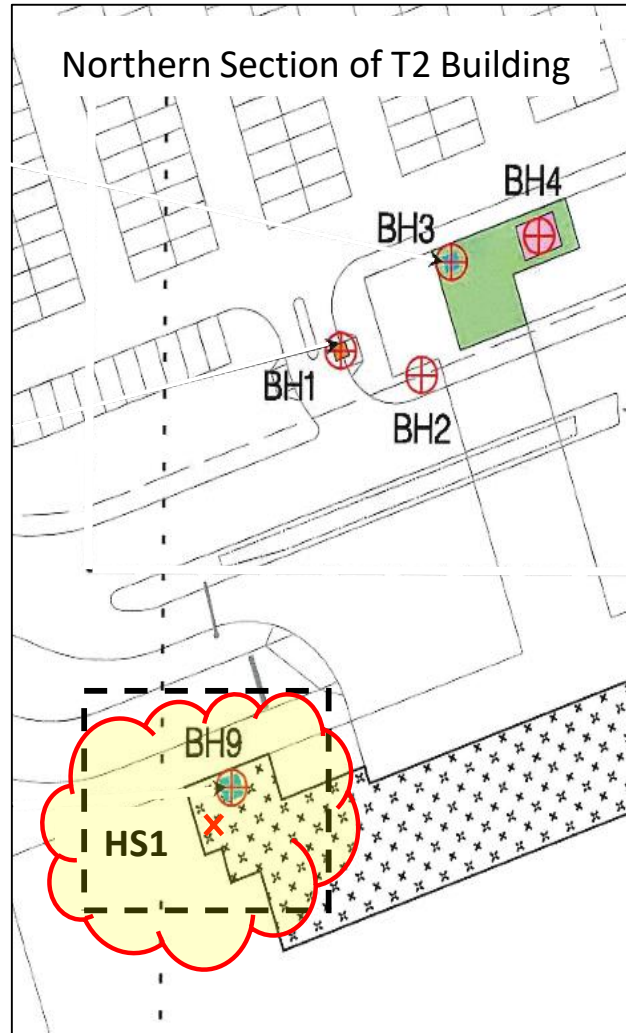


Appendix C.1 Identified Potential Land Contaminated Source of Emergency Power Supply System No.2 (EPSS2) in SCAP



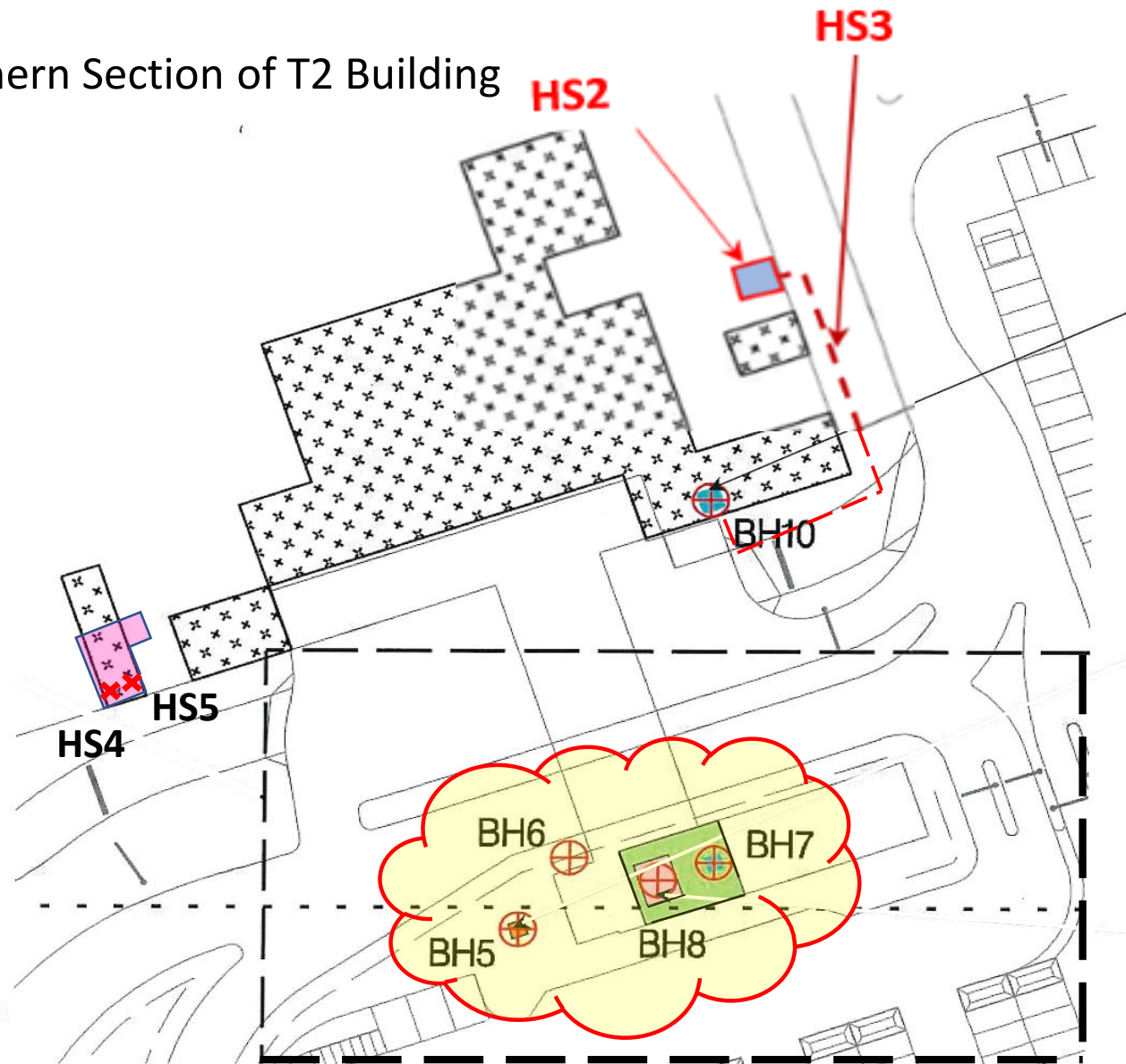
BH9 3,000L Above-ground Fuel Tank

HS1 Emergency Generators  
(Stand on 200mm-thick concrete plinth)

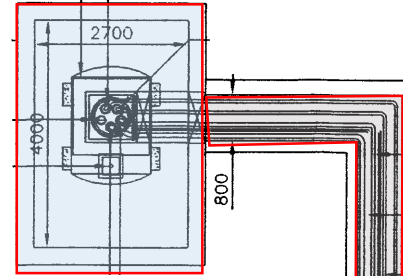
| Reference ID | Description  |
|--------------|--|
| BH9          | A 3,000 L <b>above-ground</b> fuel tank at Fuel Tank Room  |
| HS1          | Two <b>above-ground</b> emergency generators at Emergency Generator Room, connected to 3,000 L above-ground fuel tank (i.e. BH9) |

Appendix C.2 Identified Potential Land Contaminated Source of Emergency Power Supply System No.3 (EPSS3) in SCAP

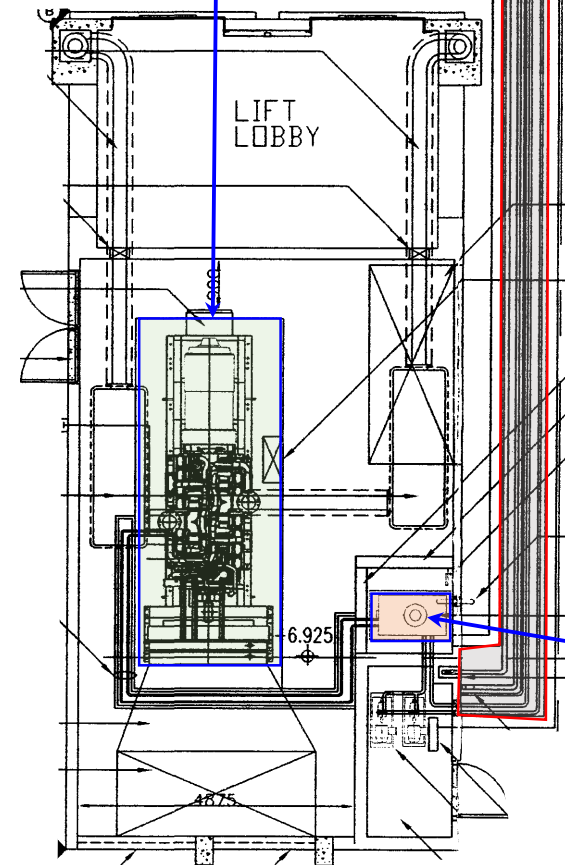
Southern Section of T2 Building



**BH5 3,000L  
Underground Fuel tank**



**BH8 Emergency  
Generator**



**BH6 Underground Fuel  
Pipelines  
Total Length: Approx. 26 m**

**BH7 450L Above-  
ground Fuel Tank**

| Reference ID | Description  |
|--------------|--|
| BH5          | A 3,000 L <b>underground</b> fuel tank   |
| BH7          | A 450 L <b>above-ground</b> fuel tank at Emergency Generator Room  |
| BH6          | 26 m-in-length <b>underground</b> fuel pipelines connecting the 3,000 L underground fuel tank (i.e. BH5) and the 450 L above-ground fuel tank (i.e. BH7) |
| BH8          | An emergency generator at Emergency Generator Room ( <b>above-ground</b> )   |

