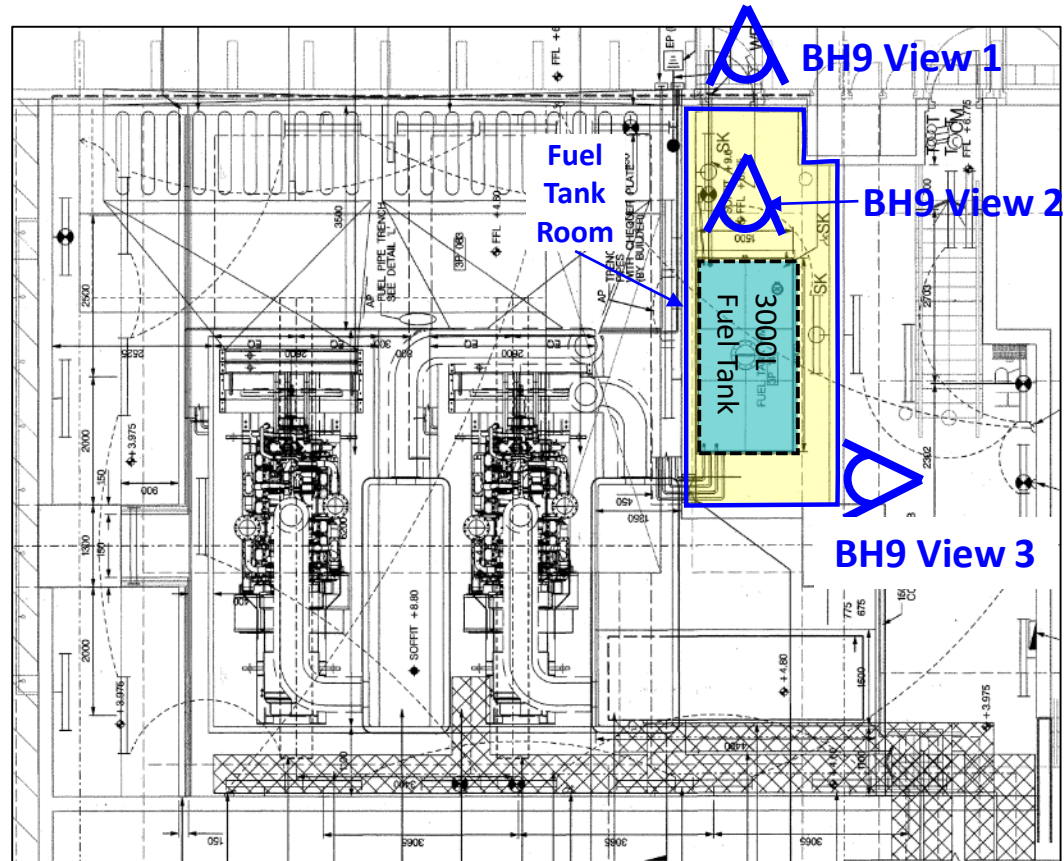


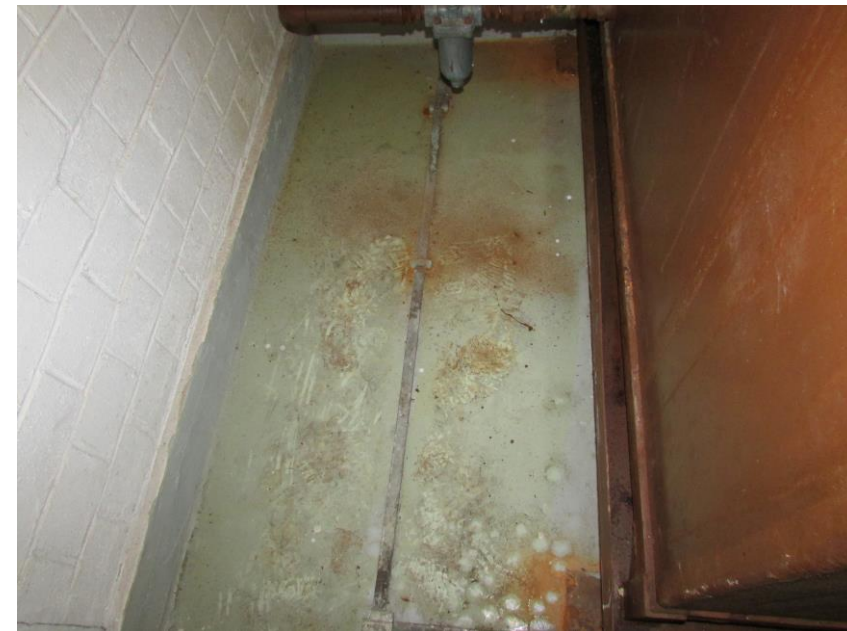
Appendix J1 Site Photo Record of Final Inspection for EPSS2 **BH9** (3000L **Above-ground** Fuel Tank)



BH9 View 1 - 3000L Above-ground Fuel Tank (BH9)

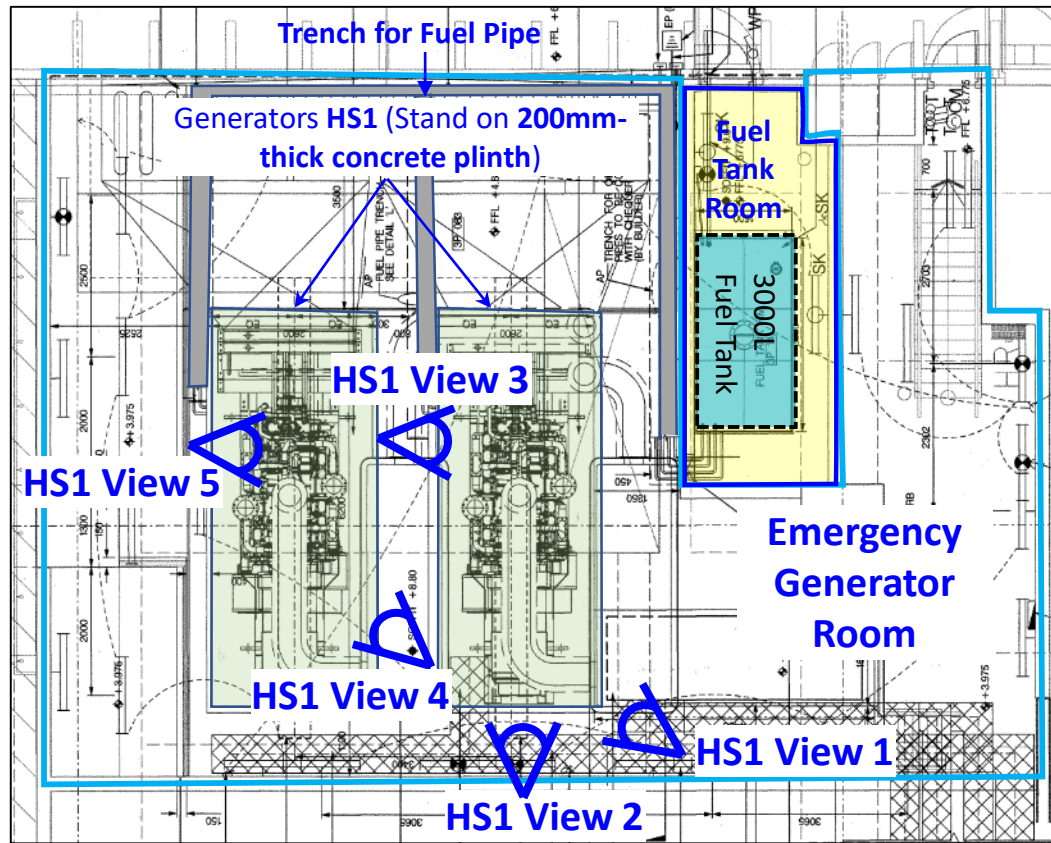


BH9 View 2 - concrete floor condition underneath 3000L Above-ground Fuel Tank



BH9 View 3 - concrete floor condition of fuel tank room with 3000L Above-ground Fuel Tank

Appendix J2 Site Photo Record of Final Inspection for EPSS2 **HS1** (2 **above-ground** Emergency generators connected with 3,000 L **Above-ground** Fuel Tank inside (**BH9**))



HS1 View 1 - concrete floor condition underneath emergency generators



HS1 View 2 - concrete floor condition underneath emergency generators



HS1 View 3 - concrete floor condition underneath emergency generators



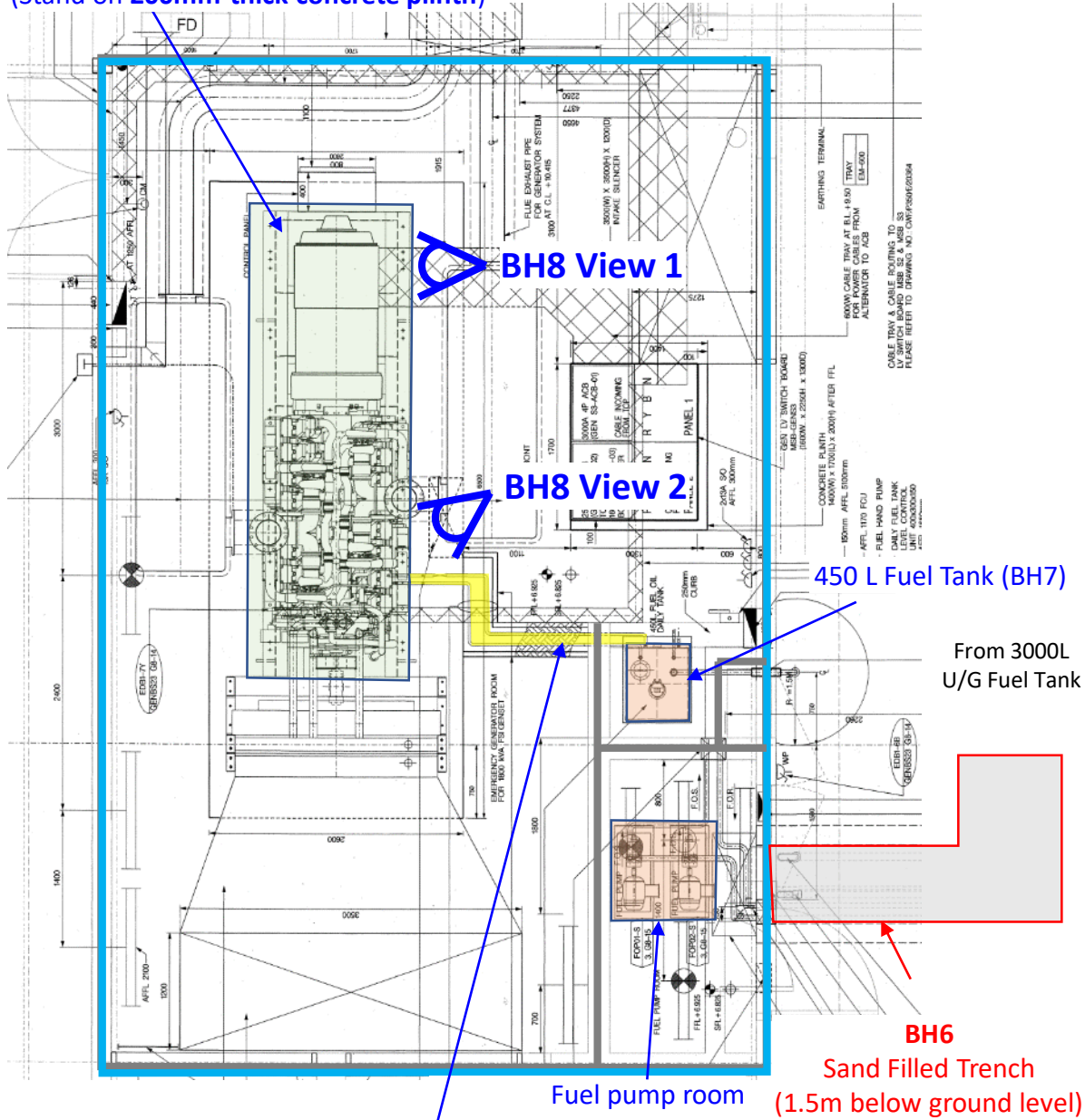
HS1 View 4 - concrete floor condition underneath emergency generators



HS1 View 5 - concrete floor condition underneath emergency generators

Appendix J4 Site Photo Record of Final Inspection for EPSS3 **BH8** (Above-ground Emergency Generator)

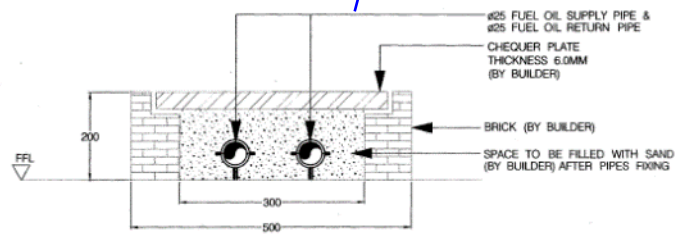
Emergency Generator (BH8)
(Stand on 200mm-thick concrete plinth)



BH8 View 1 - concrete floor condition underneath emergency generator

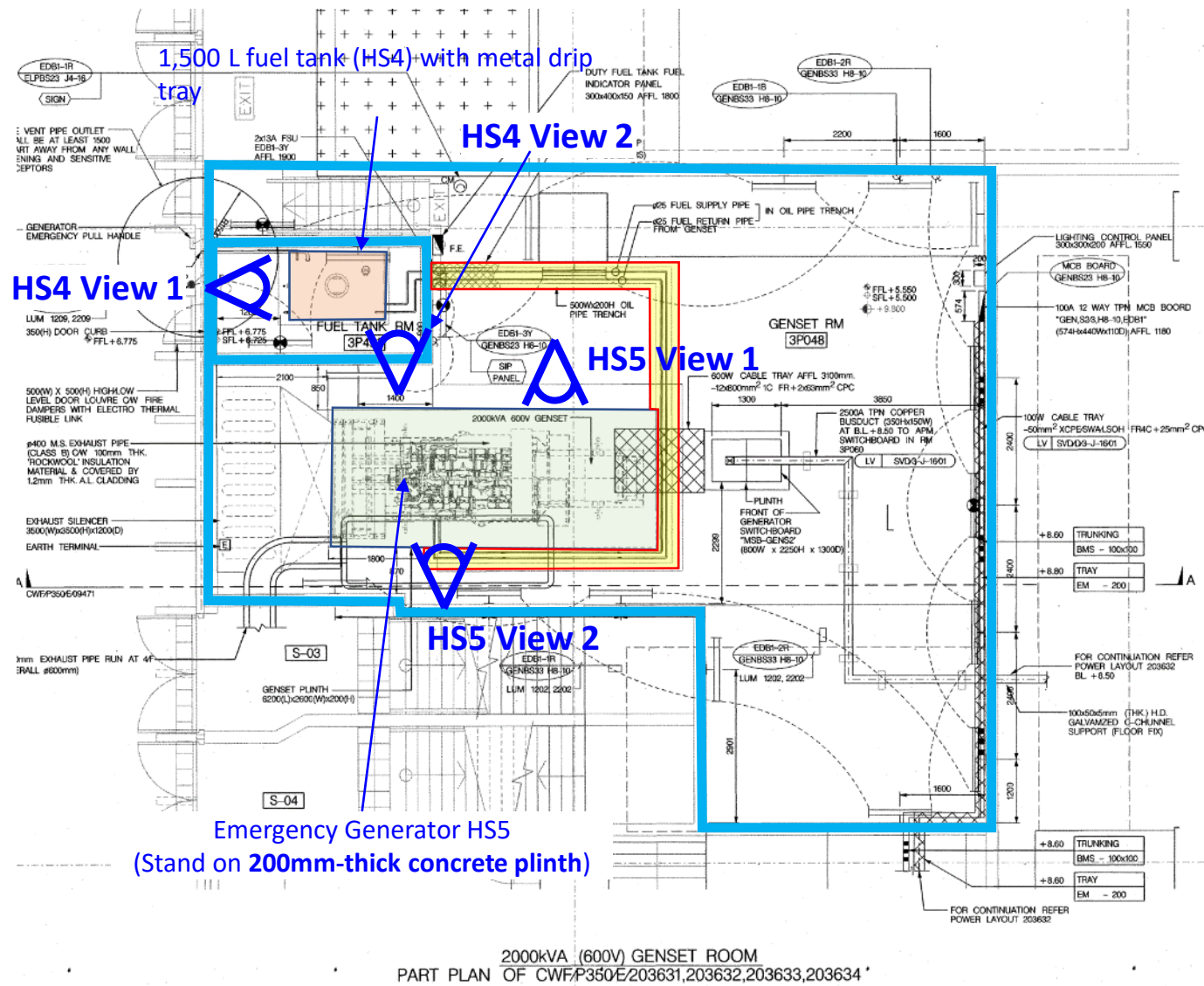


BH8 View 2 - concrete floor condition underneath emergency generator

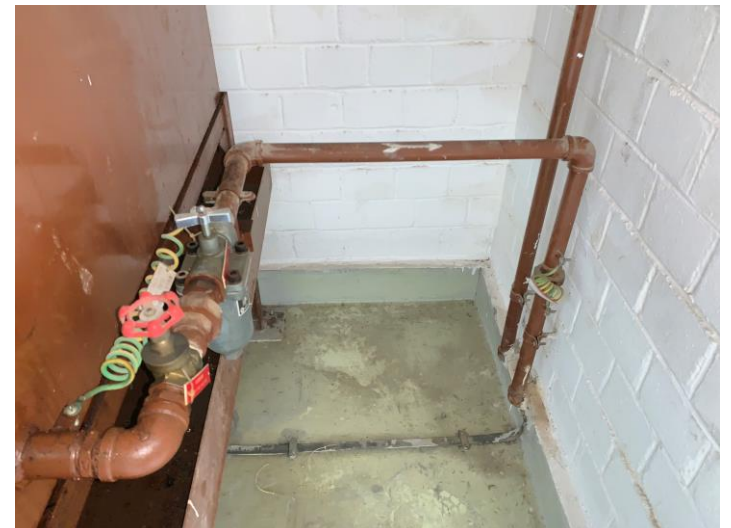


Supply and return pipe from fuel oil tank
(Sand Filled Trench at floor level)

Appendix J5 Site Photo Record of Final Inspection for EPSS5 **HS4** (Above-ground Fuel Tank) and **HS5** (Above-ground Emergency Generator)



HS4 View 1 - concrete floor condition underneath 1,500L Above-ground Fuel Tank



HS4 View 2 - concrete floor condition of fuel tank room with 1,500 L above-ground fuel tank



HS5 View 1 - concrete floor condition underneath emergency generator



HS5 View 2 - concrete floor condition underneath emergency generator