


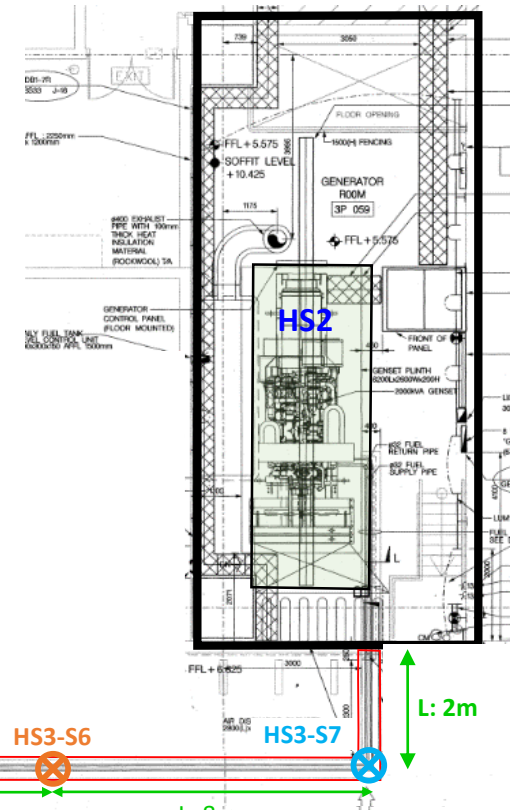
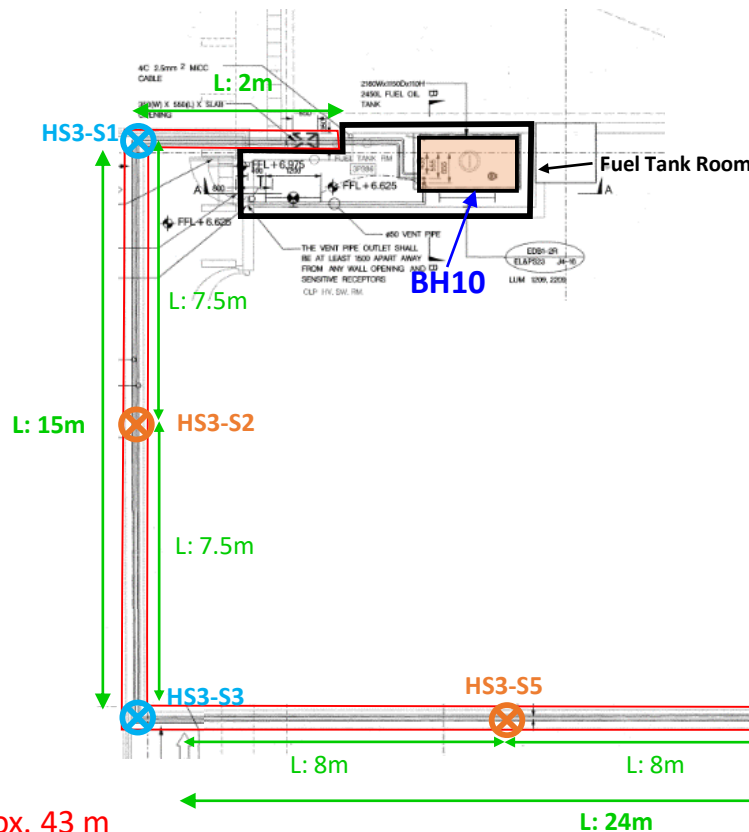
Appendix E.1 Actual Sampling Point of the Underground Pipeline Trench of EPSS4 (i.e. **HS3-S1**, **HS3-S3**, **HS3-S7**)

<u>Annotation of Sampling Point</u>	<u>Type of Sampling Point</u>	<u>Sampling Elevation</u>	<u>Type of Sample</u>	<u>Remarks</u>
HS3-S1	Curvature	Right underneath	Soil	Same sampling point selection in SCAP
HS3-S3	Curvature	concrete trench corner		
HS3-S7	Curvature	corner		

LEGEND:
 Sampling Point proposed in SCAP with photo record taken on 15 Sep 2020

 Actual Sampling Point

TEXT On-site Measurement of Underground Pipeline/ Concrete Trench



HS3
 Total Length: Approx. 43 m

Actual Sampling Point of Underground Pipeline Trench of Emergency Power Supply System No.4 (i.e. **HS3**)

Appendix E.2 Site Photo Record of Underground Pipeline Trench of EPSS4 at [HS3-S2](#), [HS3-S5](#) and [HS3-S6](#) (Photo Record)

