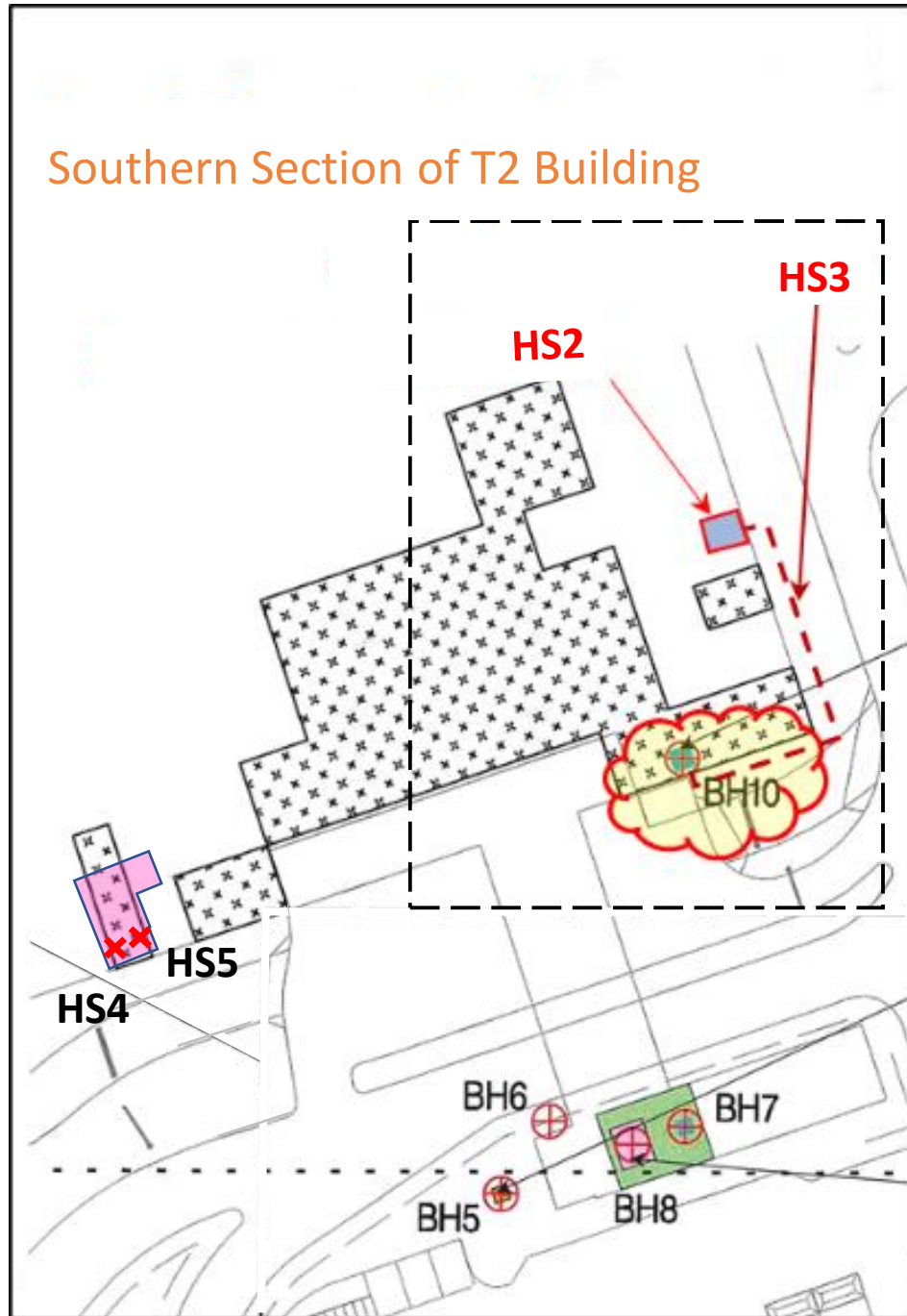
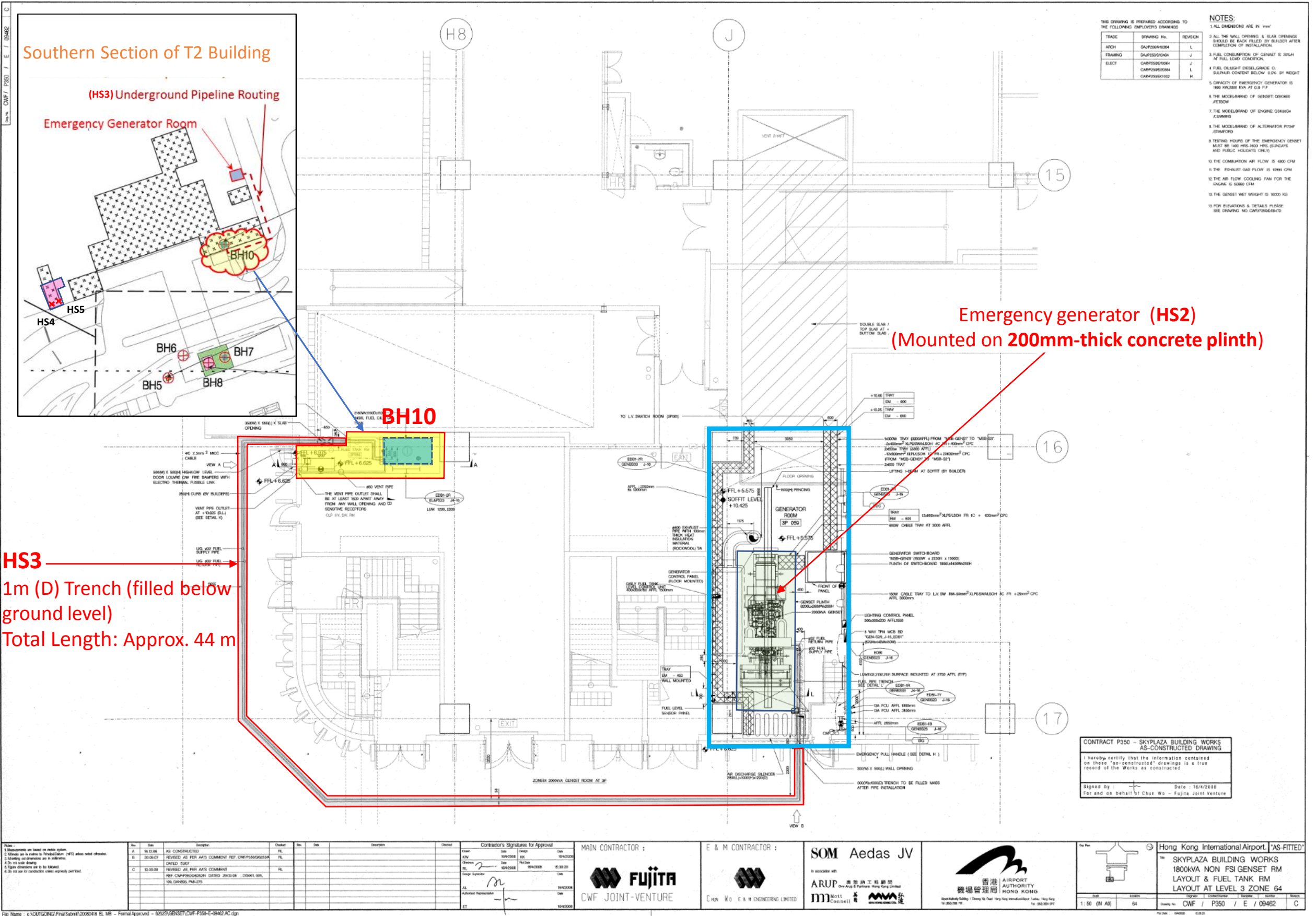


Appendix E.4 Emergency Power Supply System No. 4 (**BH10**, **HS2** and **HS3**)



<u>Reference ID</u>	<u>Description</u>
<b>BH10</b>	A 1,500 L <b>above-ground</b> fuel tank at Fuel Tank Room
<b>HS2</b>	<b>(Newly Identified)</b> An emergency generator at Emergency Generator Room ( <b>above-ground</b> )
<b>HS3</b>	<b>(Newly Identified)</b> 44 m-in-length <b>underground</b> fuel pipelines connecting the 1,500 L above-ground fuel tank (i.e. BH10) and the emergency generator (i.e. HS2)

Appendix E.4 Emergency Power Supply System No. 4 - **BH10** (1,500L Above-ground Fuel Tank inside T2), **HS2** (Newly Identified emergency generator at Emergency Generator Room) and **HS3** (underground fuel pipelines connecting **BH10** and **HS2**)



No.	Date	Description	Checked	By	Date	Description	Checked
A	16.12.06	AS CONSTRUCTED	RL				
B	30.09.07	REVISED AS PER AIA'S COMMENT REF. CWF/P350/04/05/06	RL				
C	12.03.08	REVISED AS PER AIA'S COMMENT REF. CWF/P350/04/05/06 DATED 29.02.08	RL				

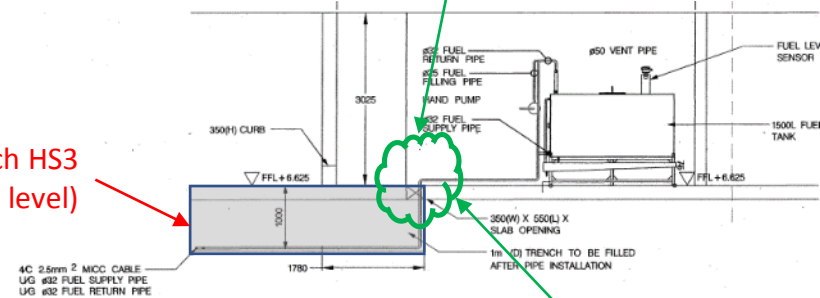
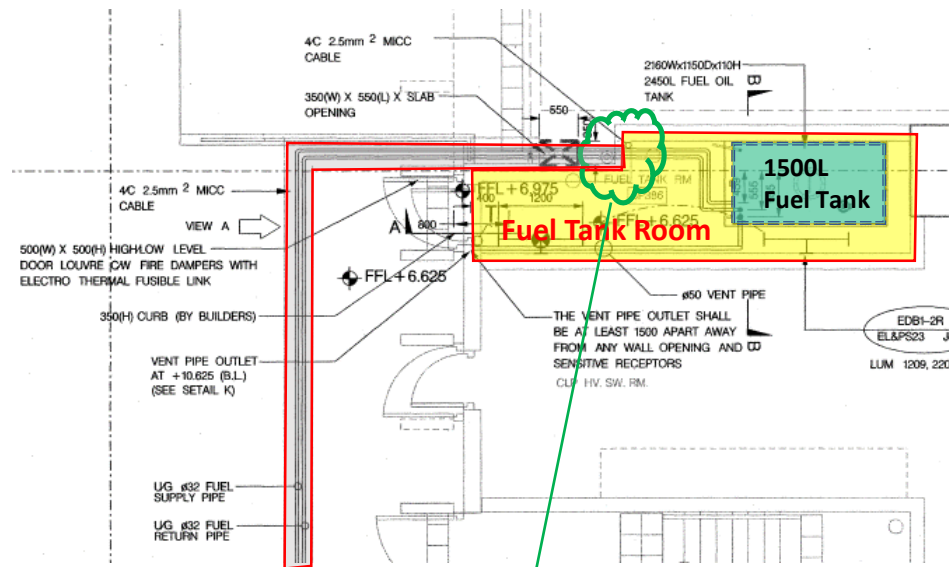
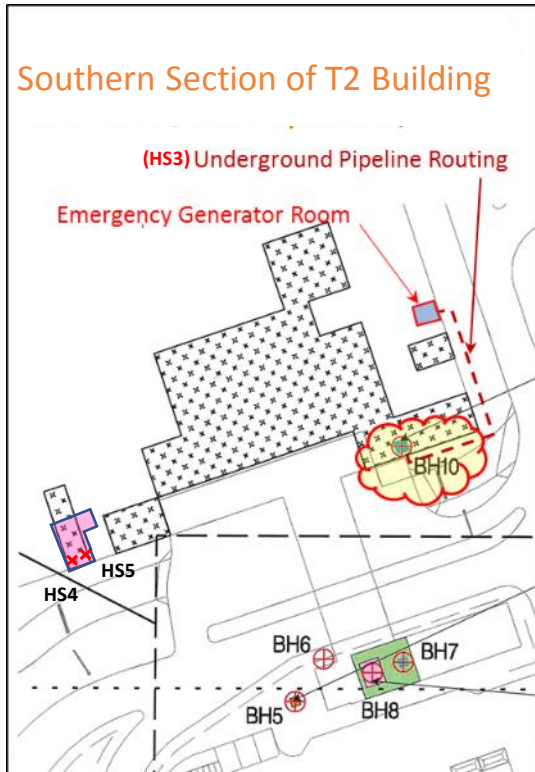
  

Contractor's Signatures for Approval			
Design	Check	Date	Signature
Design	Check	16/12/06	[Signature]
Design	Check	16/12/06	[Signature]
Design	Check	16/12/06	[Signature]

<b>MAIN CONTRACTOR :</b>  <b>FUJITA</b> CWF JOINT-VENTURE	<b>E &amp; M CONTRACTOR :</b>  <b>CHEN WO E &amp; H ENGINEERING LIMITED</b>	<b>SOM Aedas JV</b> In association with <b>ARUP</b> Mott Macdonald 	 <b>Hong Kong International Airport, 'AS-FITTED'</b> SKYPLAZA BUILDING WORKS 1800KVA NON FSI GENSET RM LAYOUT AT LEVEL 3 ZONE 64
--	---	---	--

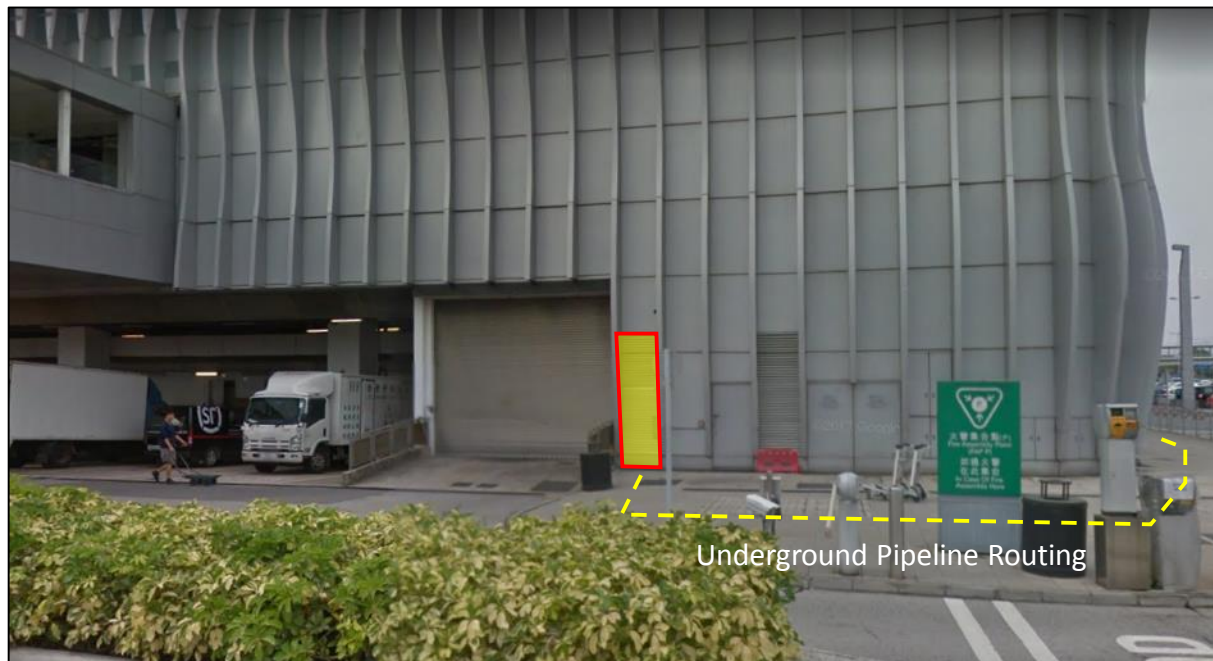
Appendix E.4 Emergency Power Supply System No. 4 - Details of **BH10** (1,500L Above-ground Fuel Tank inside T2) and **HS3** (**Newly identified underground** fuel pipelines connecting **BH10** and **HS2**)



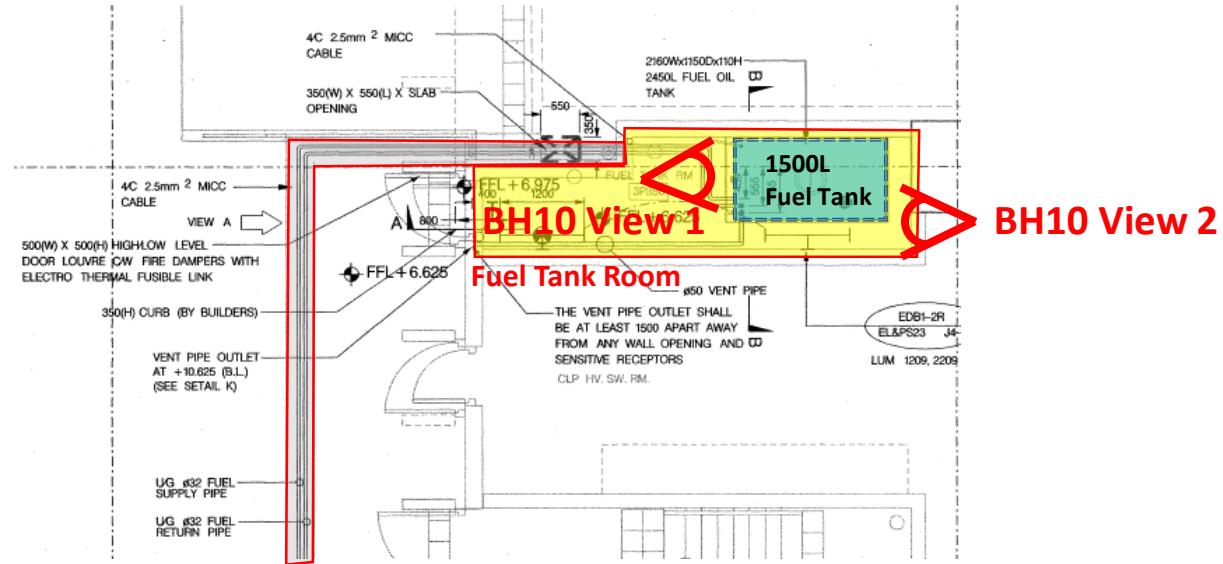
1m (D) Trench HS3 (filled below ground level)



1,500L fuel tank (BH10) with metal drip tray



Appendix E.4 Emergency Power Supply System No. 4 - Details of **BH10** (1,500L **Above-ground** Fuel Tank inside T2)

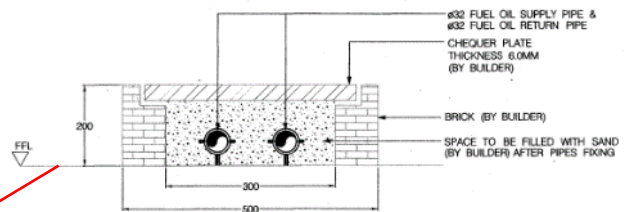
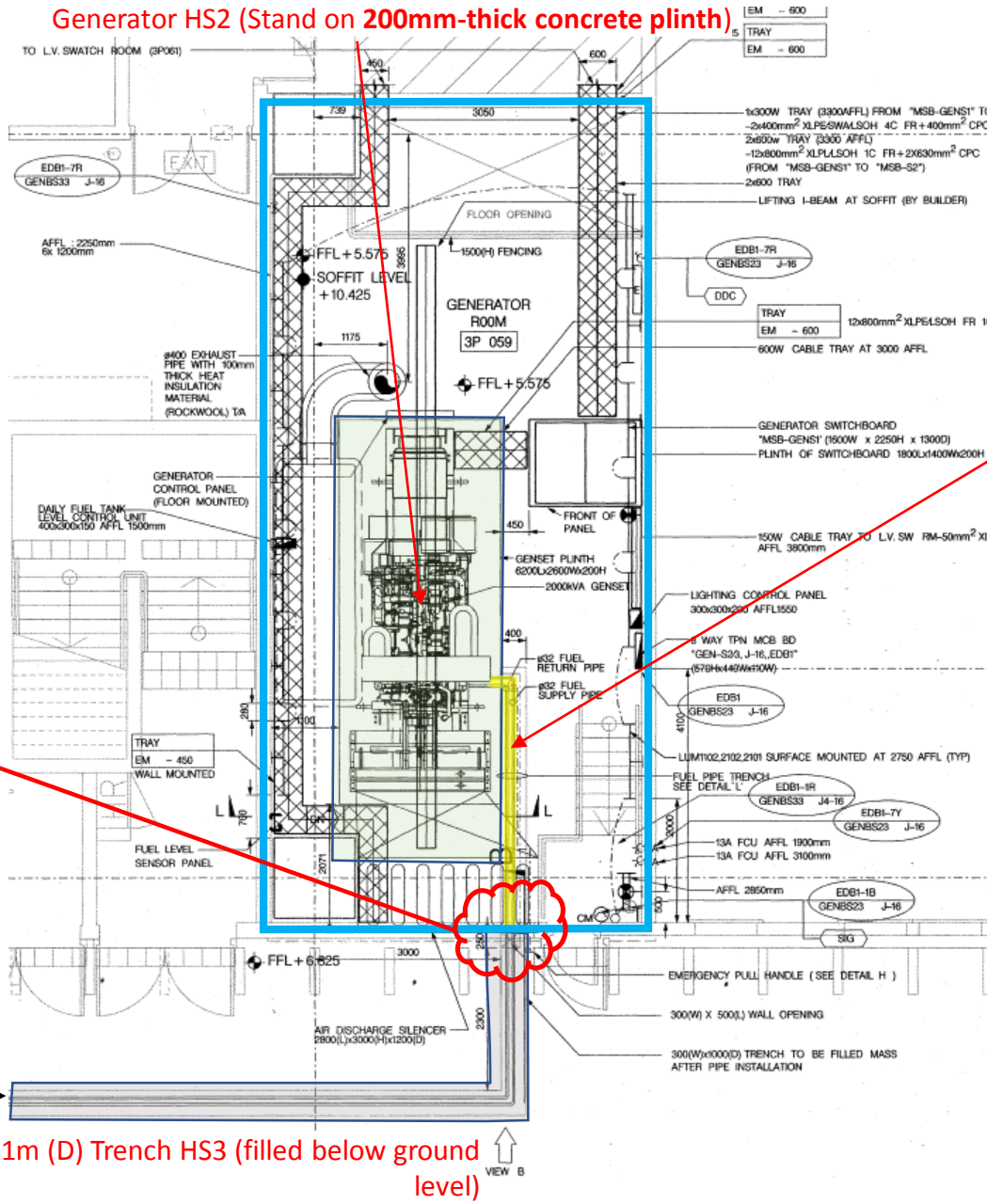


**BH10 View 1** - concrete floor condition underneath 1,500L Above-ground Fuel Tank

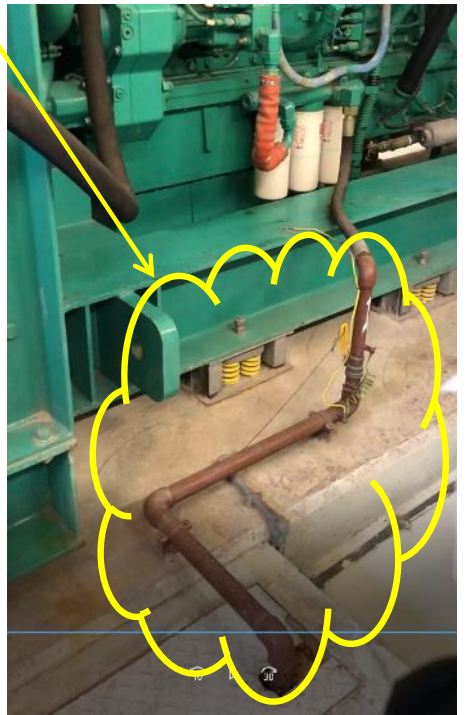
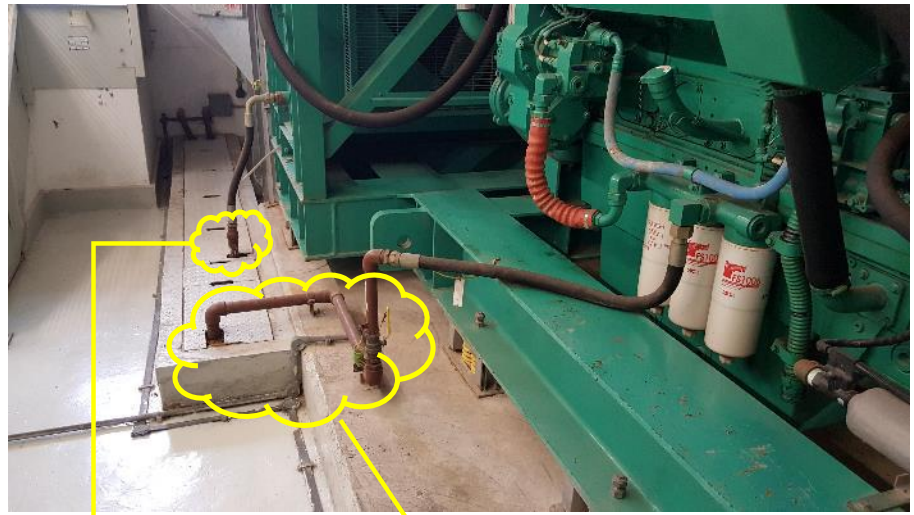


**BH10 View 2** - concrete floor condition underneath 1,500L Above-ground Fuel Tank

Appendix E.4 Emergency Power Supply System No. 4 – Details of **HS2** (Emergency Generator connected to 1,500L **Above-ground** Fuel Tank inside T2 (**BH10**))

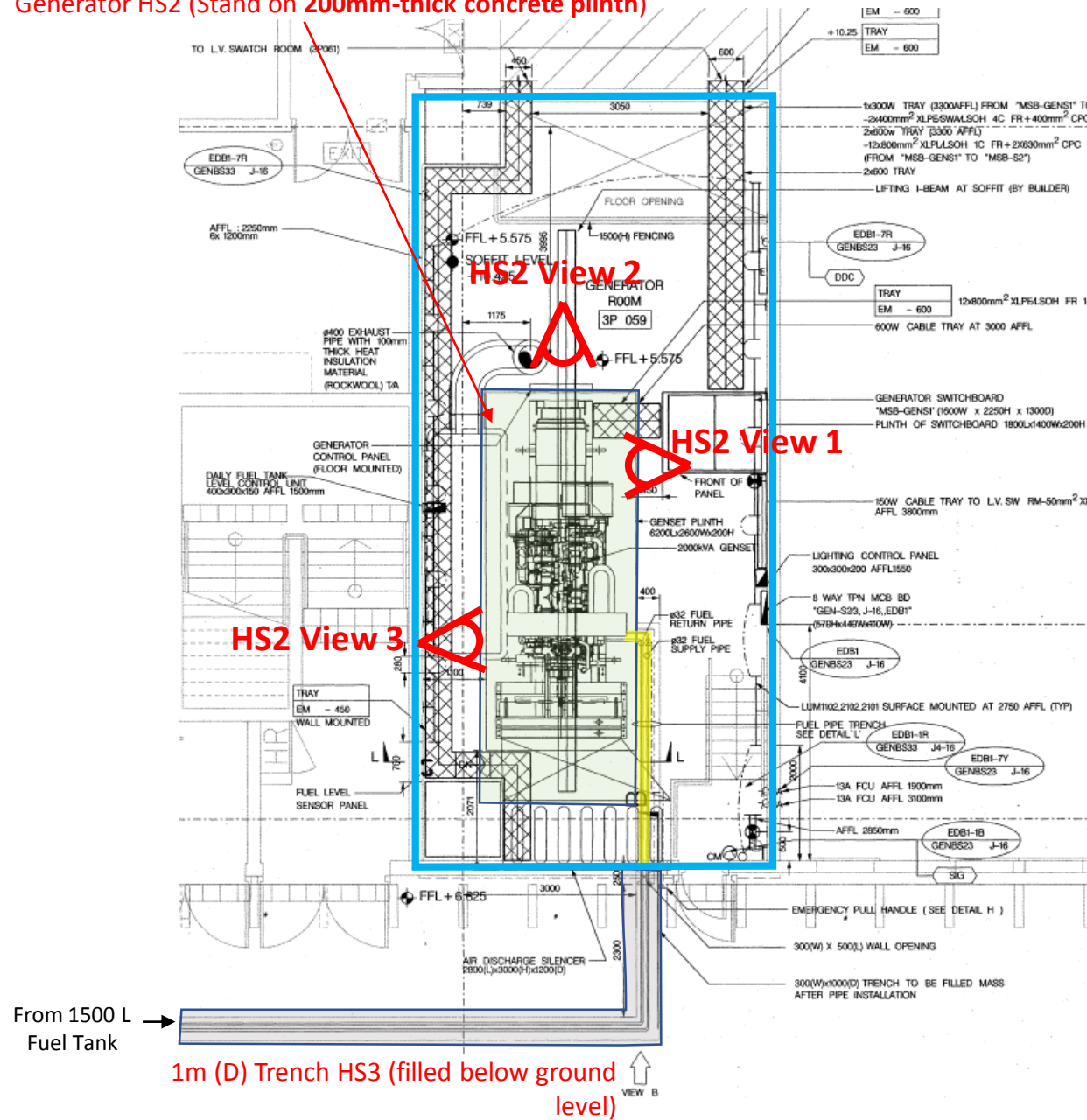


Supply and return pipe from fuel oil tank (Sand Filled Trench at floor level)



# Appendix E.4 Emergency Power Supply System No. 4 – Details of HS2 (Emergency Generator connected to 1,500L Above-ground Fuel Tank inside T2 (BH10))

Generator HS2 (Stand on 200mm-thick concrete plinth)



HS2 View 1 - concrete floor condition underneath emergency generator



HS2 View 2 - concrete floor condition underneath emergency generator



HS2 View 3 - concrete floor condition underneath emergency generator