



806000 E

808000 E

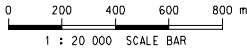
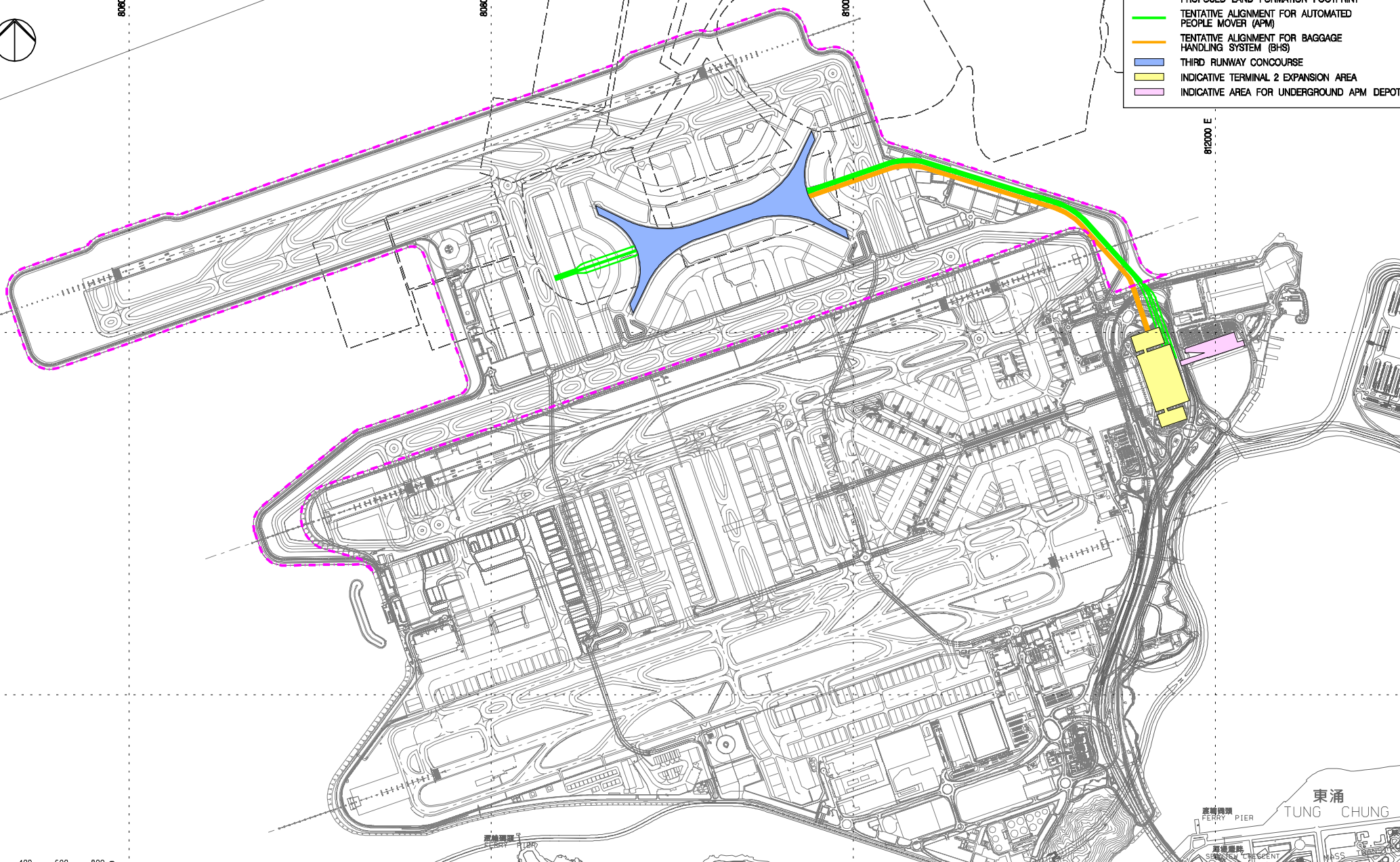
810000 E

812000 E

820000 N

818000 N

- LEGEND:**
- PROPOSED LAND FORMATION FOOTPRINT
  - TENTATIVE ALIGNMENT FOR AUTOMATED PEOPLE MOVER (APM)
  - TENTATIVE ALIGNMENT FOR BAGGAGE HANDLING SYSTEM (BHS)
  - THIRD RUNWAY CONCOURSE
  - INDICATIVE TERMINAL 2 EXPANSION AREA
  - INDICATIVE AREA FOR UNDERGROUND APM DEPOT



Copyright in this document and all proprietary rights in the information it contains belong to the AA. It is a condition of the supply of this document, in whatever form, that the recipient shall hold it in confidence and shall not duplicate or otherwise reproduce it in whole or in part, nor disclose its contents without the written consent of the AA.

Rev.	Date	Description	Checked
A	02DEC15	FIRST ISSUE	EY
B	06FEB17	GENERAL REVISION	EY



**KEY PROJECT COMPONENTS – PASSENGER FACILITIES**

Consultant's Signatures for Approval		Date	EXPANSION OF HONG KONG INTERNATIONAL AIRPORT INTO A THREE-RUNWAY SYSTEM
Design	DC	08FEB17	
Checkers	DC / TK	08FEB17	
Approver	EC	08FEB17	MCL / P132 / EMA / 1-003

Drawing No. Scale at A3 1 : 20000

Rev. B