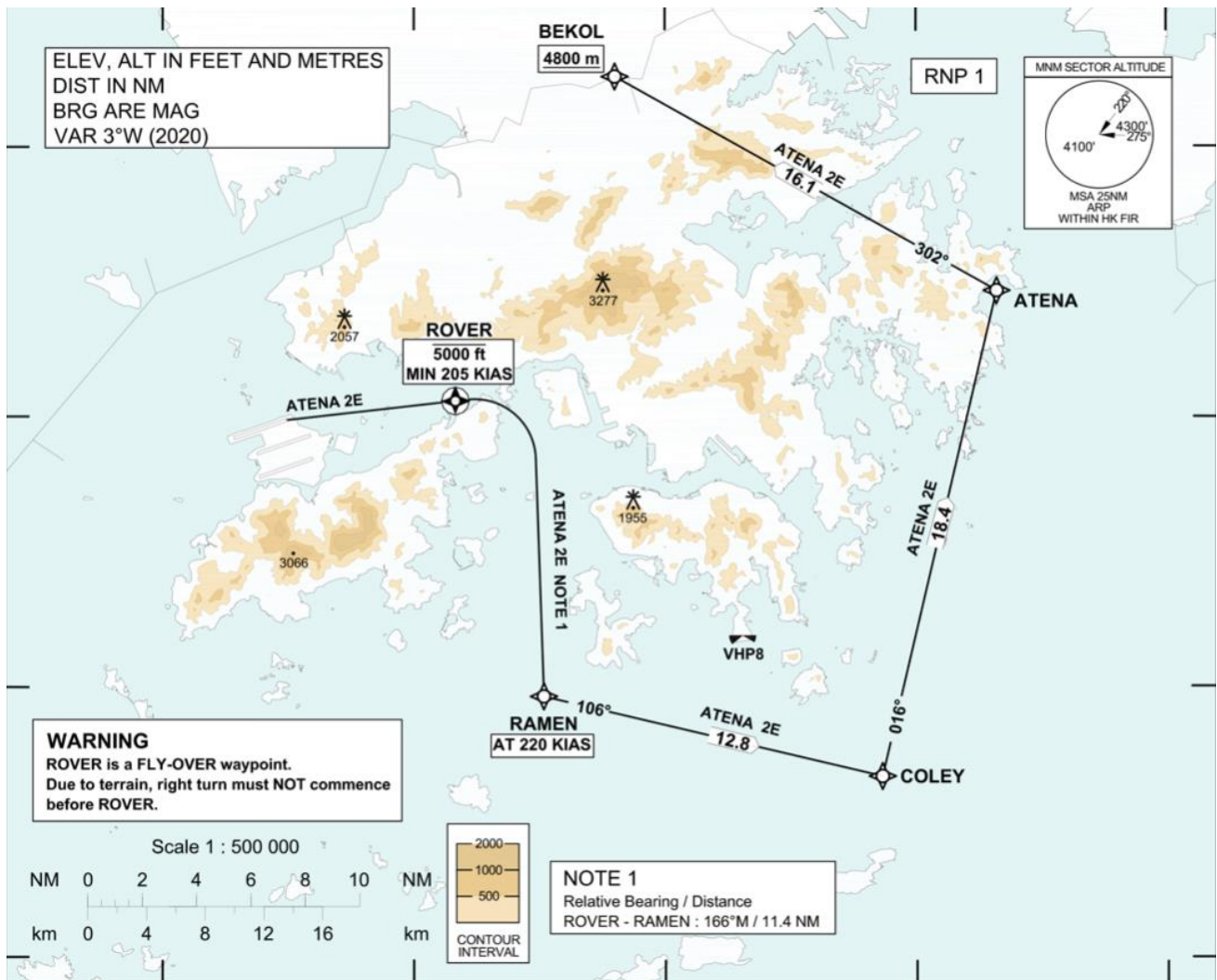
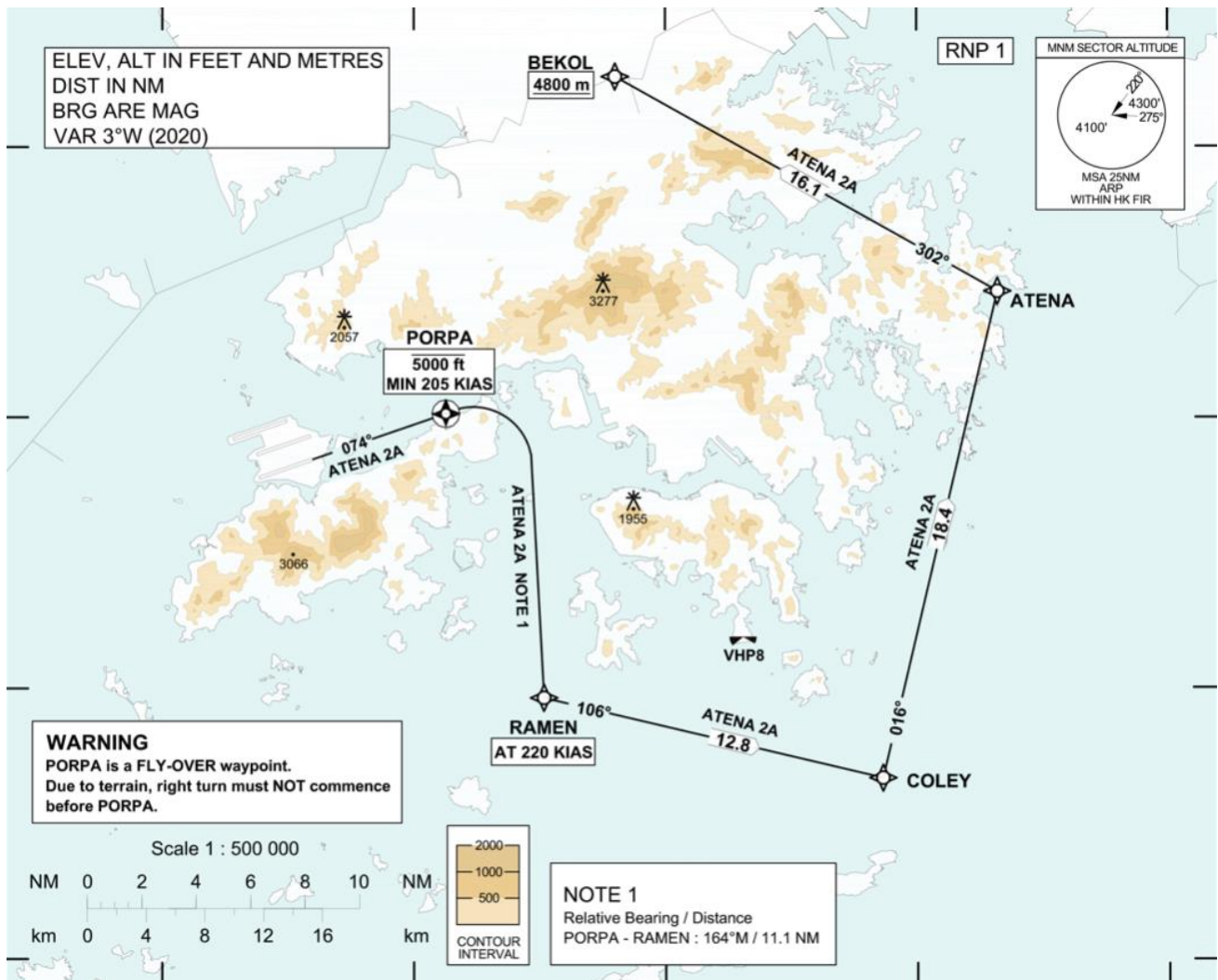


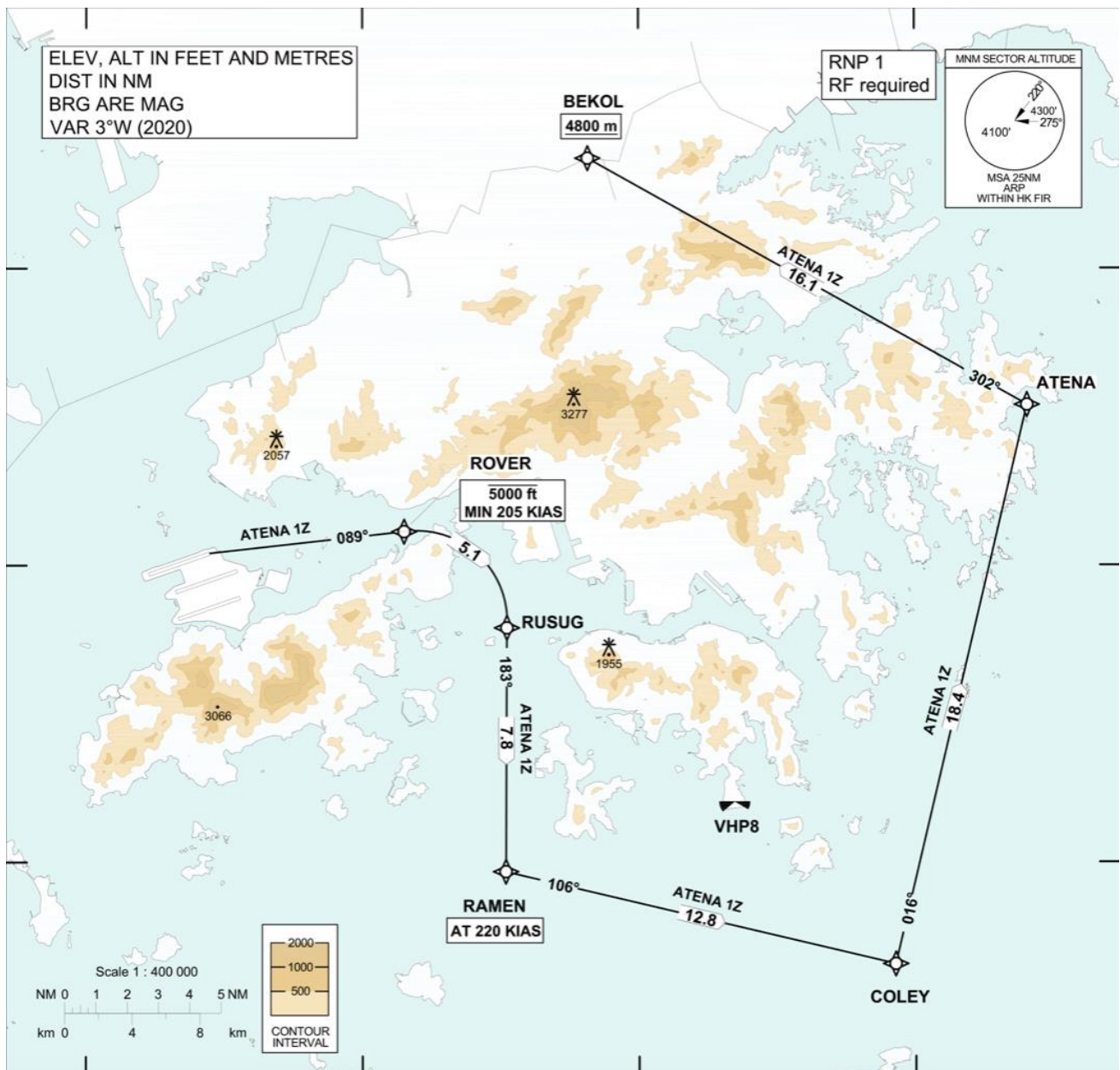
C. Enlarged Plans of Figure 3.2



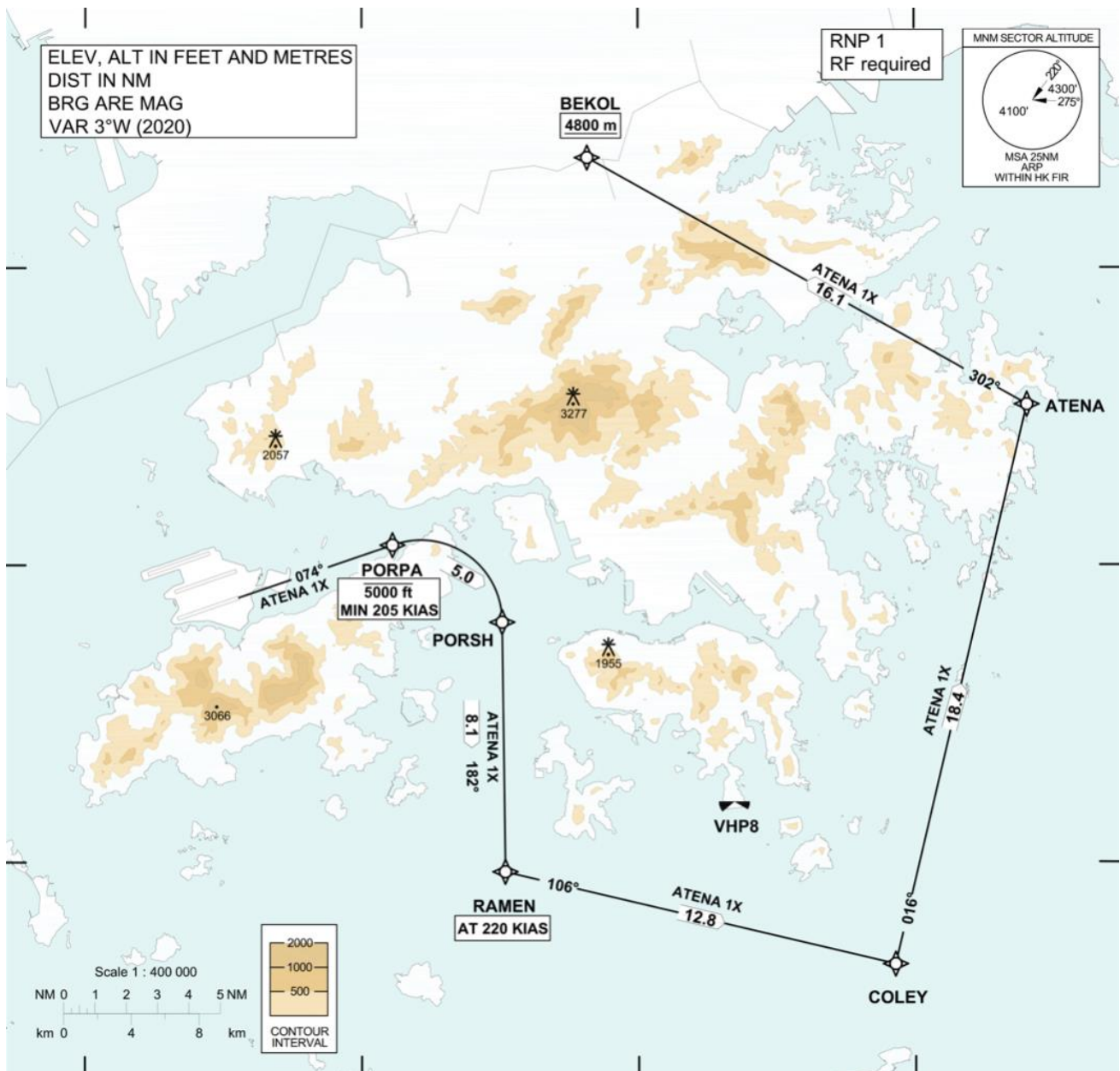
Runway 07L noise mitigating northbound route via West Lamma Channel for I-2RS



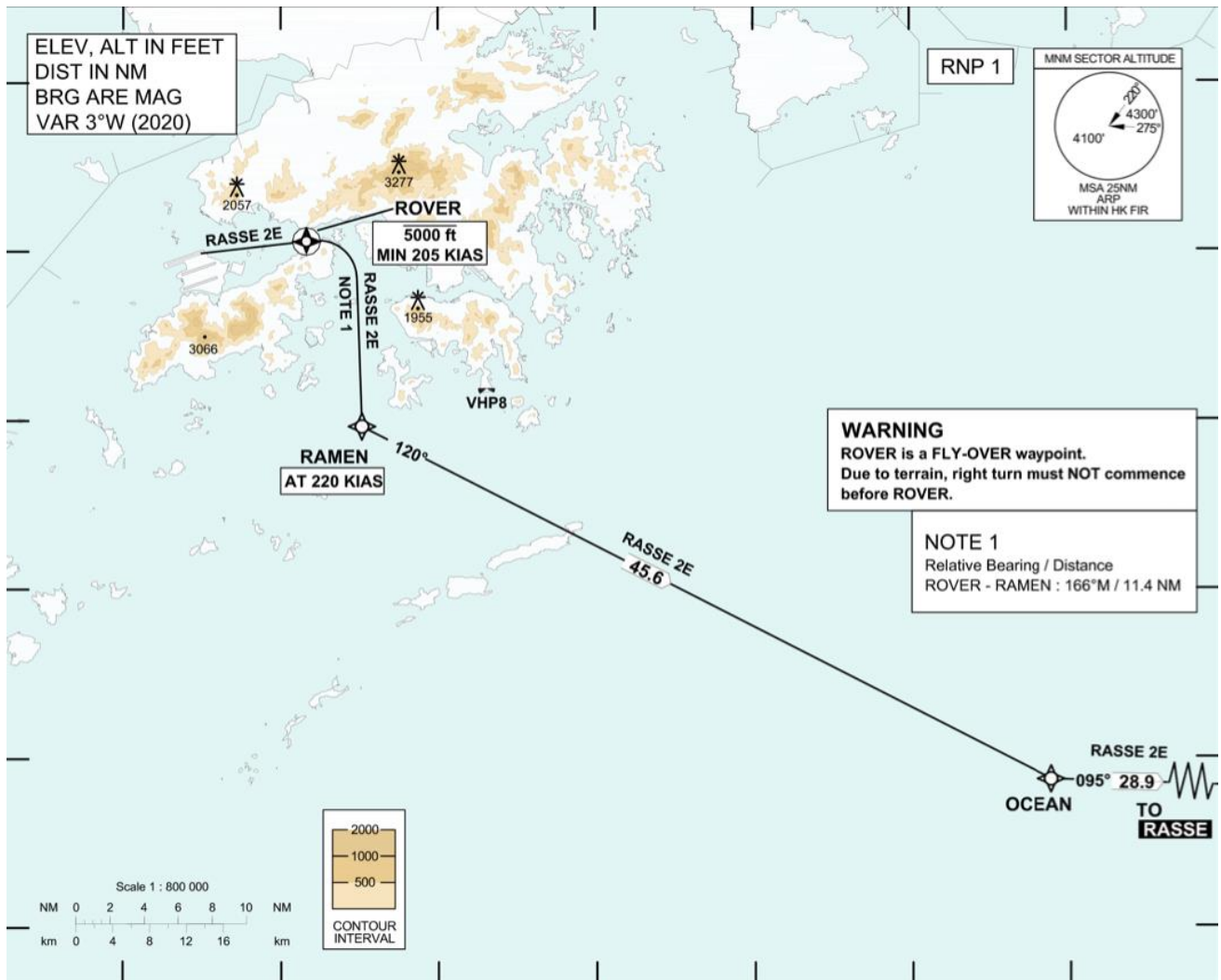
Runway 07R noise mitigating northbound route via West Lamma Channel for I-2RS



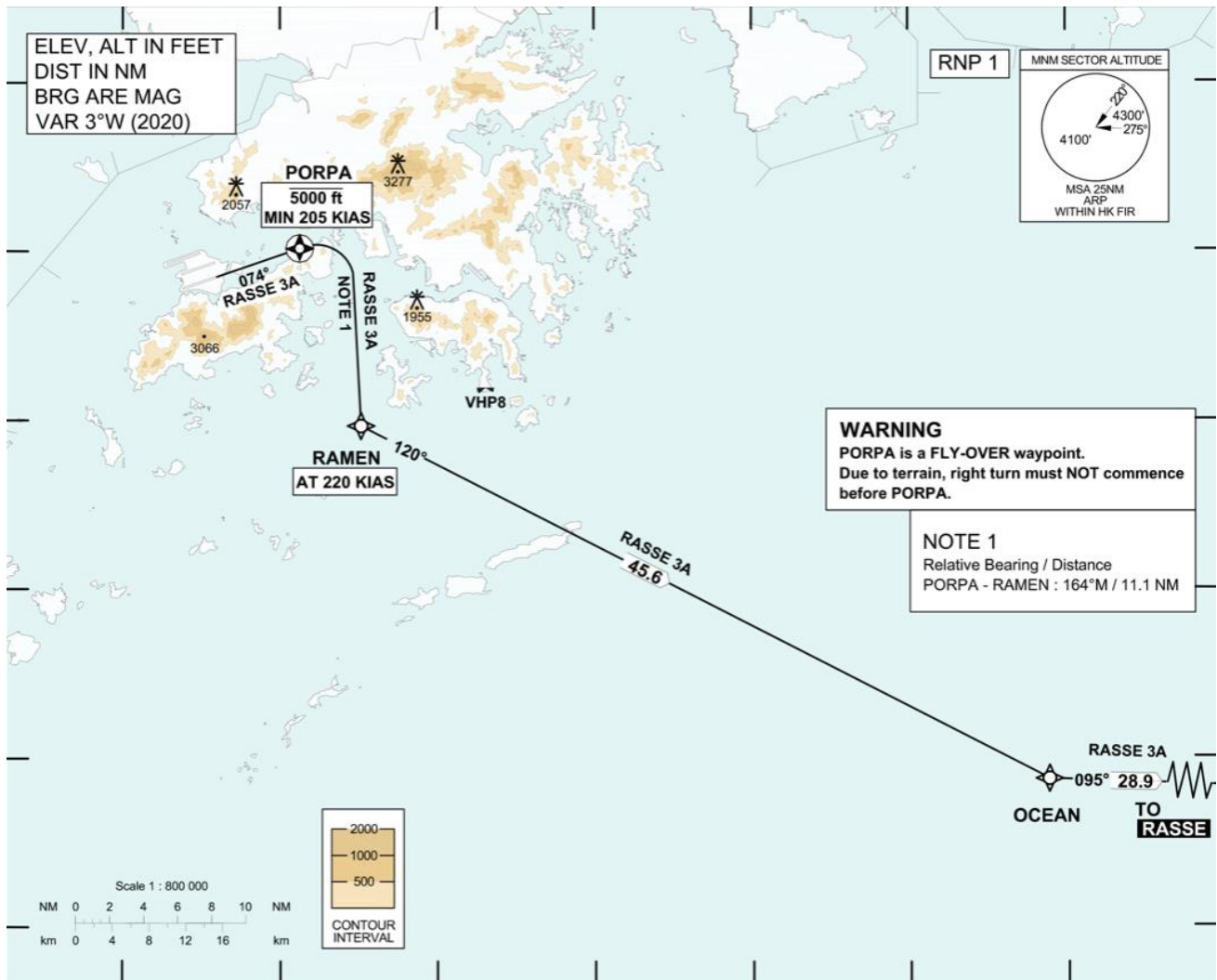
Runway 07L noise mitigating northbound route via West Lamma Channel for I-2RS
for RF-capable aircraft



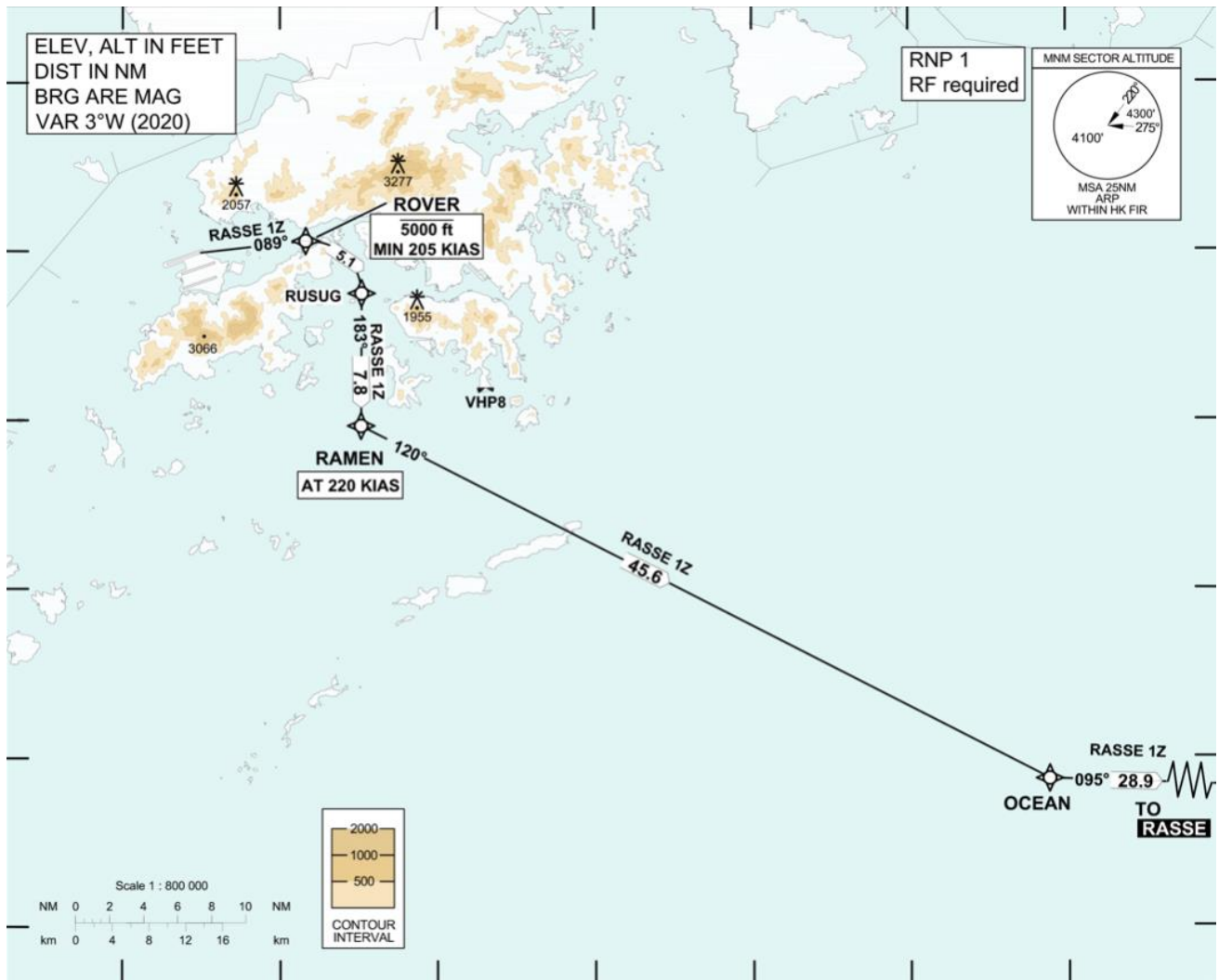
Runway 07R noise mitigating northbound route via West Lamma Channel for I-2RS
 for RF-capable aircraft



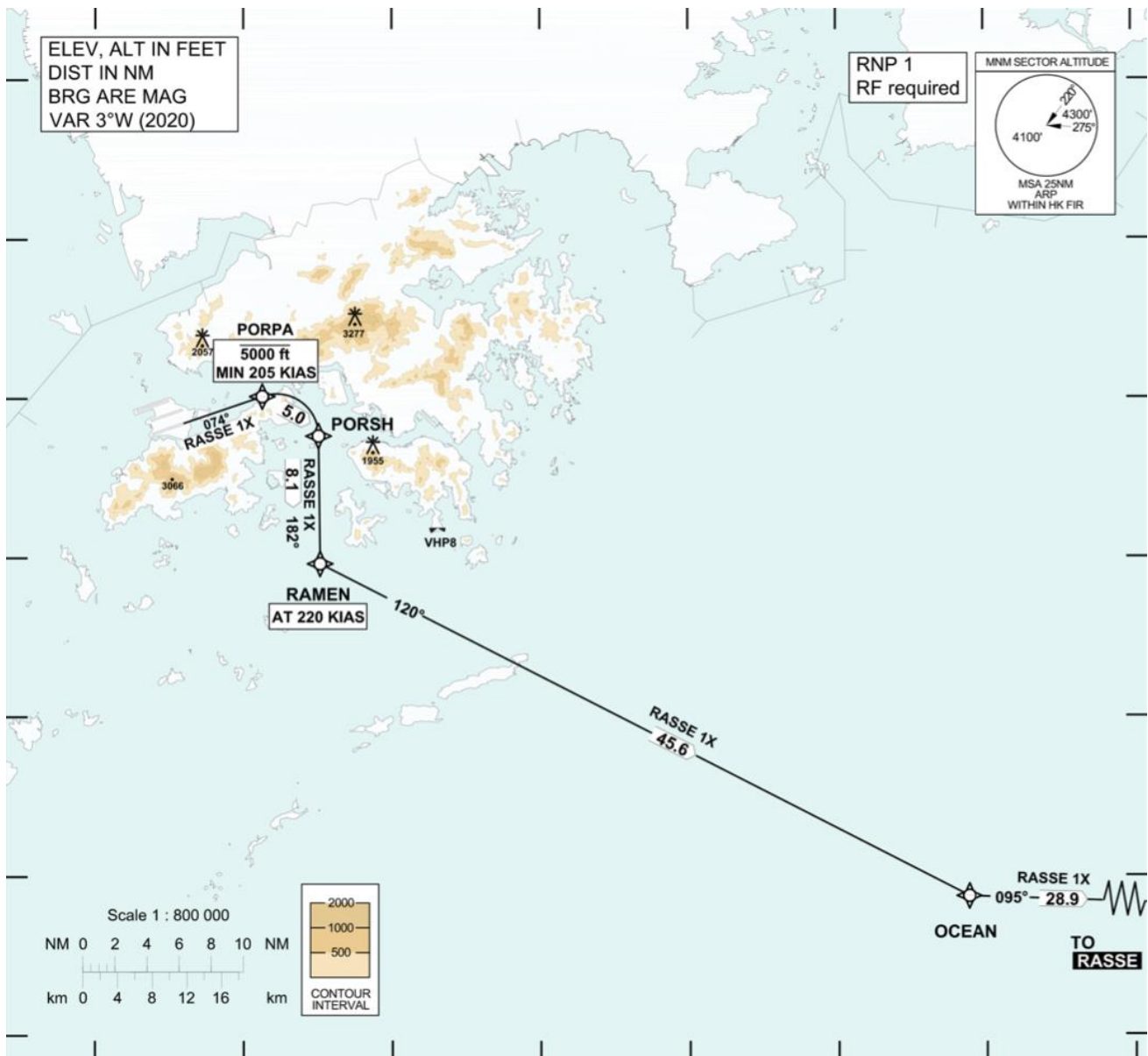
Runway 07L noise mitigating eastbound route via West Lamma Channel for I-2RS



Runway 07R noise mitigating eastbound route via West Lamma Channel for I-2RS



Runway 07L noise mitigating eastbound route via West Lamma Channel for I-2RS
 for RF capable aircraft



Runway 07R noise mitigating eastbound route via West Lamma Channel for I-2RS for RF capable aircraft

Note: Please refer to the latest publications on the Hong Kong Aeronautical Information Services website (<https://www.ais.gov.hk/>) for operational details and up-to-date information.