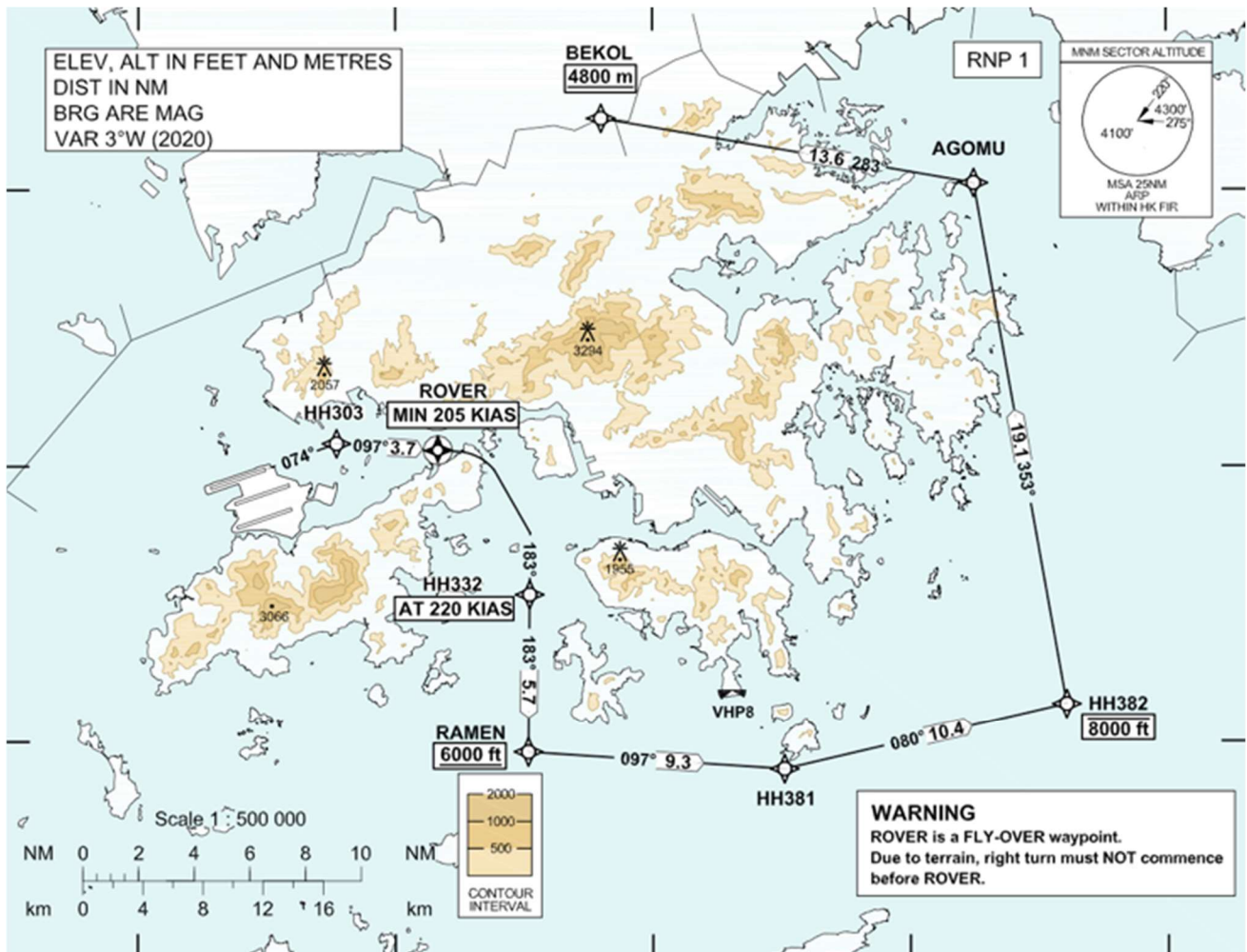
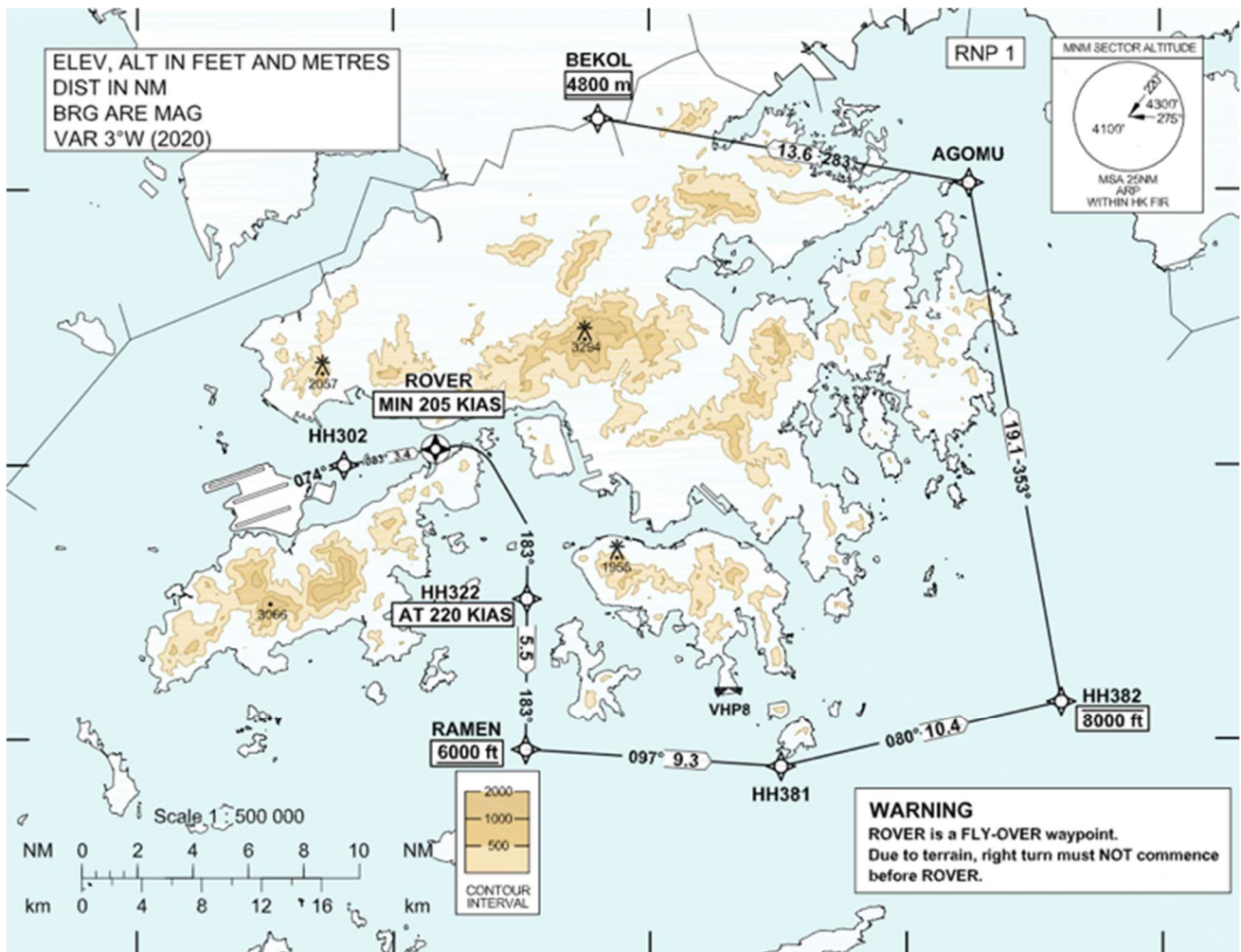


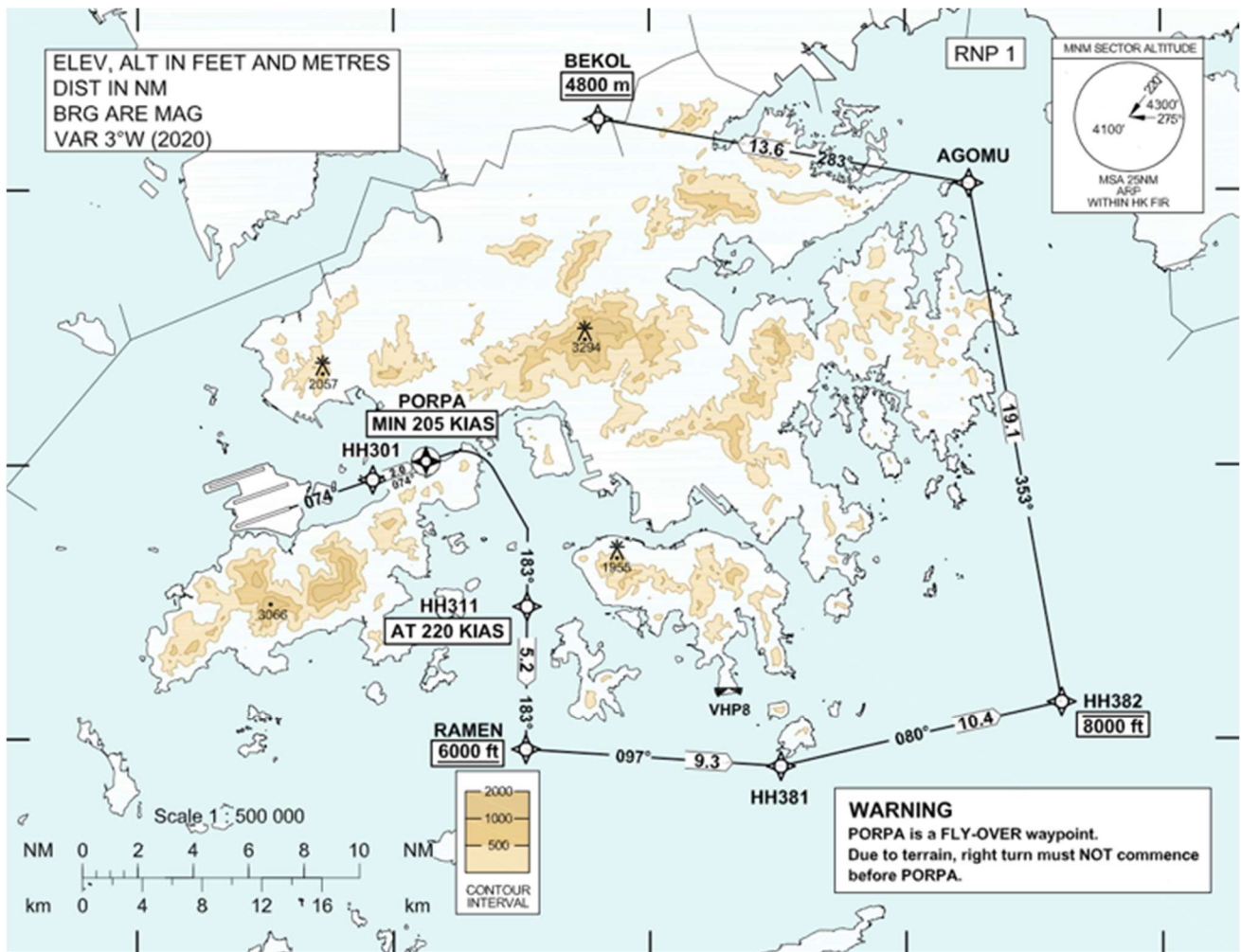
D. Enlarged Plans of Figure 4.2



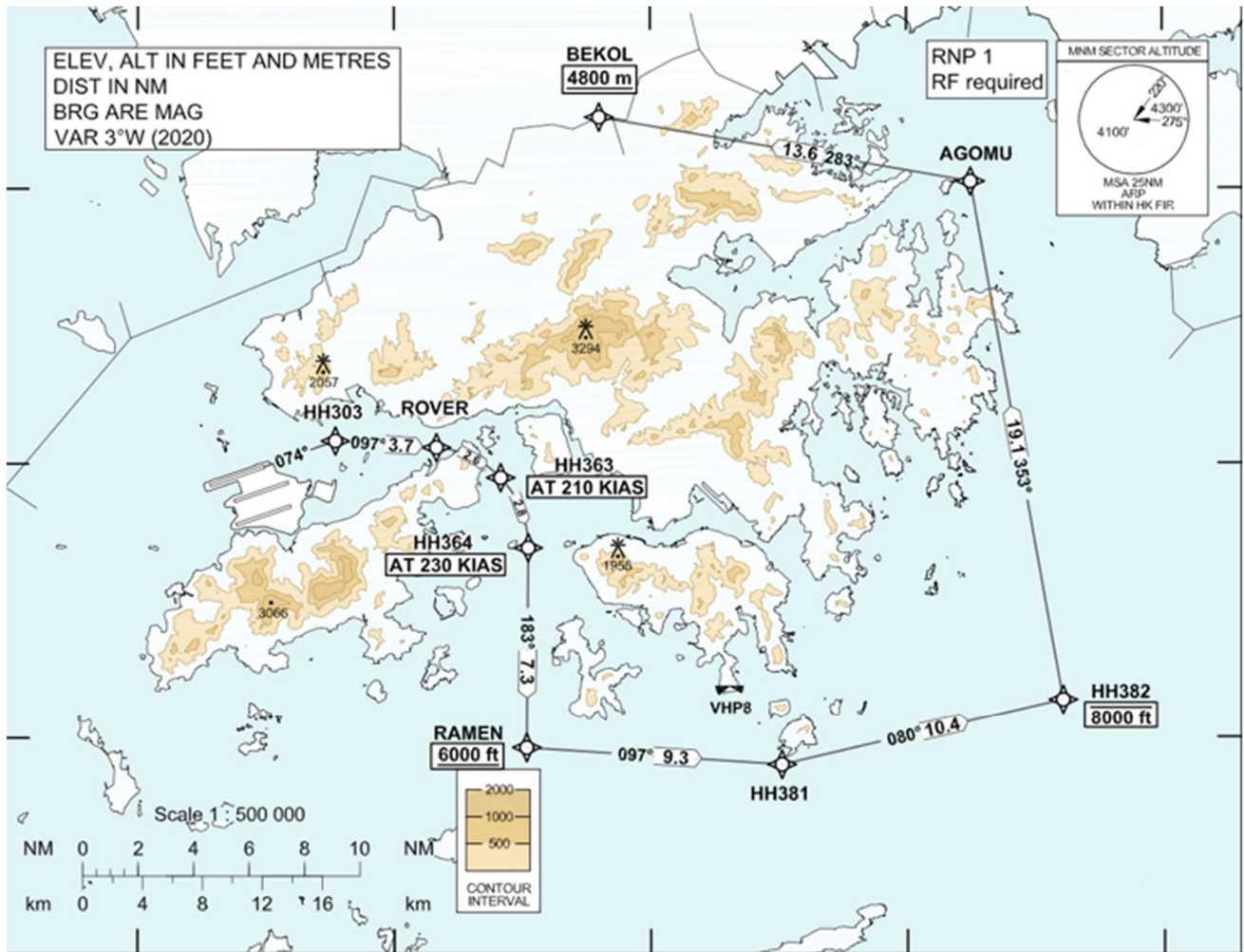
Runway 07L noise mitigating northbound departure path
via West Lamma Channel for 3RS



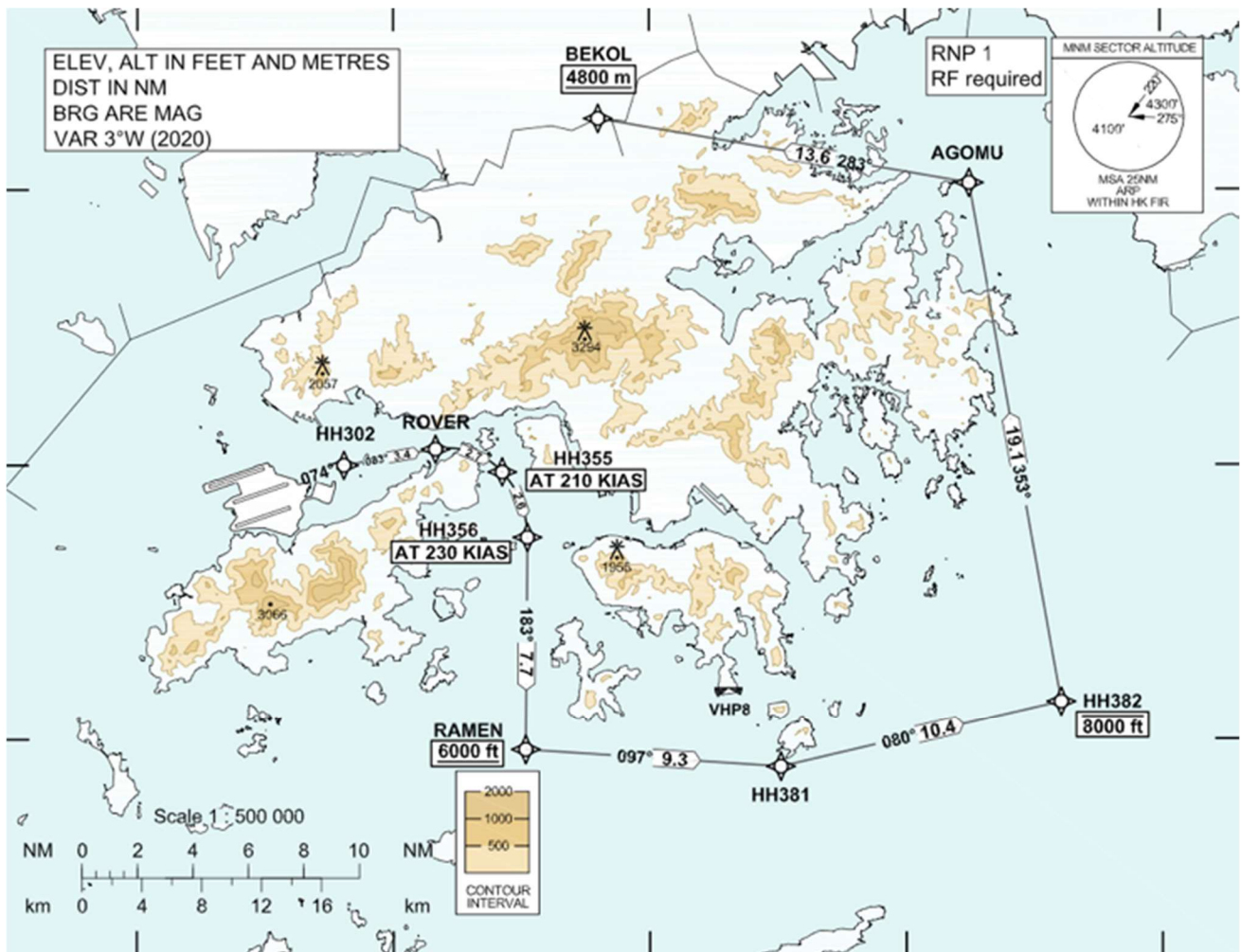
Runway 07C noise mitigating northbound departure path
via West Lamma Channel for 3RS



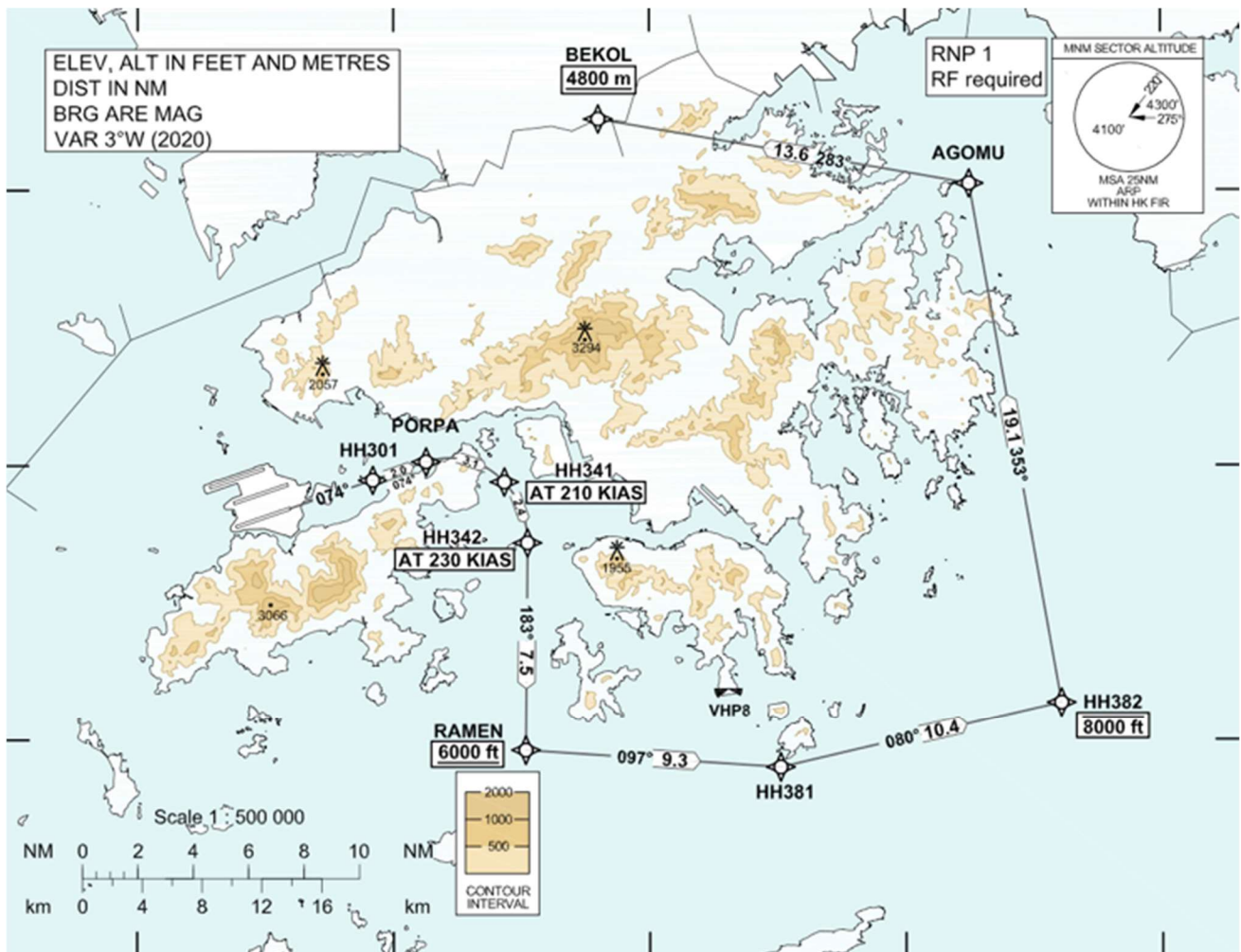
Runway 07R noise mitigating northbound departure path via West Lamma Channel for 3RS (For contingency use only)



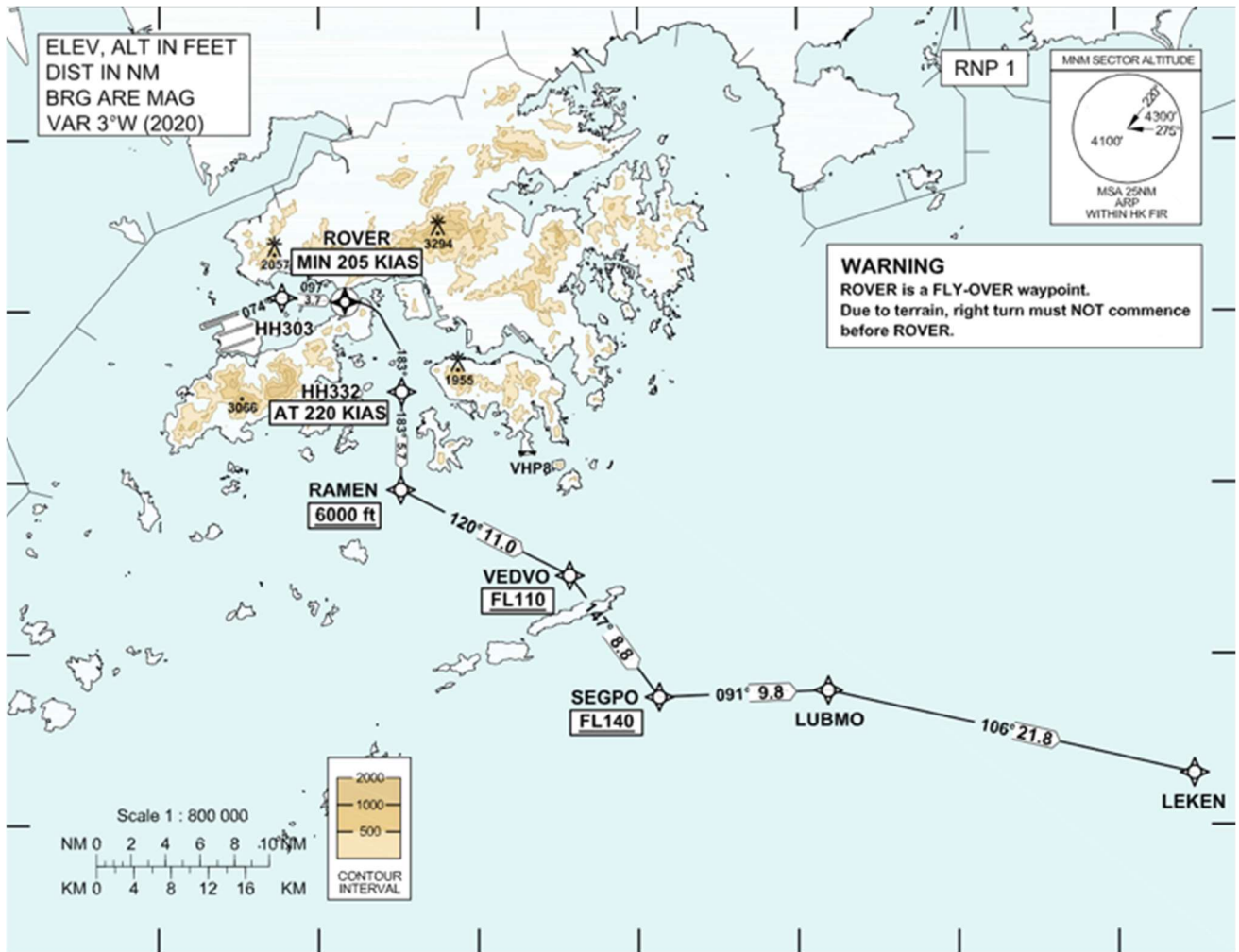
Runway 07L noise mitigating northbound departure path via West Lamma Channel for 3RS for RF-capable aircraft



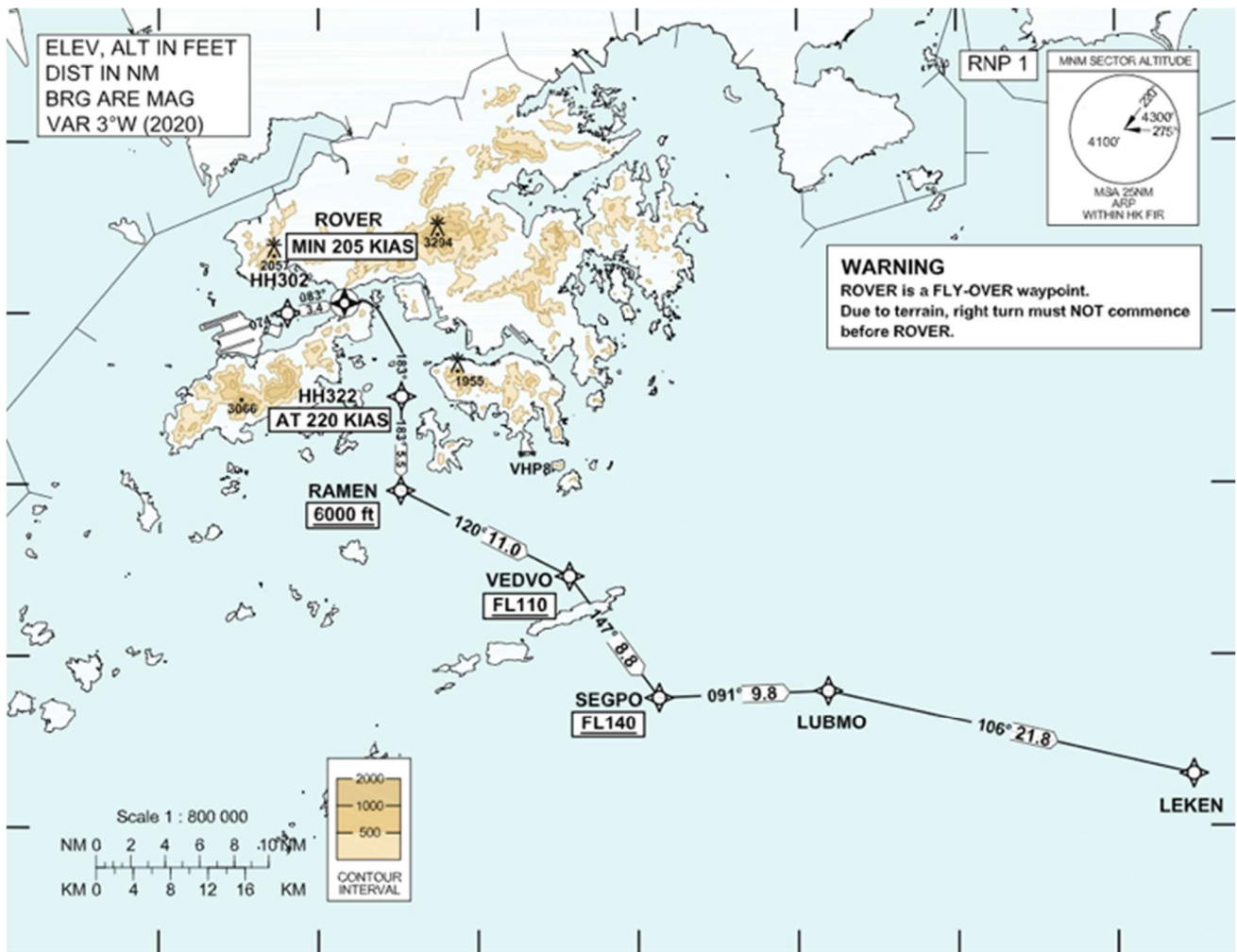
Runway 07C noise mitigating northbound departure path via West Lamma Channel for 3RS for RF-capable aircraft



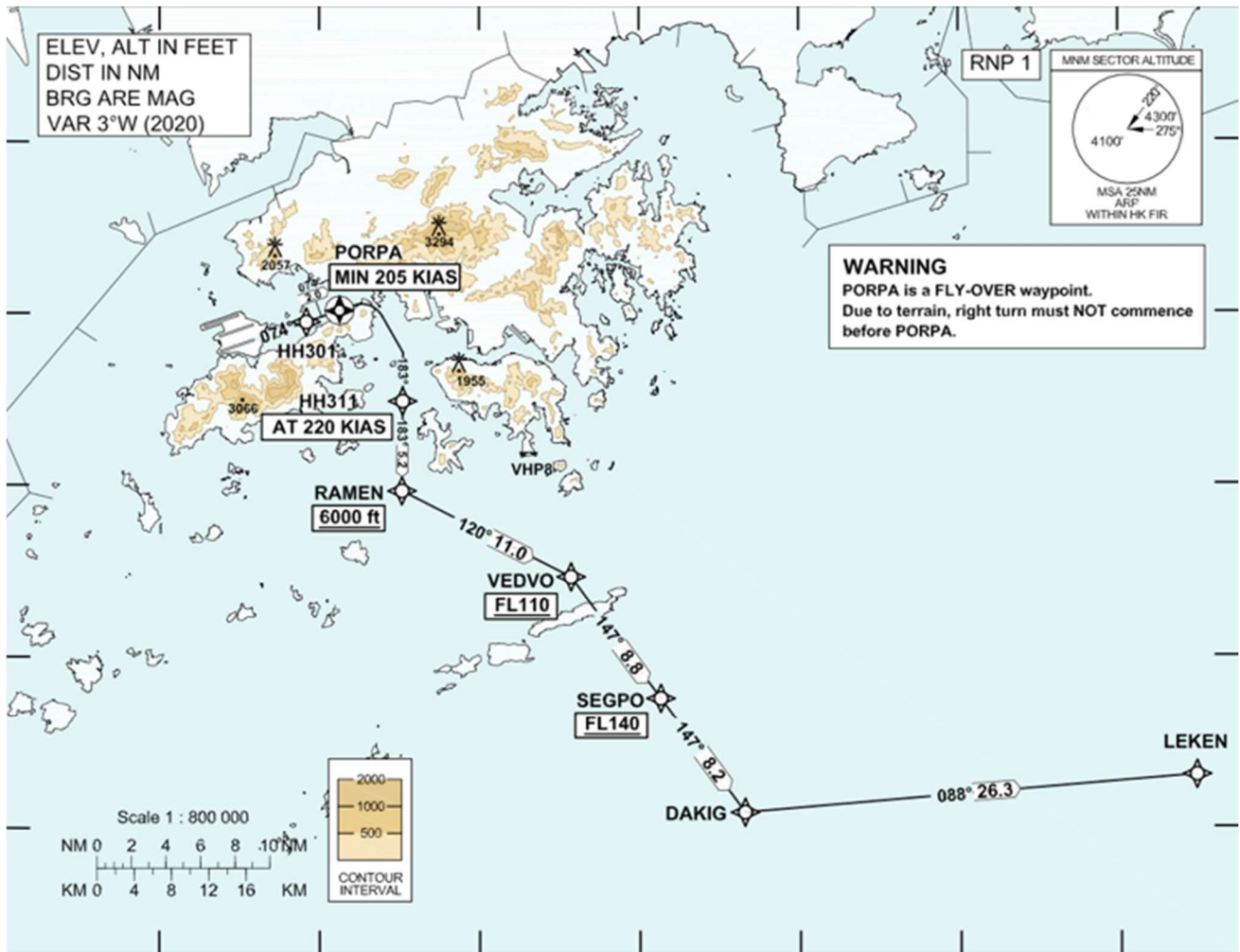
Runway 07R noise mitigating northbound departure path via West Lamma Channel for 3RS for RF-capable aircraft (For contingency use only)



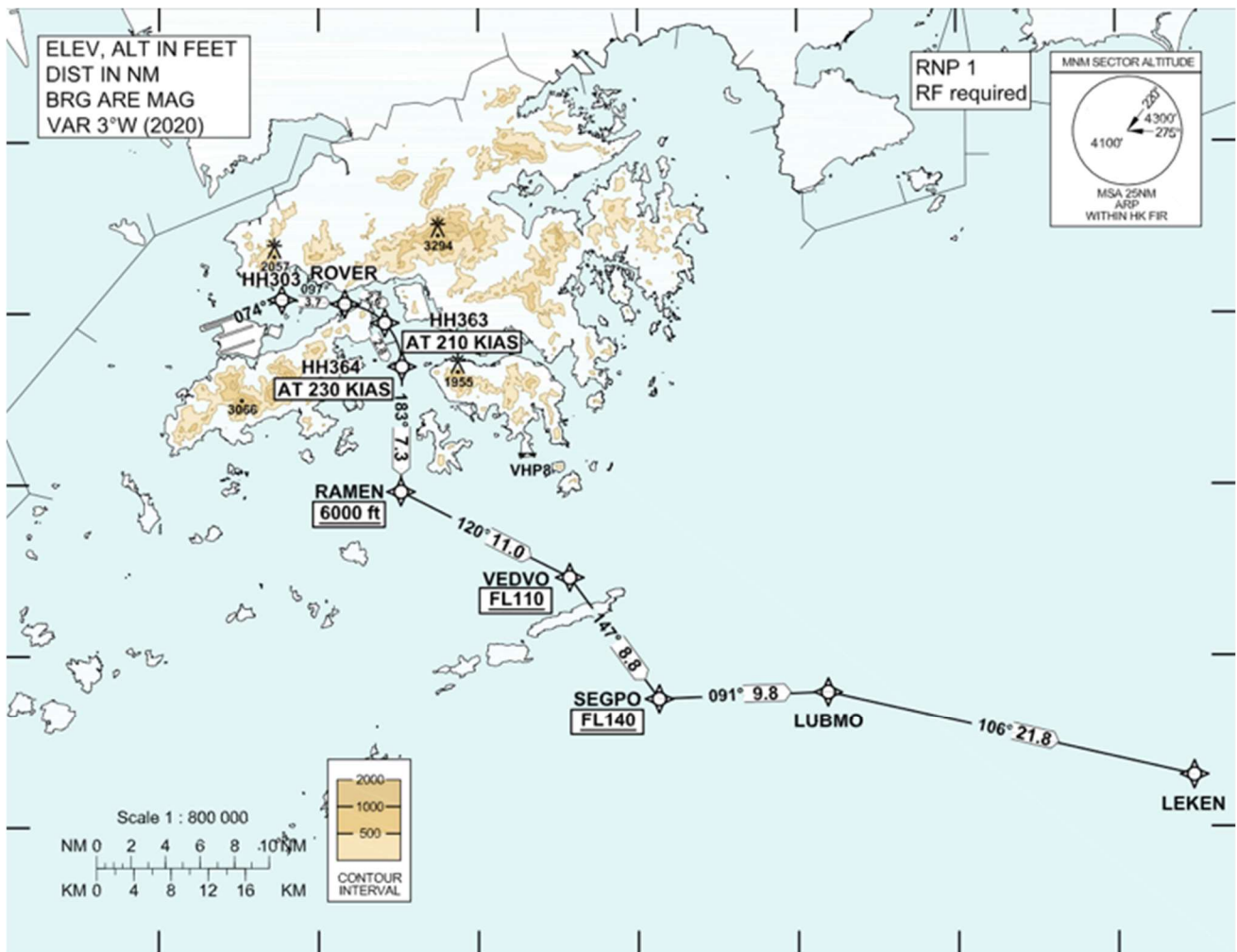
Runway 07L noise mitigating eastbound departure path
via West Lamma Channel for 3RS



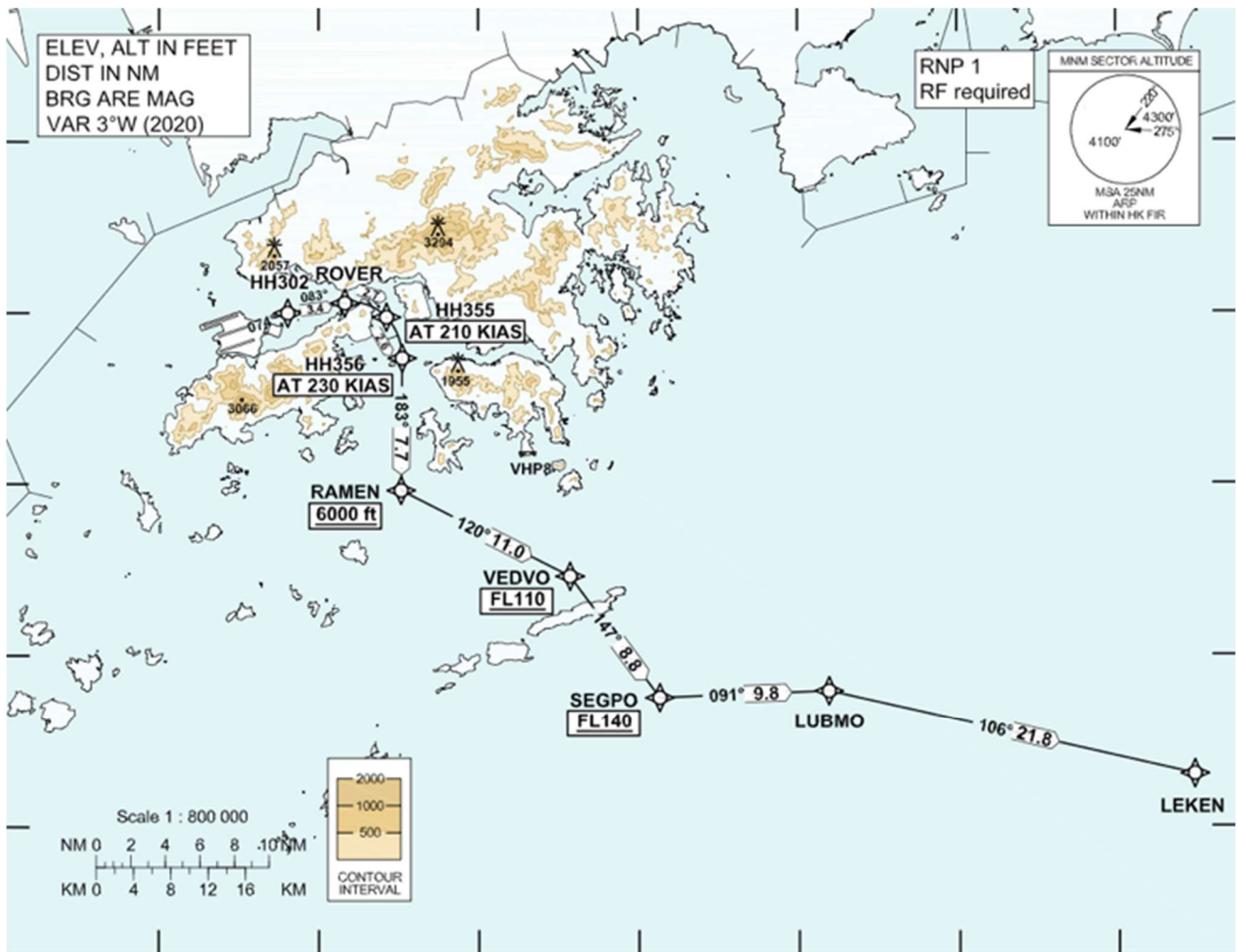
Runway 07C noise mitigating eastbound departure path
via West Lamma Channel for 3RS



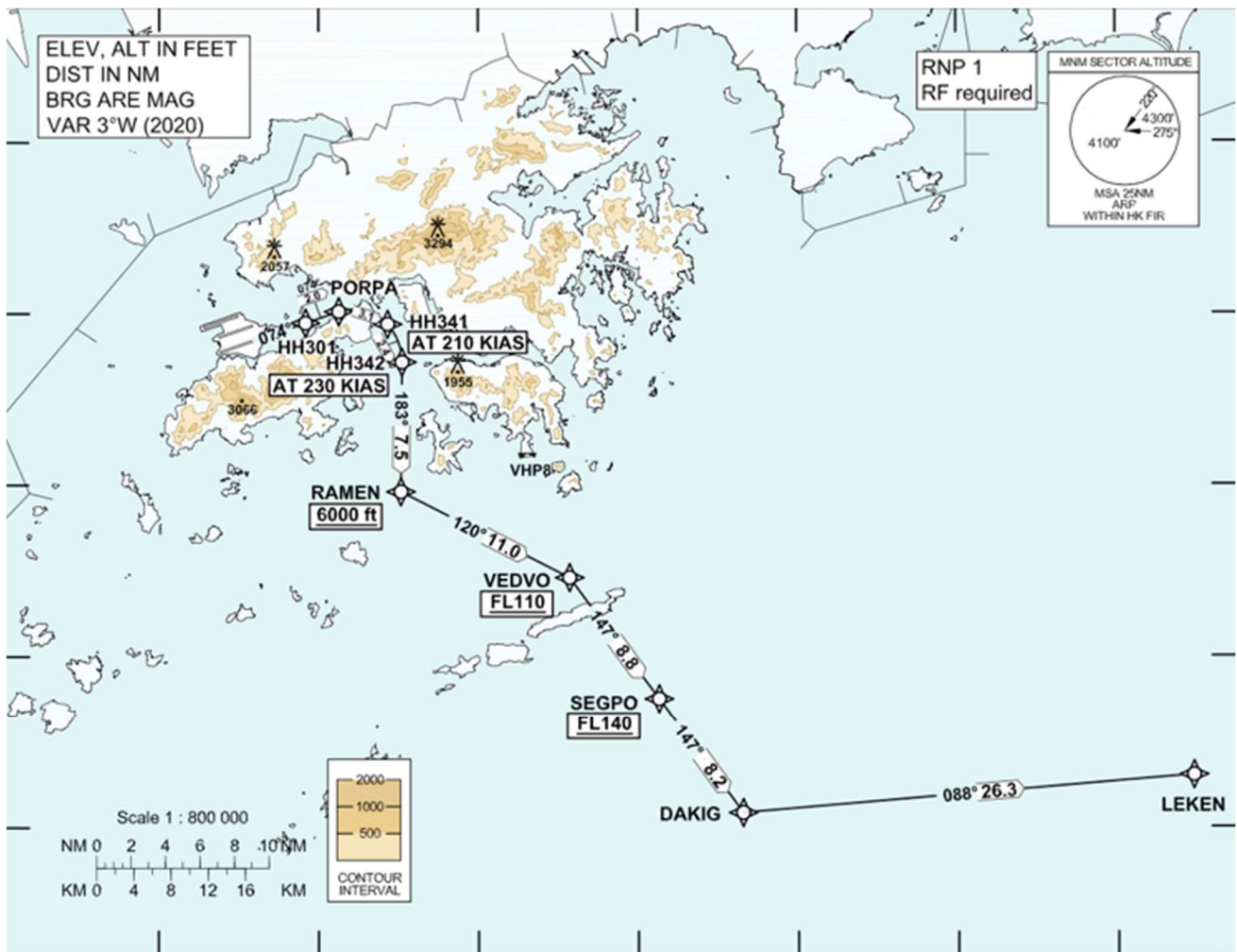
Runway 07R noise mitigating eastbound departure path via West Lamma Channel for 3RS (For contingency use only)



Runway 07L noise mitigating eastbound departure path via West Lamma Channel for 3RS for RF-capable aircraft



Runway 07C noise mitigating eastbound departure path via West Lamma Channel for 3RS for RF-capable aircraft



Runway 07R noise mitigating eastbound departure path
via West Lamma Channel for 3RS for RF-capable aircraft (For contingency use only)

Note: Please refer to the latest publications on the Hong Kong Aeronautical Information Services website (<https://www.ais.gov.hk/>) for operational details and up-to-date information.