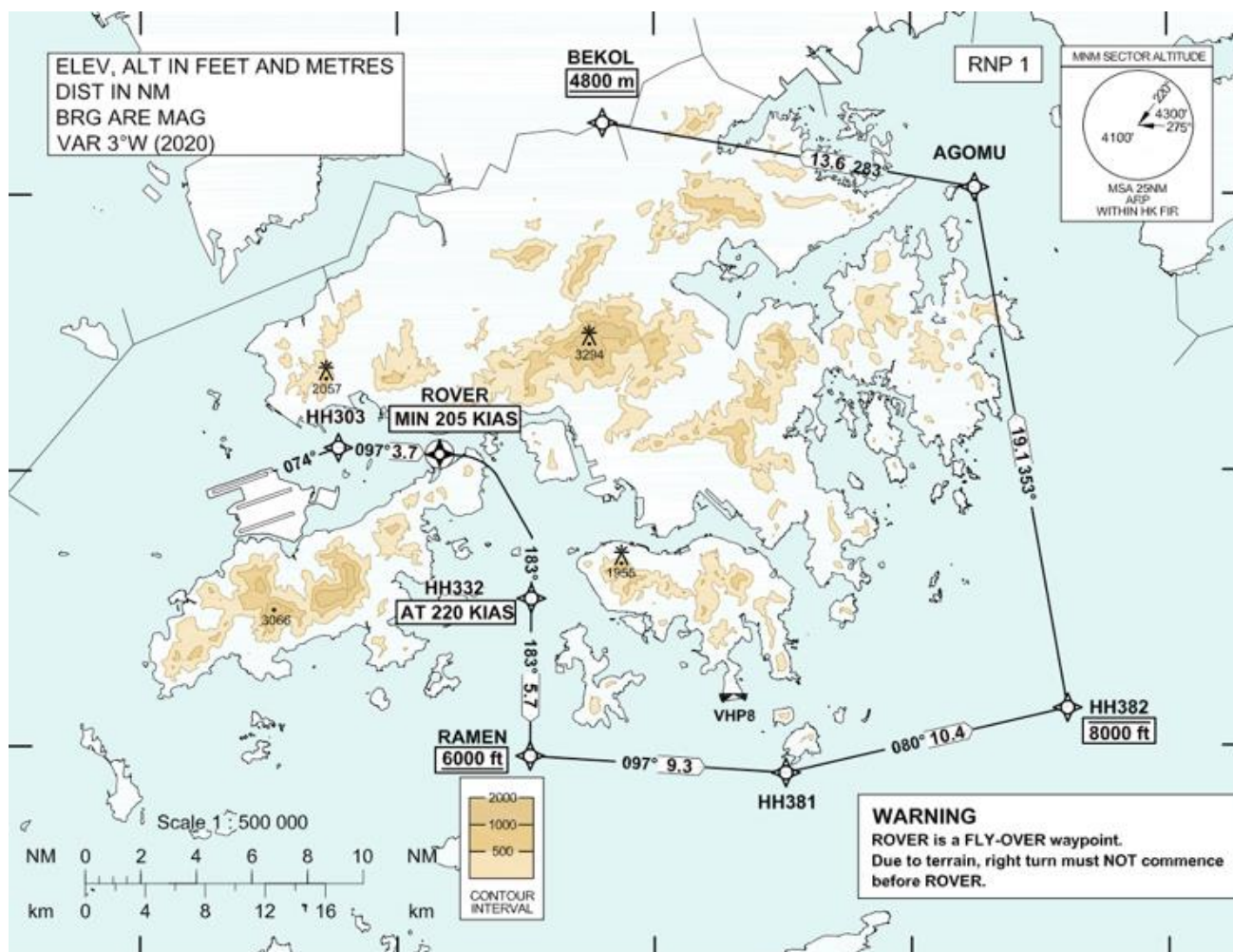
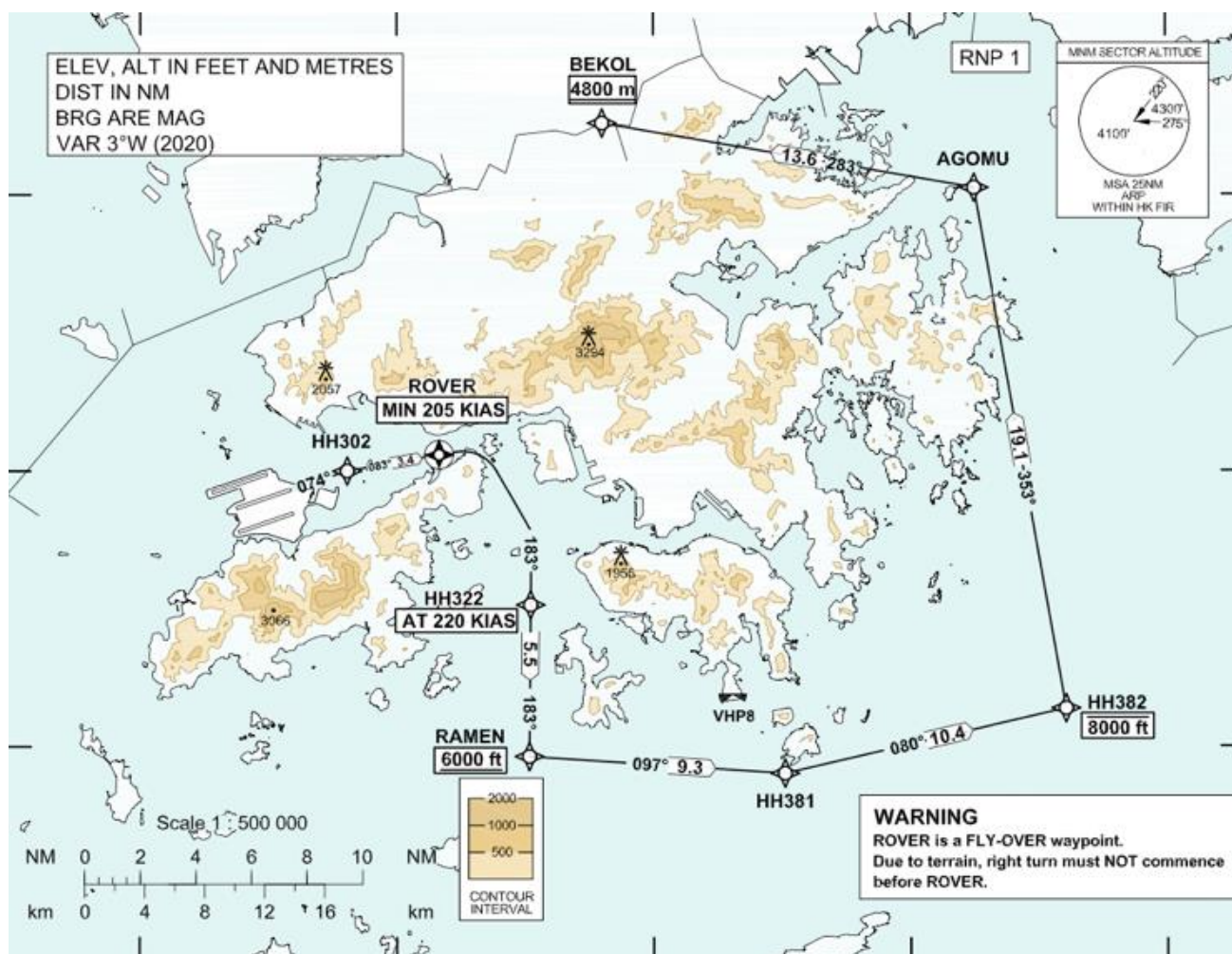


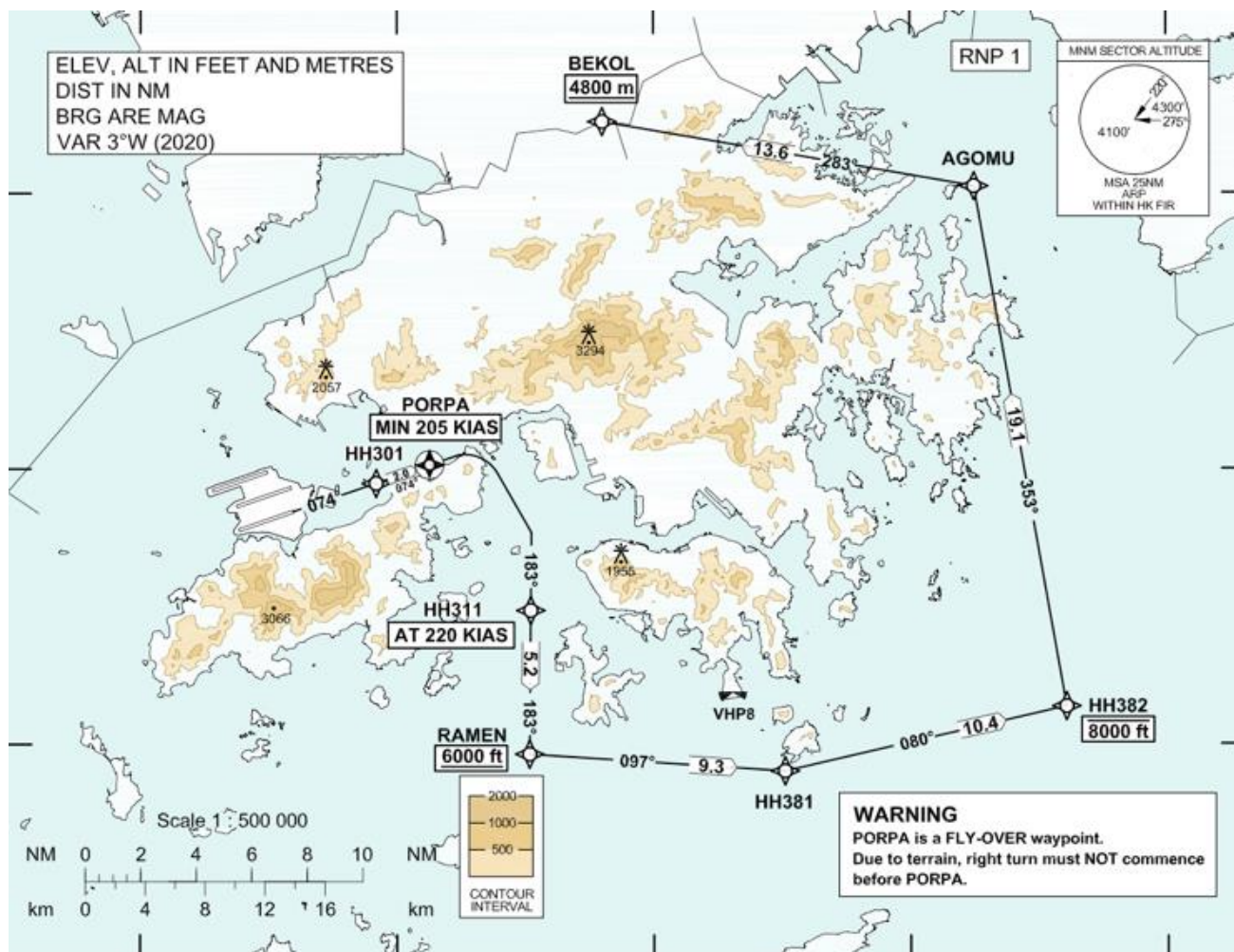
## D. Enlarged Plans of Figure 4.2



Runway 07L noise mitigating northbound departure path  
via West Lamma Channel for 3RS

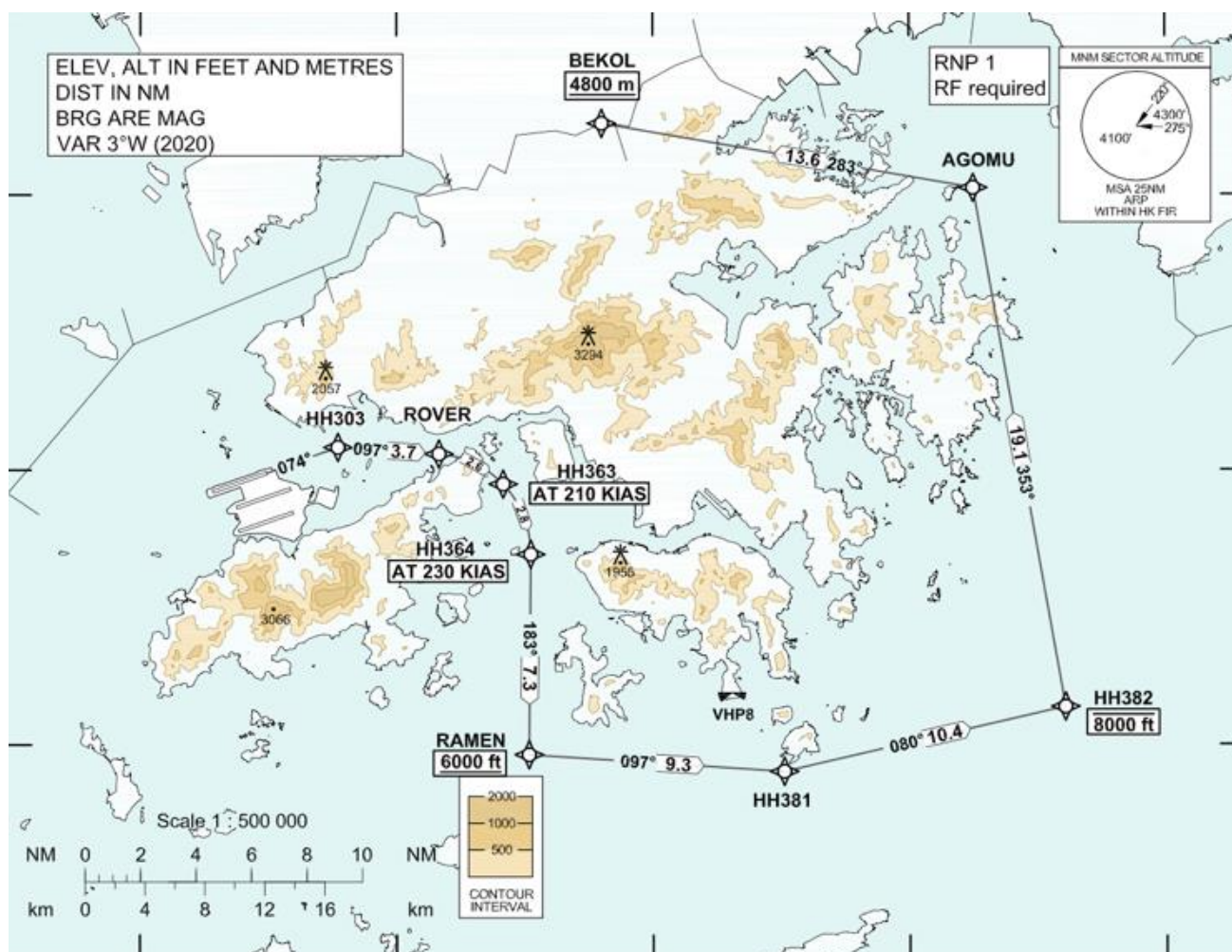


Runway 07C noise mitigating northbound departure path  
via West Lamma Channel for 3RS

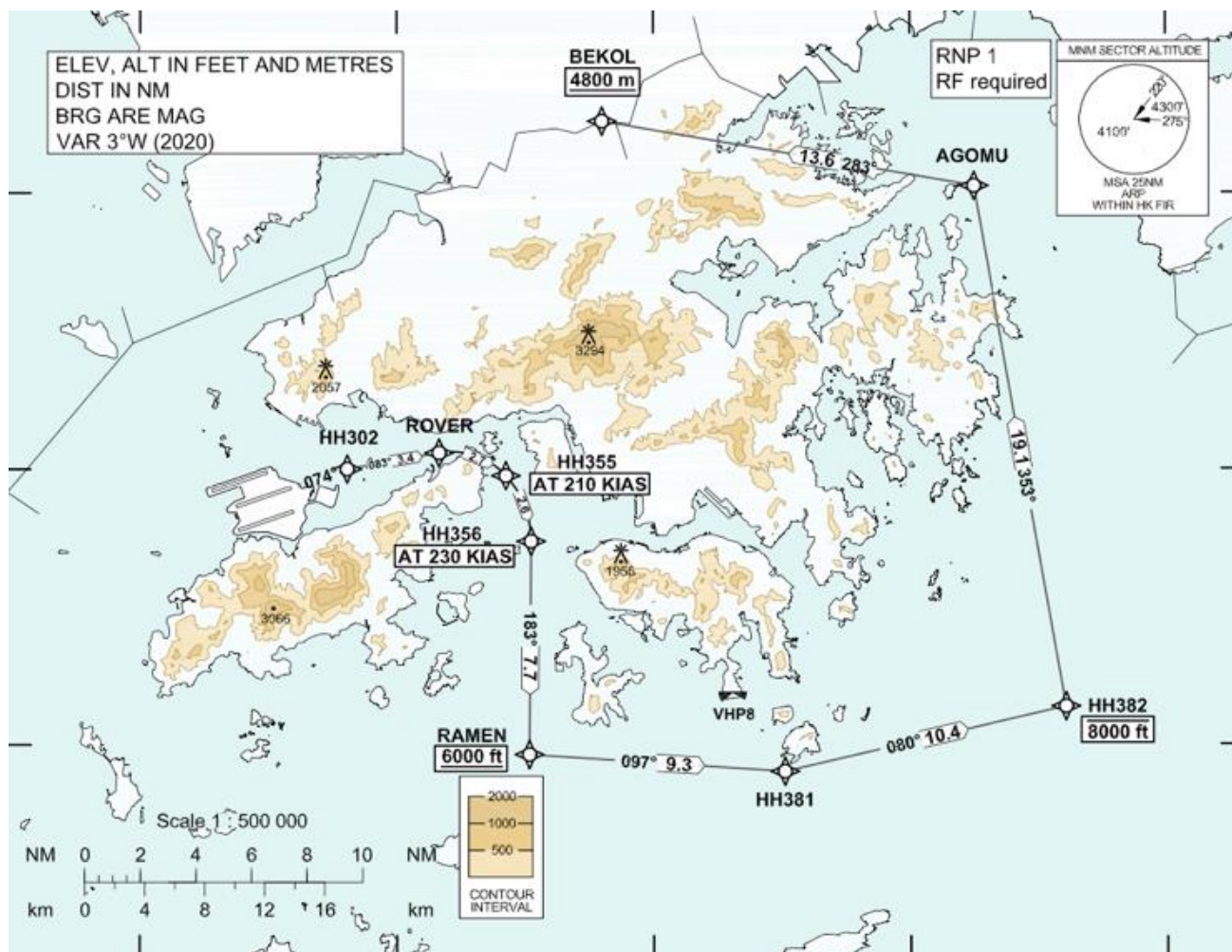


Runway 07R noise mitigating northbound departure path  
via West Lamma Channel for 3RS

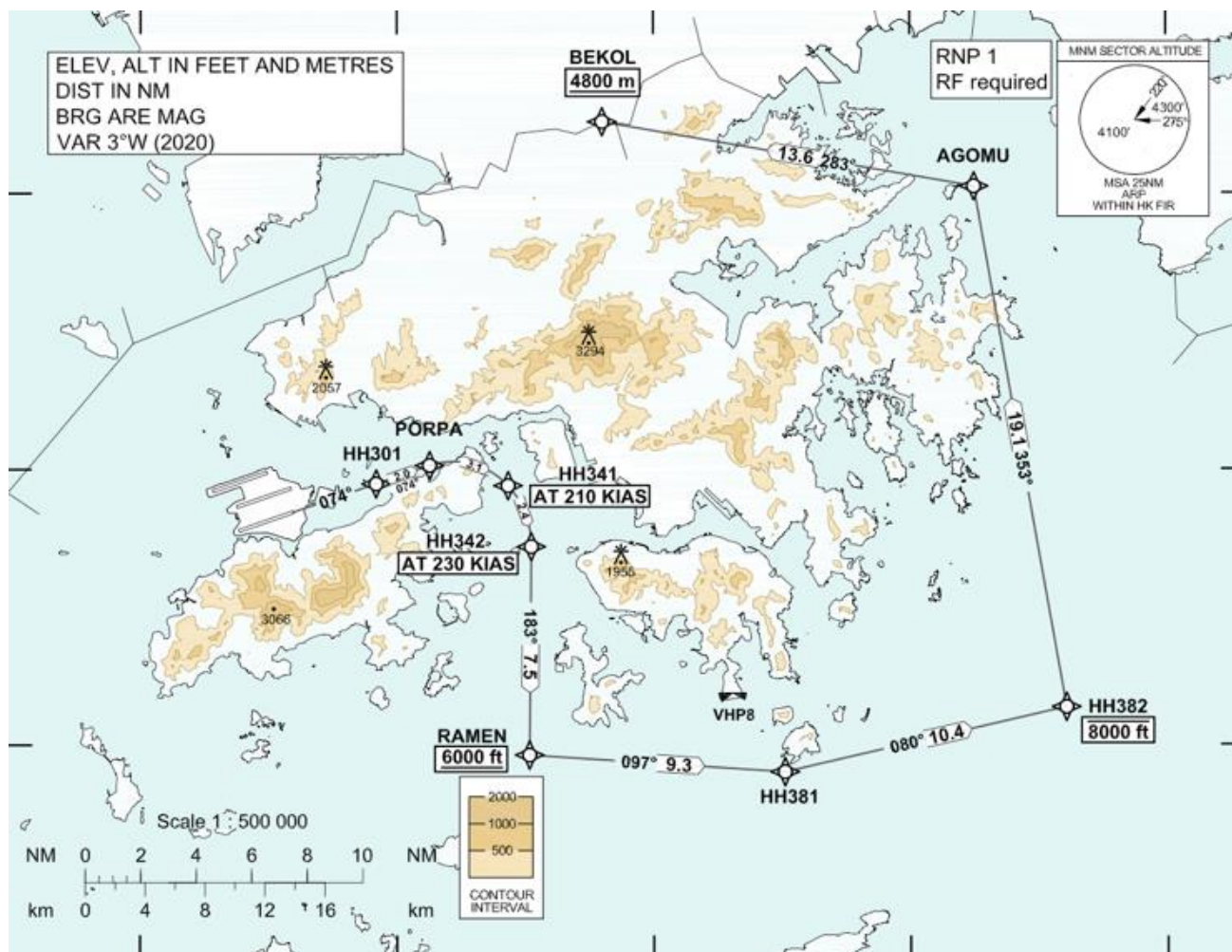




Runway 07L noise mitigating northbound departure path via West Lamma Channel for 3RS for RF-capable aircraft

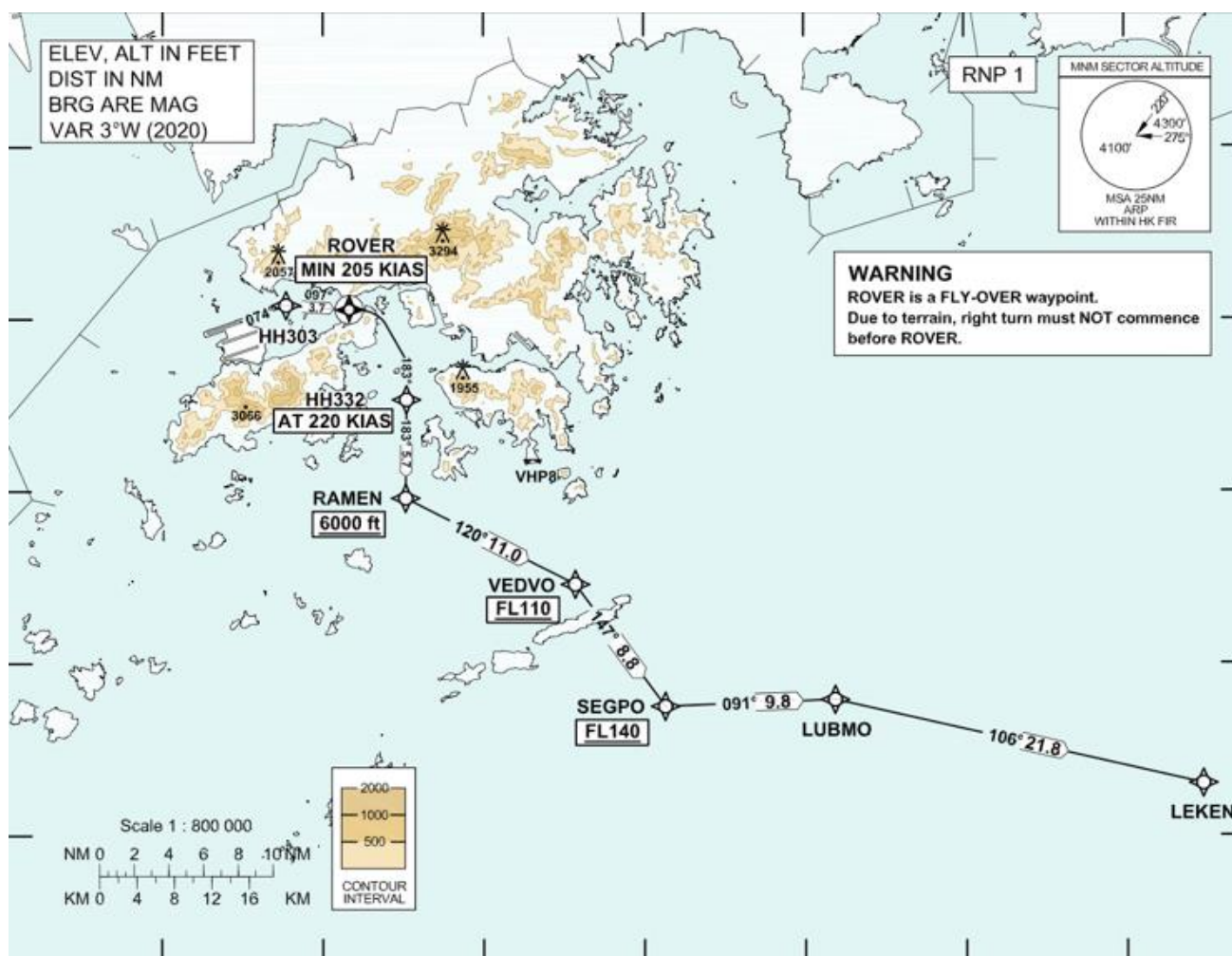


Runway 07C noise mitigating northbound departure path  
via West Lamma Channel for 3RS for RF-capable aircraft

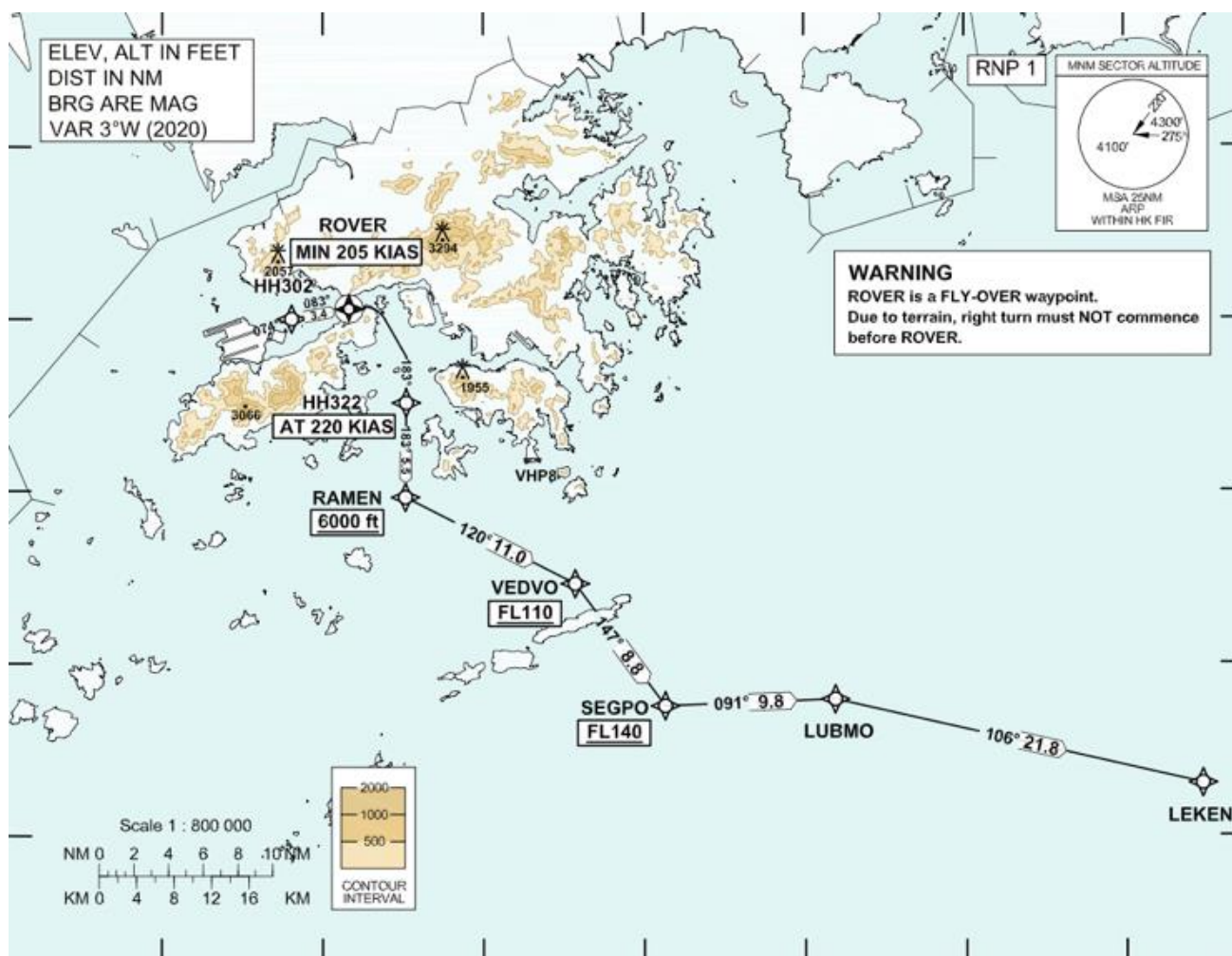


Runway 07R noise mitigating northbound departure path via West Lamma Channel for 3RS for RF-capable aircraft



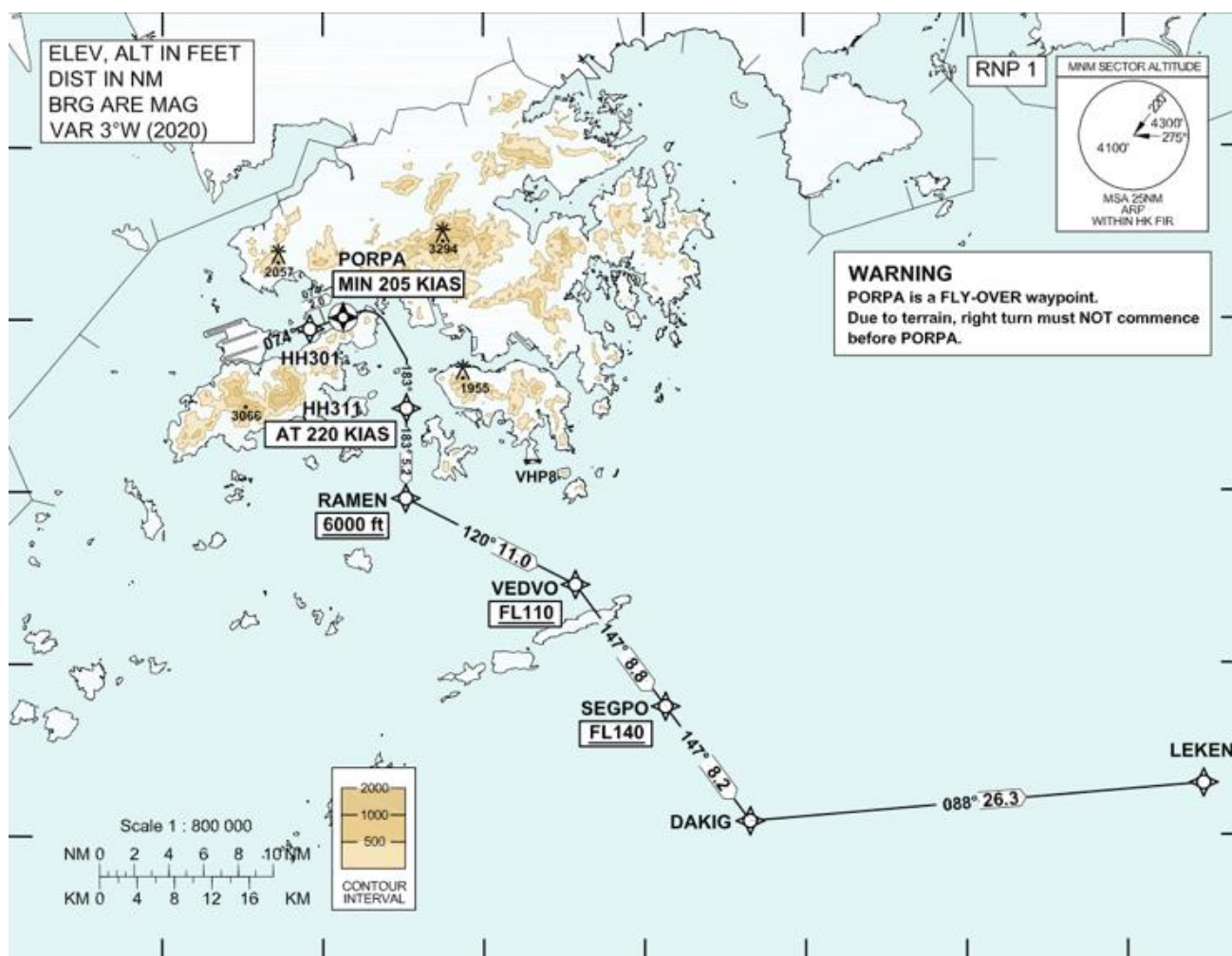


Runway 07L noise mitigating eastbound departure path  
via West Lamma Channel for 3RS

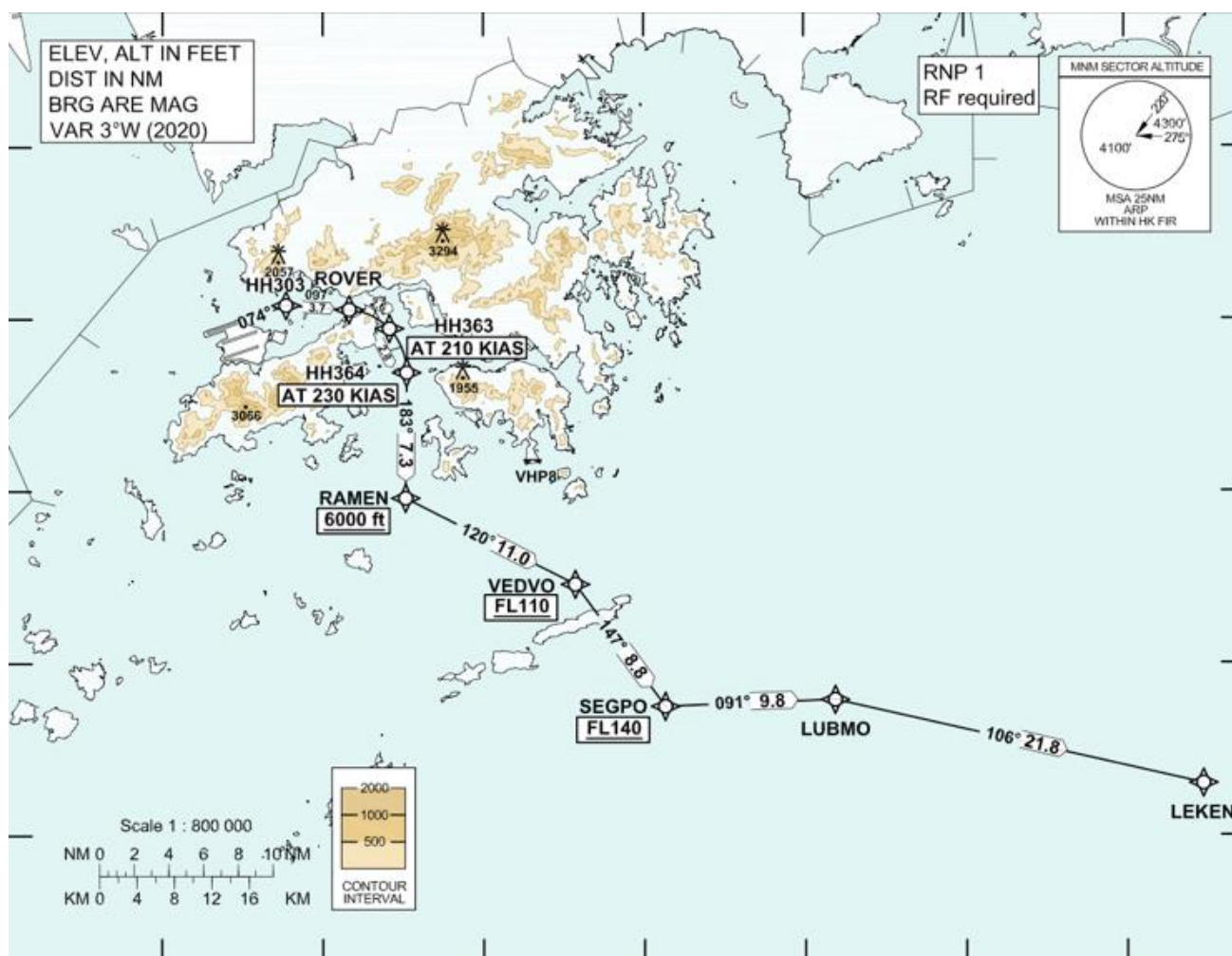


Runway 07C noise mitigating eastbound departure path  
via West Lamma Channel for 3RS

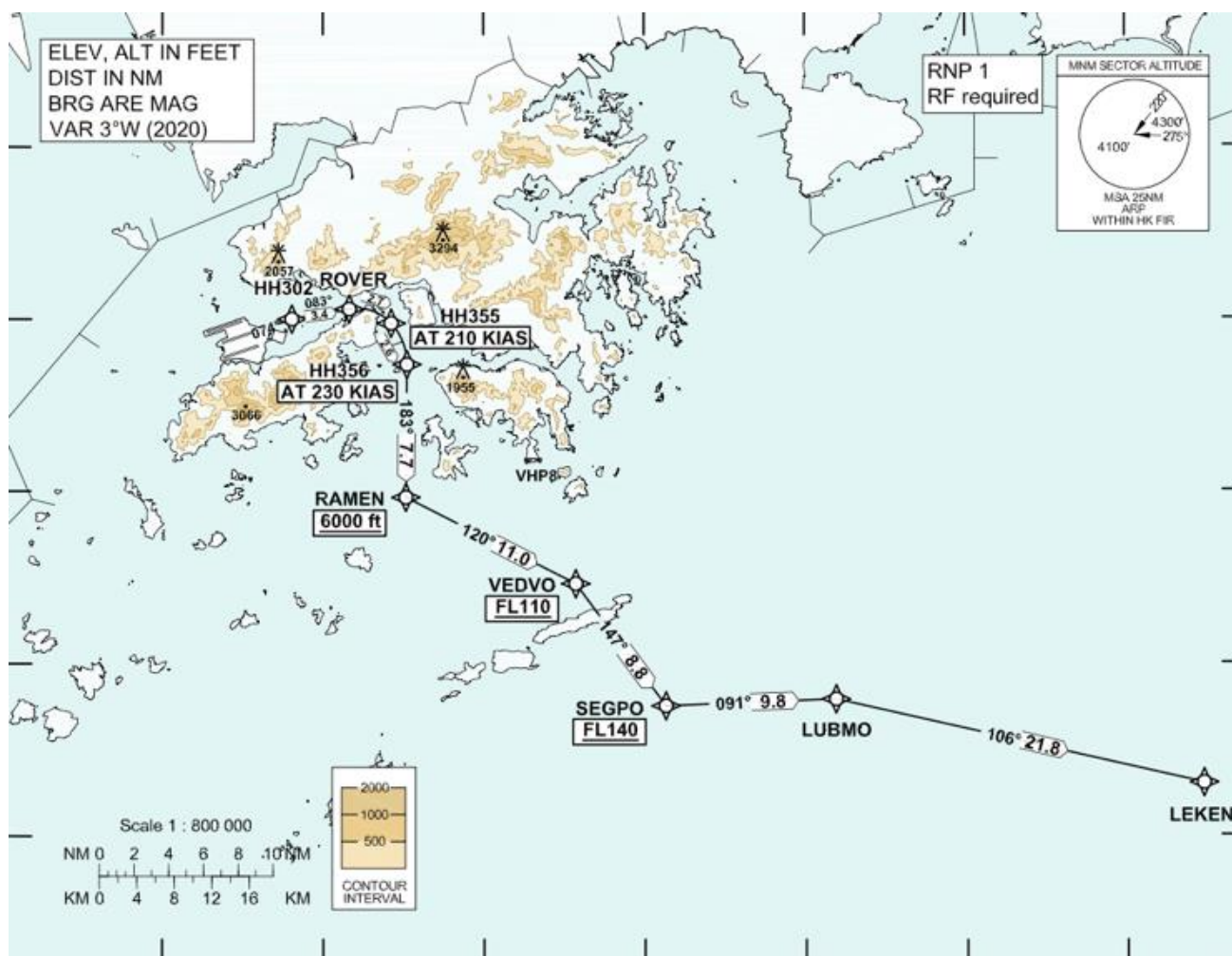




Runway 07R noise mitigating eastbound departure path  
via West Lamma Channel for 3RS

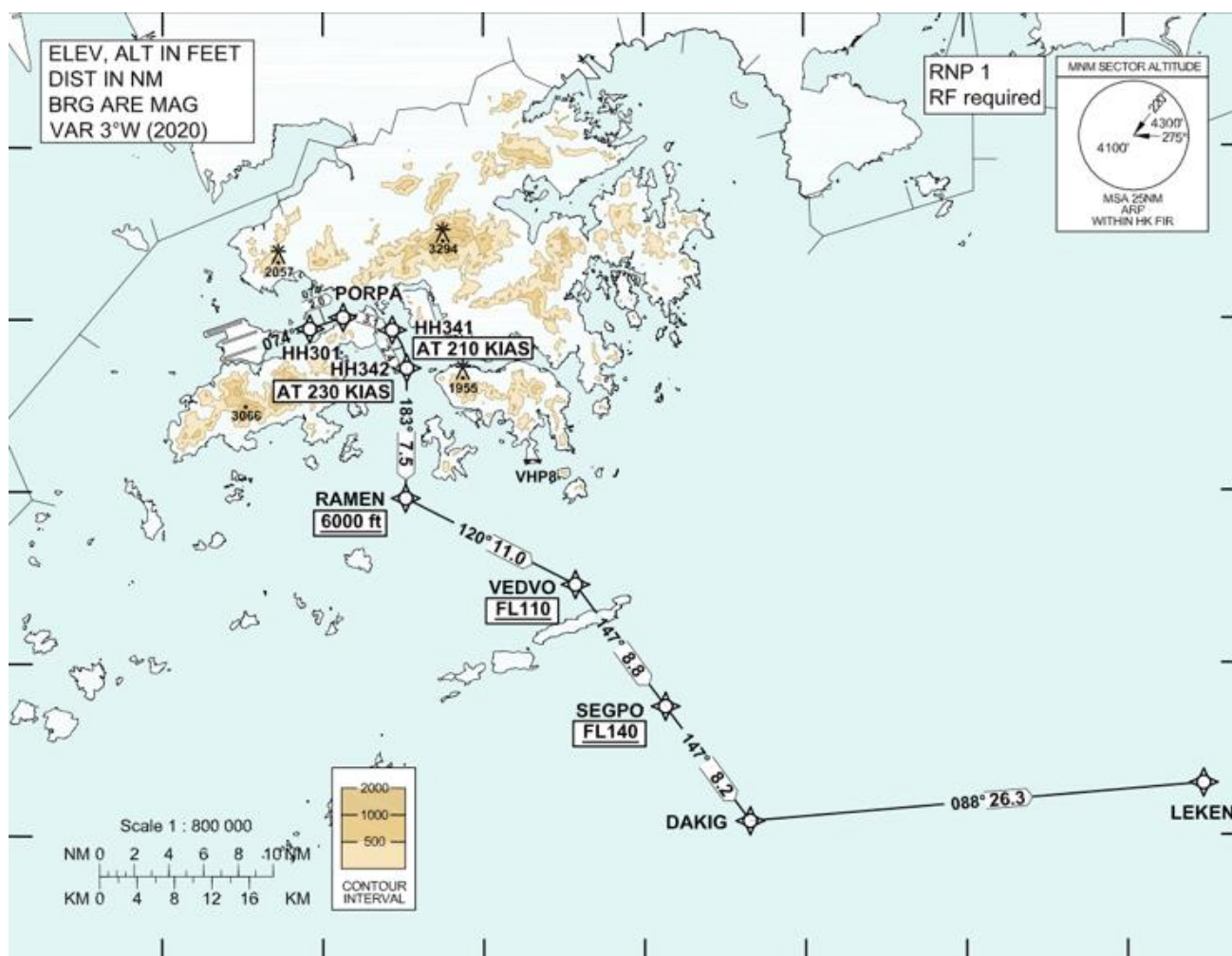


Runway 07L noise mitigating eastbound departure path  
via West Lamma Channel for 3RS for RF-capable aircraft



Runway 07C noise mitigating eastbound departure path  
via West Lamma Channel for 3RS for RF-capable aircraft





Runway 07R noise mitigating eastbound departure path  
via West Lamma Channel for 3RS for RF-capable aircraft

Note: Please refer to the latest publications on the Hong Kong Aeronautical Information Services website (<https://www.ais.gov.hk/>) for operational details and up-to-date information.