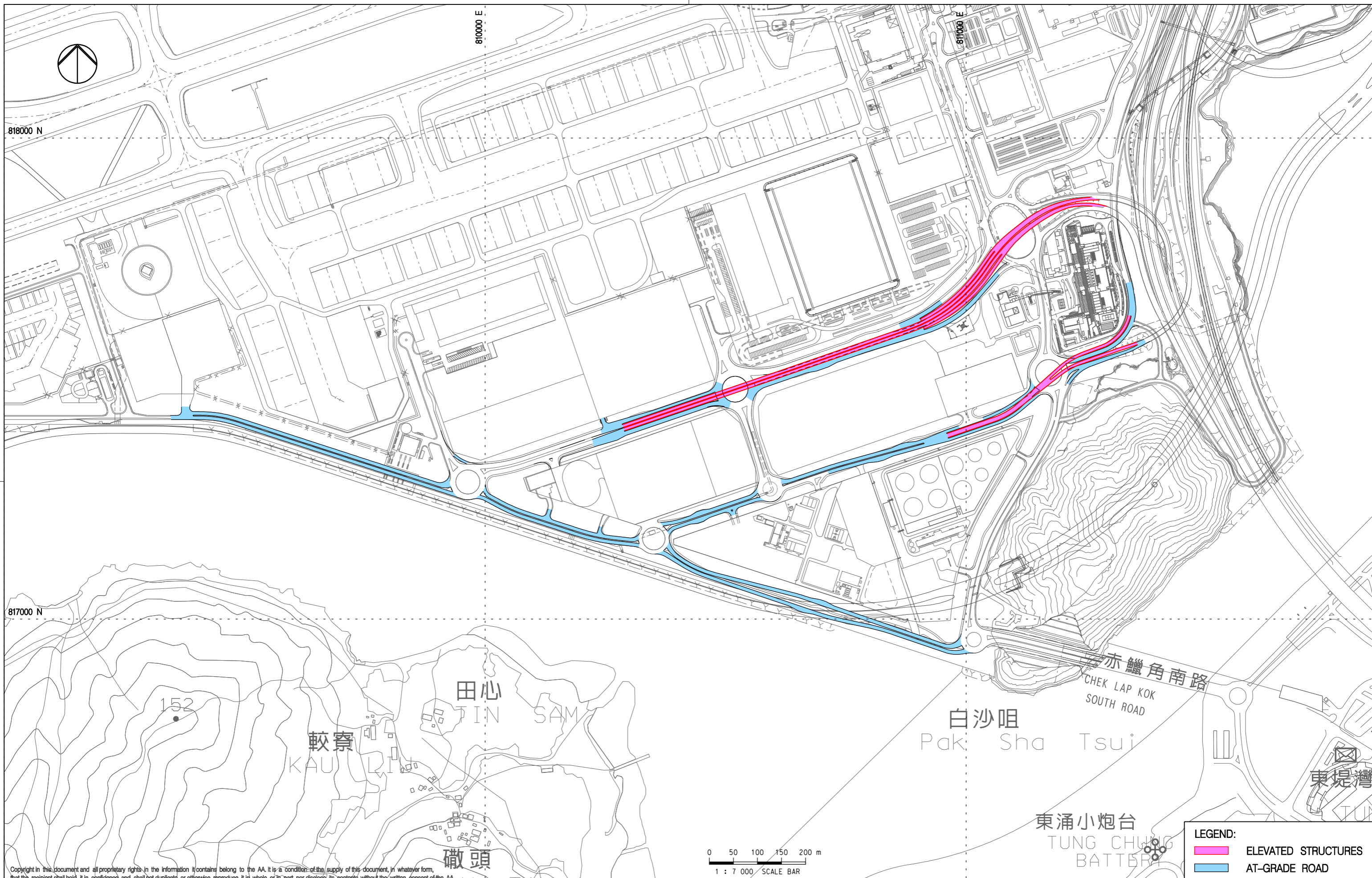


LOCATION PLAN – TERMINAL 2 ROAD NETWORK

Figure 4



Copyright in this document and all proprietary rights in the information it contains belong to the AA. It is a condition of the supply of this document, in whatever form, that the recipient shall hold it in confidence and shall not duplicate or otherwise reproduce it in whole or in part, nor disclose its contents without the written consent of the AA.

Rev.	Date	Description	Checked
A	31AUG15	FIRST ISSUE	DC
B	22OCT15	GENERAL REVISION	DC



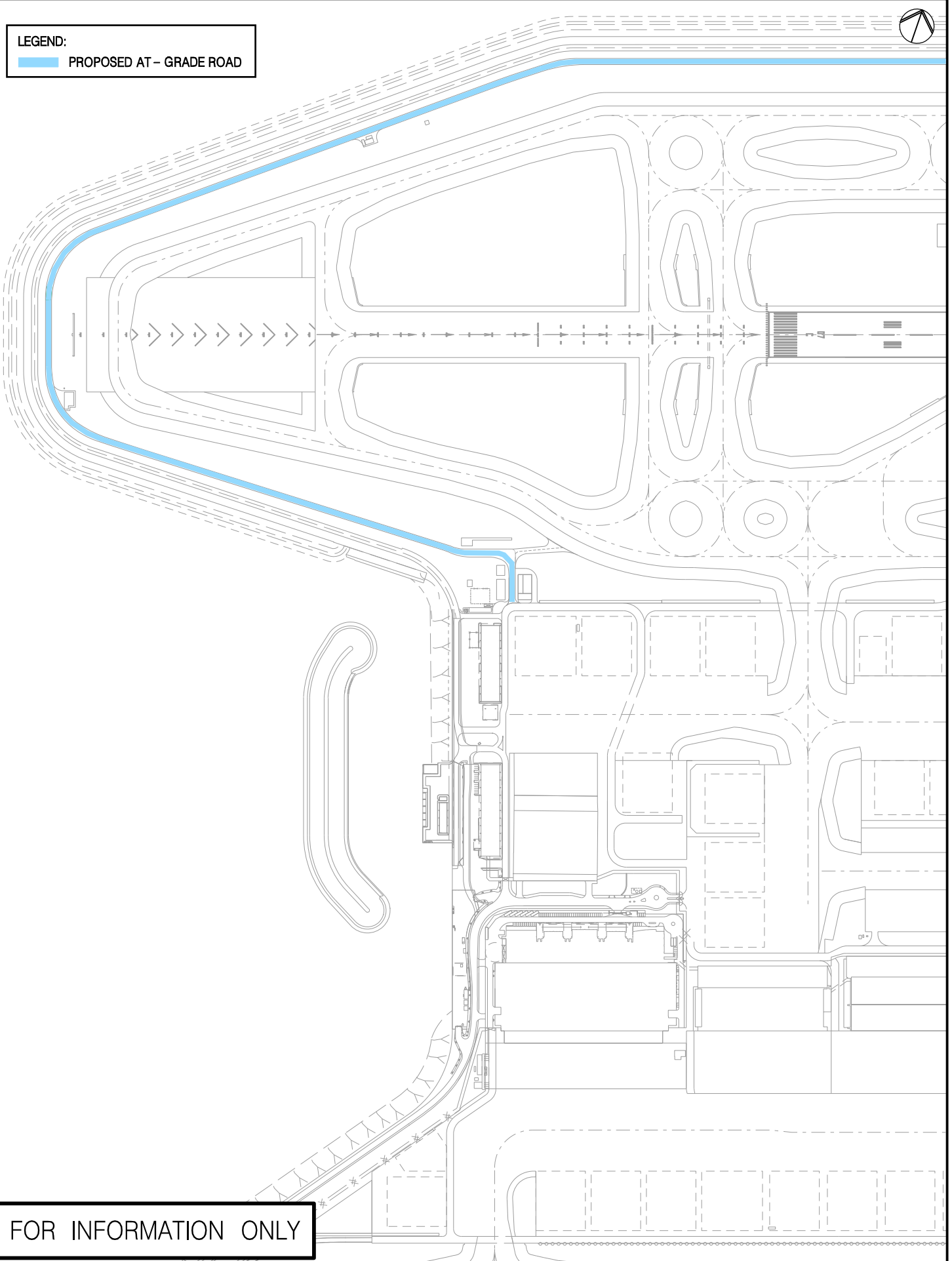
Title
**LOCATION PLAN -
 SOUTH CARGO ROAD IMPROVEMENT WORKS**

Consultant's Signatures for Approval		Date
Design	DC	22OCT15
Checkers	DC	22OCT15
Approver	EC	22OCT15

EXPANSION OF HONG KONG INTERNATIONAL AIRPORT INTO A THREE-RUNWAY SYSTEM	
Drawing No.	Figure 5
Scale at A3	1 : 7000
Rev.	B



LEGEND:
 PROPOSED AT - GRADE ROAD



FOR INFORMATION ONLY



Title		Design	Date
Location Plan - Proposed At-grade Road		-	-
		Checked	-
		Approved	-

Hong Kong International Airport	
Drawing No.	Figure 6
Scale	1 : 6500 (A4)
Rev.	A

Plot file : PD_halfstone_A3_A4.pdf_Luphoig